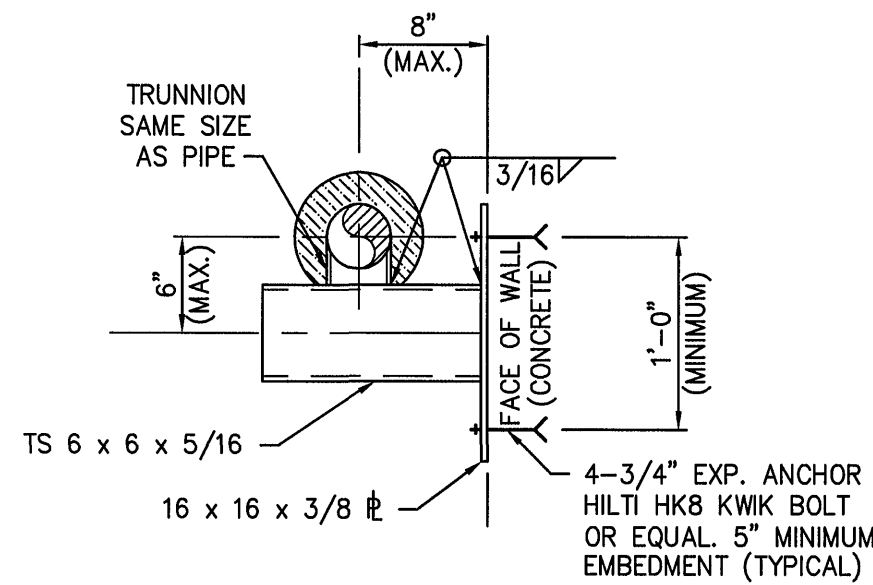
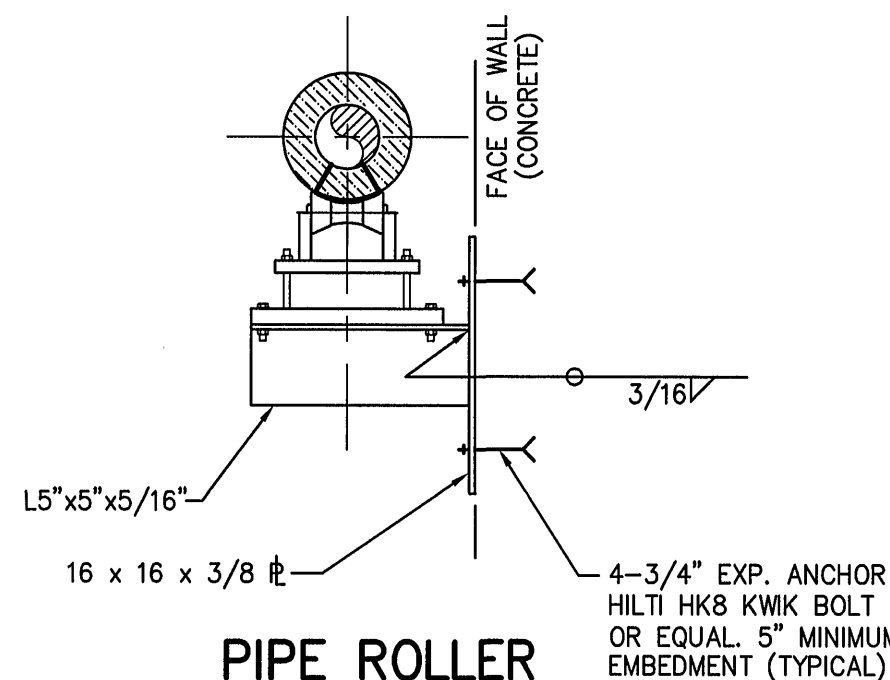


**PIPE GUIDE
WALL MOUNTED
DETAIL "A"**
NO SCALE

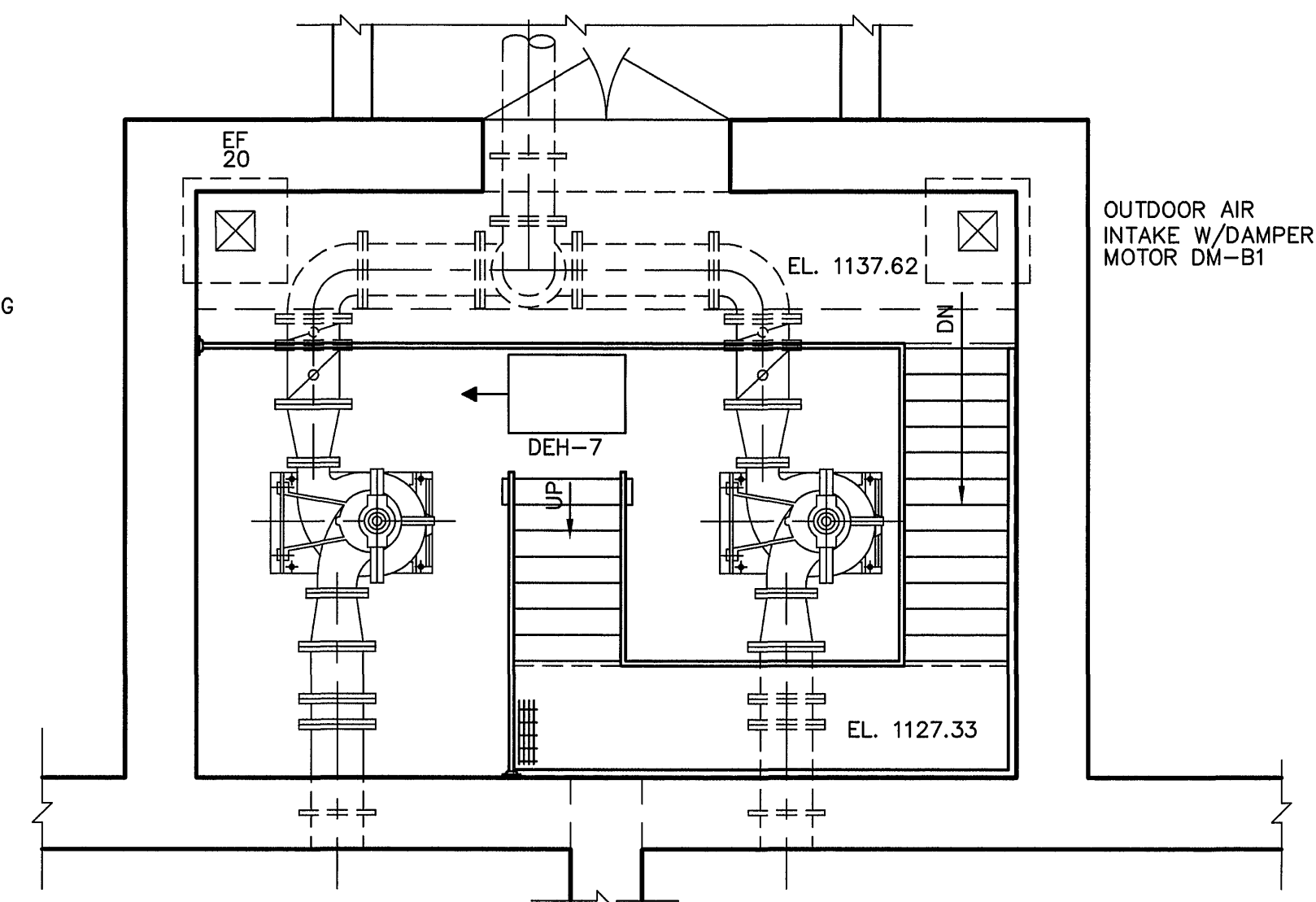


**PIPE ANCHOR
WALL MOUNTED
DETAIL "B"**
NO SCALE

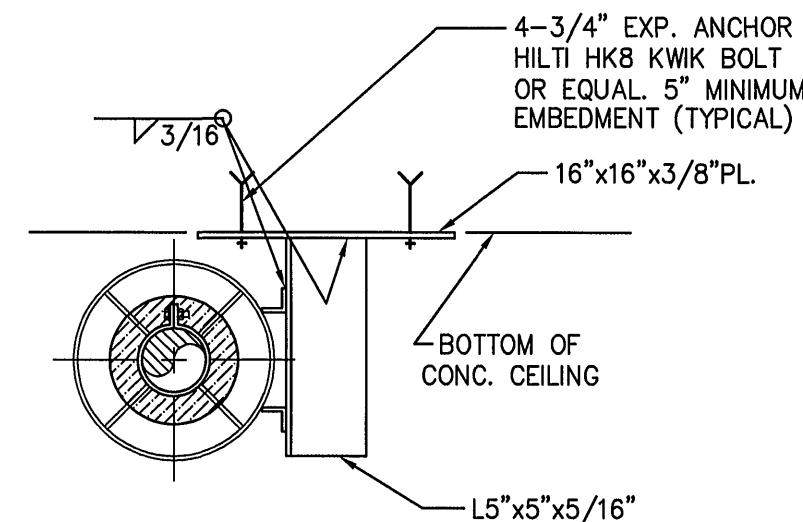


**PIPE ROLLER
WALL MOUNTED
DETAIL "C"**
NO SCALE

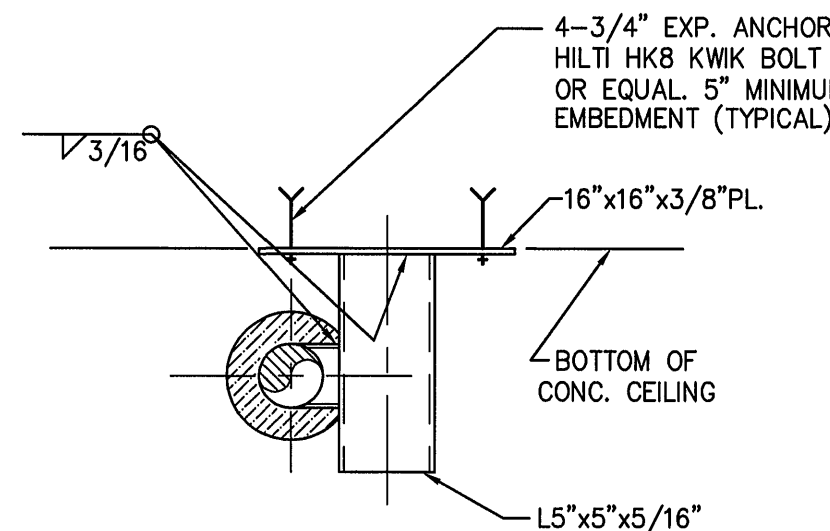
DEHUMIDIFIER DEH-7
PORTABLE UNIT, FLEXIBLE CABLE CONNECTION
TO WALL RECEPTACLE. FLEXIBLE PLASTIC TUBING
FOR CONDENSATE REMOVAL ROUTED ON FLOOR
TO SUMP PUMP FLOOR INLET.



WASHWATER PUMP STATION PLAN @ EL. 1138.00
SCALE: 1/4" = 1'-0"

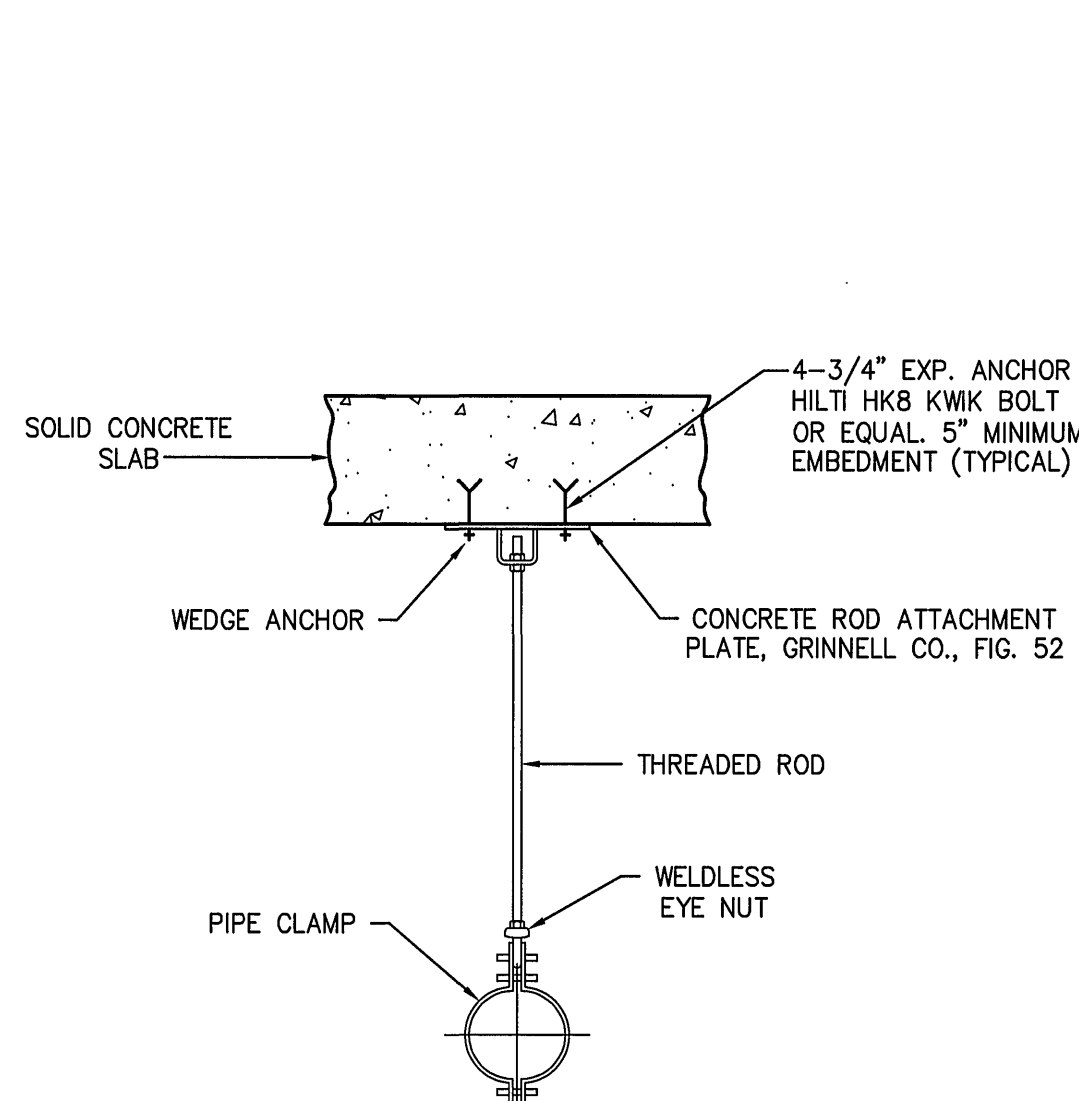


**PIPE GUIDE
CEILING MOUNTED
DETAIL "D"**
NO SCALE



**PIPE ANCHOR
CEILING MOUNTED
DETAIL "E"**
NO SCALE

NOTE:
FOR ITEMS DETAIL "A" THRU "F", ALL STRUCTURAL AND VENDOR SUPPLIED
COMPONENTS TO BE HOT DIP GALVANIZED AFTER FABRICATION.



**TYPICAL PIPE HANGER
DETAIL "F"**
NO SCALE

WASHWATER PUMP STATION ON SITE BUILDING-HVAC SCHEMATIC FUNCTIONAL DESCRIPTION OF OPERATION

SUMMER VENTILATION SEQUENCE

AUTOMATIC OPERATION
ROOF EXHAUST FAN EF-23 IS ENERGIZED BY WALL
THERMOSTAT ADJUSTABLE SETTING OF 85° F THAT
ALSO OPENS OUTDOOR MAKEUP AIR DAMPER DM-B5
THROUGH INTERLOCKING.

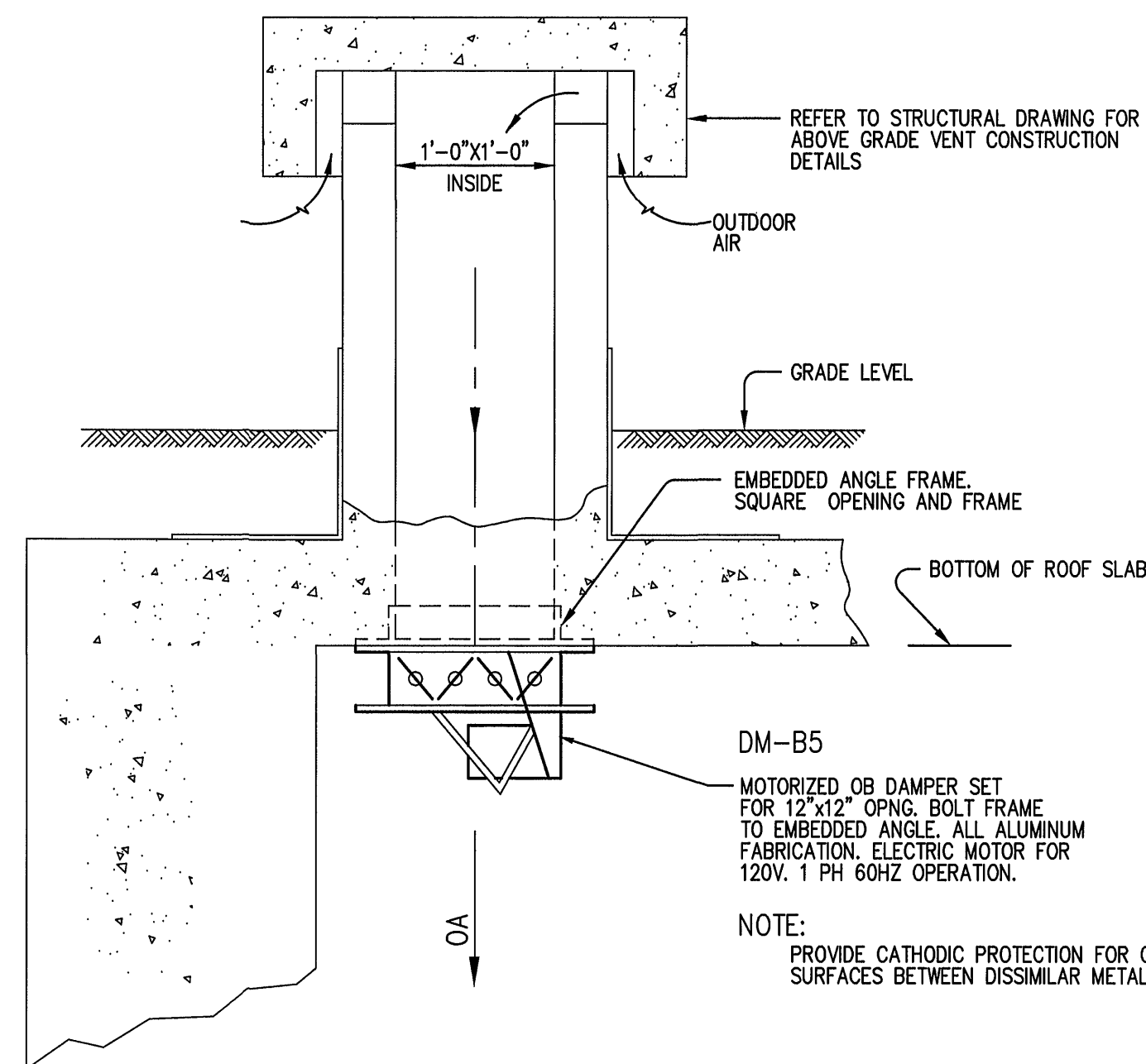
MANUAL OPERATION
THE FAN CAN BE ENERGIZED BY A SEPARATE HAND
SWITCH ON THE THERMOSTAT.

WINTER HEATING
ELECTRIC UNIT HEATER EUH-12 HAS AN ADJUSTABLE
INTEGRAL THERMOSTAT TO AUTOMATICALLY MAINTAIN
60° F ROOM TEMPERATURE.

DEHUMIDIFICATION
DEHUMIDIFIER HAS AUTOMATIC INTEGRAL HUMIDISTAT OPERATOR.

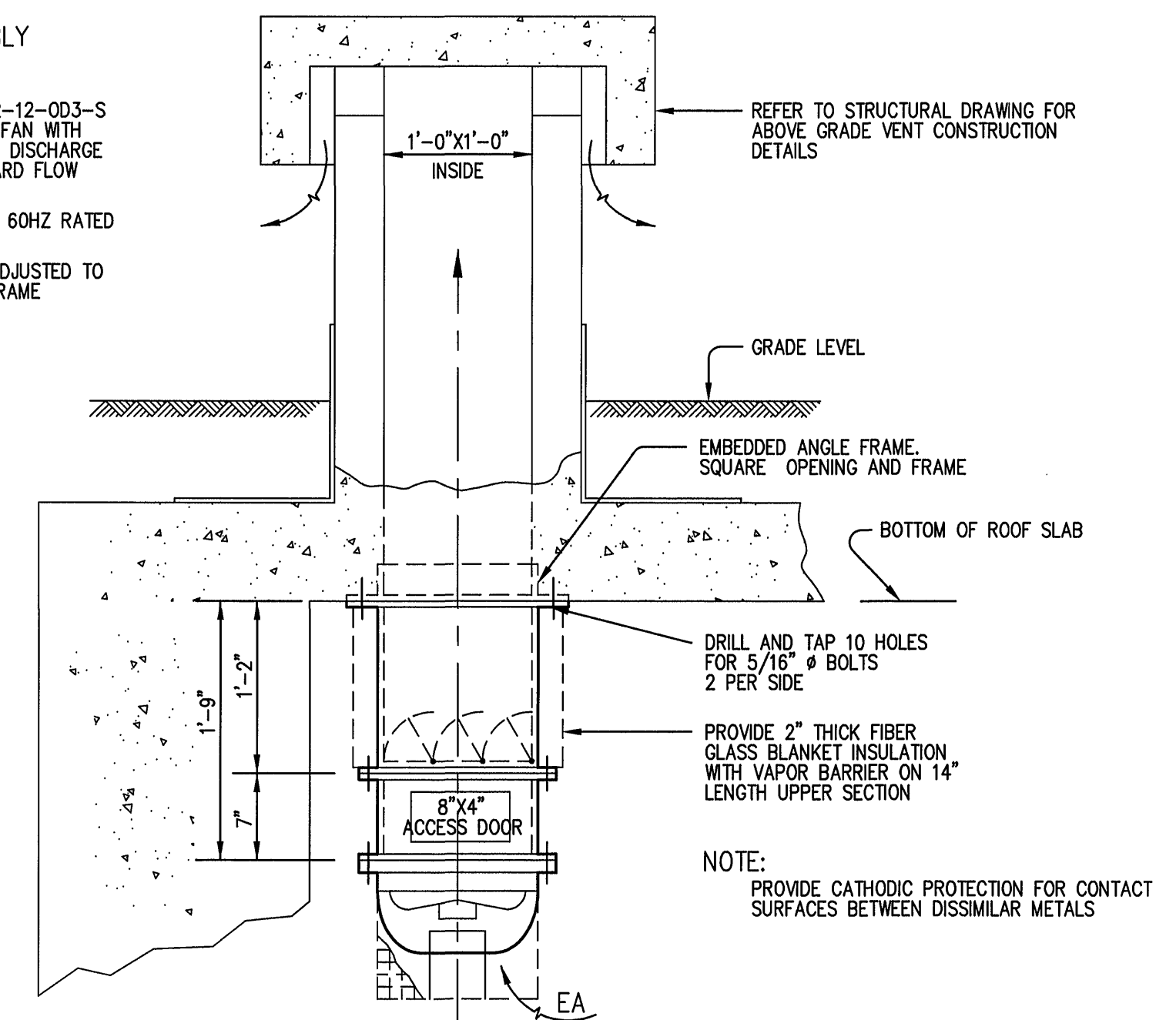
NOTE:

* DENOTES COMBINATION FIXED LOUVERS AND MOTORIZED
DAMPERS WITH MOTOR OPERATORS TO BE PROVIDED PER
THE ARCHITECTURAL SPECIFICATIONS AND DRAWINGS.



OUTDOOR AIR INTAKE DETAIL
SCALE: 1" = 1'-0"

EF-23
EXHAUST FAN ASSEMBLY
DESCRIPTION
HARTZELL FAN CO. MODEL 02-12-003-S
FACTORY PACKAGE EXHAUST FAN WITH
REAR GUARD AND MOTORIZED DISCHARGE
LOUVER ASSEMBLY FOR UPWARD FLOW
INSTALLATION
1/4 HP. TEFC MOTOR 115 IPH 60HZ RATED
1260 CFM @ 1/8" E.S.P.
ACTUAL DIMENSIONS TO BE ADJUSTED TO
SPECIFIC FAN AND LOUVER FRAME
REQUIREMENTS



EXHAUST FAN DETAIL
SCALE: 1" = 1'-0"

SCALE OF DRAWING 1/4" = 1'-0"
4' 3' 2' 1' 0' 4' 8'
SCALE OF DRAWING 1" = 1'-0"
1' 0' 1' 2'

DRAWING OF RECORD
DATE: SEP 30 1997

MATTERN & CRAIG CONSULTING ENGINEERS • SURVEYORS ROANOKE VIRGINIA	DESIGNED: sc		REV.	DATE	DESCRIPTION	BY	APP.	CARVINS COVE FILTER PLANT IMPROVEMENTS – PHASE I ROANOKE, VIRGINIA	DATE APRIL 1992
	DRAWN: LJ REF								COMM. NO. 9130
ALVORD, BURDICK & HOWSON ENGINEERS CHICAGO	CHECKED: sc							HVAC SYSTEMS – TYPICAL DETAILS	SHEET M9