

DATE:	July 1, 2005
REVISIONS	Δ
	Δ
	Δ
	Δ
	Δ

HUGHES ASSOCIATES ARCHITECTS
Architecture • Planning • Consulting

656 ELM AVENUE, S.W.
P.O. BOX 1034
ROANOKE, VIRGINIA 24005-1034

TEL (540) 342-4002
FAX (540) 342-2060
www.HughesArchitects.com

**WESTERN VIRGINIA
WATER AUTHORITY
COULTER BUILDING
PHASE II RENOVATIONS**
601 South Jefferson Street Roanoke, Virginia

**REFERENCE
FLOOR
PLANS**

PHASE 2



COMMISSION No.

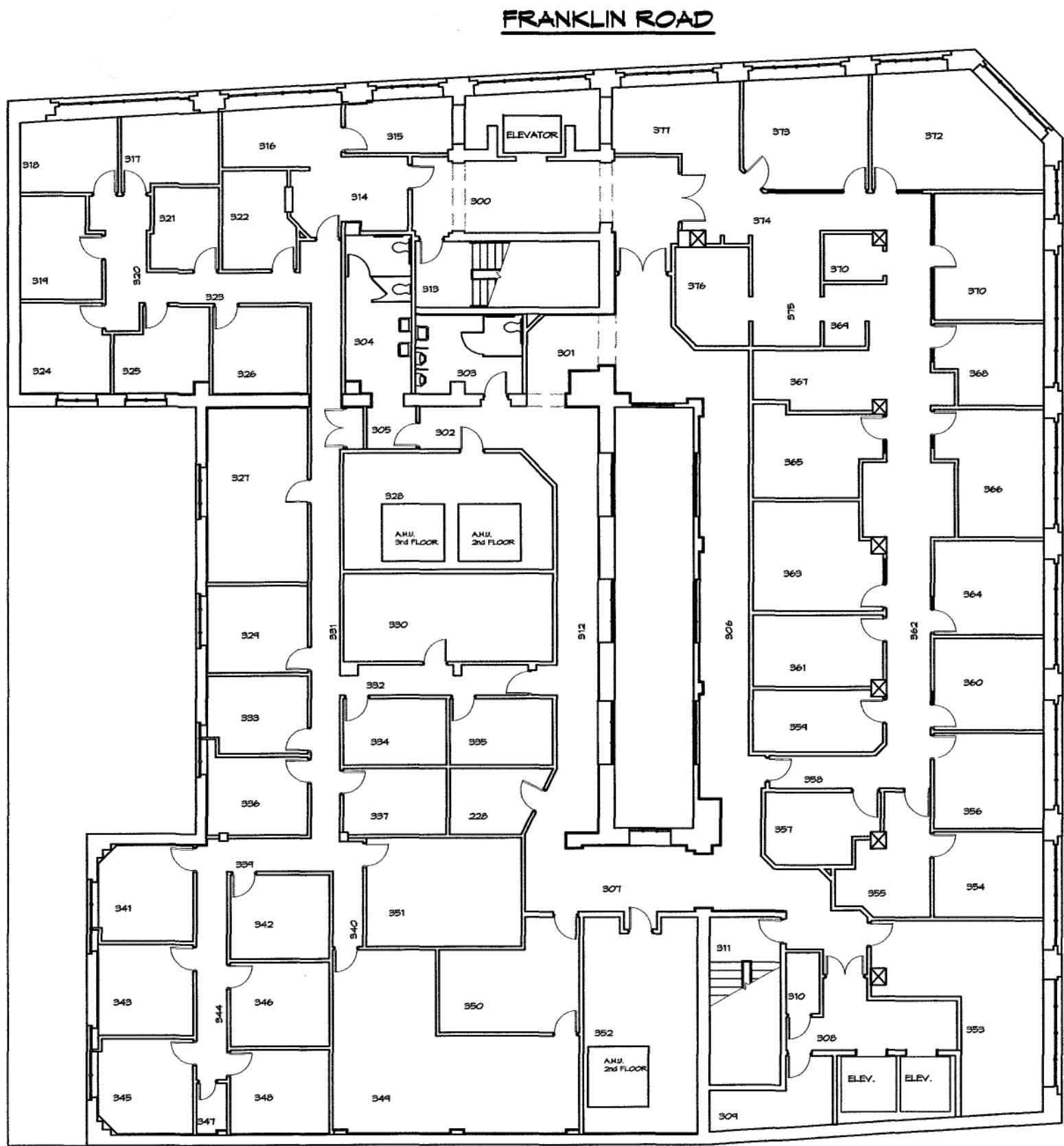
04102

SHEET

A1-2

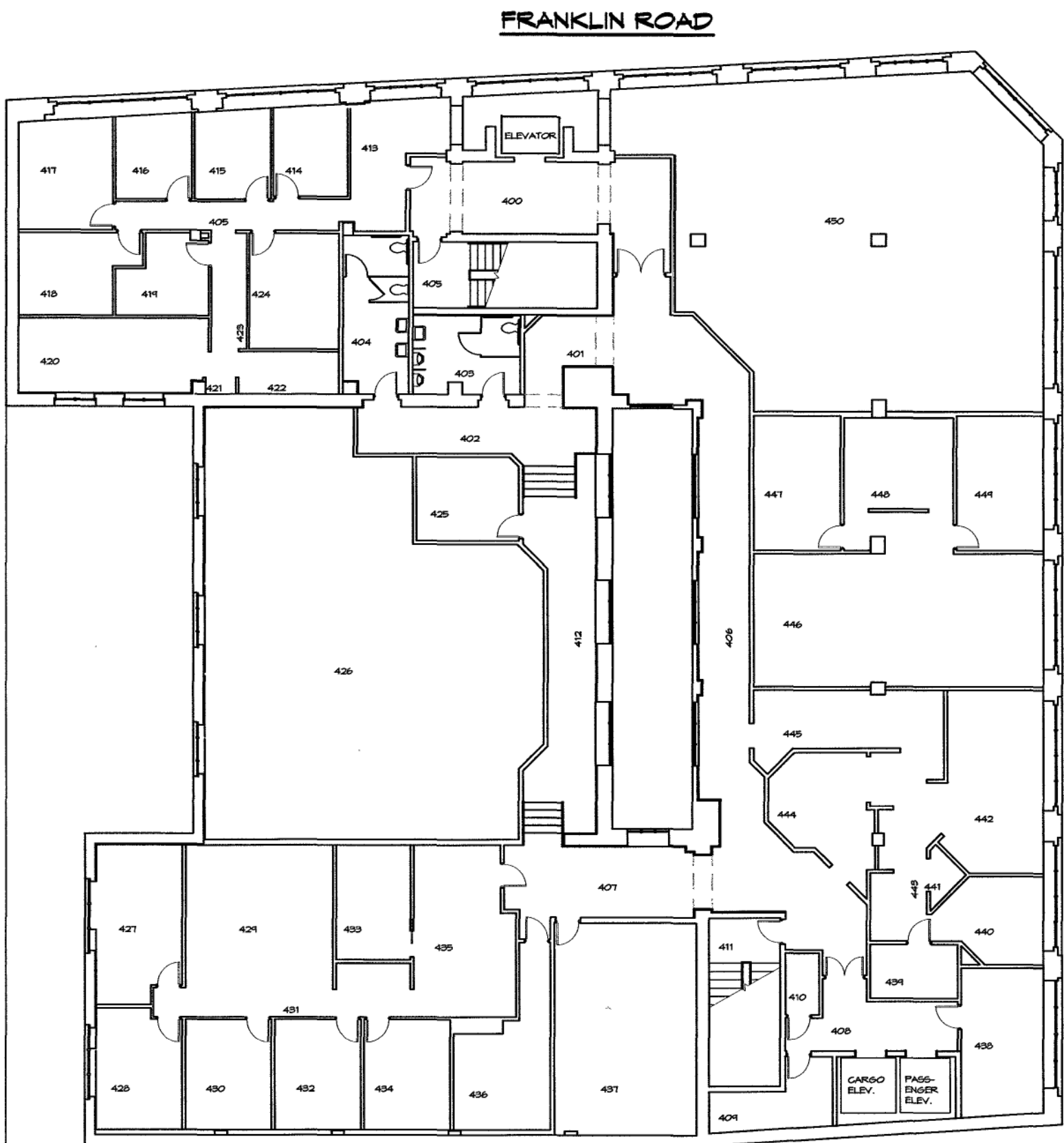
No. 8 of 18

© COPYRIGHT 2005
HUGHES ASSOCIATES ARCHITECTS
A PROFESSIONAL CORPORATION



THIRD FLOOR PLAN

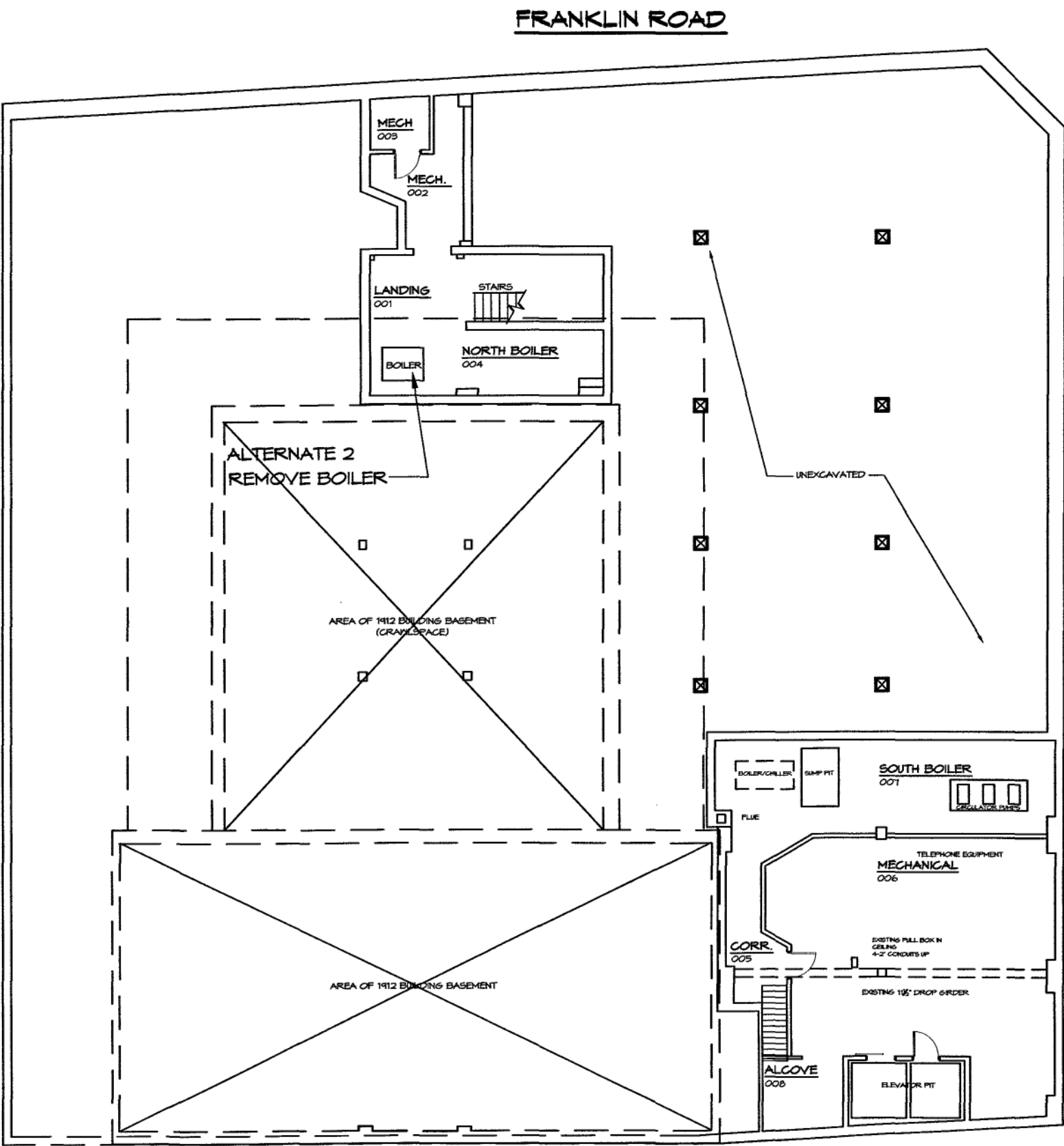
SCALE 1/8"=1'-0"
SHOWN FOR REFERENCE ONLY-
NO CONSTRUCTION THIS FLOOR



FOURTH FLOOR PLAN

SCALE 1/8"=1'-0"
SHOWN FOR REFERENCE ONLY-
NO CONSTRUCTION THIS FLOOR

NOTE:
ITEMS NOTED AS EXISTING CONDITIONS ARE BASED
ON DRAWINGS BY MARTIN BROTHERS GENERAL
CONTRACTORS DATED 1-4-1981. (RENOVATIONS
AND ALTERATIONS TO COULTER BUILDING AND
NATIONAL BUSINESS COLLEGE)



BASEMENT FLOOR PLAN

SCALE 1/8"=1'-0"

