

# HUGHES ASSOCIATES ARCHITECTS

Architecture • Planning • Consulting

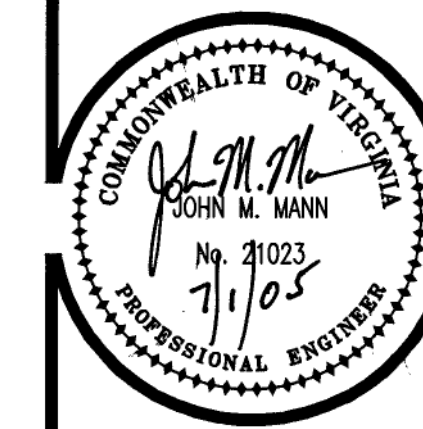
656 ELM AVENUE, S.W.  
 P.O. BOX 1034  
 ROANOKE, VIRGINIA 24005-1034

TEL (540) 342-4002  
 FAX (540) 342-2060  
 www.HughesArchitects.com

ALTERATIONS TO  
**WESTERN VIRGINIA  
 WATER AUTHORITY**  
 Jefferson Street at Franklin Road Roanoke, Virginia

## SECOND FLOOR PLAN

MANN & ASSOCIATES, INC.  
 306 Market Street  
 Roanoke, VA 24011  
 540-344-5513 Fax 543-0235



COMMISSION No.

04102

SHEET

M1-2

No. 14 OF 18

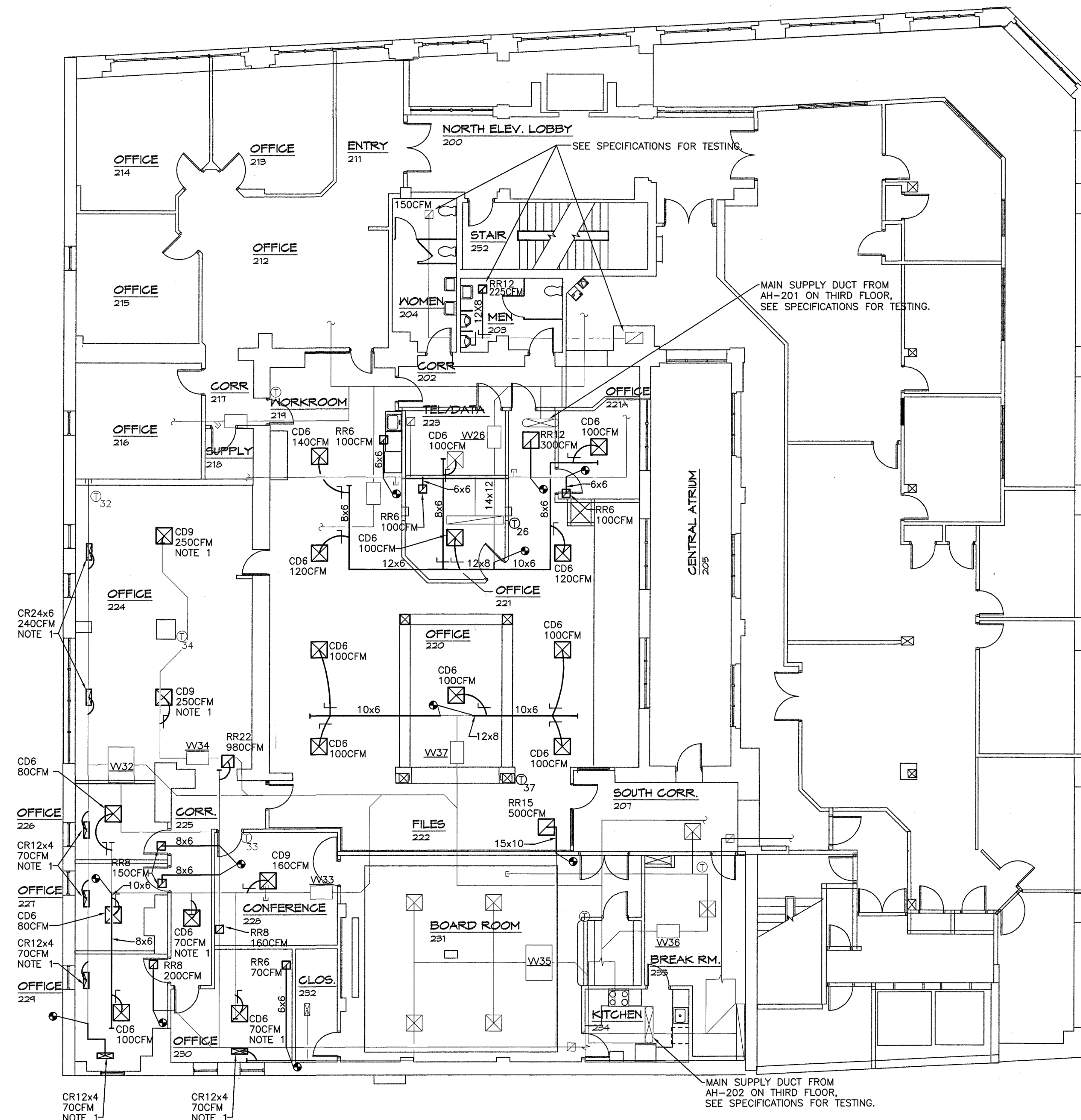
COPYRIGHT 2005 HUGHES ASSOCIATES ARCHITECTS

## MECHANICAL SPECIFICATIONS

1. CONTRACTOR SHALL VISIT THE SITE PRIOR TO BIDDING IN ORDER TO BECOME FAMILIAR WITH EXISTING CONDITIONS OF THE SPACE AND ADJACENT AREAS. COORDINATE WITH EXISTING STRUCTURE AND OTHER TRADES.
2. ALL WORK SHALL COMPLY WITH THE VIRGINIA UNIFORM STATEWIDE BUILDING CODE, THE 2000 ISSUE OF THE INTERNATIONAL MECHANICAL CODE, NFPA, AND LOCAL REGULATIONS. ARRANGE AND PAY FOR ALL PERMITS AND INSPECTIONS.
3. DRAWINGS INDICATE GENERAL LAYOUT OF DUCTWORK AND EQUIPMENT. COORDINATE INSTALLATION WITH OTHER TRADES AND ACTUAL CONDITIONS AND PROVIDE ADDITIONAL FITTINGS, OFFSETS AND TRANSITIONS AS REQUIRED.
4. MECHANICAL EQUIPMENT, MATERIALS AND LABOR SHALL INCLUDE A ONE YEAR WARRANTY.
5. SUBMIT SHOP DRAWINGS FOR REVIEW ON ALL EQUIPMENT.
6. PROVIDE TWO BOUND SETS OF APPROVED SHOP DRAWING INFORMATION AND ALL MANUFACTURERS' INSTRUCTIONS FOR OPERATION AND MAINTENANCE. PROVIDE RED LINED AS-BUILT DRAWINGS AT THE END OF THE PROJECT INDICATING INSTALLED CONDITIONS, LOCATIONS AND EQUIPMENT.
7. COORDINATE LOCATIONS OF CEILING MOUNTED DIFFUSERS AND OTHER ITEMS WITH LIGHT FIXTURES.
8. VERIFY AND DEMONSTRATE TO OWNER THE OPERATION OF ALL EQUIPMENT AND CONTROLS. BALANCE AIRFLOW WITH DAMPERS FOR ACCEPTABLE SPACE TEMPERATURES AND NOISE LEVELS.
9. DUCTWORK SHALL BE GALVANIZED SHEET METAL PER SMACNA WITH TURNING VANES IN ELBOWS AND MANUAL DAMPERS FOR BALANCING. INSULATE DUCTS WITH 2" FIBERGLASS WRAP WITH ALL SERVICE VAPOR BARRIER JACKET.
10. FLEXIBLE DUCTS SHALL HAVE STEEL WIRE HELIX REINFORCEMENT, CONTINUOUS INNER LINER, 1-1/2" FIBERGLASS INSULATION AND OUTER JACKET TO COMPLY WITH UL 181, CLASS 1, DIAMETER OF FLEX DUCT SHALL MATCH DIFFUSER INLET SIZE. MAXIMUM LENGTH IS TEN FEET.
11. APPLY UL RATED FIRE STOPPING SEALANT AROUND DUCTS AND PIPES THAT PENETRATE RATED WALLS AND FLOORS.
12. FIRE DAMPERS SHALL BE STYLE B DYNAMIC TYPE, UL LISTED, 1 1/2 HOUR RATING. PROVIDE ACCESS DOOR ADJACENT TO ALL DAMPERS.
13. CEILING DIFFUSERS (CD) TO BE EXTRUDED ALUMINUM WITH DAMPER, METAL AIRE 5000 SERIES FOR LAY-IN CEILING (OR SURFACE MOUNT WHERE REQUIRED), FOUR WAY THROW UNLESS INDICATED OTHERWISE. CEILING SUPPLY REGISTERS (CR) TO BE SIDEWALL TYPE REGISTER, ALUMINUM, HORIZONTAL BLADES, H4004 SERIES WITH DAMPER. CEILING RETURN REGISTERS (RR) TO BE PERFORATED 7000R SERIES FOR LAY-IN CEILING OR SURFACE MOUNT.
14. TEST AND BALANCE VAV BOXES AND ALL AIR FLOWS INDICATED FOR PROPER OPERATION AND AIRFLOW. TEST AND MEASURE VAV BOX AIR FLOWS AT MAXIMUM AND MINIMUM (1/3 MAX) AND HEATING WHERE APPLICABLE. ADJUST DAMPERS AS REQUIRED. SEE NOTES 15 AND 16 BELOW FOR ADDITIONAL TESTING. PERFORM TAB AND RECORD RESULTS PER ASHRAE OR NEBB STANDARDS. SUBMIT TWO COPIES OF REPORT FOR REVIEW.
15. EXISTING AIR HANDLERS: TEST EXISTING AH-201 AND AH-202 LOCATED IN THIRD FLOOR MECHANICAL ROOMS. MAKE ADJUSTMENTS AND VERIFY OPERATION OF INLET VANES, CHILLED WATER VALVES, AND SYSTEM CONTROLS. LUBRICATE UNIT, REPLACE BELTS AND FILTERS, AND MAKE ADJUSTMENTS NECESSARY FOR PROPER OPERATION. REVIEW OCCUPANCY SCHEDULE AND REVISE SCHEDULE PROGRAM PER OWNER'S REQUIREMENTS. NOTIFY OWNER OF ANY EQUIPMENT OR DEVICES THAT REQUIRE REPLACEMENT.
16. TEST AND BALANCE AIRFLOW OF TOILET EXHAUST GRILLES. TEST EXISTING EXHAUST FAN ON ROOF AND MAKE ADJUSTMENTS AS NECESSARY FOR PROPER AIRFLOW AND OPERATION. LUBRICATE AND CHANGE BELT OF EXHAUST FAN.

## NOTES THIS SHEET

1. PROVIDE NEW DUCT CONNECTION FROM EXISTING BRANCH DUCT TO NEW CEILING DIFFUSER/REGISTER. PROVIDE MANUAL VOLUME DAMPER AT CONNECTION.



## SECOND FLOOR PLAN

SCALE: 1/8" = 1'-0"