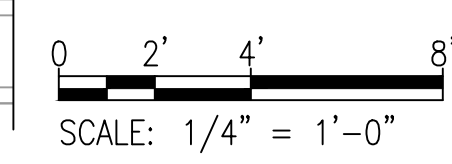
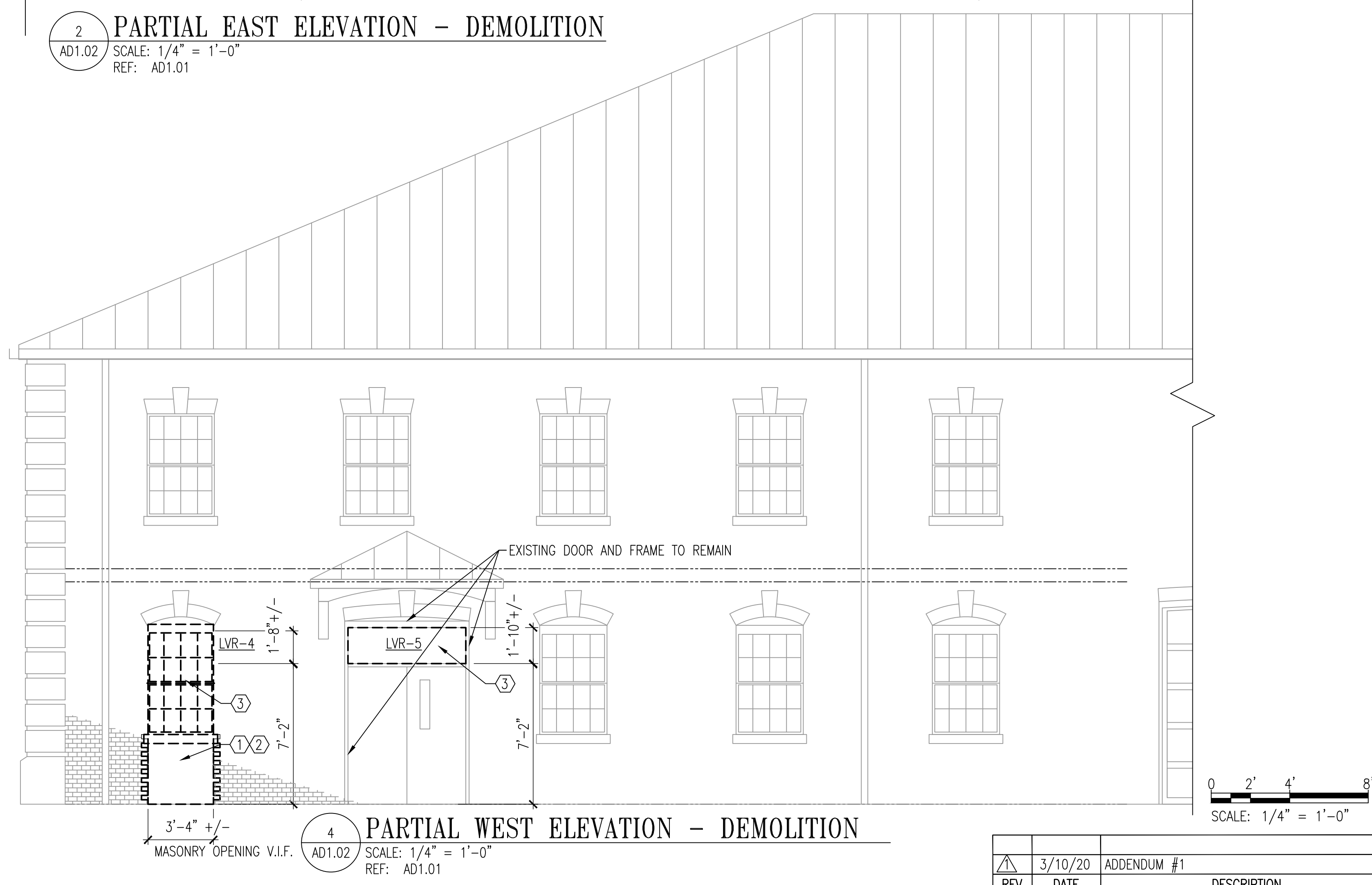
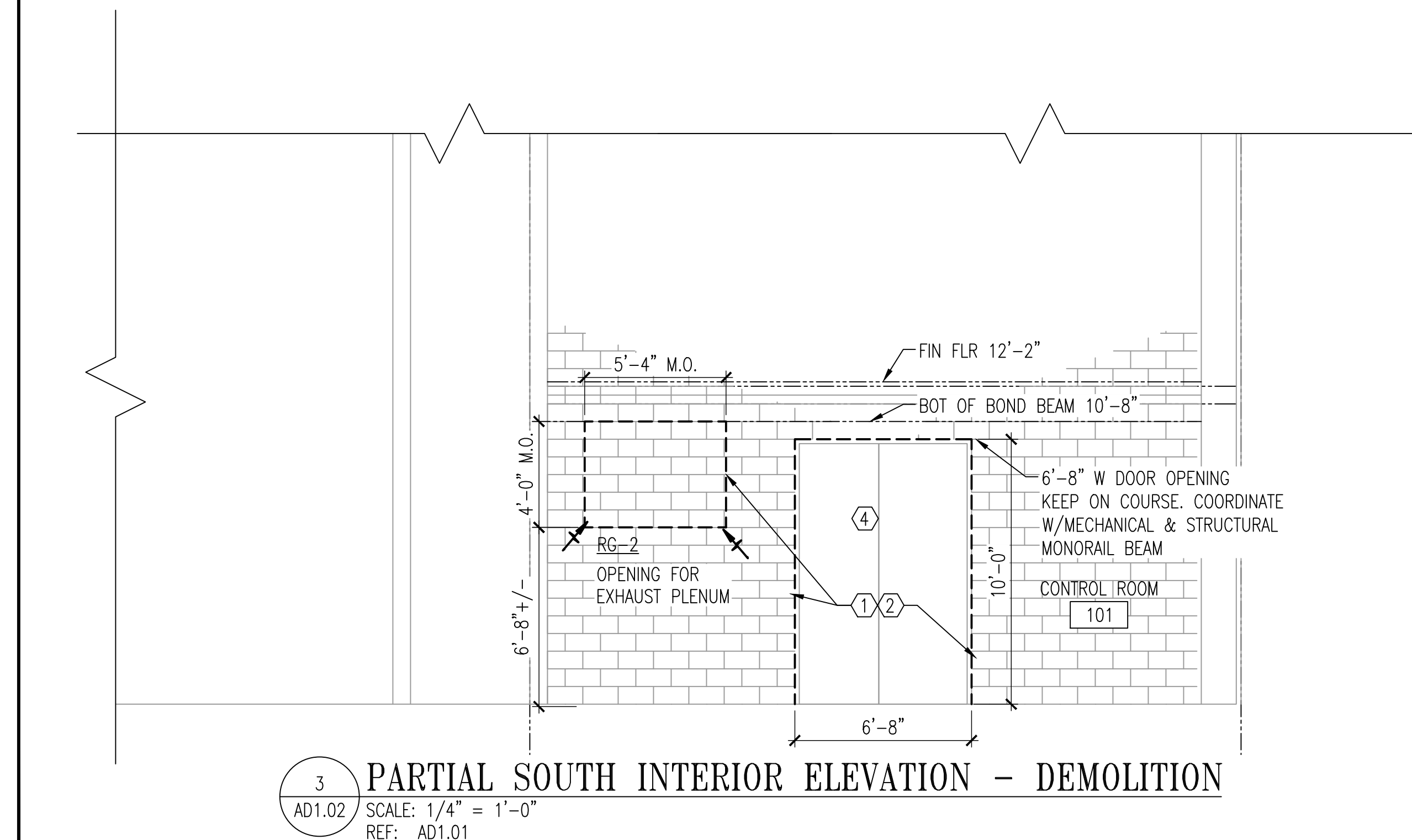


- SHEET KEYNOTES** ①
- ① PROVIDE OPENINGS IN EXISTING MASONRY FOR INSTALLATION OF NEW DOORS AND LOUVERS. COORDINATE OPENINGS WITH MECHANICAL AND STRUCTURAL.
 - ② CAREFULLY REMOVE AND SALVAGE FACE BRICK OR MASONRY FOR REUSE IN NEW WORK.
 - ③ CAREFULLY REMOVE EXISTING WINDOW UNIT AND/OR DOOR TRANSOM PANEL FOR DISPOSITION BY OWNER. PREPARE OPENING FOR NEW WORK.
 - ④ CAREFULLY REMOVE DOOR AND FRAME.
 - ⑤ REMOVE EXISTING DOWNSPOUT AND SEAL GUTTER OPENING. SEE A1.02 FOR REPLACEMENT.



WESTERN VIRGINIA WATER AUTHORITY
601 South Jefferson Street, Suite 300
Roanoke, Virginia 24011

DES:	RK	SCALE:	1/4"
DRAWN:	PKI	HORIZ:	N/A
CHECK:	DAK	VERT:	N/A
DATE:	1/24/20		

CRYSTAL SPRING
PUMP STATION RELOCATION

BUILDING ELEVATIONS - DEMOLITION

REV	DATE	DESCRIPTION	DRAWING	SHEET
	3/10/20	ADDENDUM #1	AD1.02	30