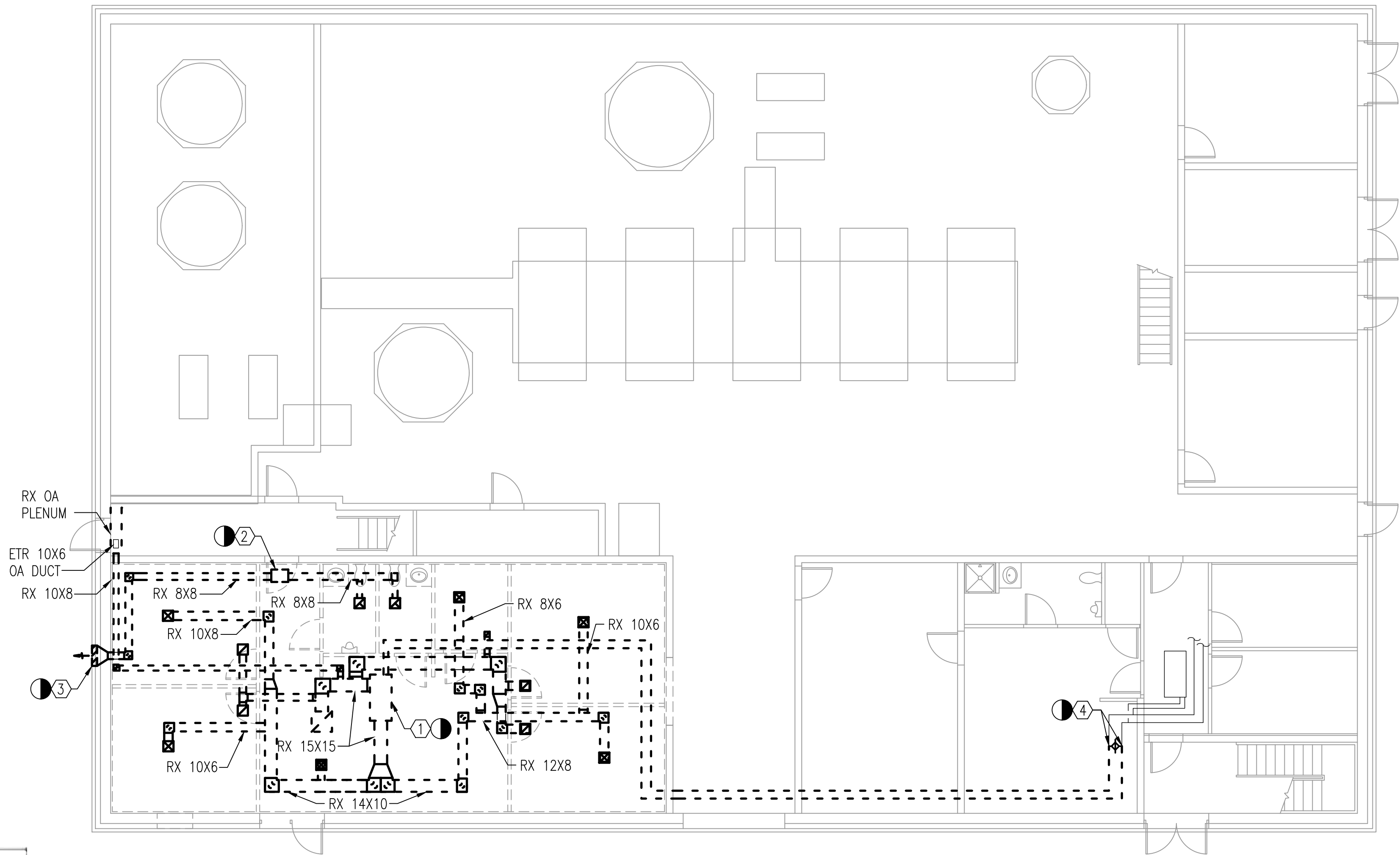


GENERAL SHEET NOTES

- 1. REFER TO DRAWING HVO.01 FOR MECHANICAL LEGEND, ABBREVIATIONS, AND GENERAL NOTES.
- 2. REMOVE ALL MECHANICAL EQUIPMENT, DUCTWORK, AND PIPING UNLESS OTHERWISE INDICATED.

DEMOLITION KEYNOTES

- ① REMOVE WATER SOURCE HEAT PUMP UNIT INCLUDING ASSOCIATED DUCTWORK, GRILLES, WIRING, AND CONTROLS.
- ② REMOVE EXISTING INLINE EXHAUST FAN INCLUDING ASSOCIATED DUCTWORK, GRILLES, WIRING, AND CONTROLS.
- ③ BLANK OFF EXISTING LOUVER.
- ④ REMOVE EXISTING 1-1/4" HYDRONIC PIPING BACK TO LOCATION SHOWN. REFER TO SHEET HV1.01. PROVIDE BYPASS AND BALANCING VALVE FOR EXISTING 1-1/4" HPWS AND HPWR. PRIOR TO BEGINNING ANY WORK, MEASURE FLOW RATE OF EXISTING SYSTEM. UPON COMPLETION OF NEW WORK, REBALANCE EXISTING WATER SOURCE HEAT PUMP SYSTEM AS REQUIRED TO MAINTAIN EXISTING FLOW RATE.



HVAC FLOOR PLAN - DEMOLITION
SCALE: 1/8" = 1'-0"



WESTERN VIRGINIA WATER AUTHORITY
601 South Jefferson Street, Suite 300
Roanoke, Virginia 24011

DES:	NAE	SCALE:	1/8" = 1'-0"
DRAWN:	NAE	HORIZ:	N/A
CHECK:	CAH	VERT:	N/A
DATE:	1/24/20		

CRYSTAL SPRING
PUMP STATION RELOCATION

HVAC FLOOR PLAN - DEMOLITION

DRAWING
HVD1.01

SHEET
45

REV	DATE	DESCRIPTION