

GENERAL SHEET NOTES

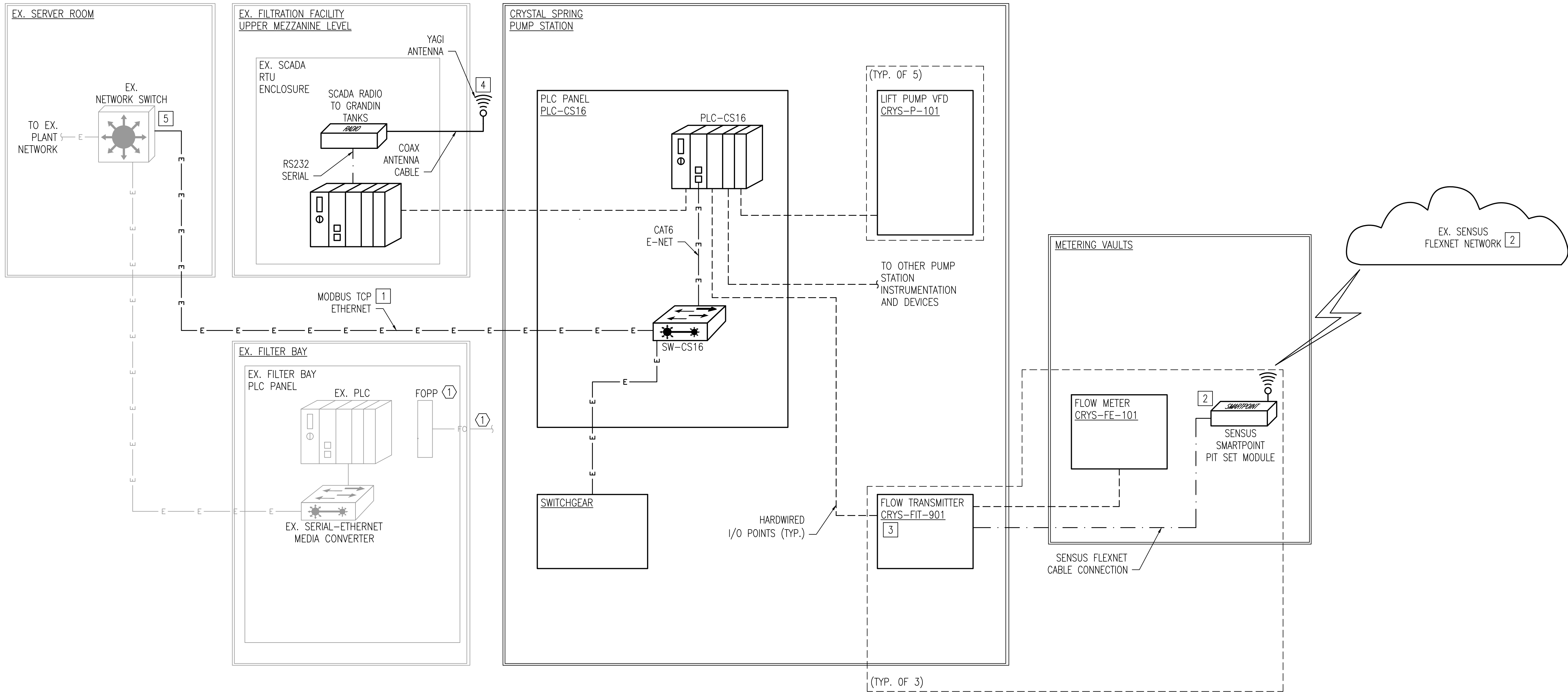
- SEE I&C SYMBOLS, LEGENDS AND ABBREVIATIONS SHEETS FOR DETAILS.
- SEE ELECTRICAL DRAWINGS FOR ADDITIONAL INSTALLATION AND EQUIPMENT REQUIREMENTS.
- NOT ALL ETHERNET PORT CONNECTIONS SHOWN FOR CLARITY.
- COORDINATE ADDRESSING SCHEMES WITH OWNER. THE PLC ETHERNET SWITCH SHALL BE CONFIGURED IN ACCORDANCE WITH THE REQUIREMENTS OF THE OWNER.
- ALL FIBER OPTIC CABLES, FIBER PATCH PANELS, AND TERMINATIONS SHALL BE THE RESPONSIBILITY OF THE SYSTEM INTEGRATOR.

SHEET KEYNOTES

- PROVIDE NEW CATEGORY 6 CABLE.
- THE CONTRACTOR SHALL BE RESPONSIBLE FOR COORDINATION WITH THE OWNER ON CONNECTING TO THEIR EXISTING SENSUS FLEXNET NETWORK. CONTRACTOR SHALL PROVIDE AND INSTALL NEW SENSUS 520M SMARTPOINTS AND CONFIGURE AND TEST THE SMARTPOINT CONNECTIONS TO THE EXISTING SENSUS FLEXNET NETWORK.
- FLOW TRANSMITTER SHALL BE CONFIGURED TO PROVIDE BOTH A 4-20 mA ANALOG OUTPUT TO THE PLC PANEL AND A CONNECTION TO A SENSUS SMARTPOINT MODULE.
- COORDINATE ANTENNA MOUNTING DIRECTION WITH AUTHORITY. REFER TO INSTRUMENTATION DETAILS FOR ANTENNA MOUNTING REQUIREMENTS.
- CONTRACTOR SHALL COORDINATE TERMINATION OF CAT6 CABLE AT APPROPRIATE SPARE RJ45 PORT AT SERVER ROOM NETWORK SWITCH.

DEMOLITION KEYNOTES

- REMOVE EX. FIBER OPTIC CABLE AND EX. SERIAL FIBER OPTIC CONVERTER FROM EX. FILTER BAY PLC PANEL.



CRYSTAL SPRING
NETWORK ARCHITECTURE
1
1-6
SCALE: NONE



WESTERN VIRGINIA WATER AUTHORITY
601 South Jefferson Street, Suite 300
Roanoke, Virginia 24011

DES:	JJN	SCALE:	NOT TO SCALE
DRAWN:	JJN	HORIZ:	N/A
CHECK:	PWG	VERT:	N/A
DATE:	1/24/20		

CRYSTAL SPRING
PUMP STATION RELOCATION

NETWORK ARCHITECTURE

DRAWING
10.07

SHEET
73

REV	DATE	DESCRIPTION