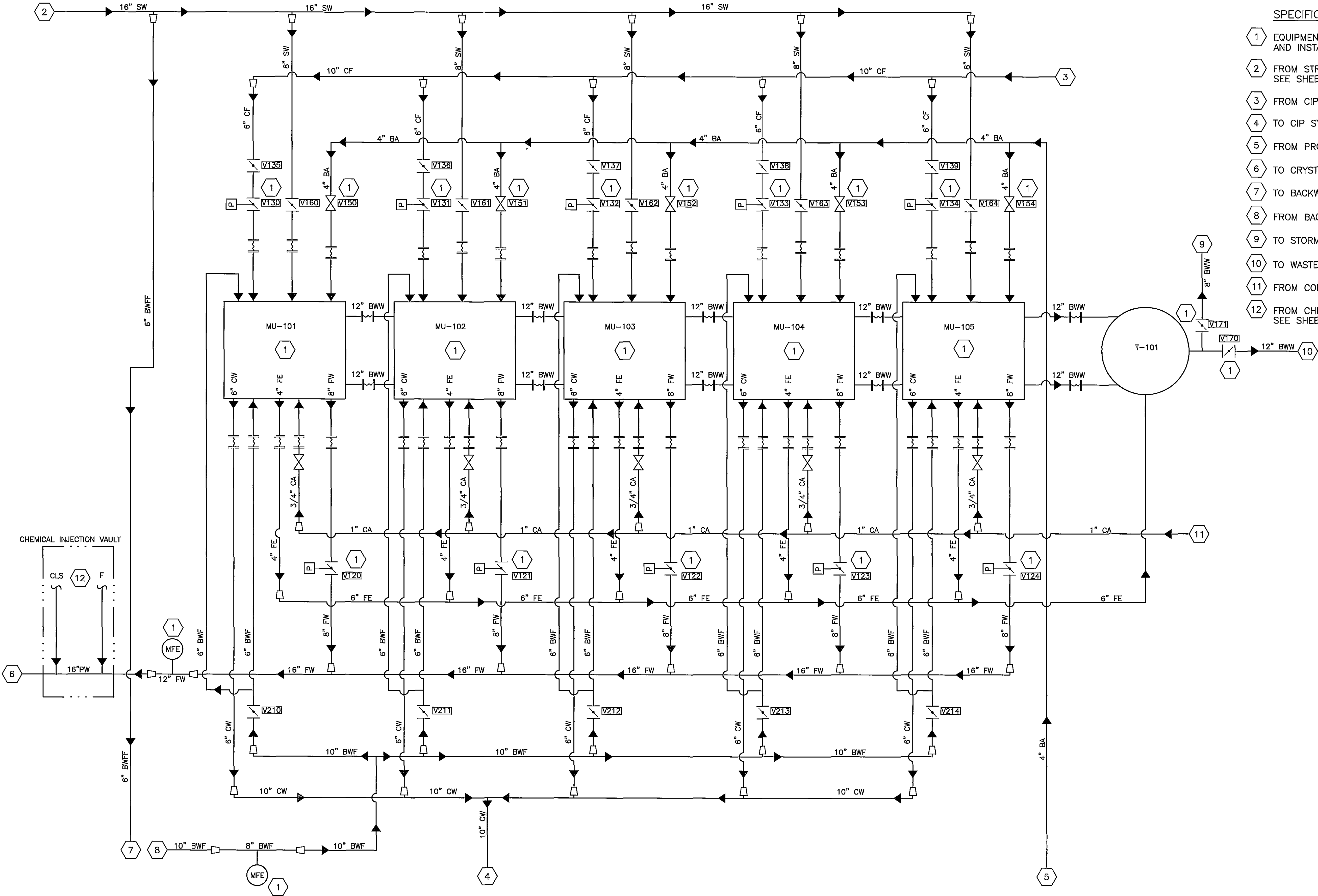


GENERAL NOTES:

A SEE SHEET P-21, FOR VALVE SCHEDULE OF ALL VALVES  
GREATER THAN 4" DIA

SPECIFIC NOTES:

- 1 EQUIPMENT TO BE SUPPLIED BY US FILTER-MEMCOR  
AND INSTALLED BY GENERAL CONTRACTOR
- 2 FROM STRAINER VAULT AND FLOW METER VAULT,  
SEE SHEET P-2
- 3 FROM CIP SYSTEM, SEE SHEET P-5
- 4 TO CIP SYSTEM, SEE SHEET P-5
- 5 FROM PROCESS AIR, SEE SHEET P-6
- 6 TO CRYSTAL SPRING CLEARWELL
- 7 TO BACKWASH FORWARDING SYSTEM, SEE SHEET P-4
- 8 FROM BACKWASH FORWARDING SYSTEM, SEE SHEET P-4
- 9 TO STORM SEWER
- 10 TO WASTE NEUTRALIZATION SYSTEM, SEE SHEET P-4 & P-9
- 11 FROM CONTROL AIR SYSTEM, SEE SHEET P-6
- 12 FROM CHLORINE AND FLUORIDE FEED EQUIPMENT,  
SEE SHEET P-4



RECORD DRAWING  
This record drawing has been prepared, in part,  
based upon information furnished by others.  
While this information is believed to be reliable,  
HDR Engineering, Inc cannot assure its  
accuracy, and thus is not responsible for the  
accuracy of this record drawing or for any  
errors or omissions which may have been in-  
corporated into it as a result. Those relying on  
this record document are advised to obtain  
independent verification of its accuracy before  
applying it for any purpose

RECORD DRAWING  
APRIL 28, 2003

Wiley & Wilson  
ARCHITECTS ENGINEERS PLANNERS  
An Employee Owned Company  
2310 LANGHORNE ROAD P O BOX 877  
LYNCHBURG, VIRGINIA LYNCHBURG, VIRGINIA  
24501 24505-0877  
(804) 947-1901

IN ASSOCIATION WITH  
HDR  
HDR Engineering, Inc.

DESIGNED ADE	DRAWN JMB	PROJECT CRYSTAL SPRING WATER TREATMENT PLANT FOR THE CITY OF ROANOKE, VIRGINIA
CHECKED PJD		REFERENCE
COMM NO		TITLE DETAILED PROCESS SCHEMATIC
CADD NO		DWG NO P-3
DATE AUGUST 27, 2001		SHEET NO REV

1	9/13/2001			REVISED AS PER ADDENDUM DATED (9/13/2001)
0	8/27/2001			ISSUED FOR CONSTRUCTION
REV	DATE	BY	APP	DESCRIPTION