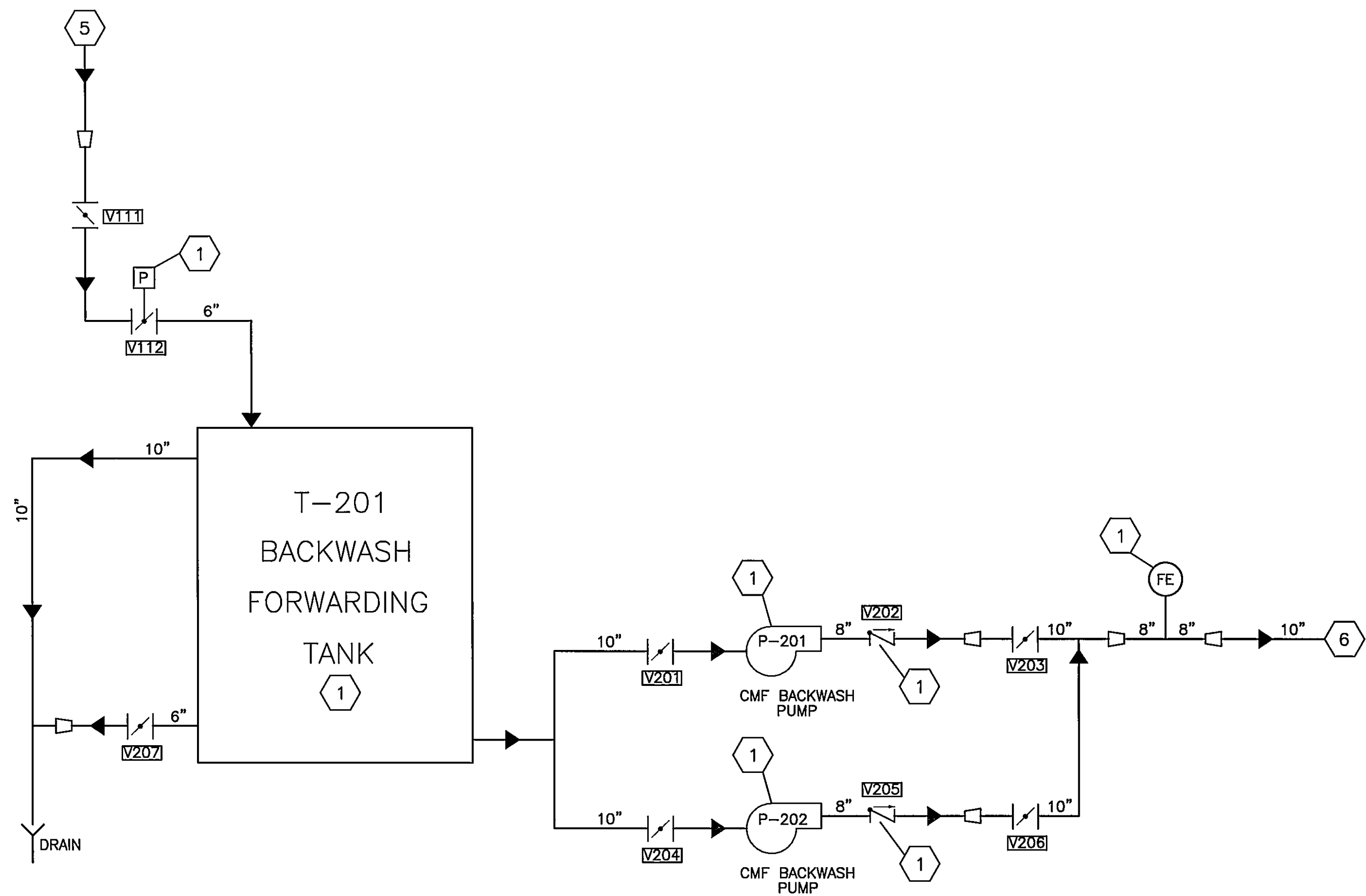
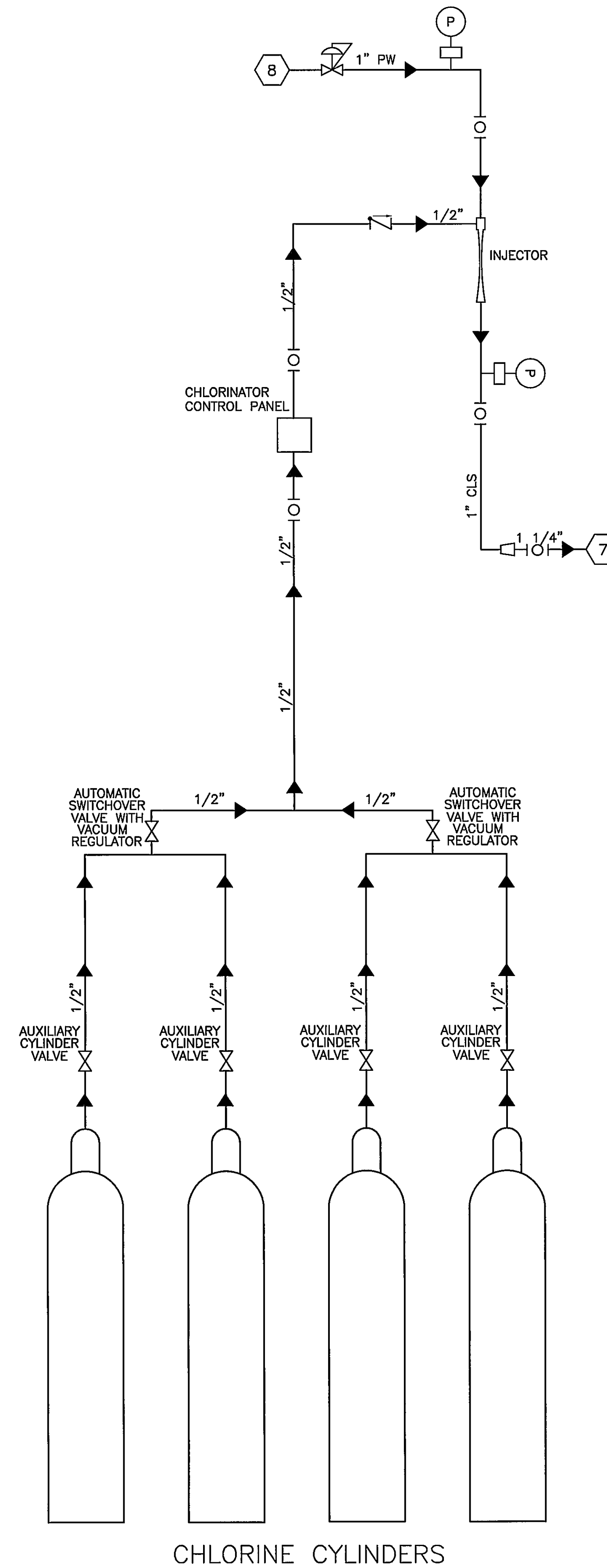


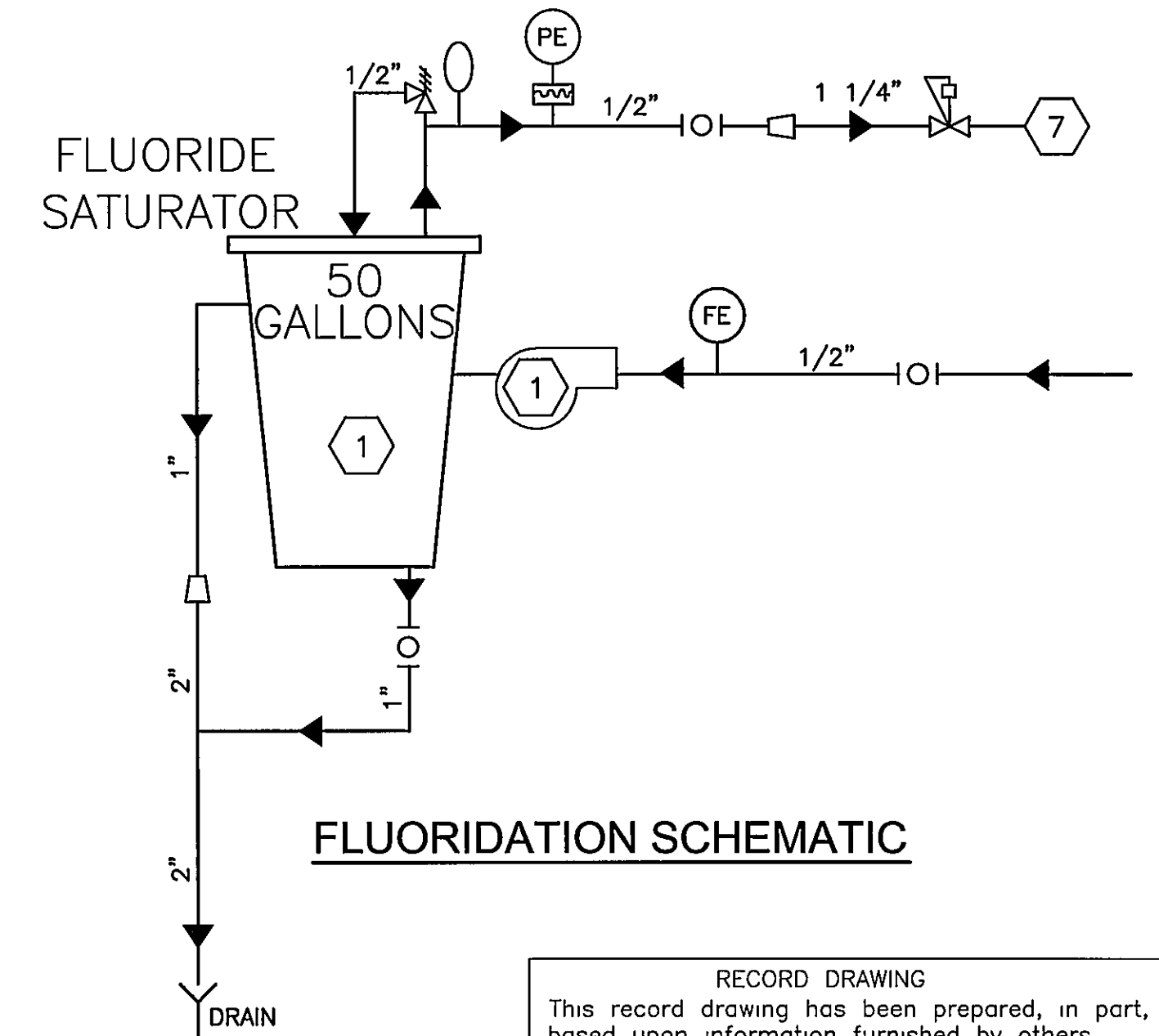
CIP WASTE SCHEMATIC



BACKWASH FORWARDING SCHEMATIC



CHLORINATION SCHEMATIC



FLUORIDATION SCHEMATIC

GENERAL NOTES

A SCHEMATIC PROVIDED FOR EQUIPMENT CONTRACTOR INFORMATION ONLY

SPECIFIC NOTES:

- 1 EQUIPMENT TO BE SUPPLIED BY US FILTER/MEMCOR AND INSTALLED BY GENERAL CONTRACTOR
- 2 FROM PROCESS AREA, SEE SHEET P-3, P-5 AND P-9
- 3 NOT USED
- 4 TO SANITARY SEWER
- 5 FROM 16" SW
- 6 TO MEMBRANE UNITS, SEE SHEET P-3
- 7 TO CHEMICAL INJECTION VAULT, SEE SHEET P-3
- 8 POTABLE WATER

RECORD DRAWING  
This record drawing has been prepared, in part, based upon information furnished by others. While this information is believed to be reliable, HDR Engineering, Inc. cannot assure its accuracy, and thus is not responsible for the accuracy of this record drawing or for any errors or omissions which may have been incorporated into it as a result. Those relying on this record document are advised to obtain independent verification of its accuracy before applying it for any purpose.

**RECORD DRAWING**  
**APRIL 28, 2003**

**Wiley & Wilson**  
ARCHITECTS ENGINEERS PLANNERS  
An Employee-Owned Company  
2310 LANGHORNE ROAD LYNCHBURG, VIRGINIA 24501 (804) 947-1901  
P O BOX 877 LYNCHBURG, VIRGINIA 24505-0877

IN ASSOCIATION WITH  
**HDR**  
HDR Engineering, Inc.

DESIGNED ADE	DRAWN JMB	PROJECT CRYSTAL SPRING WATER TREATMENT PLANT FOR THE CITY OF ROANOKE, VIRGINIA
CHECKED PJD		REFERENCE PROCESS
COMM NO		TITLE MISCELLANEOUS SCHEMATICS
CADD NO		DWG NO P-4
DATE AUGUST 27, 2001		SHEET NO REV

1	9/13/2001			REVISED AS PER ADDENDUM DATED (9/13/2001)
0	8/27/2001			ISSUED FOR CONSTRUCTION
REV	DATE	BY	APP	DESCRIPTION