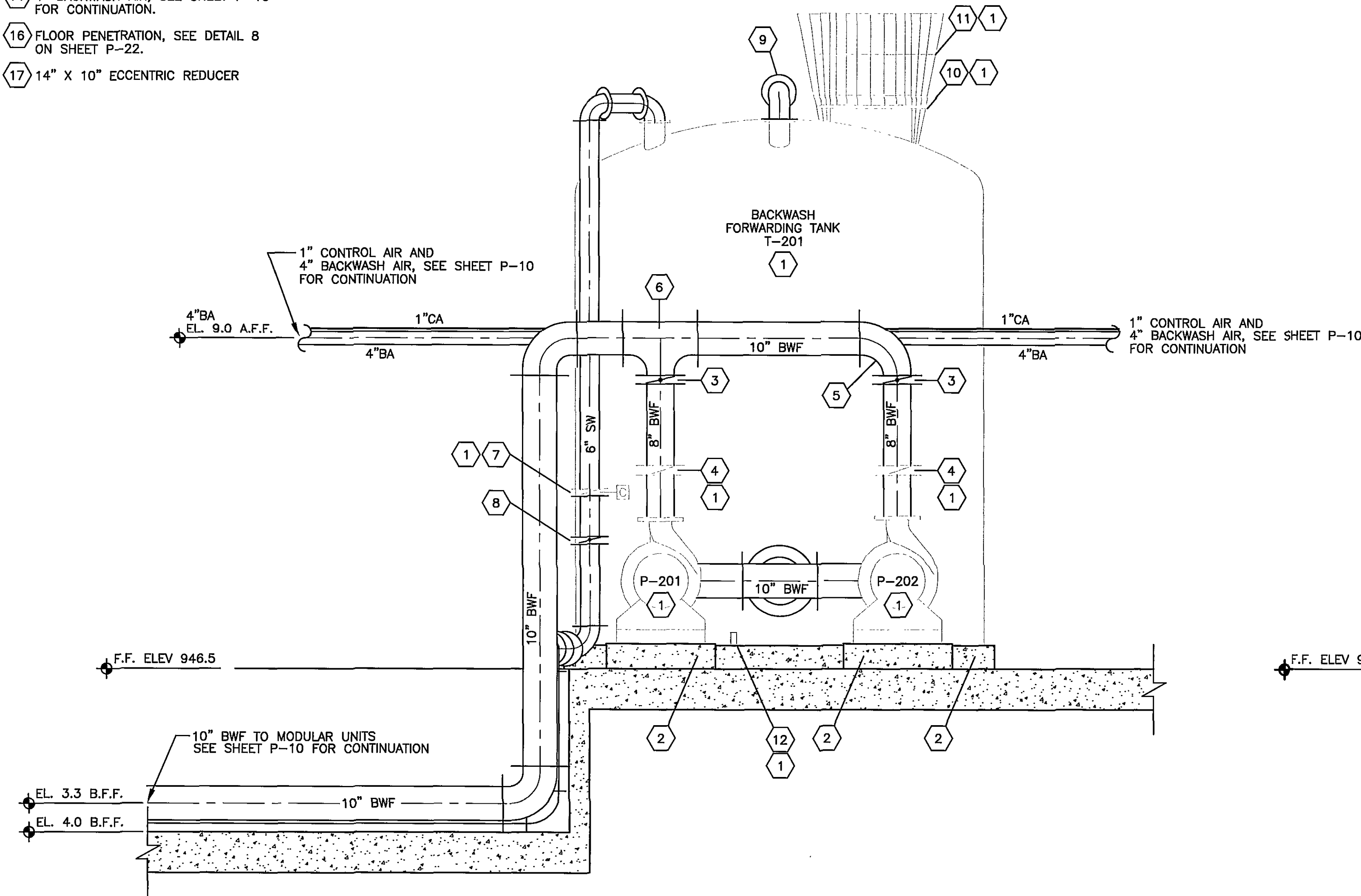


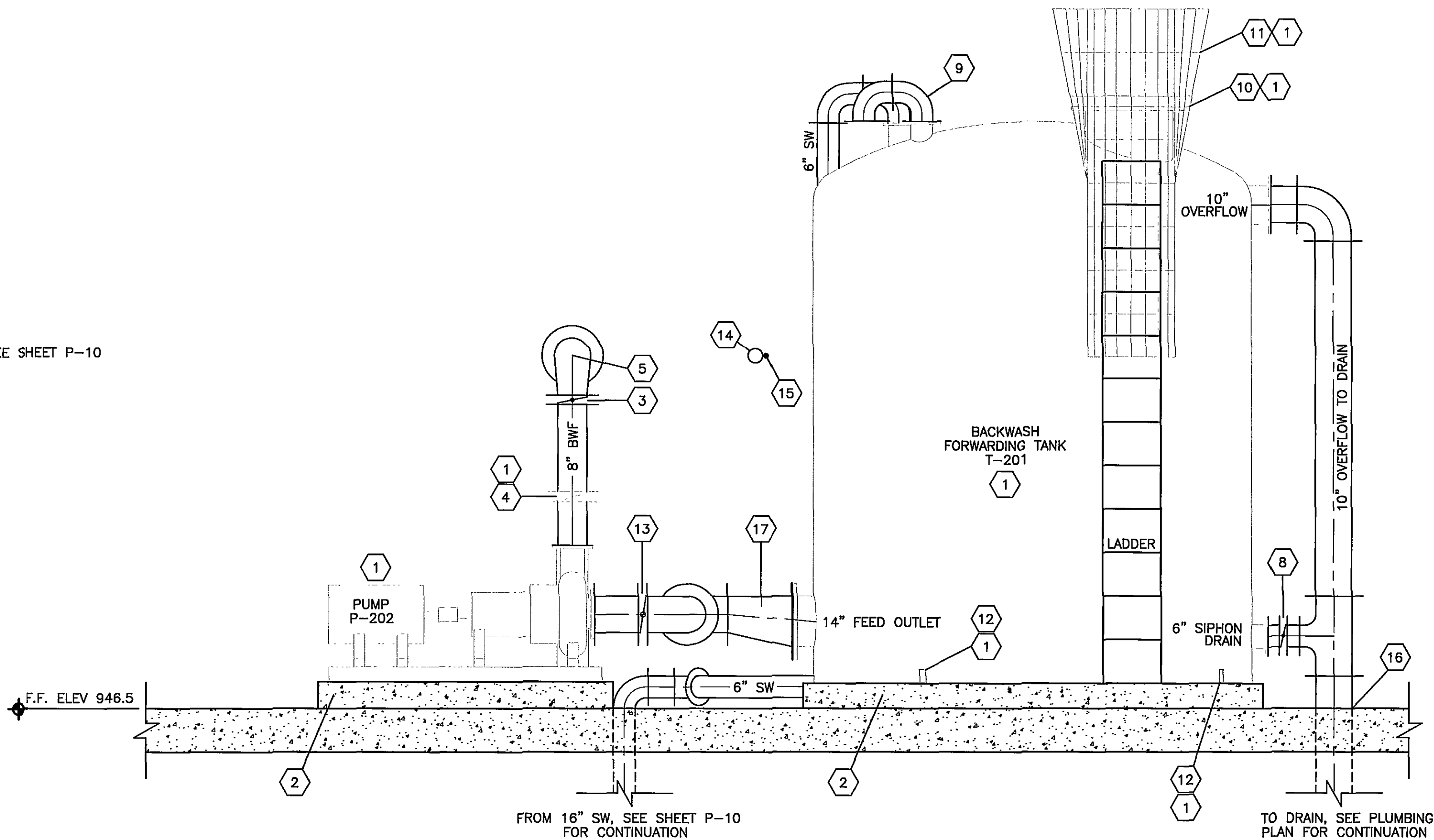
- GENERAL NOTES:
- A. GRAY SCALE EQUIPMENT PROVIDED BY US FILTER-MEMCOR
INSTALLED BY THE GENERAL CONTRACTOR.
- B. COORDINATE EQUIPMENT DELIVERY WITH US FILTER-MEMCOR
AND CITY ENGINEER.
- C. F.F. ELEV. 946.50 IS TOP OF FLOOR ELEV AT WALL.
ACTUAL FLOOR ELEV. WILL VARY WITH SLOPE TO DRAIN.
ALL ELEV. A.F.F. AND B.F.F. SHALL BE BASED ON F.F. ELEV. 946.50.

- SPECIFIC NOTES:
- 1 PROVIDED BY US FILTER-MEMCOR
INSTALLED BY GENERAL CONTRACTOR.
- 2 EQUIPMENT PAD, SEE DETAIL 4 ON SHEET P-23
- 3 8" BUTTERFLY VALVE
- 4 8" CHECK VALVE
- 5 8"x10" REDUCING ELBOW
- 6 10"x10"x8" TEE
- 7 6" PNEUMATIC BUTTERFLY VALVE
- 8 6" BUTTERFLY VALVE
- 9 6" VENT
- 10 24" MANWAY
- 11 LADDER AND SAFETY CAGE
- 12 HOLD DOWN LUGS, 4 LUGS PER TANK @ 90°
- 13 10" BUTTERFLY VALVE
- 14 4" BACKWASH AIR, SEE SHEET P-10
FOR CONTINUATION.
- 16 FLOOR PENETRATION, SEE DETAIL 8
ON SHEET P-22.
- 17 14" X 10" ECCENTRIC REDUCER



SECTION
SCALE 1/2" = 1'-0"

G
P-10



SECTION
SCALE: 1/2" = 1'-0"

H
P-10

RECORD DRAWING
This record drawing has been prepared, in part,
based upon information furnished by others.
While this information is believed to be reliable,
HDR Engineering, Inc. cannot assure its
accuracy, and thus is not responsible for the
accuracy of this record drawing or for any
errors or omissions which may have been in-
corporated into it as a result. Those relying on
this record document are advised to obtain
independent verification of its accuracy before
applying it for any purpose.

REV.	DATE	BY	APP	DESCRIPTION
1	9/13/2001			REVISED AS PER ADDENDUM DATED (9/13/2001)
0	8/27/2001			ISSUED FOR CONSTRUCTION

RECORD DRAWING
APRIL 28, 2003

Wiley & Wilson
ARCHITECTS ENGINEERS PLANNERS
An Employee-Owned Company
2310 LANGHORNE ROAD
LYNCHBURG, VIRGINIA
24501
(804) 947-1901

P.O. BOX 877
LYNCHBURG, VIRGINIA
24505-0877

IN ASSOCIATION WITH
HDR
HDR Engineering, Inc.

DESIGNED	DRAWN	PROJECT
ADE	JMB	CRYSTAL SPRING WATER TREATMENT PLANT FOR THE CITY OF ROANOKE, VIRGINIA
CHECKED	COMM. NO.	REFERENCE
PJD		
CADD NO.	TITLE	
	BACKWASH FORWARDING SYSTEM SECTIONS	
DATE	DWG. NO.	SHEET NO.
AUGUST 27, 2001	P-15	1