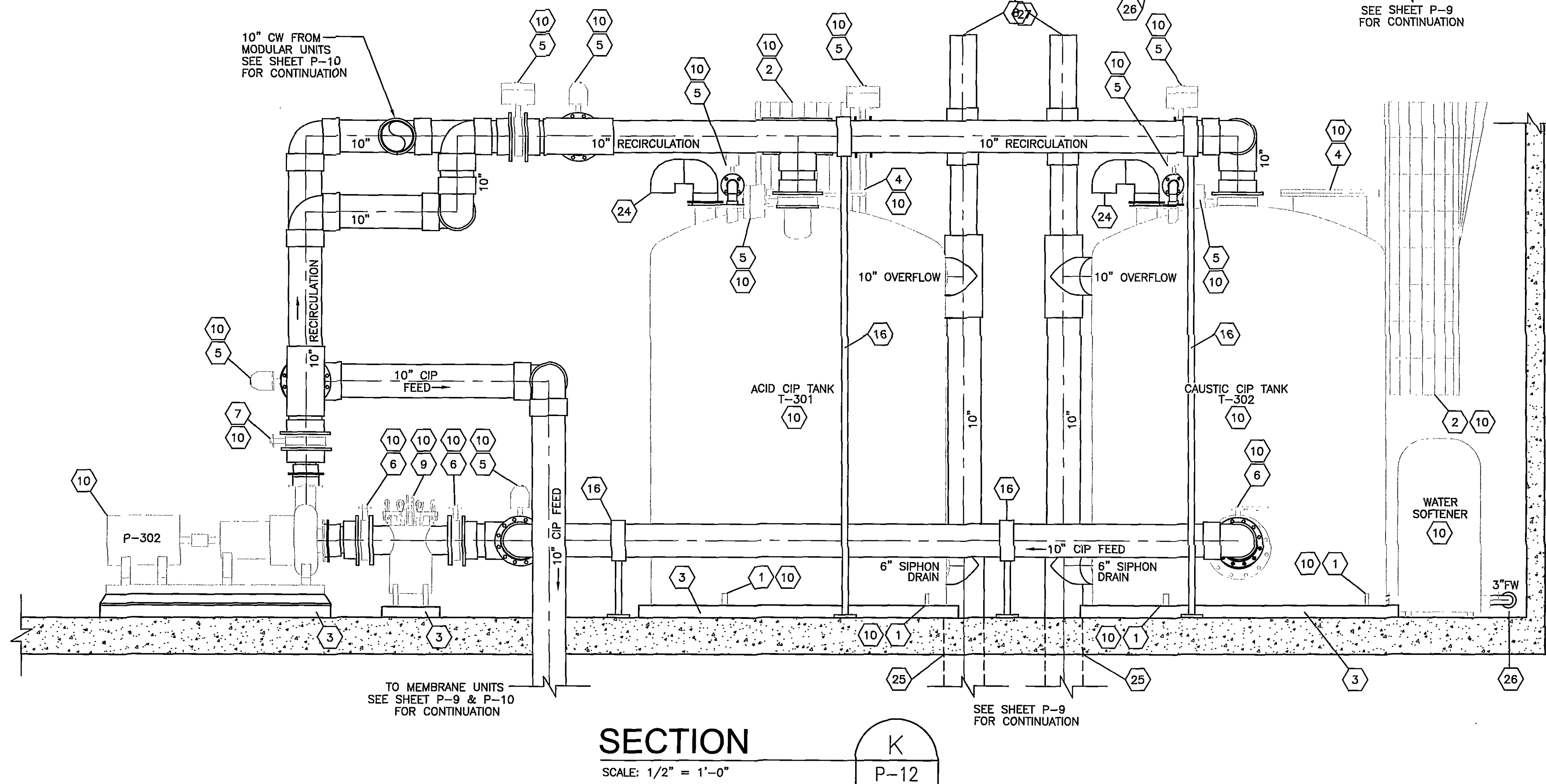
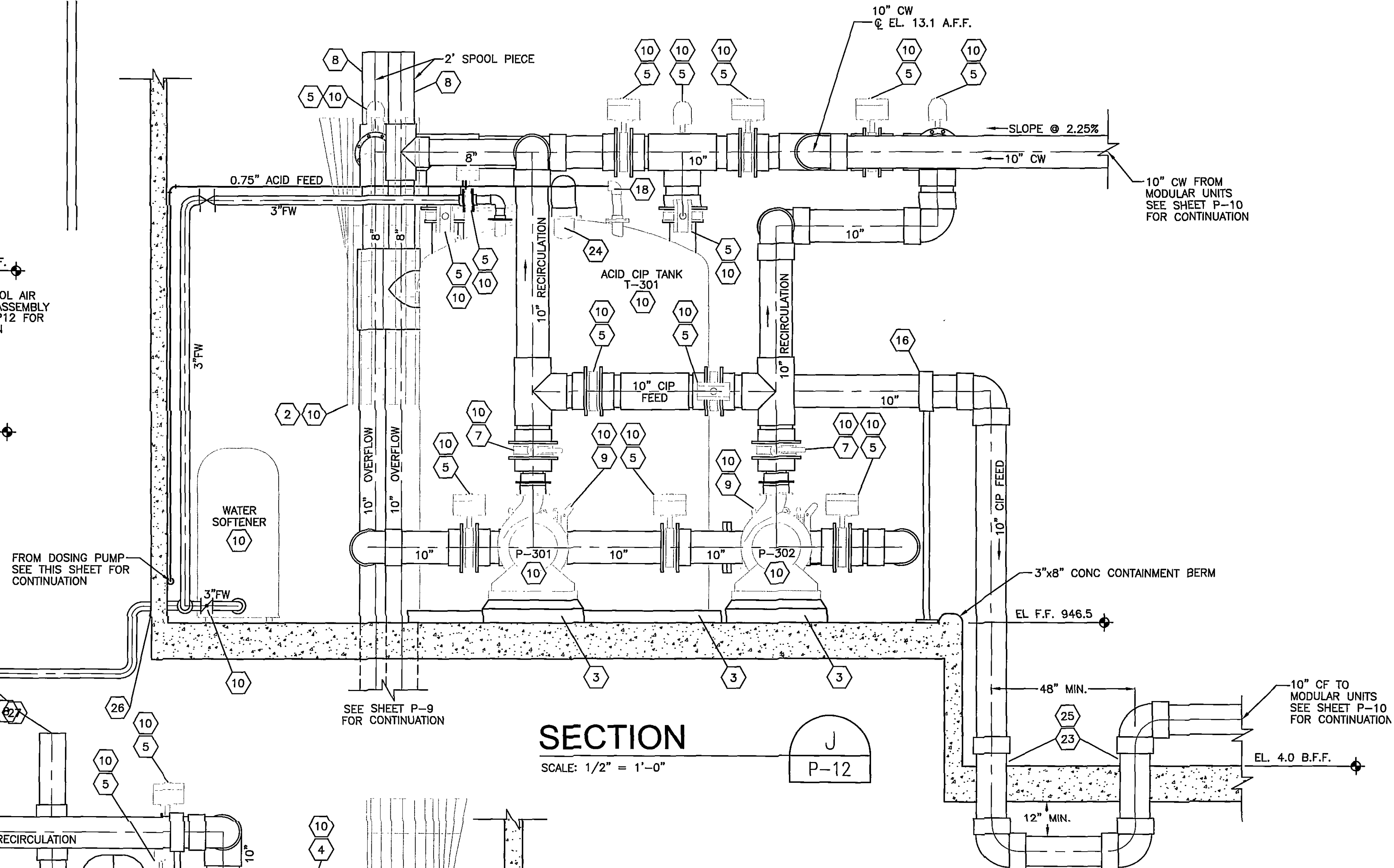
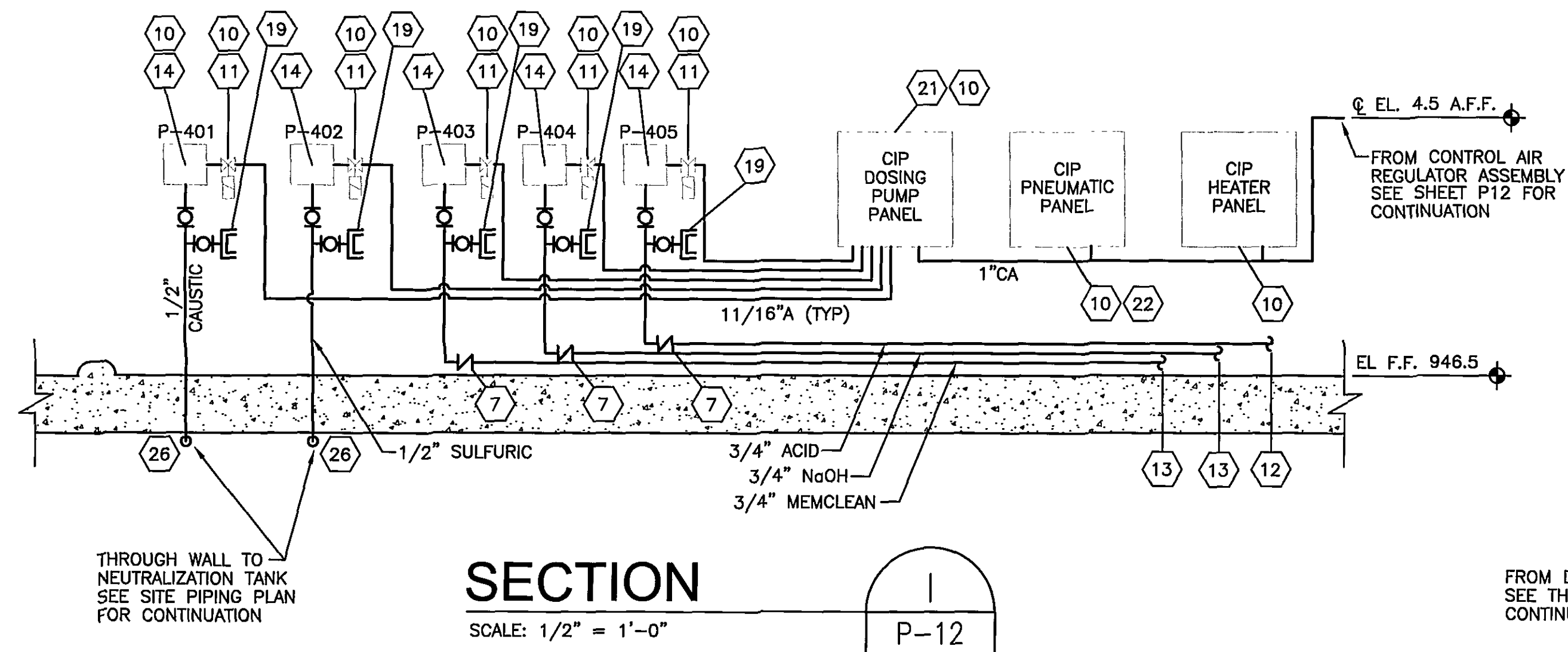


RECORD DRAWING
This record drawing has been prepared, in part, based upon information furnished by others. While this information is believed to be reliable, HDR Engineering, Inc. cannot assure its accuracy, and thus is not responsible for the accuracy of this record drawing or for any errors or omissions which may have been incorporated into it as a result. Those relying on this record document are advised to obtain independent verification of its accuracy before applying it for any purpose.



GENERAL NOTES:

- GRAY-SCALE EQUIPMENT PROVIDED BY US FILTER-MEMCOR INSTALLED BY THE GENERAL CONTRACTOR.
- COORDINATE EQUIPMENT DELIVERY WITH US FILTER-MEMCOR AND CITY ENGINEER.
- F.F. ELEV. 946.50 IS TOP OF FLOOR ELEV AT WALL. ACTUAL FLOOR ELEV. WILL VARY WITH SLOPE TO DRAIN. ALL ELEV. A.F.F. AND B.F.F. SHALL BE BASED ON F.F. ELEV. 946.50.
- OWNER WILL PROVIDE CHEMICALS FOR FULL SCALE OPERATIONS. CONTRACTOR RESPONSIBLE FOR ALL CHEMICALS DURING START UP AND TESTING.

SPECIFIC NOTES:

- HOLD DOWN LUGS, 4 LUGS PER TANK @ 90°.
- LADDER AND SAFETY CAGE.
- CONCRETE EQUIPMENT PAD.
- 24" FLANGED MANWAY.
- CYLINDER ACTUATED BUTTERFLY VALVE
- MANUAL BUTTERFLY / WAFER VALVE
- CHECK VALVE
- 8" SPOOL PIECE VENT.
- STRAINER
- PROVIDED BY US FILTER-MEMCOR, INSTALLED BY GENERAL CONTRACTOR
- SOLENOID ACTUATED GATE VALVE
- TO TANK T-301
- TO TANK T-302
- DOSING PUMP SET ON STAND PROVIDED BY US FILTER-MEMCOR
- REDUCER
- PIPE SUPPORT, SEE DETAIL 6 ON SHEET P-23.
- TO WASTE NEUTRALIZATION TANK SEE SITE PIPING PLAN.
- CIP CHEMICAL FEED FITTING
- 3/4" FLUSHING CONNECTION
- PROVIDED BY US FILTER-MEMCOR, INSTALLED BY GENERAL CONTRACTOR.
- ROUTE AND SECURE DOSING PUMP AIR TUBING TO WALL
- ROUTE AND SECURE CONTROL AIR TUBING TO VALVES ALONG FLOOR, PIPES AND/OR TRENCH
- PROVIDE SPOOL PIECE EXTENDING 6" ABOVE BOTTOM OF TRENCH
- 6" VENT
- FLOOR PENETRATION, SEE DETAIL 8 SHEET P-22
- WALL PENETRATION SEE DETAIL 7 SHEET P-22.
- 3" FW FROM BOOSTER PUMP (P-701). SEE SITE PIPING PLAN FOR CONTINUATION. MINIMUM 3' OF COVER.

RECORD DRAWING
APRIL 28, 2003

Wiley & Wilson
ARCHITECTS ENGINEERS PLANNERS
An Employee Owned Company

2310 LANGHORNE ROAD
LYNCHBURG, VIRGINIA 24501
(804) 947-1901

P.O. BOX 877
LYNCHBURG, VIRGINIA 24505-0877

IN ASSOCIATION WITH
HDR
HDR Engineering, Inc.

DESIGNED ADE	DRAWN JMB	PROJECT CRYSTAL SPRING WATER TREATMENT PLANT FOR THE CITY OF ROANOKE, VIRGINIA
CHECKED PJD		REFERENCE
COMM. NO.		TITLE CIP DELIVERY SYSTEM SECTIONS
CADD NO.		DWG. NO. P-16
DATE AUGUST 27, 2001		SHEET NO. REV.

1	9/13/2001			REVISED AS PER ADDENDUM DATED (9/13/2001)
0	8/27/2001			ISSUED FOR CONSTRUCTION
REV.	DATE	BY	APP.	DESCRIPTION