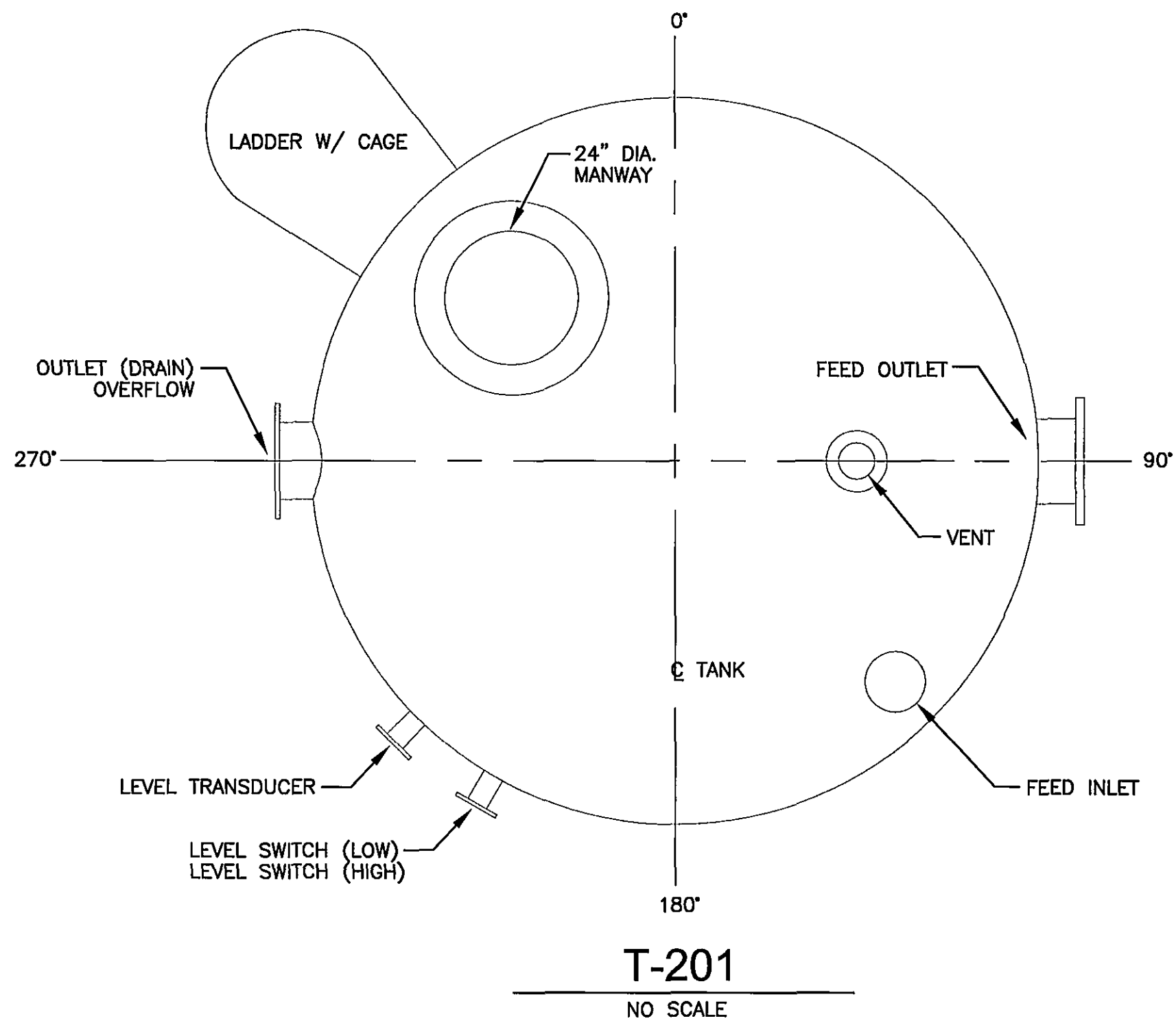
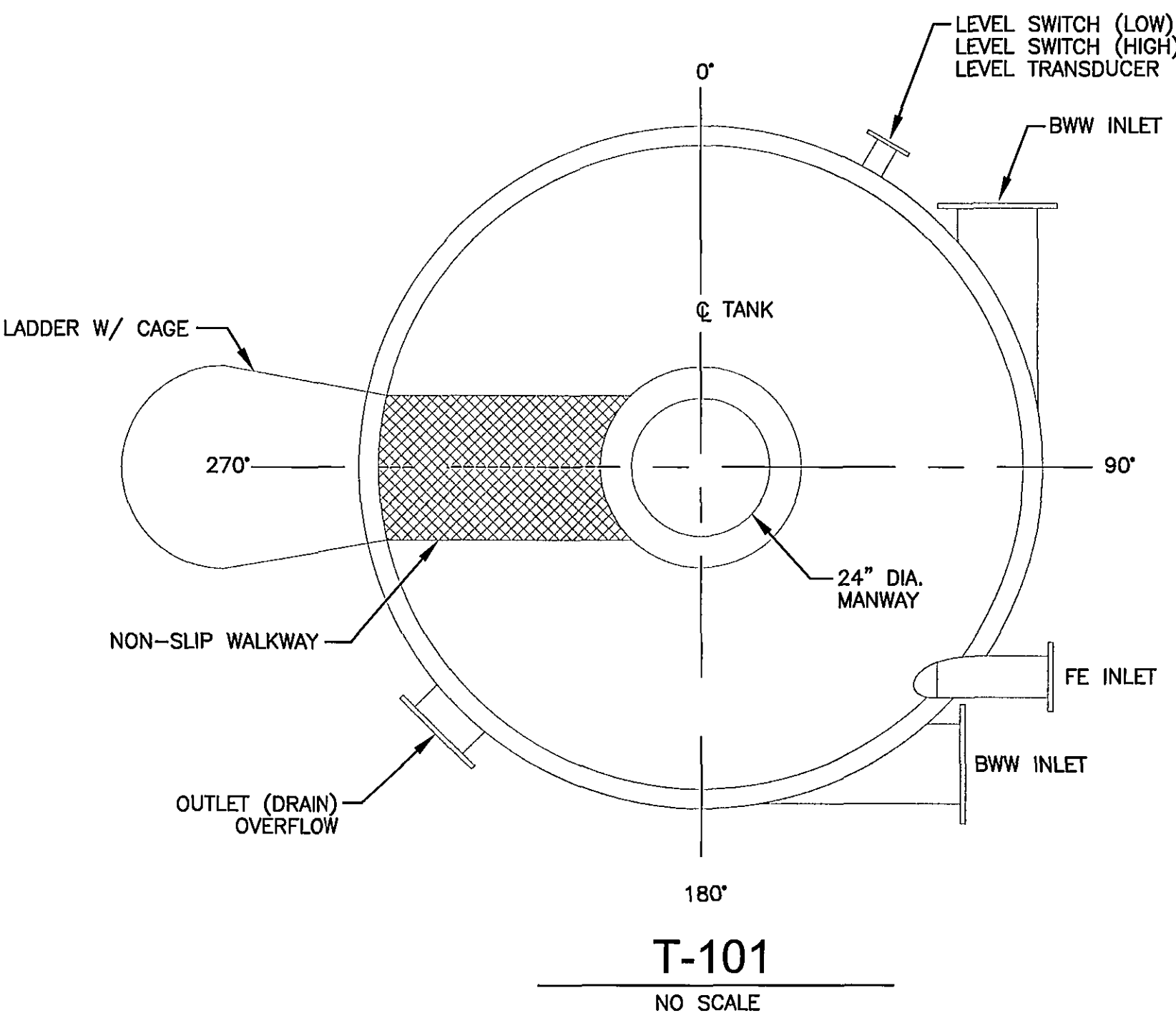
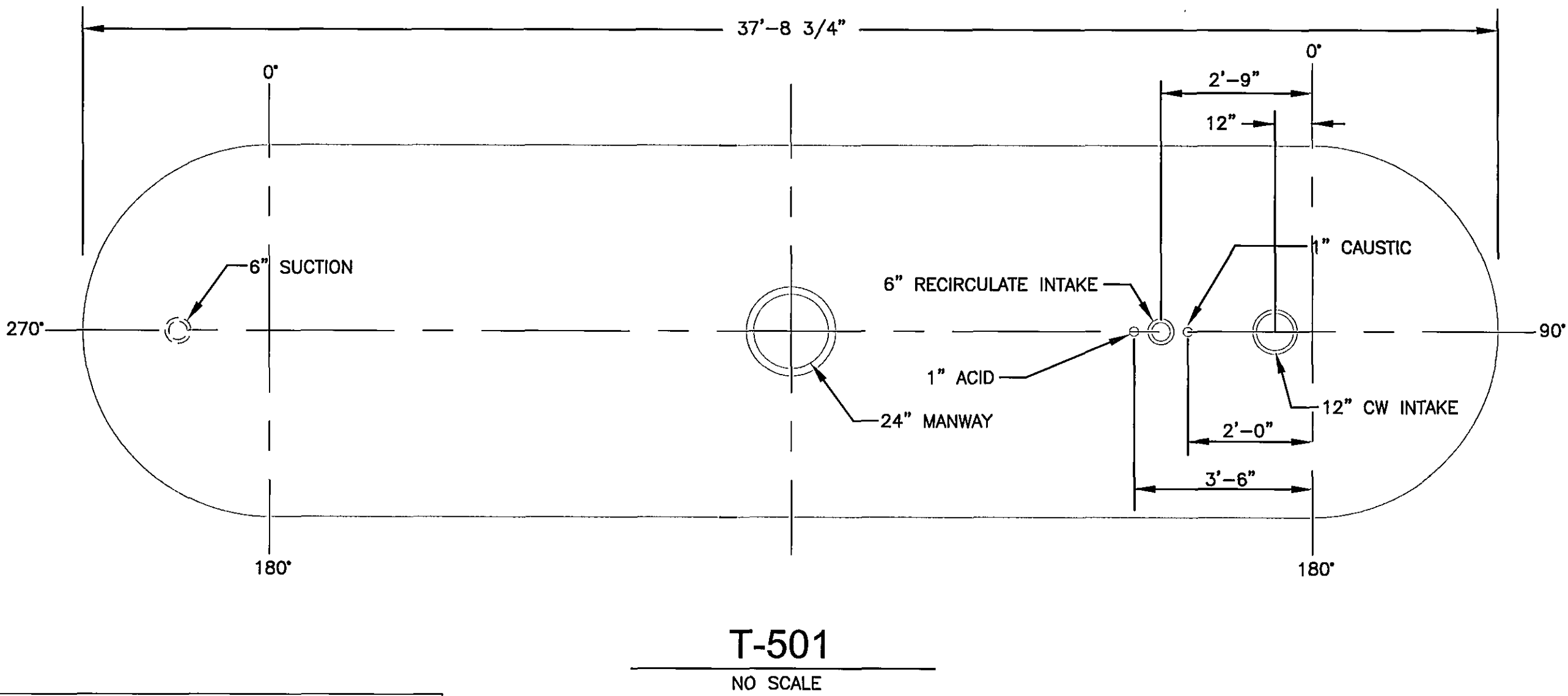
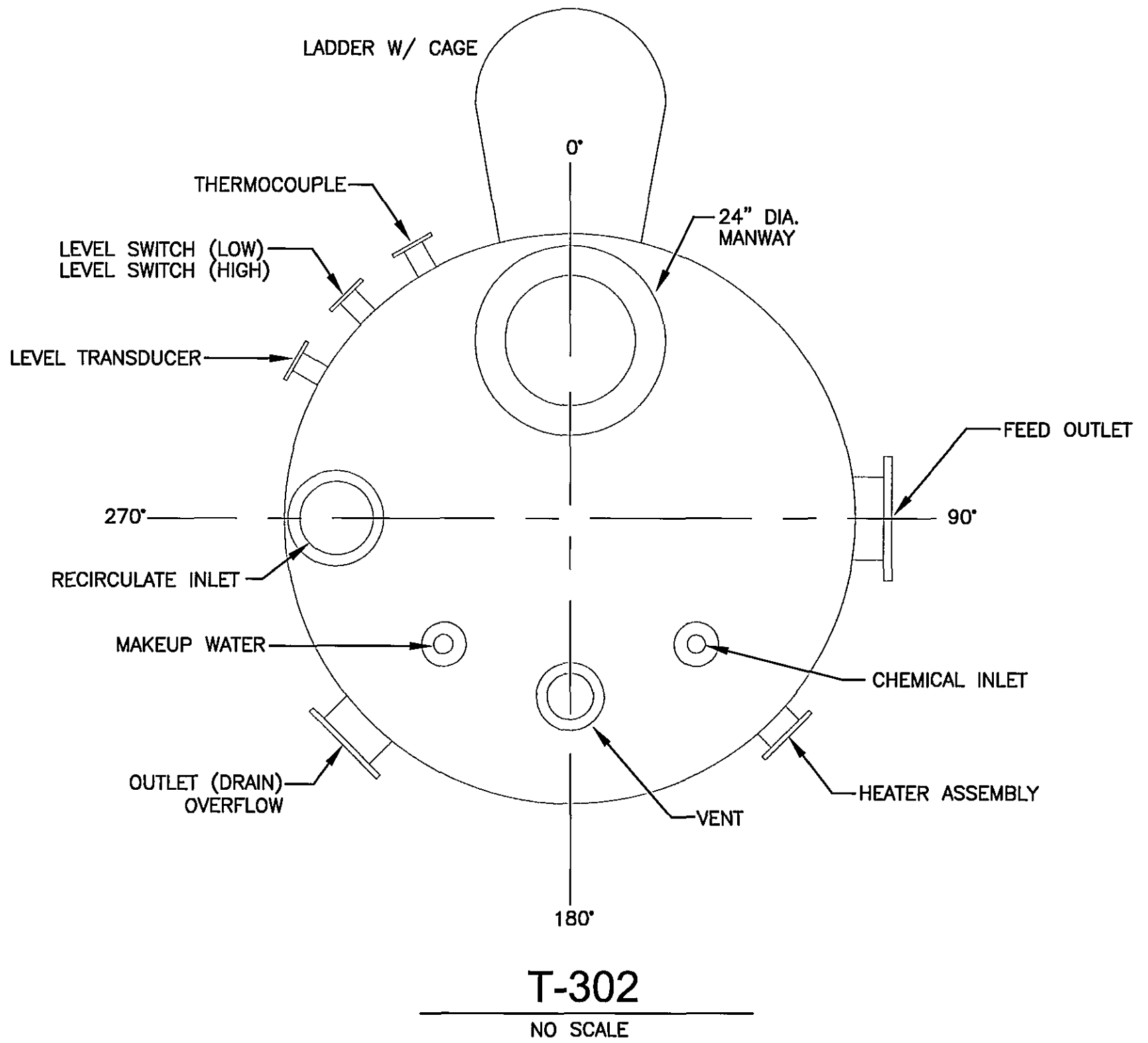
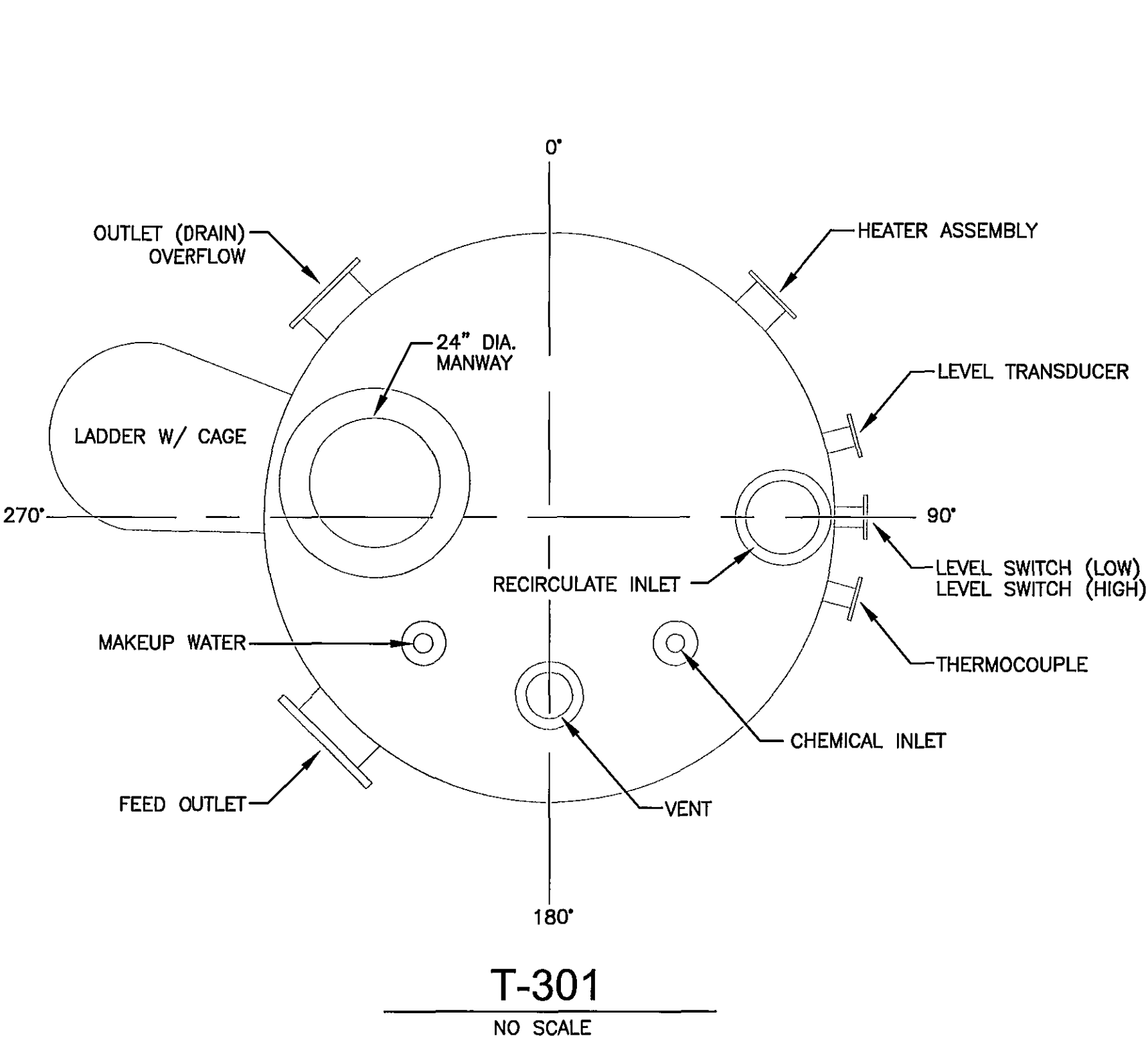


TANK NO.	PROCESS TANK SCHEDULE									
	SIDE CONNECTIONS					TOP CONNECTIONS				
	DESCRIPTION	SIZE	ORIEN.	Q. HEIGHT	REMARKS:	DESCRIPTION	SIZE	ORIENT.	DIST. FROM CTR.	REMARKS:
T-101 DIA. 9'-0" (I.D.) HT 12'-6" (NOM.) BACKWASH RECEIVING TANK (4,000 GAL)	INLET (BW 1)	12"	N/A	8'-6"		MANWAY	24"	CENTER	-	W/ COVER
	INLET (BW 2)	12"	N/A	8'-6"		LADDER	-	270°	-	
	INLET (FE)	6"	N/A	10'-10.5"						
	OUTLET DRAIN	8"	225°	11"						
	OVERFLOW	10"	225°	9'-8"						
	LEVEL SWITCH (LOW)	3"	30°	2'-8"						
	LEVEL SWITCH (HIGH)	3"	30°	4'-6"						
T-201 DIA. 10'-0" (I.D.) HT 13'-3" (NOM.) BACKWASH FORWARDING TANK (6,200 GAL)	LEVEL TRANSDUCER	3"	30°	5"						
	OVERFLOW	10"	270°	11'-0"		FEED INLET	6"	135°	4'-3.5"	
	LEVEL SWITCH (LOW)	3"	210°	2'-8"		VENT	6"	90°	2'-6"	
	FEED OUTLET	14"	90°	1'-5.5"		MANWAY	24"	315°	3'-6"	
	LEVEL SWITCH (HIGH)	3"	210°	9'-2"		LADDER	-	315°	-	
	LEVEL TRANSDUCER	3"	225°	2'-8"						
	DRAIN	6"	270°	1'-1"						
T-301 DIA. 8'-0" (I.D.) HT 11'-2" (NOM.) CIP TANK ACID (4,400 GAL)	OVERFLOW	10"	315°	8'-11"		RECIRCULATE INLET	10"	90°	3'-3.4"	
	THERMOCOUPLE	3"	105°	1'-8"		CHEMICAL INLET	3"	135°	2'-6"	
	FEED OUTLET	14"	225°	1'-7"		MANWAY	24"	281°	2'-6"	W/ COVER
	HEATER ASSEMBLY	6"	45°	1'-8"		VENT	6"	180°	2'-6"	
	LEVEL TRANSDUCER	3"	75°	5"		MAKEUP WATER	3"	225°	2'-6"	
	DRAIN	6"	315°	1'-1"		LADDER	-	281°	-	
	LEVEL SWITCH (HIGH)	3"	90°	8'-5"						
T-302 DIA. 8'-0" (I.D.) HT 11'-2" (NOM.) CIP TANK CAUSTIC (4,400 GAL)	LEVEL SWITCH (LOW)	3"	90°	2'-8"		RECIRCULATE INLET	10"	270°	3'-3.4"	
	OVERFLOW	10"	225°	8'-11"		CHEMICAL INLET	3"	135°	2'-6"	
	THERMOCOUPLE	3"	330°	1'-8"		MANWAY	24"	0°	2'-6"	W/ COVER
	FEED OUTLET	14"	90°	1'-7"		VENT	6"	180°	2'-6"	
	HEATER ASSEMBLY	6"	135°	1'-8"		MAKEUP WATER	3"	225°	2'-6"	
	LEVEL TRANSDUCER	3"	300°	5"		LADDER	-	0°	-	
	DRAIN	6"	225°	1'-1"						
T-501 DIA. 10'-0" LENGTH 37'-8 3/4" NEUTRALIZATION TANK (20,000 GAL)	LEVEL SWITCH (HIGH)	3"	315°	8'-5"		CW INTAKE	12"	CENTER	TOP	
	LEVEL SWITCH (LOW)	3"	315°	2'-8"		RECIRCULATE	6"	CENTER	TOP	
	OVERFLOW	10"	270°	0'-6"		MANWAY	24"	CENTER	TOP	W/ COVER
	THERMOCOUPLE	3"	330°	1'-8"		ACID FEED	1"	CENTER	TOP	
	FEED OUTLET	14"	90°	1'-7"		CAUSTIC FEED	1"	CENTER	TOP	
	HEATER ASSEMBLY	6"	135°	1'-8"						
	LEVEL TRANSDUCER	3"	300°	5"						



RECORD DRAWING
This record drawing has been prepared, in part, based upon information furnished by others. While this information is believed to be reliable, HDR Engineering, Inc. cannot assure its accuracy, and thus is not responsible for the accuracy of this record drawing or for any errors or omissions which may have been incorporated into it as a result. Those relying on this record document are advised to obtain independent verification of its accuracy before applying it for any purpose.

NOTES:

1. ALL TANKS PROVIDED BY US FILTER/MEMCOR AND INSTALLED BY GENERAL CONTRACTOR.
2. SEE TANK SCHEDULE FOR LOCATION OF CONNECTIONS AND APPURTENANCES.

RECORD DRAWING
APRIL 28, 2003

Wiley & Wilson
ARCHITECTS ENGINEERS PLANNERS
An Employee-Owned Company

2310 LANGHORNE ROAD
LYNCHBURG, VIRGINIA 24501
(804) 947-1901

P.O. BOX 877
LYNCHBURG, VIRGINIA 24505-0877

IN ASSOCIATION WITH
HDR
HDR Engineering, Inc.

DESIGNED ADE	DRAWN JMB	PROJECT CRYSTAL SPRING WATER TREATMENT PLANT FOR THE CITY OF ROANOKE, VIRGINIA
CHECKED PJD		REFERENCE PROCESS
COMM. NO.		TITLE TANK SCHEDULE
CADD NO.		DWG. NO. P-20
DATE AUGUST 27, 2001		SHEET NO. REV.