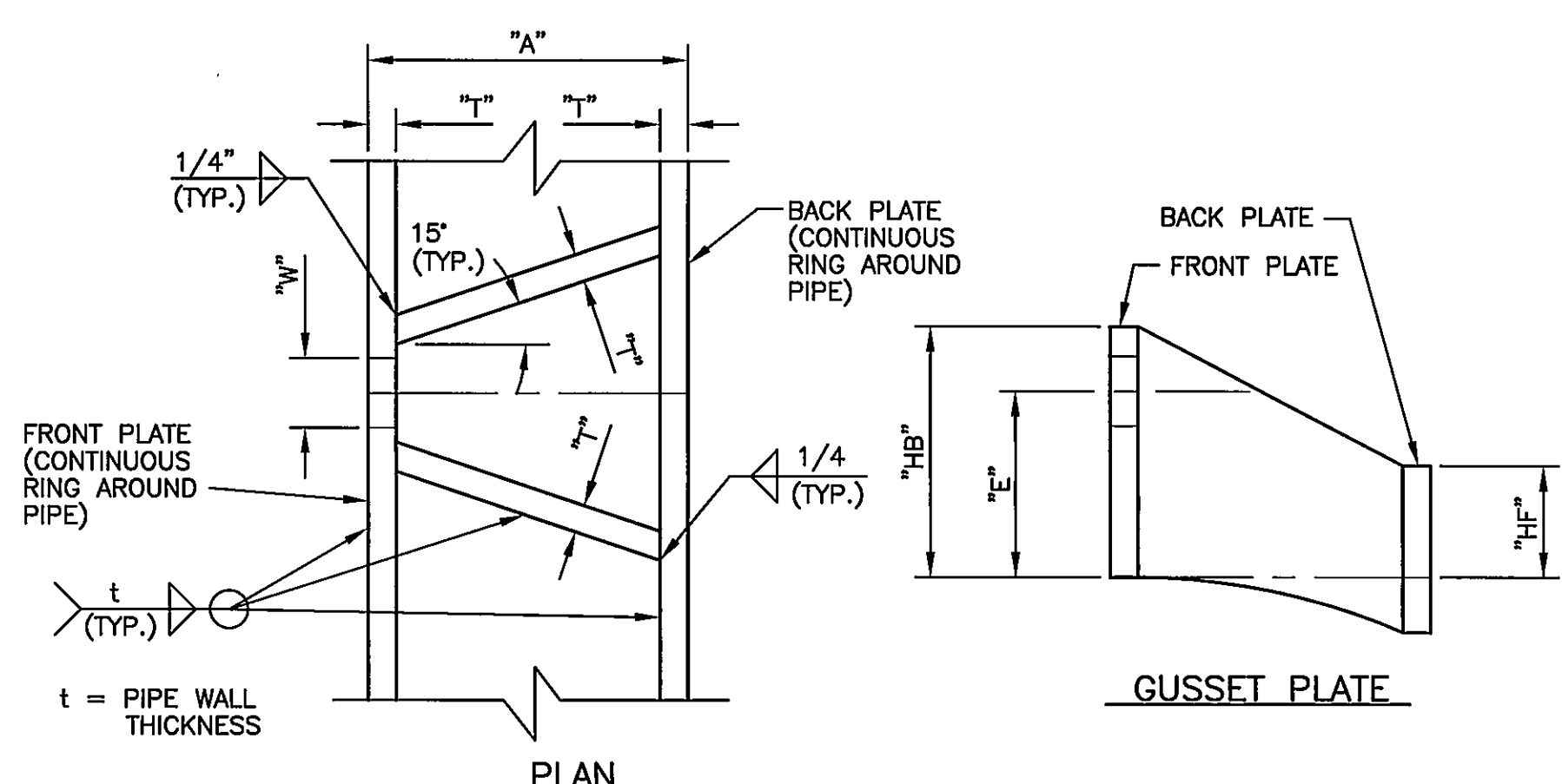


SAMPLE TAP DETAIL
NO SCALE

1
P-22

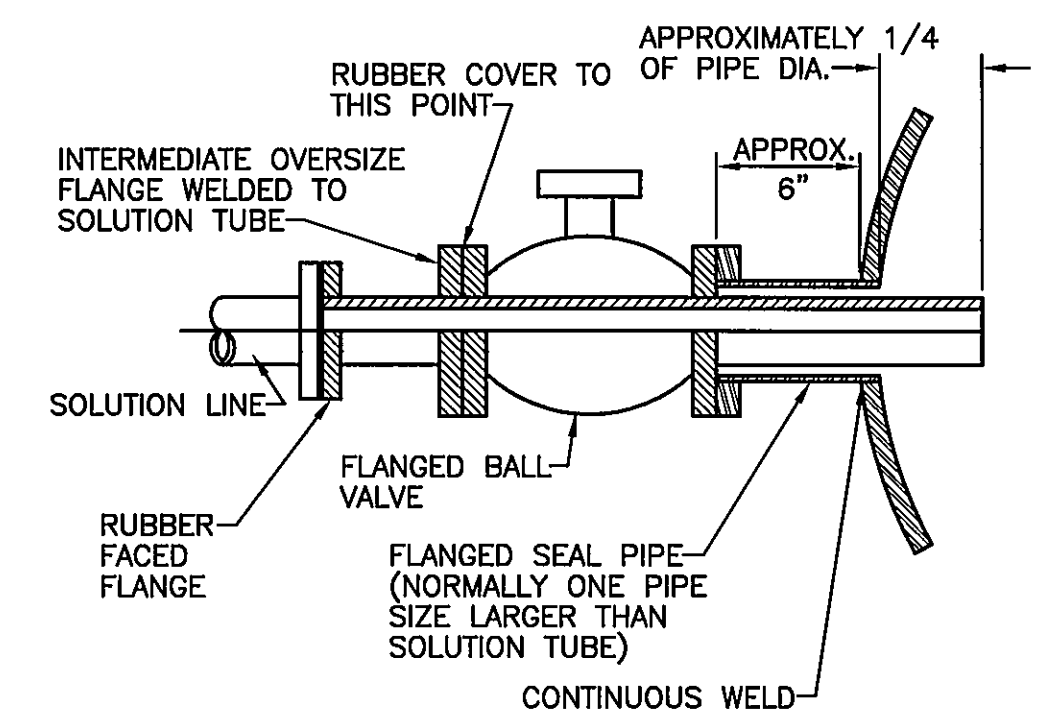


LUG DIMENSIONS FOR HARNESS OVER COUPLING

PIPE DIA.	STUD DIA.	NO. BOLTS	A	W	T	HB	E	HOLE DIA.	L	B	HF	DESIGN PRESSURE
6"	5/8"	2	5"	1 3/8"	3/8"	3 7/8"	3"	3/4"	24"	11 7/8"	2"	150 psi
8"	5/8"	2	5"	1 3/8"	3/8"	3 7/8"	3"	3/4"	24"	11 7/8"	2"	150 psi
12"	3/4"	2	5"	1 1/2"	3/8"	4 1/8"	3 1/8"	7/8"	24"	11 7/8"	2"	150 psi
14"	3/4"	2	5"	1 1/2"	3/8"	4 1/8"	3 1/8"	7/8"	24"	11 7/8"	2"	150 psi
18"	1"	2	5 3/4"	1 3/4"	1/2"	4 1/2"	3 1/4"	1 1/8"	24"	11 7/8"	2"	150 psi
24"	7/8"	4	5 1/2"	1 5/8"	1/2"	4 1/4"	3 1/8"	1"	36"	17 7/8"	2"	150 psi
30"	1 1/8"	4	7"	1 7/8"	1/2"	4 3/4"	3 5/8"	1 1/4"	36"	17 7/8"	1 1/4"	150 psi

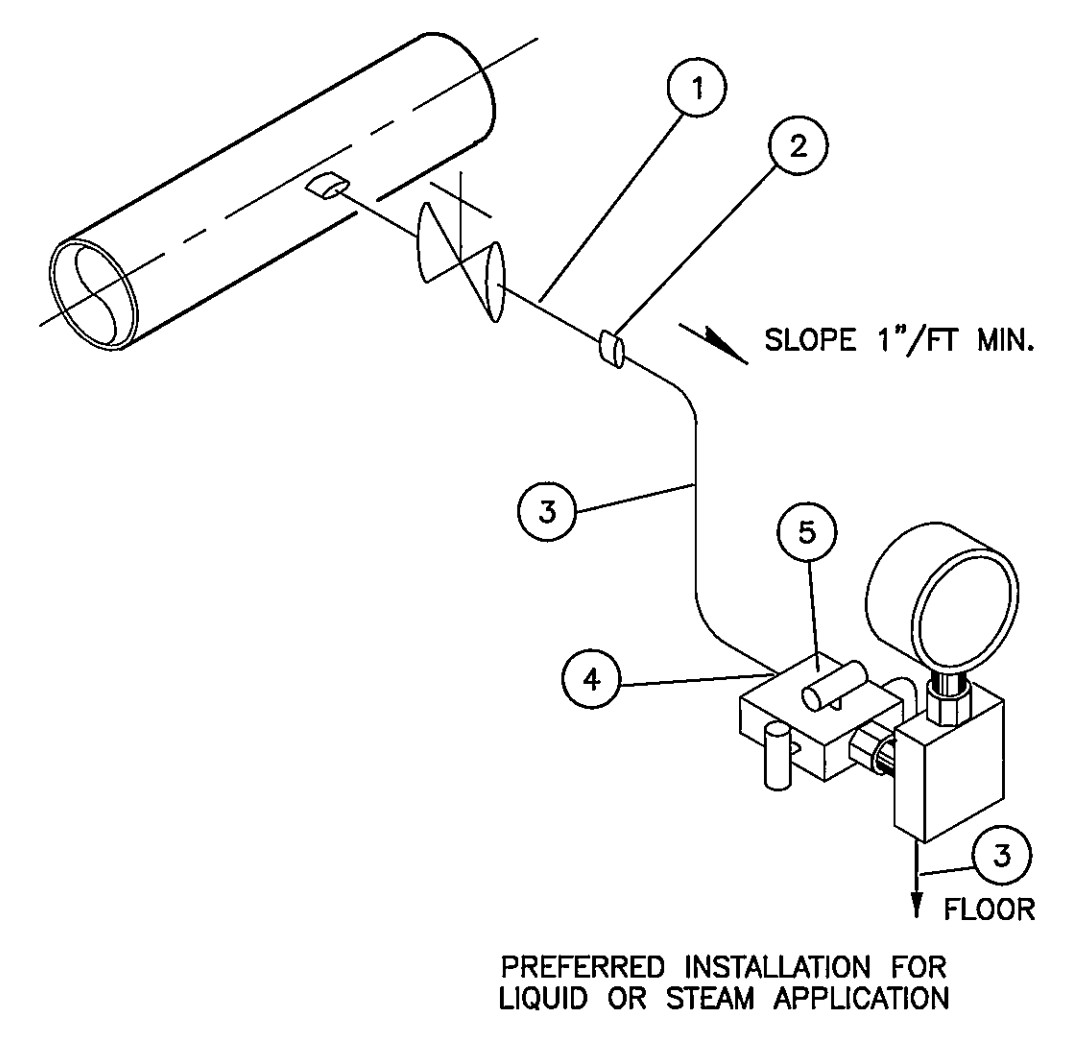
DETAIL
NO SCALE

4
P-22



DETAIL
NO SCALE

2
P-22



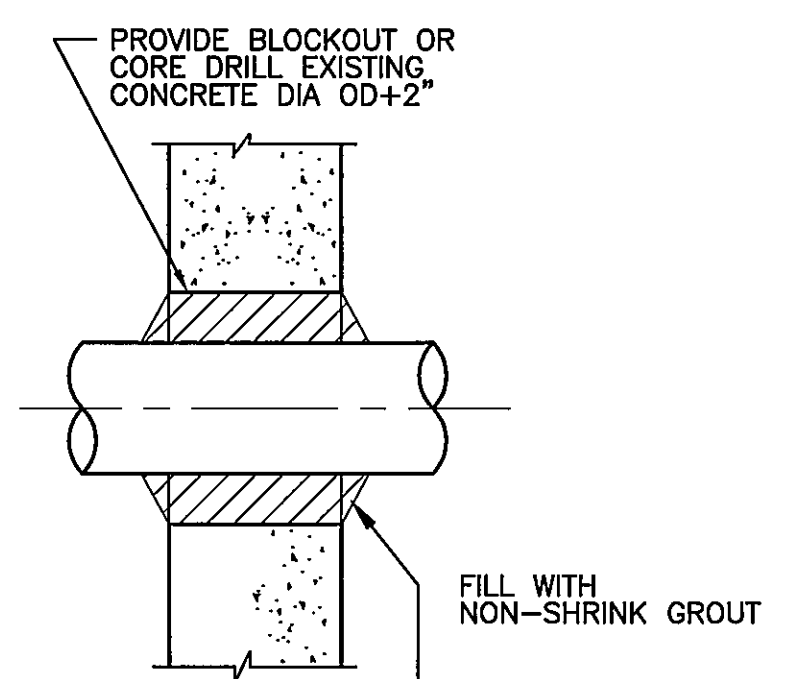
PRESSURE TRANSMITTER INSTALLATION DETAIL

NTS (13442-21)

6
P-22

BILL OF MATERIALS PER INSTALLATION		
ITEM #	QTY.	DESCRIPTION
1	1	3/4" X 6" LONG PIPE NIPPLE SCH. 80 THREADED ONE END, (MATERIAL PER LINE SCHEDULE)
2	1	3/4" FEMALE NPT X 1/2" TUBE 316 SS CONNECTOR
3	AS REQ'D	1/2" O.D. X 0.49" WALL SEAMLESS FULLY ANNEALED 316 SS TUBING PER ASTM A269
4	AS REQ'D	1/2" TUBE X 1/2" MALE NPT 316 SS CONNECTOR
5	1	2 VALVE MANIFOLD

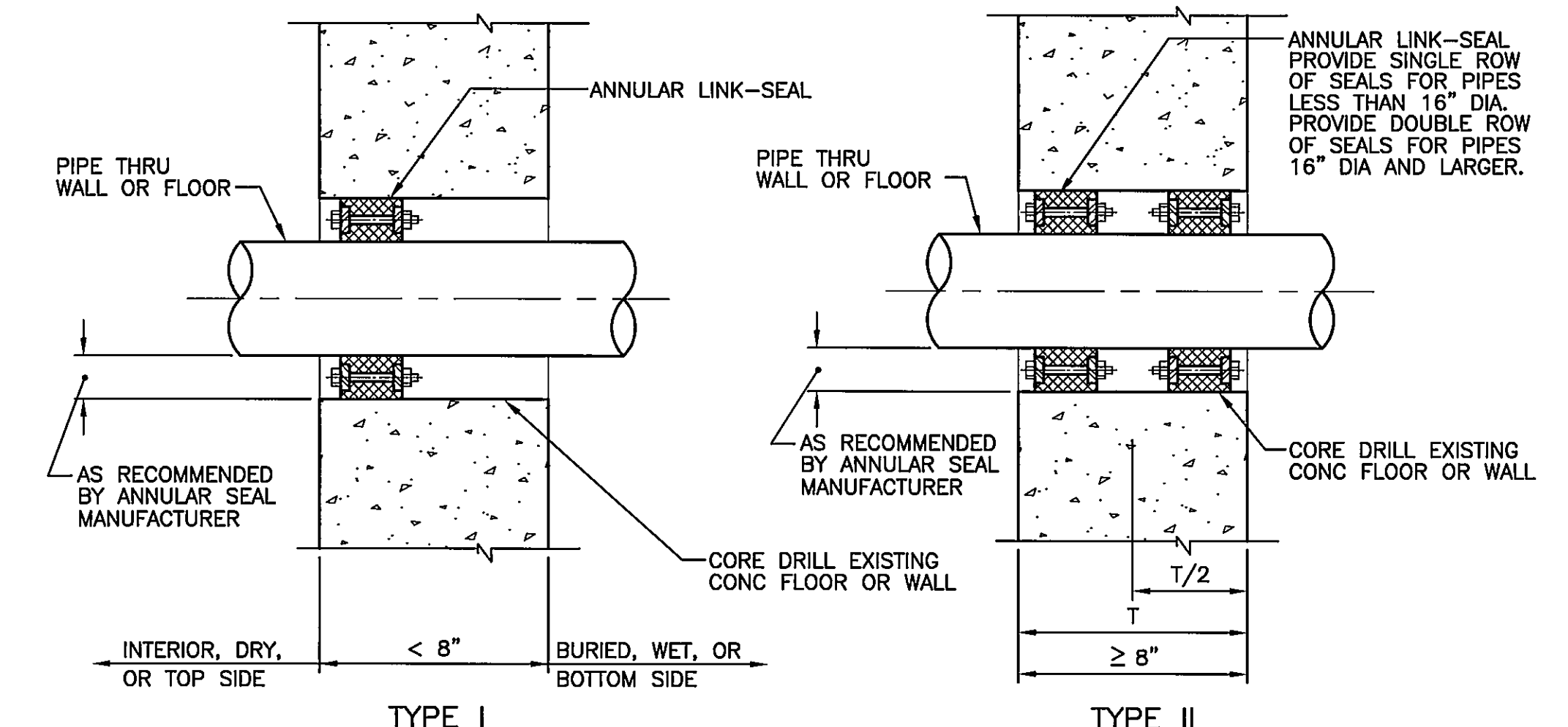
NOTES:
1. WELD FITTINGS & FILL PIGTAIL W/CONDENSATE
BEFORE INSTALLING GAUGE.



PIPE PENETRATION

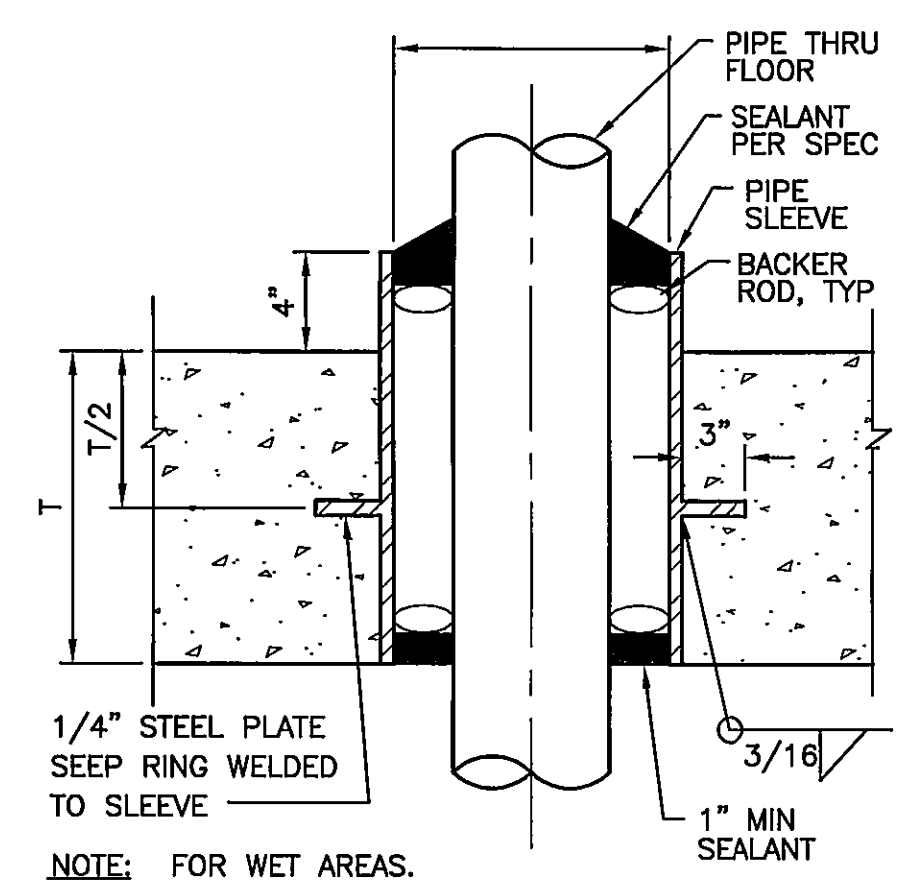
DETAIL

7
P-22



PIPE PENETRATION WITH ANNULAR SEAL DETAIL

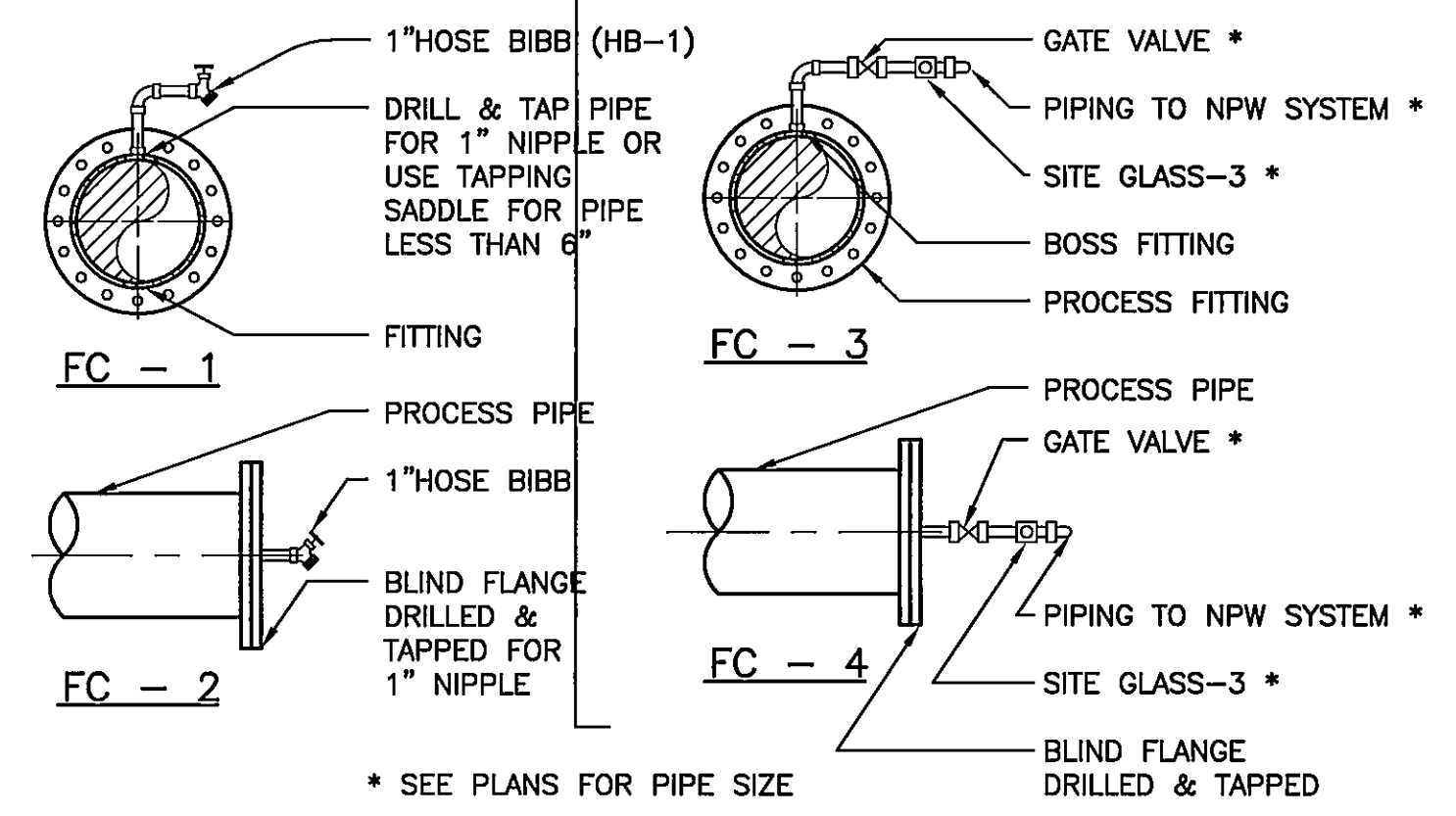
3
P-22



FLOOR PENETRATION

DETAIL

8



FLUSHING CONNECTIONS

DETAIL

9
P-22

RECORD DRAWING
This record drawing has been prepared, in part, based upon information furnished by others. While this information is believed to be reliable, HDR Engineering, Inc. cannot assure its accuracy, and thus is not responsible for the accuracy of this record drawing or for any errors or omissions which may have been incorporated into it as a result. Those relying on this record document are advised to obtain independent verification of its accuracy before applying it for any purpose.

REV.	DATE	BY	APP.	DESCRIPTION
1	9/13/2001			REVISED AS PER ADDENDUM DATED (9/13/2001)
0	8/27/2001			ISSUED FOR CONSTRUCTION

RECORD DRAWING
APRIL 28, 2003

Wiley & Wilson
ARCHITECTS ENGINEERS PLANNERS
An Employee-Owned Company
2310 LANGHORNE ROAD
LYNCHBURG, VIRGINIA 24501
(804) 947-1901
P.O. BOX 877
LYNCHBURG, VIRGINIA 24505-0877

IN ASSOCIATION WITH
HDR
HDR Engineering, Inc.

DESIGNED	DRAWN	PROJECT
ADE	JMB	CRYSTAL SPRING WATER TREATMENT PLANT FOR THE CITY OF ROANOKE, VIRGINIA
CHECKED	COMM. NO.	REFERENCE
PJD		
CADD NO.	DWG. NO.	TITLE
	P-22	PROCESS DETAILS
DATE	SHEET NO.	REV.
AUGUST 27, 2001		