

All residences within the Zone 2 area have septic systems except for areas served by a community drainfield. Each residence with a private well would also have a on-site septic system. Within each subdivisions, each house typically has a on-site septic system within their lot or on a nearby common area lot.

There is 1 septic system within Zone 1 and approximately 325 within Zone 2.

●

Contentment Island Wells

□

Zone 1 - 1000-ft

□

Zone 2 - 1-mile

⏏

Pelican Point Yacht Club, Inc

▨

Community Drainfields (Locations Approximate)

●

Other Community Wells

●

Private wells/Onsite Septic Systems (Locations Approximate)

—

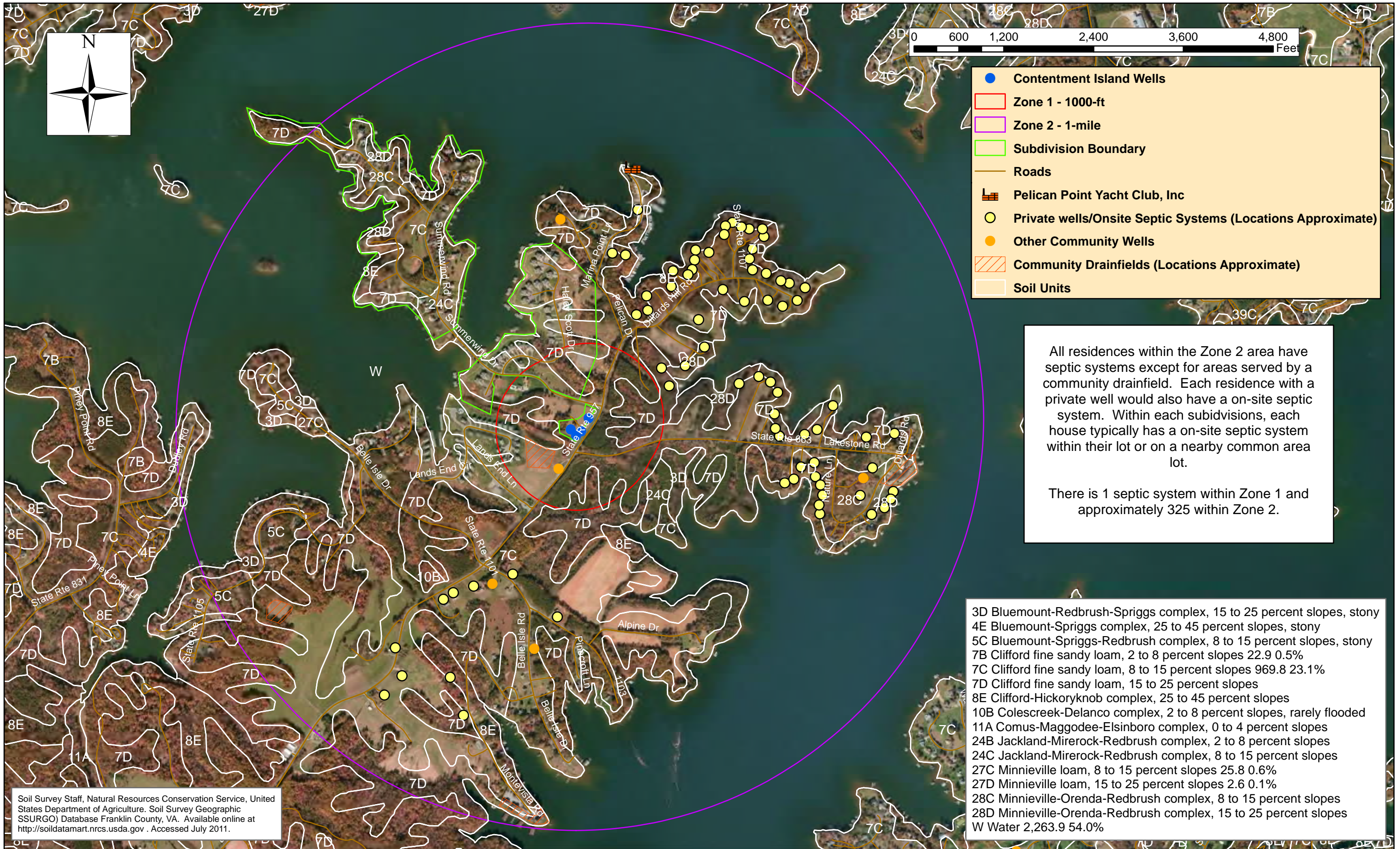
Roads

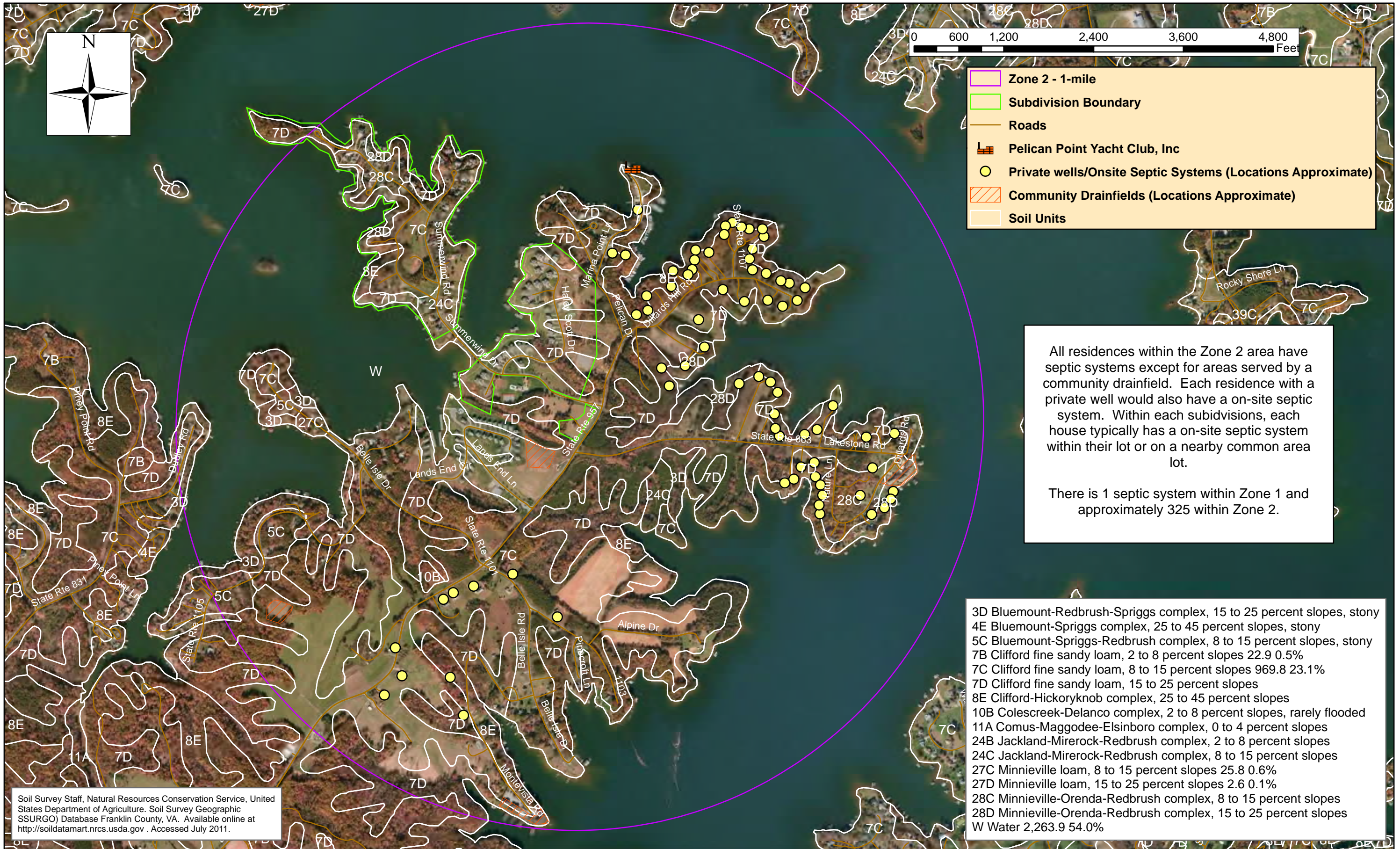
□

Subdivision Boundary

Legend

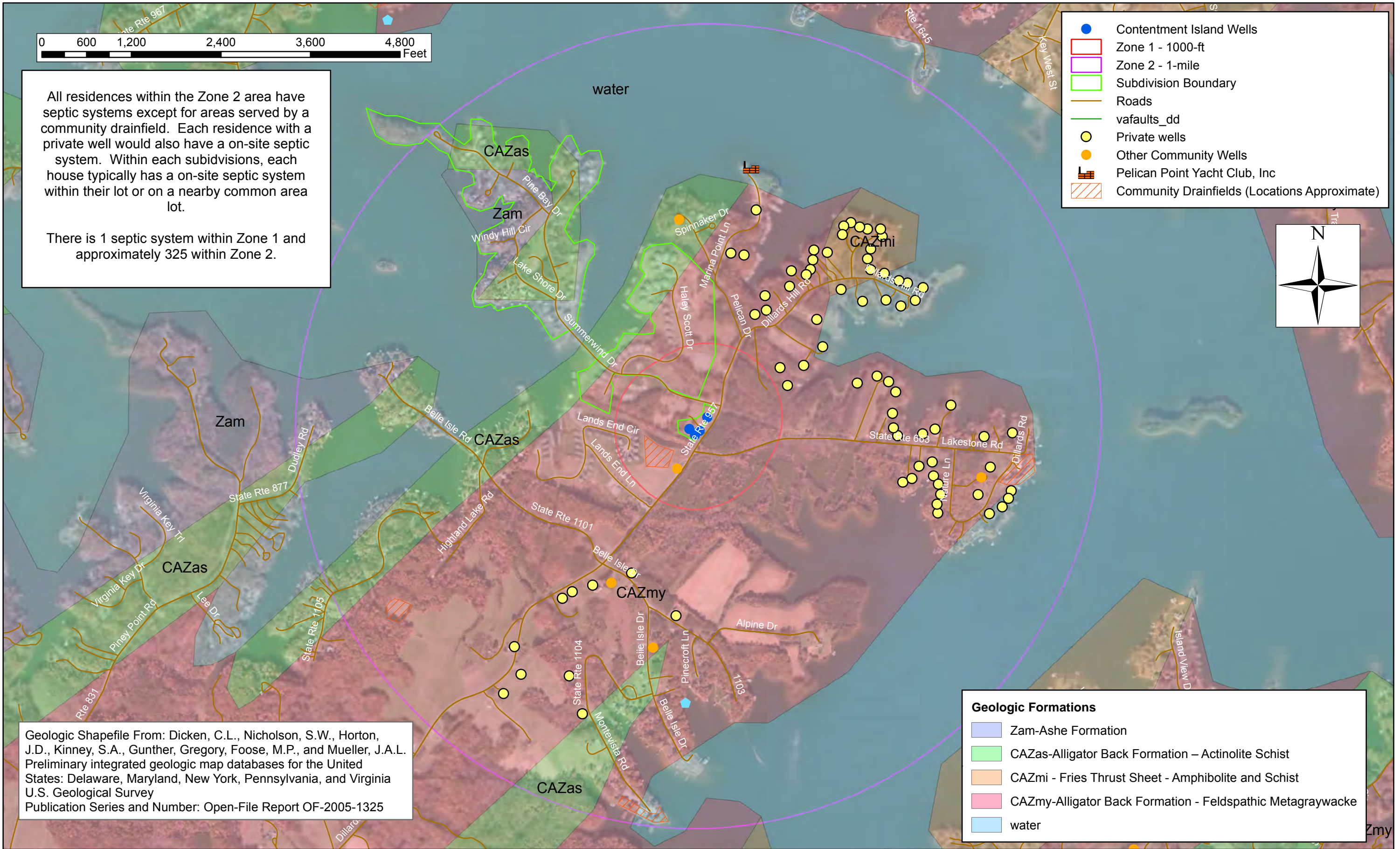
Data from VDH Database
 Bing Maps Aerial (c) 2010 Microsoft Corporation and its data suppliers

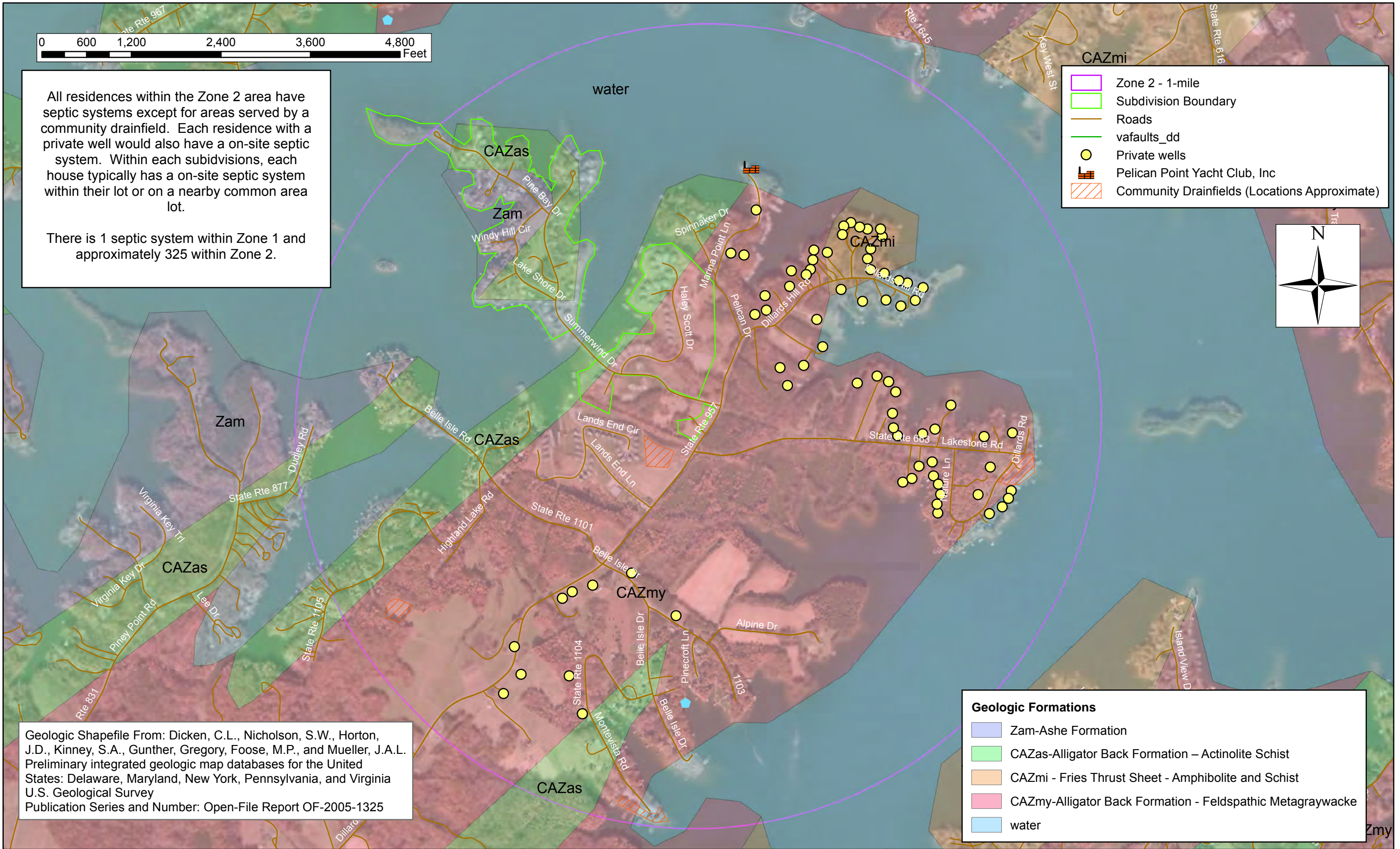


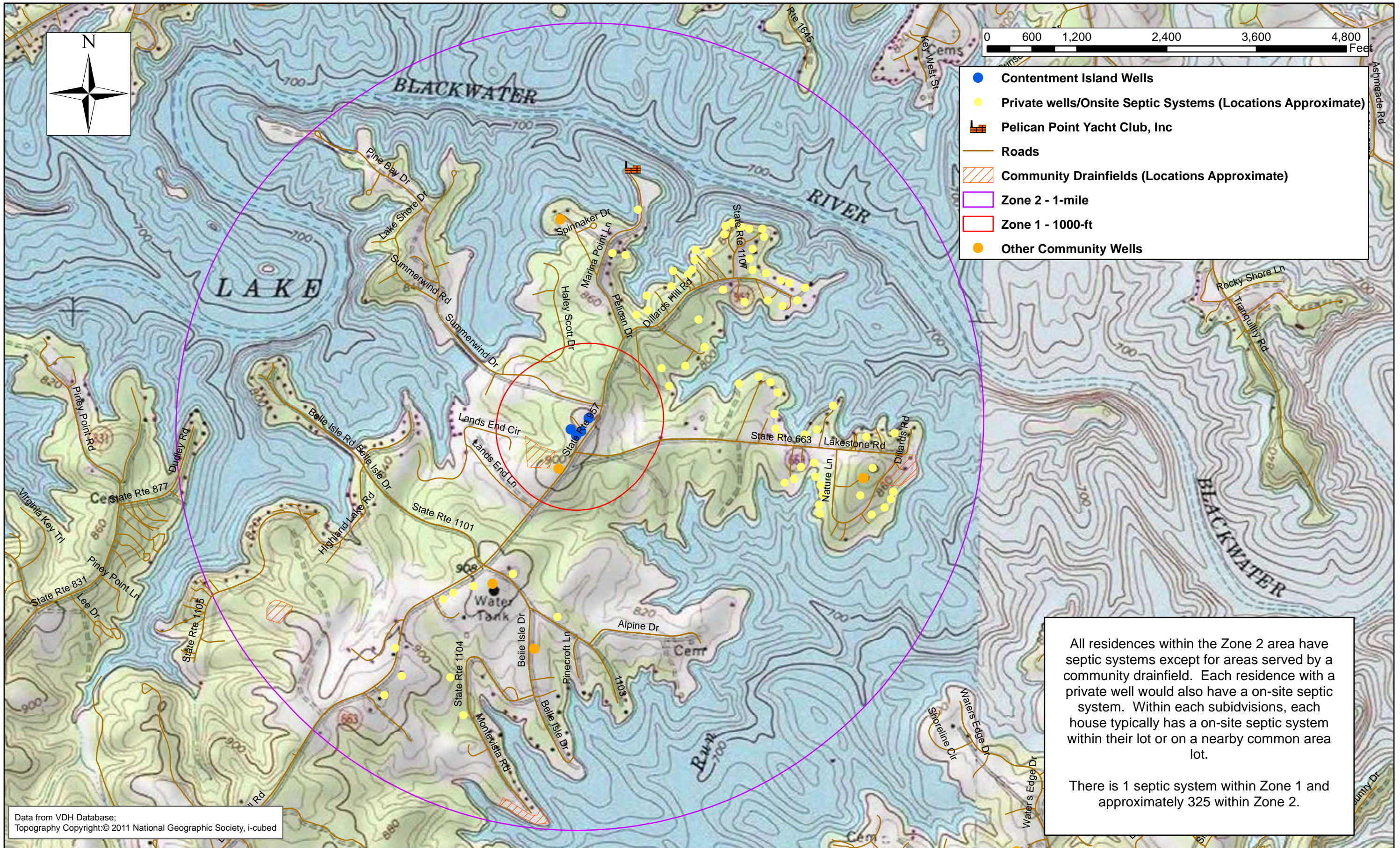


Contentment Island Well Locations, along with the Zone 1 boundary and Community Well Locations have been removed for confidential reasons. See Volume I For Additional Information

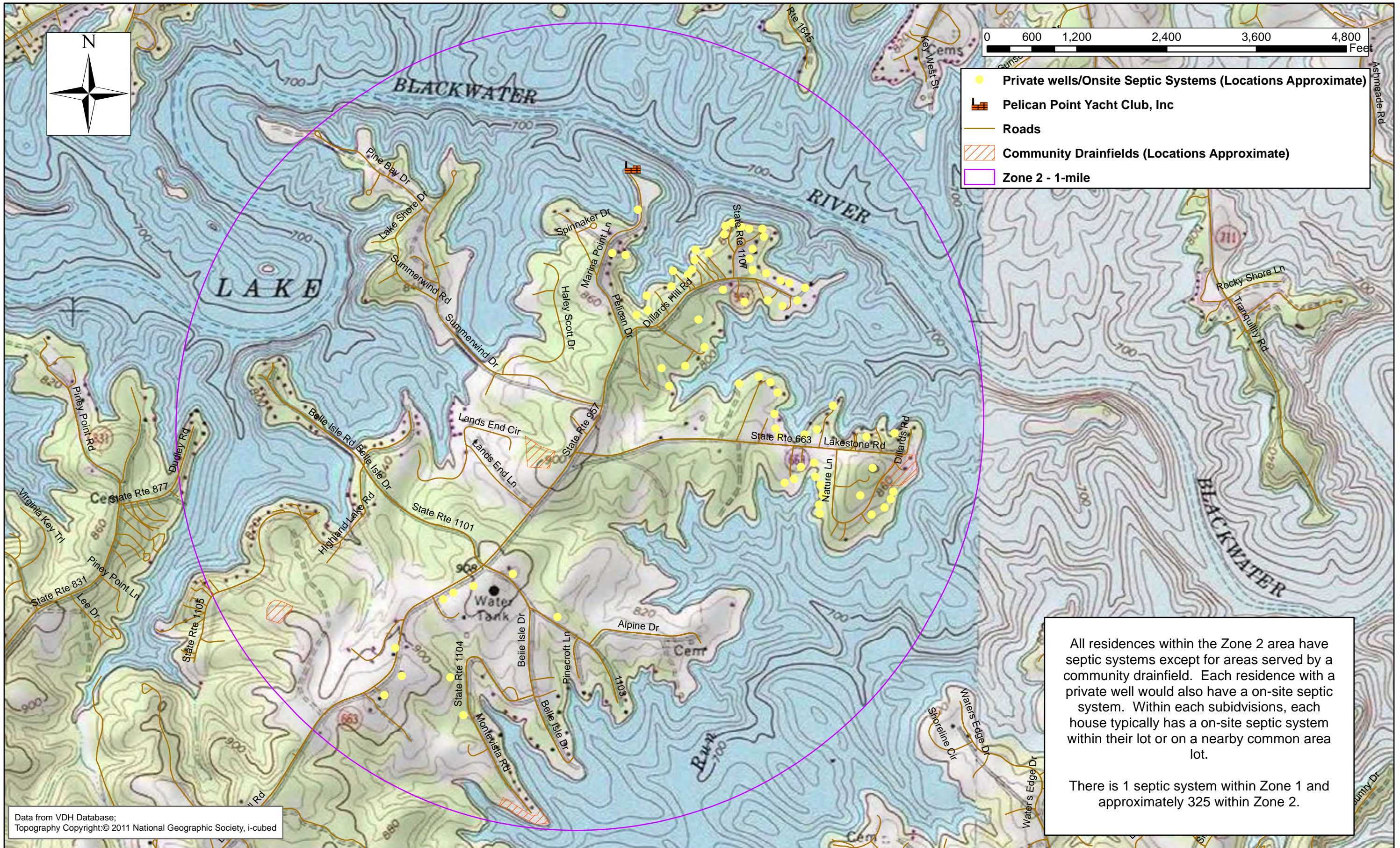
Data from VDH Database
Bing Maps Aerial (c) 2010 Microsoft Corporation and its data suppliers







Data from VDH Database;
Topography Copyright:© 2011 National Geographic Society, i-cubed



Contentment Island Well Locations, along with the Zone 1 boundary and Community Well Locations have been removed for confidential reasons. See Volume I For Additional Information