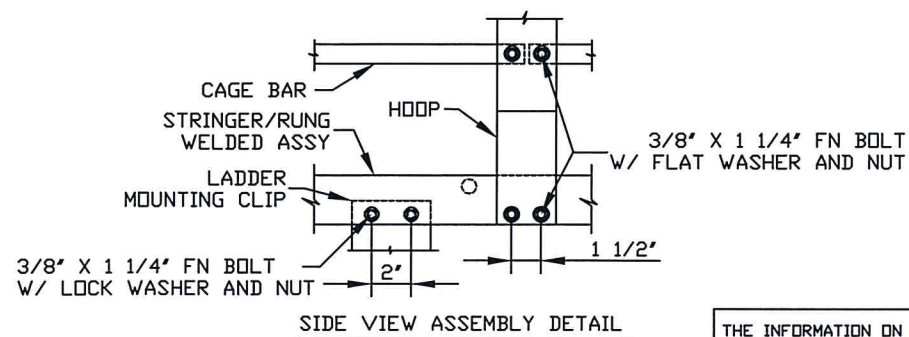
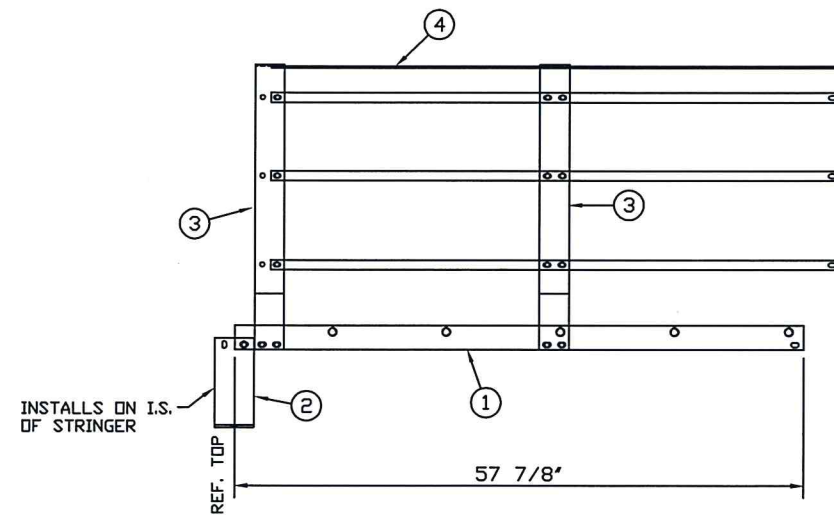
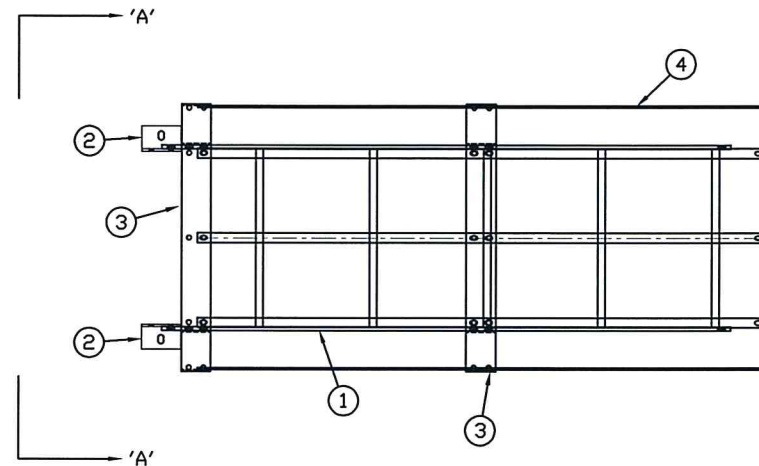


ITEM	D/S	PART NO.	QTY	DESCRIPTION	EST. WT.	PAINT
1	B	LSM001	1	STRINGER/RUNG ASSEMBLY X 57 7/8" O.A.L.	40	
2	B	LCP4	2	LADDER MOUNTING CLIP	3	
3	B	H00P2	2	H00P - MID	12	
4	B	CB002	7	CAGE BAR X 57 3/4" OAL	3	
5	-	BLTFG03751250	42	3/8" X 1 1/4" FN BOLT HDG		
6	-	NUTHG0375	42	3/8" NUT HEX		
7	-	WSHFG0375	37	3/8" FLAT WASHER HDG		
8	-	WSHLG0375	5	3/8" LOCK WASHER HDG		

ASSEMBLY NOTE:
INITIALLY ASSEMBLE UTILIZING LOOSE FIT CONNECTIONS. INSTALL AND ALIGN ALL PARTS BEFORE FULLY TIGHTENING HARDWARE.



Kevin W Sheddric, PE
2016.01.11 13:20:43 -06'00'

ASSEMBLY WEIGHT = 91 LBS

THE INFORMATION ON THIS DOCUMENT IS CONFIDENTIAL PROPERTY OF TANK MANUFACTURER AND/OR ITS AFFILIATES. ANY OTHER USE, RETENTION, DISSEMINATION, FORWARDING, PRINTING OR COPYING OF THIS DOCUMENT TO UNAUTHORIZED PARTIES IS STRICTLY PROHIBITED, WITHOUT THE EXPRESSED WRITTEN CONSENT OF TANK MANUFACTURER.



E						DRAWN BY:	JT	58' MID. LADDER ASSY.			
D						DATE:	10/9/07				
C						REVIEWED BY:					
B	UPDATED BORDER	6/21/11	JA	DJC							
A	MADE TO REFLECT STRINGER ASSY	11/8/07	JT	DJC		DATE:		10/19/07		C SCALE: NTS	
REV	REVISION	DATE	BY	APP							
										DRAWING NO.	LSA006