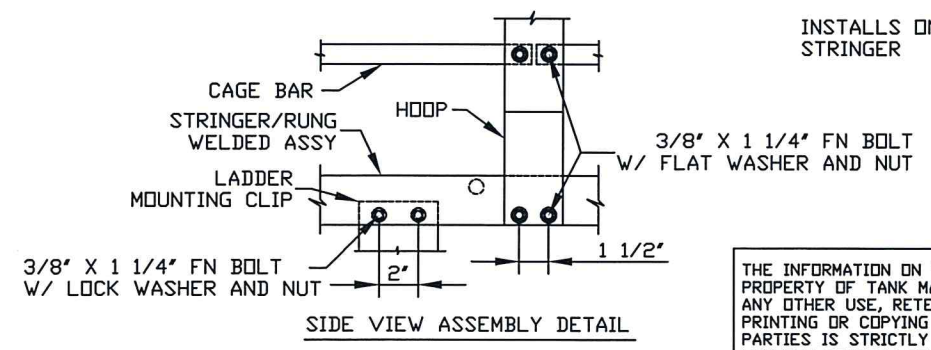
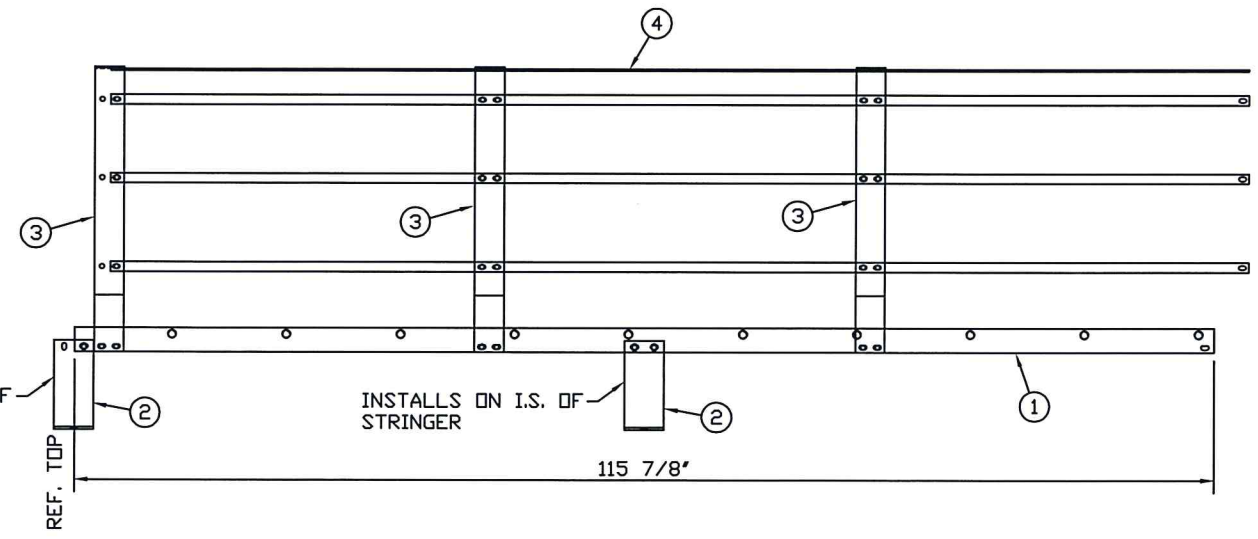
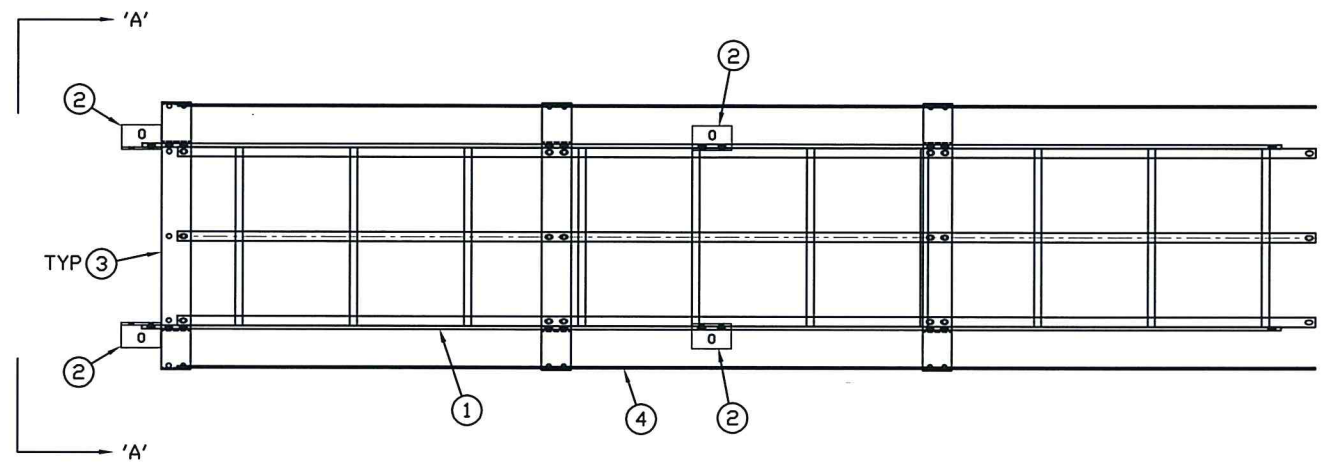


ITEM	D/S	PART NO.	QTY	DESCRIPTION	EST. WT.	PAINT
1	B	LSM002	1	STRINGER/RUNG ASSEMBLY X 115 7/8" O.A.L.	82	
2	B	LCP4	4	LADDER MOUNTING CLIP	3	
3	B	HOOP2	3	HOOP - MID	12	
4	B	CB003	7	CAGE BAR X 115 3/4" DAL	6	
5	-	BLTFG03751250	66	3/8" X 1 1/4" FN BOLT HDG		
6	-	NUTHG0375	66	3/8" NUT HEX		
7	-	WSHFG0375	57	3/8" FLAT WASHER HDG		
8	-	WSHLG0375	9	3/8" LOCK WASHER HDG		

ASSEMBLY NOTE:
INITIALLY ASSEMBLE UTILIZING LOOSE FIT CONNECTIONS. INSTALL AND ALIGN ALL PARTS BEFORE FULLY TIGHTENING HARDWARE.



Kevin W Sheddric, PE
2016.01.11 13:21:01 -06'00'

ASSEMBLY WEIGHT = 172 LBS

THE INFORMATION ON THIS DOCUMENT IS CONFIDENTIAL PROPERTY OF TANK MANUFACTURER AND/OR ITS AFFILIATES. ANY OTHER USE, RETENTION, DISSEMINATION, FORWARDING, PRINTING OR COPYING OF THIS DOCUMENT TO UNAUTHORIZED PARTIES IS STRICTLY PROHIBITED, WITHOUT THE EXPRESSED WRITTEN CONSENT OF TANK MANUFACTURER.



E						DRAWN BY:	JT		
D						DATE:	10/9/07		
C									
B	UPDATED BORDER	11/23/09	JA	DJC		REVIEWED BY:	DJC		
A	CORRECTED TO REFLECT STRINGER ASSEMBLY	10/10/07	JT	DJC		DATE:	10/19/07	C	SCALE: NTS
REV	REVISION	DATE	BY	APP				DRAWING NO.	LSA007

116' MID. LADDER ASSY.