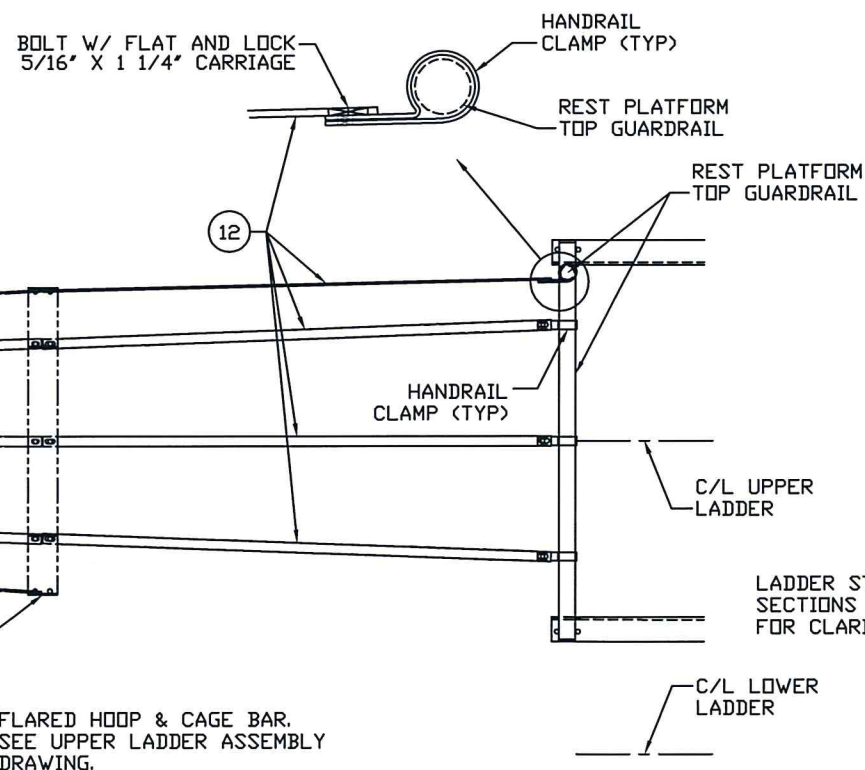
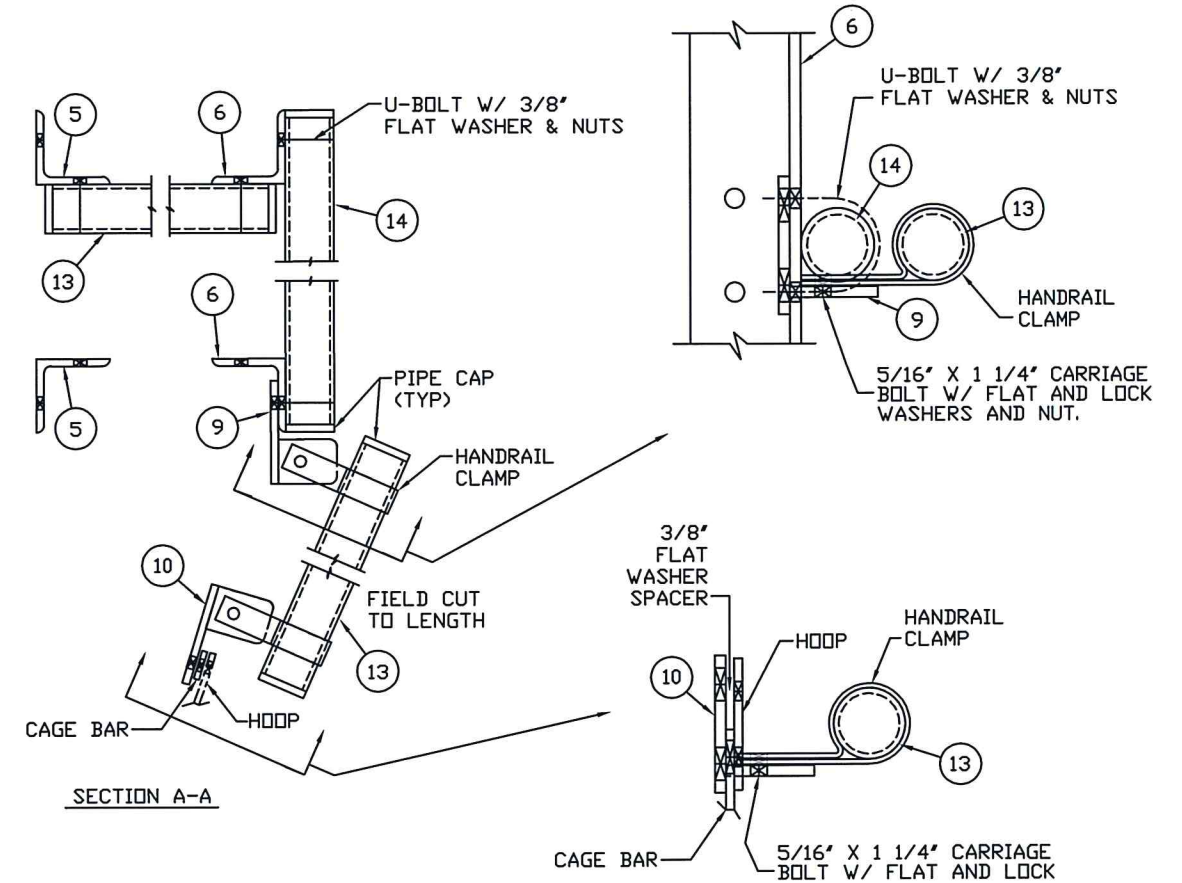
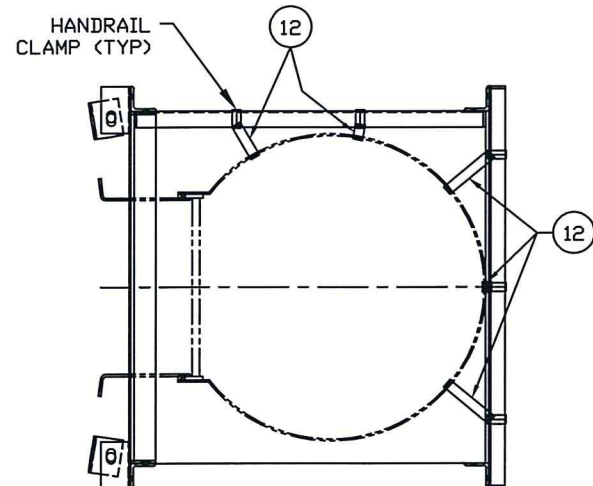


SIDE VIEW
PLATFORM ASSEMBLY DETAIL



CAGE BAR TO REST PLATFORM DETAIL



SECTION A-A



Kevin W Sheddric, PE
2016.01.11 13:21:46 -06'00'

ASSEMBLY NOTE:
INITIALLY ASSEMBLE UTILIZING LOOSE FIT
CONNECTIONS. INSTALL AND ALIGN ALL
PARTS BEFORE FULLY TIGHTENING HARDWARE.

ALL CONNECTIONS - USE 3/8" X 1 1/4" FN BOLT
W/ LOCK WASHER AND NUT (UNLESS NOTED)

THE INFORMATION ON THIS DOCUMENT IS CONFIDENTIAL.
PROPERTY OF TANK MANUFACTURER AND/OR ITS AFFILIATES.
ANY OTHER USE, RETENTION, DISSEMINATION, FORWARDING,
PRINTING OR COPYING OF THIS DOCUMENT TO UNAUTHORIZED
PARTIES IS STRICTLY PROHIBITED, WITHOUT THE EXPRESSED
WRITTEN CONSENT OF TANK MANUFACTURER.

TANK
CONNECTION
AFFILIATE GROUP
3609 NORTH 16TH ST. PARSONS, KANSAS 67357
620.423.3010 FAX: 620.423.3999

| REV | REVISION | DATE | BY | APP | DATE | 11/01/11 |
|-----|---|---------|-----|-----|--------------|----------|
| E | | 10/9/13 | MP | DJC | DRAWN BY: | JT |
| D | MIRRORED ITEMS #9 & #10 SECTION DETAILS | 9/7/12 | SAT | | DATE: | 10/16/07 |
| C | CAGE BAR ADDED | 9/19/11 | SGM | MP | REVIEWED BY: | DJC |
| B | GENERAL REVISIONS | 7/05/11 | DJC | JM | | |
| A | REVISED BORDER | | | | | |

SHEET 2 OF 2
SEE SHEET 1 FOR ASSEMBLY AND B.O.M.

REST PLATFORM
ASSEMBLY - RH

SCALE: NTS DRAWING NO. RHA001SHT2