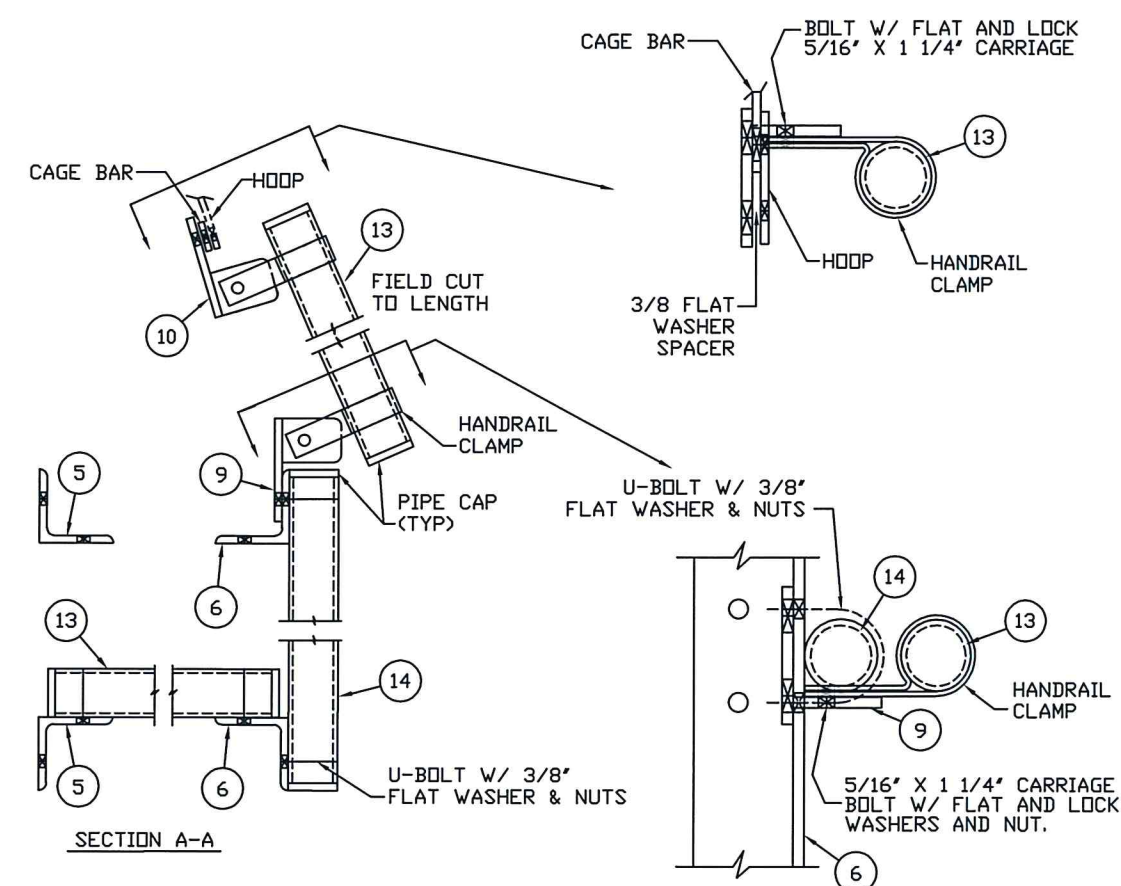
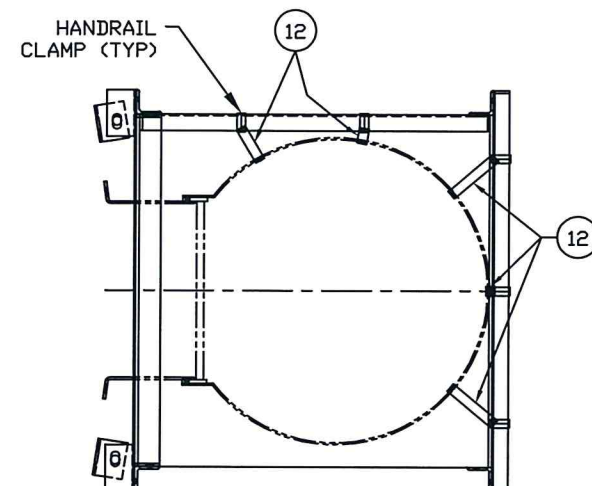


ASSEMBLY NOTE:
INITIALLY ASSEMBLE UTILIZING LOOSE FIT
CONNECTIONS. INSTALL AND ALIGN ALL
PARTS BEFORE FULLY TIGHTENING HARDWARE.



ASSY. WEIGHT= 295#

SHEET 2 OF 2
SEE SHEET 1 FOR PART NUMBERS

REST PLATFORM ASSEMBLY - LH

THE INFORMATION ON THIS DOCUMENT IS CONFIDENTIAL
PROPERTY OF TANK MANUFACTURER AND/OR ITS AFFILIATES.
ANY OTHER USE, RETENTION, DISSEMINATION, FORWARDING,
PRINTING OR COPYING OF THIS DOCUMENT TO UNAUTHORIZED
PARTIES IS STRICTLY PROHIBITED, WITHOUT THE EXPRESSED
WRITTEN CONSENT OF TANK MANUFACTURER.

TANK CONNECTION
AFFILIATE GROUP
 3609 NORTH 16TH ST. • PARSONS, KANSAS 67357
 620.423.3010 • FAX: 620.423.3999

E						DRAWN BY:	JT
D	ADDED CAGE BAR	9/7/12	SAT			DATE:	11/6/0
C	GENERAL REVISIONS	9/19/11	SGM	MP			
B	CHANGED DESCRIPTION TO LH ASSY	9/2/11	SGM			REVIEWED BY:	DJC
A	REVISED BORDER	11/23/09	JA	DJC		DATE:	11/1/0
REV	REVISION	DATE	BY	APP			

DRAWN BY:	JT
DATE:	11/6/07
REVIEWED BY:	DJC
DATE:	11/1/07

7	C	SCALE: NTS	DRAWING NO.	LHA001SHT2
---	---	------------	-------------	------------