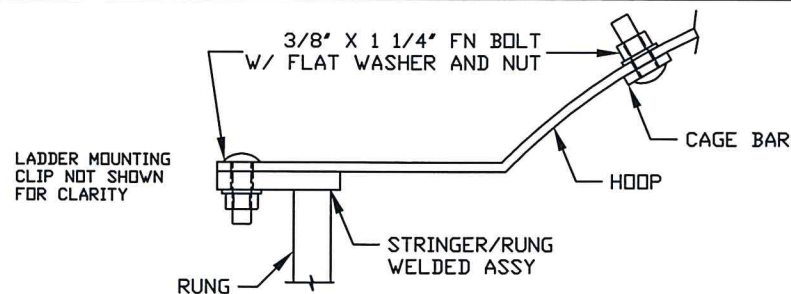
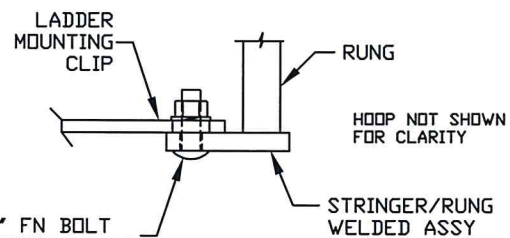


VIEW A-A



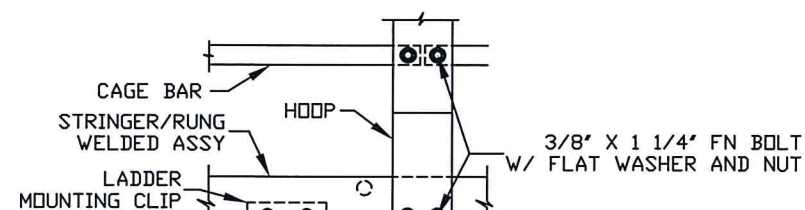
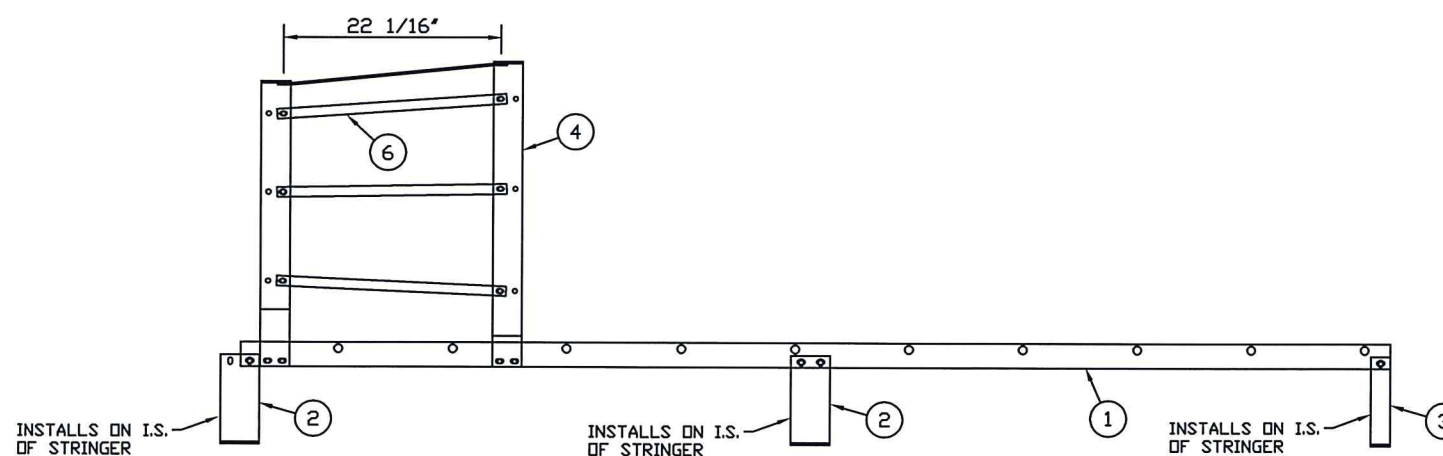
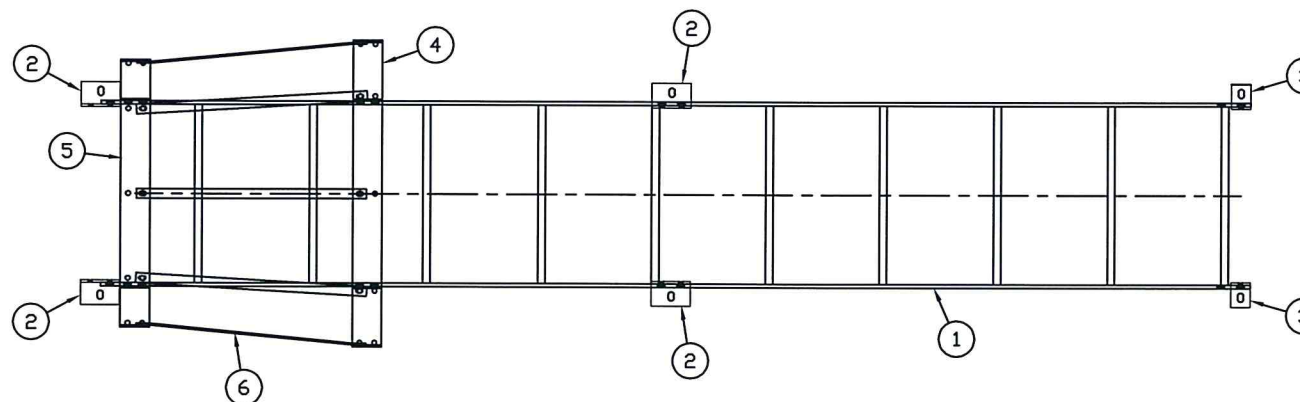
DETAIL B



DETAIL C

ITEM	D/S	PART NO.	QTY	DESCRIPTION	EST. WT.	PAINT
1	B	LSB002	1	STRINGER/RUNG ASSEMBLY	82	
2	B	LCP4	4	LADDER MOUNTING CLIP	3	
3	B	70389020	2	LADDER MOUNTING CLIP	3	
4	B	HOOP1	1	HOOP - FLARED	14	
5	B	HOOP2	1	HOOP - MID	12	
6	B	CB012	7	CAGE BAR X 23 3/8\" DIAL	1	
7	-	BLTFG03751250	34	3/8\" X 1 1/4\" FN BOLT HDG		
8	-	NUTHG0375	34	3/8\" NUT HEX		
9	-	WSHFG0375	23	3/8\" FLAT WASHER HDG		
10	-	WSHLG0375	11	3/8\" LOCK WASHER HDG		

ASSEMBLY NOTE:  
INITIALLY ASSEMBLE UTILIZING LOOSE FIT CONNECTIONS. INSTALL AND ALIGN ALL PARTS BEFORE FULLY TIGHTENING HARDWARE.



SIDE VIEW ASSEMBLY DETAIL



Kevin W Sheddric, PE  
2016.01.11 13:22:53 -06'00'

ASSEMBLY WEIGHT = 133 LBS

THE INFORMATION ON THIS DOCUMENT IS CONFIDENTIAL PROPERTY OF TANK MANUFACTURER AND/OR ITS AFFILIATES. ANY OTHER USE, RETENTION, DISSEMINATION, FORWARDING, PRINTING OR COPYING OF THIS DOCUMENT TO UNAUTHORIZED PARTIES IS STRICTLY PROHIBITED, WITHOUT THE EXPRESSED WRITTEN CONSENT OF TANK MANUFACTURER.

**TANK CONNECTION**  
AFFILIATE GROUP  
3609 NORTH 16TH ST. PARSONS, KANSAS 67357  
620.423.3010 FAX: 620.423.3999

E						DRAWN BY:	JT	
D						DATE:	10/17/07	
C						REVIEWED BY:	BCR	
B	UPDATED BORDER	11/23/09	JA	DJC		DATE:	10/20/07	C
A	BOTTOM CLIPS WERE LCP5	12/29/08	MC	DJC		SCALE: NTS	DRAWING NO.	LSA008
REV	REVISION	DATE	BY	APP				