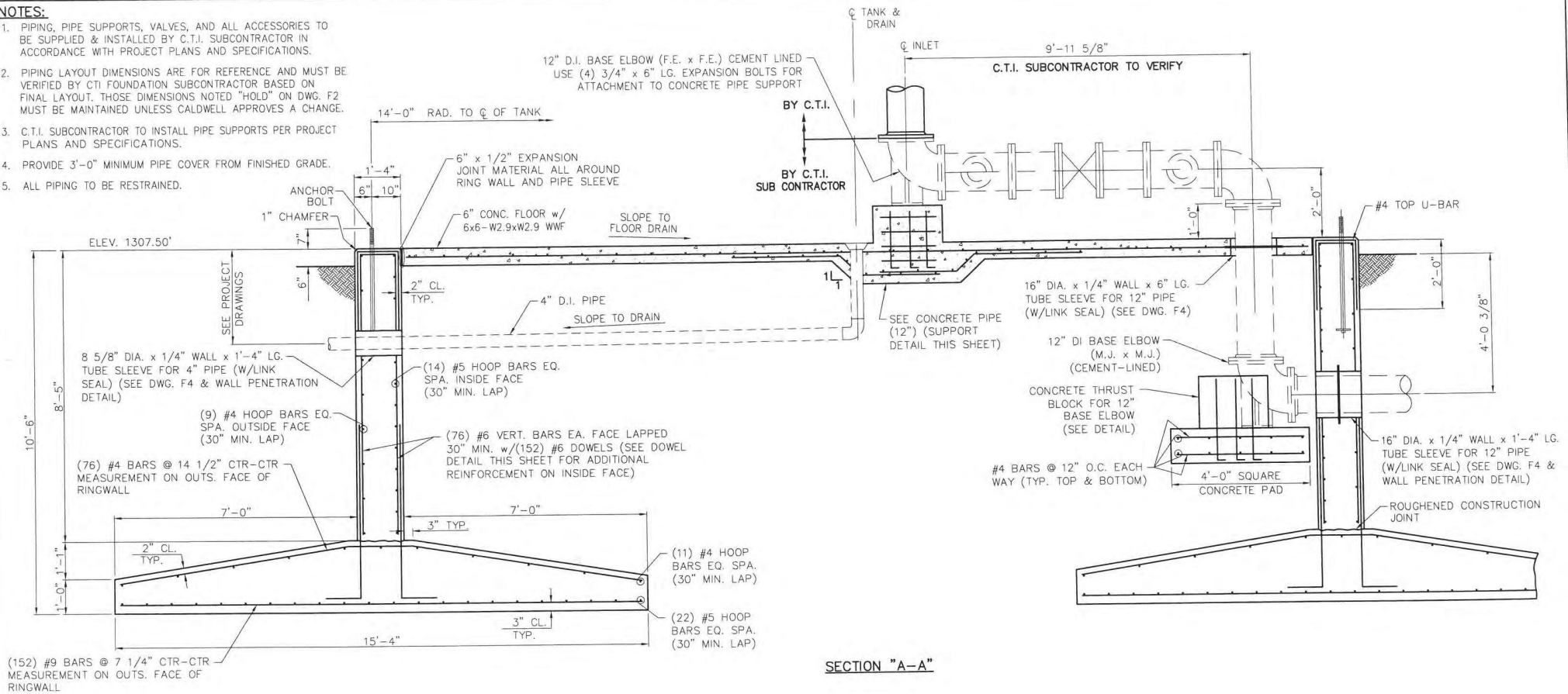
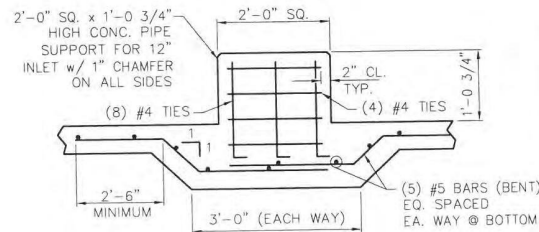
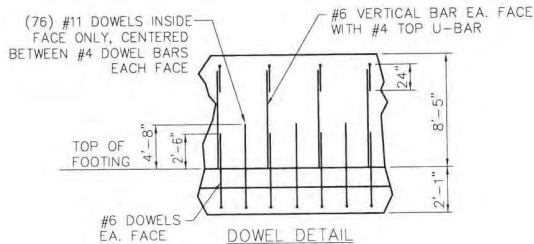
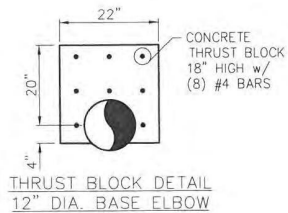


NOTES:

1. PIPING, PIPE SUPPORTS, VALVES, AND ALL ACCESSORIES TO BE SUPPLIED & INSTALLED BY C.T.I. SUBCONTRACTOR IN ACCORDANCE WITH PROJECT PLANS AND SPECIFICATIONS.
2. PIPING LAYOUT DIMENSIONS ARE FOR REFERENCE AND MUST BE VERIFIED BY C.T.I. FOUNDATION SUBCONTRACTOR BASED ON FINAL LAYOUT. THOSE DIMENSIONS NOTED "HOLD" ON DWG. F2 MUST BE MAINTAINED UNLESS CALDWELL APPROVES A CHANGE.
3. C.T.I. SUBCONTRACTOR TO INSTALL PIPE SUPPORTS PER PROJECT PLANS AND SPECIFICATIONS.
4. PROVIDE 3'-0" MINIMUM PIPE COVER FROM FINISHED GRADE.
5. ALL PIPING TO BE RESTRAINED.



AS-BUILT



COMMONWEALTH OF VIRGINIA GERALD A. BURKE Lic. No. 034963 PROFESSIONAL ENGINEER Gull A. 11-27-19		REV. BY: DATE REMARKS 11/15/19	
CALDWELL Since 1887 Water - Energy - Industrial		FRANKLIN COUNTY, VIRGINIA 500,000 GALLON PEDESHERE	
BY: TSYV4AB DATE: 11/15/19		TITLE: RING FOUNDATION ELEVATION DRAWING NO.: E-8884 F3 OF 4	