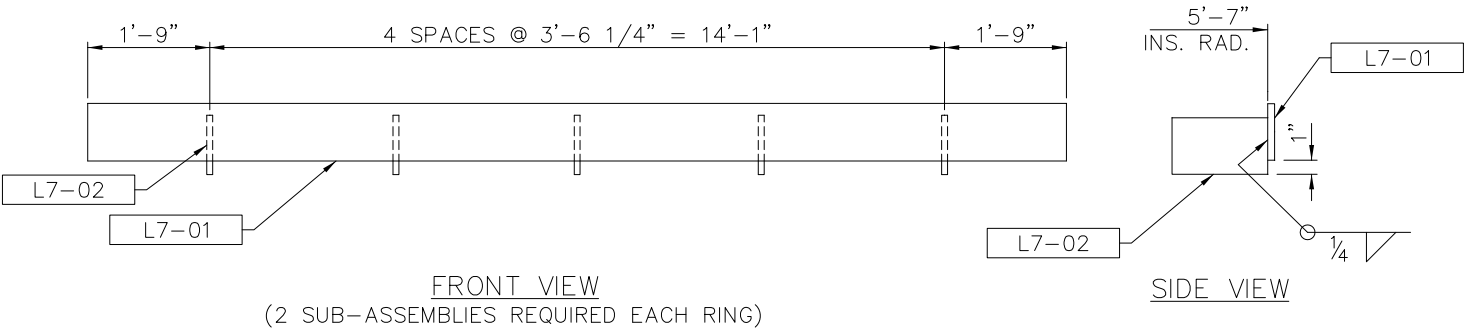
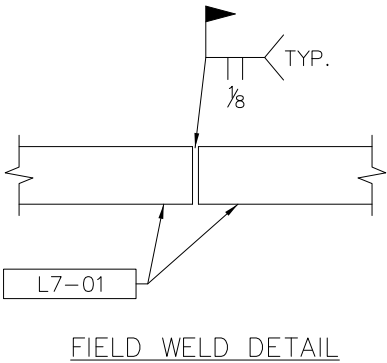



SHIPPING ITEM	QTY.	PC. MK.	QTY.	MATERIAL REQ'D.	DESCRIPTION	UNIT WT.
L7-UR-10	2			EXTERIOR UTILITY RING		105
		L7-01	1	FB 3/8" x 4" x 17'-7" LG.	RING	
		L7-02	5	FB 3/8" x 4" x 7" LG.	RING BRACE	



AS-BUILT

- NOTES:
1. MAXIMUM WORKING LOAD = 500 LBS. (CONDITIONAL*)
 2. COMPLETE INSPECTION SHALL BE PERFORMED PRIOR TO USE OF RING. IN THE EVENT ANY TYPE OF DAMAGE HAS OCCURRED TO THE RING, SUPPORTS, OR CONNECTIONS, USE OF SAME SHALL BE PROHIBITED.



	
TITLE:	EXTERIOR UTILITY RING FOR 10'-0" DIA. PEDESTAL/RISER
DRAWING NO.:	L7