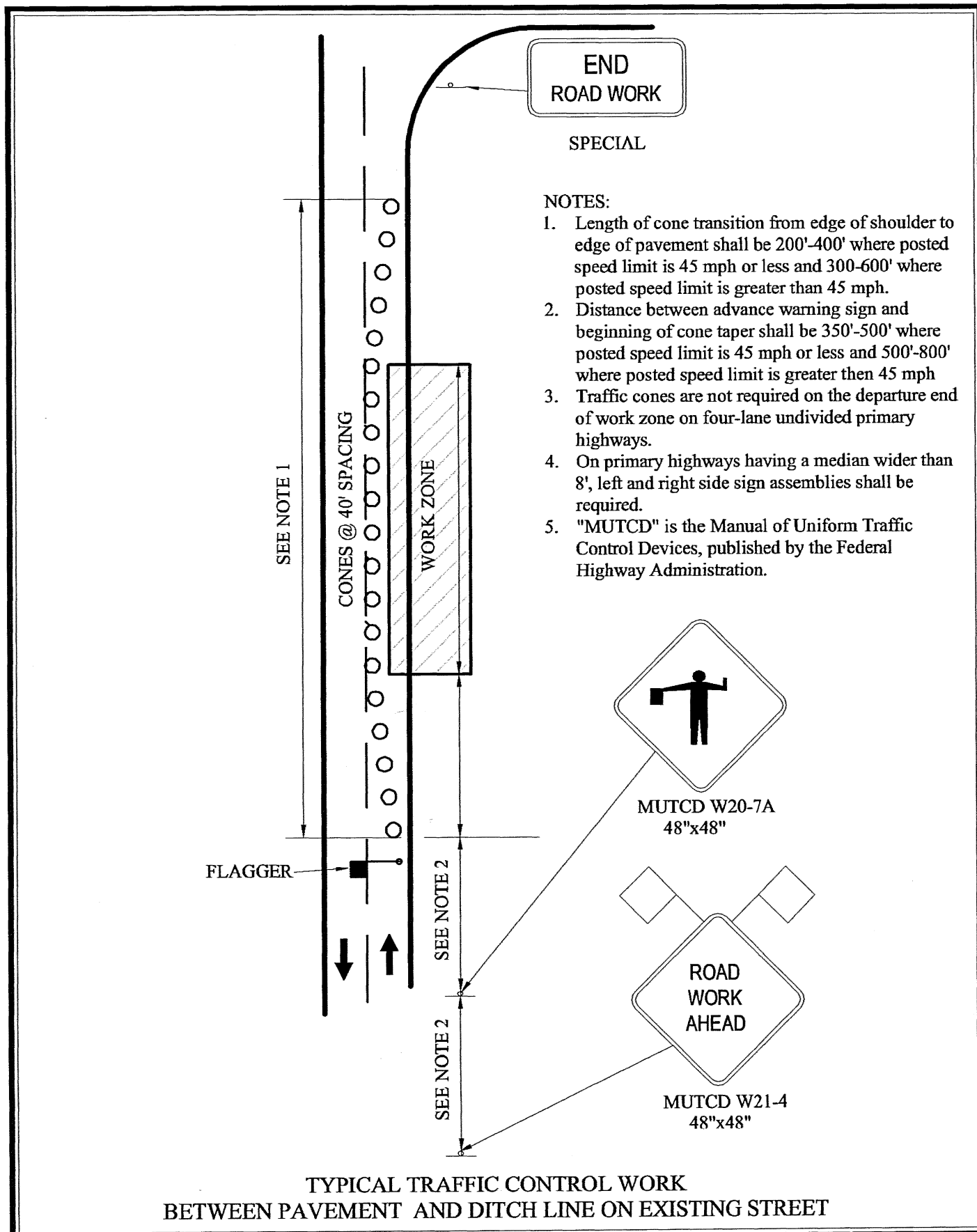


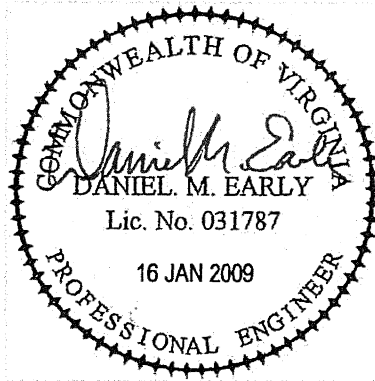
- GENERAL NOTES**
1. Actual site conditions may vary the quantity of geogrid required.
 2. Compaction shall be to 95% Standard Proctor Density.
 3. Compaction tests shall be taken.
 4. Geogrid shall extend to the front of the units.
 5. For specific installation details, see typical section sheet 005.
 6. Minimum embedment of base shall be 8 in. for walls under 4 ft. high, and 16 in. for larger walls.
 7. Determination of final design shall be made by a qualified engineer.
 8. Provide lateral drainage. Turf shall be established immediately after completion of the retaining wall.
 9. Contractor may opt for an unreinforced concrete leveling pad, 2 in. thick over 4 in. compacted granular base.
 10. Follow applicable state and local building codes for final wall installation.
- DESIGN PARAMETERS**
1. FS for sliding is 1.5
 2. FS for overturning is 2.0
 3. Allowable soil bearing pressure is 3000 psf.

SOIL TYPE A / CASE 1													
"G": Geogrid level-placement height above leveling pad													
Total Ht.	Exp. Ht.	# Layers	Geogrid		1	2	3	4	5	6	7	8	9
H	H'		L	Type									
2'-0"	1'-4"	0	N/A	N/A									
2'-8"	2'-0"	0	N/A	N/A									
4'-8"	4'-0"	2	4'-0"	A	1'-4"								
7'-4"	6'-0"	5	8'-6"	A	0'-8"	1'-4"	2'-0"	3'-4"	4'-8"				
9'-4"	8'-0"	7	11'-0"	A	0'-8"	1'-4"	2'-8"	3'-4"	4'-8"	6'-0"	7'-4"		
11'-4"	10'-0"	7	13'-0"	B	0'-8"	1'-4"	2'-8"	4'-0"	6'-0"	8'-0"	10'-0"		
13'-4"	12'-0"	7	14'-6"	C	0'-8"	2'-0"	4'-0"	6'-0"	8'-0"	10'-0"	12'-0"		
15'-4"	14'-0"	7	15'-6"	C	0'-8"	2'-8"	4'-8"	6'-8"	8'-8"	10'-8"	12'-8"		
17'-4"	16'-0"	9	16'-6"	C	0'-8"	1'-4"	3'-4"	4'-8"	6'-8"	8'-8"	10'-8"	14'-8"	
19'-4"	18'-0"	11	18'-0"	C	0'-8"	1'-4"	2'-8"	4'-0"	5'-4"	6'-8"	8'-8"	10'-8"	14'-8"
21'-4"	20'-0"	13	19'-0"	C	0'-8"	1'-4"	2'-8"	4'-0"	5'-4"	6'-8"	8'-0"	9'-4"	11'-4"

ACS DESIGN RW-09 ROCWOOD WALL - SOIL TYPE A / CASE 1
WWW.ACSDESIGNLLC.COM ■ ENGINEERING ■ SURVEYING ■ LANDSCAPE ARCHITECTURE ■ CONSTRUCTION MANAGEMENT



ACS DESIGN TRAFFIC CONTROL WORK ON EXISTING STREETS
This information is based on and modeled after the Work Area Protection Manual of the Virginia Department of Transportation.



ACS DESIGN
ENGINEERING • SURVEYING
LANDSCAPE ARCHITECTURE
CONSTRUCTION MANAGEMENT

2203 PETERS CREEK ROAD
ROANOKE, VIRGINIA 24017
P 540.562.2345 F 562.2344
INFO@ACSDESIGNLLC.COM
WWW.ACSDESIGNLLC.COM

WIRTZ SERVICES, LLC
WIRTZ CENTRAL SEWER SYSTEM
FRANKLIN COUNTY, VIRGINIA

© ACS DESIGN, LLC - Material included herein is covered by copyright. Use of this work in whole or in part is strictly forbidden without the expressed written consent of ACS DESIGN, LLC.

DRAWN BY: WTW
DESIGNED BY: DME
CHECKED BY: DES
DATE: 16 JAN 2009
JOB NUMBER: 05353A

REVISIONS:	
No. 1	
No. 2	
No. 3	
No. 4	
No. 5	

SHEET NO.:
C1.4

MISCELLANEOUS
DETAILS