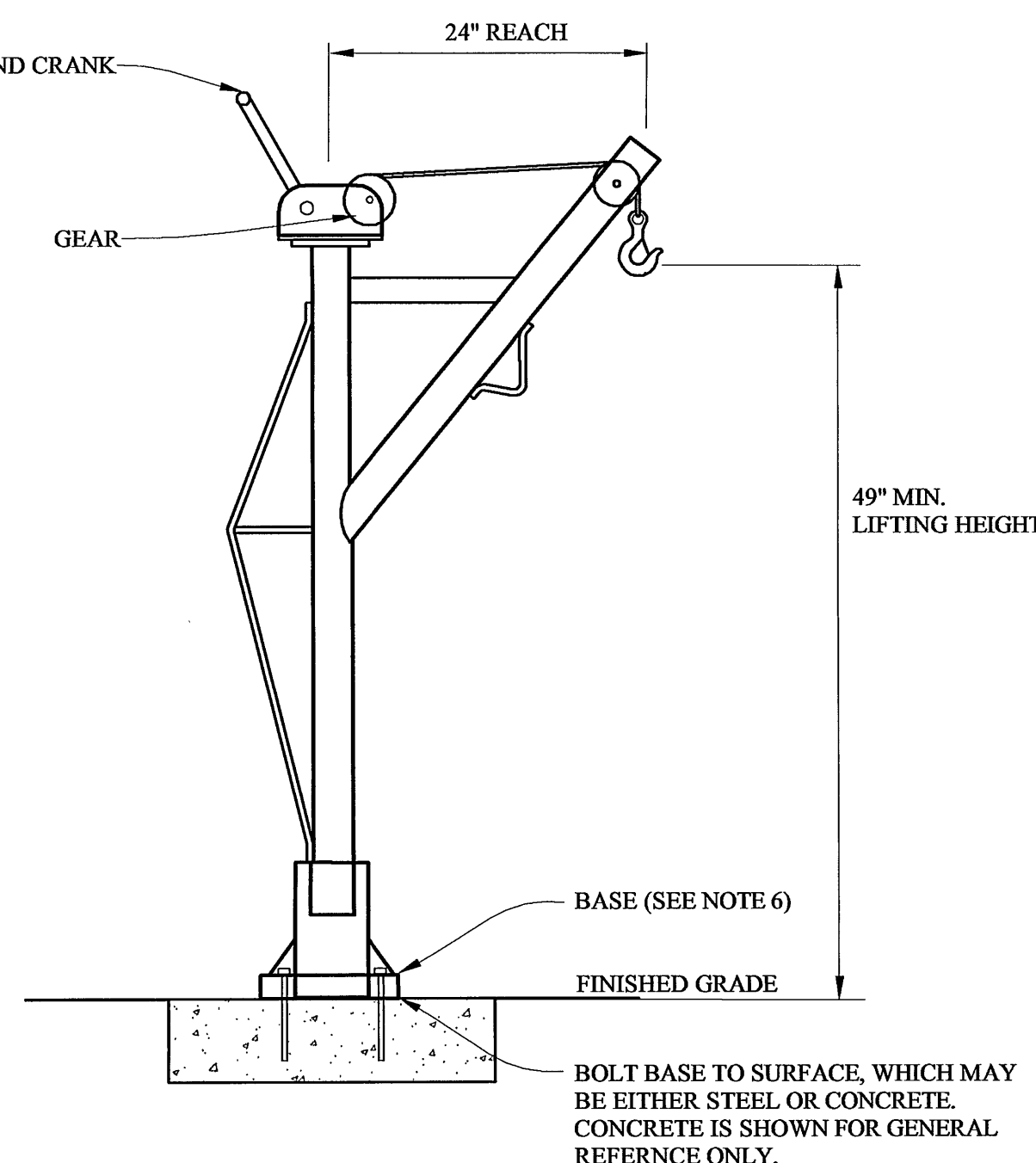


NOTES

1. Level Switches must be rated a minimum of 2 Amps @ 120 Volts.
2. Torque 1/2" Field Terminals to 20 inch-pounds and 3/8" to 20 inch-pounds.
3. Field Wiring must be 60° Copper wire minimum.
4. Control panel is shown as schematic only. Contractor shall provide shop drawings for review and approval.

ADS PUMP STATION CONTROL PANEL AND 4-CHANNEL AUTODIALER



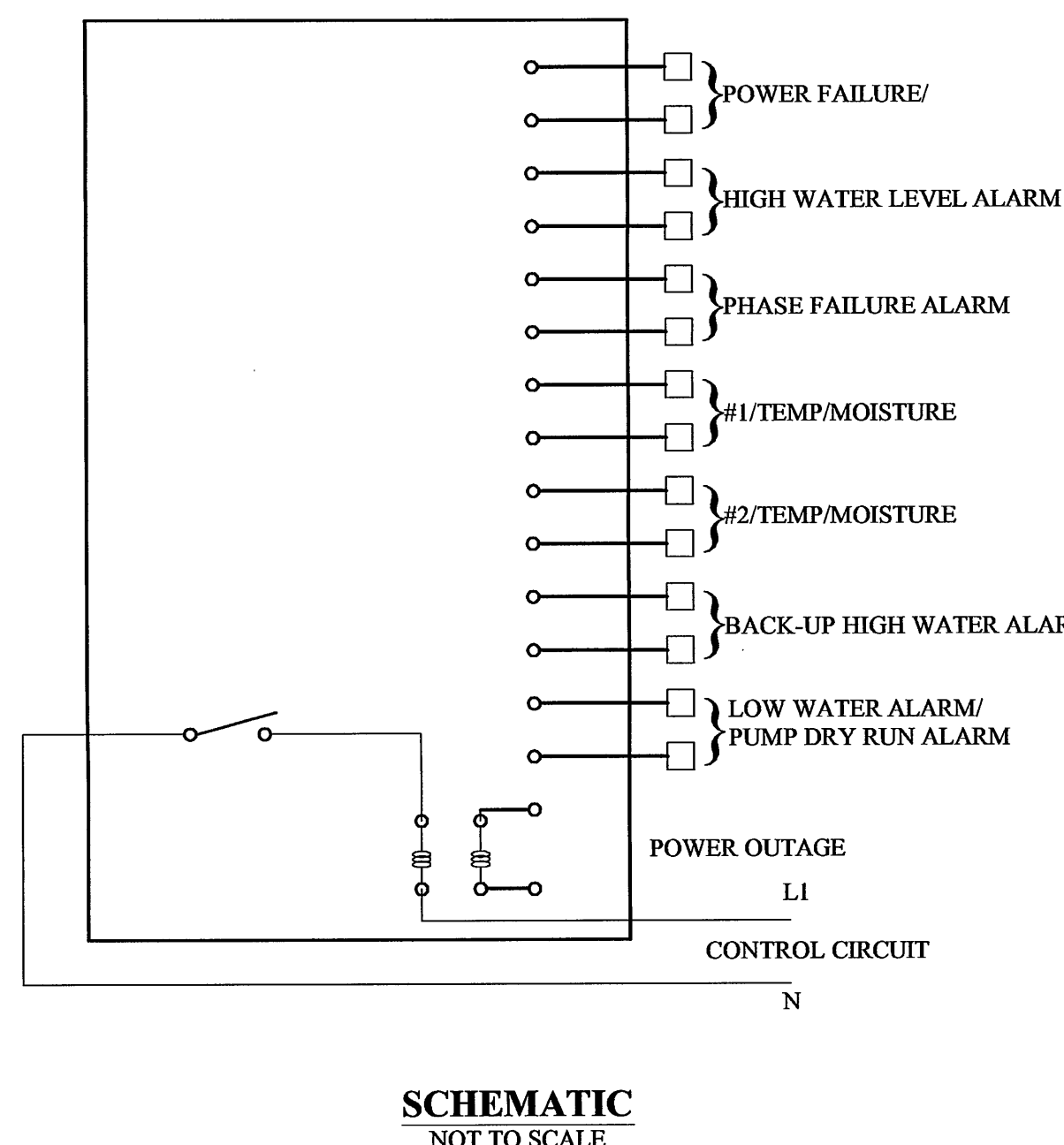
NOTES:

1. Contractor shall provide MAPECO Series 5124 portable hoist or approved equal.
2. Hoist shall include a spur gear or worm gear hand winch with brake for load control.
3. MAPECO Series 5124M2 and 5124M2GAL hoist worm hand winch may be driven using a maximum 400 RPM drive motor.
4. Hoist shall be stainless steel.
5. Hoist shall have a corrosion resistant finish with electrostatic powder coating.
6. Base shall be Mapeco model 524 (pedestal base with upright mount), Mapeco model 524F (socket base with flush mount), or approved equal, installed according to manufacturer's specifications.

ACS
DESIGN

GE-01 HOIST

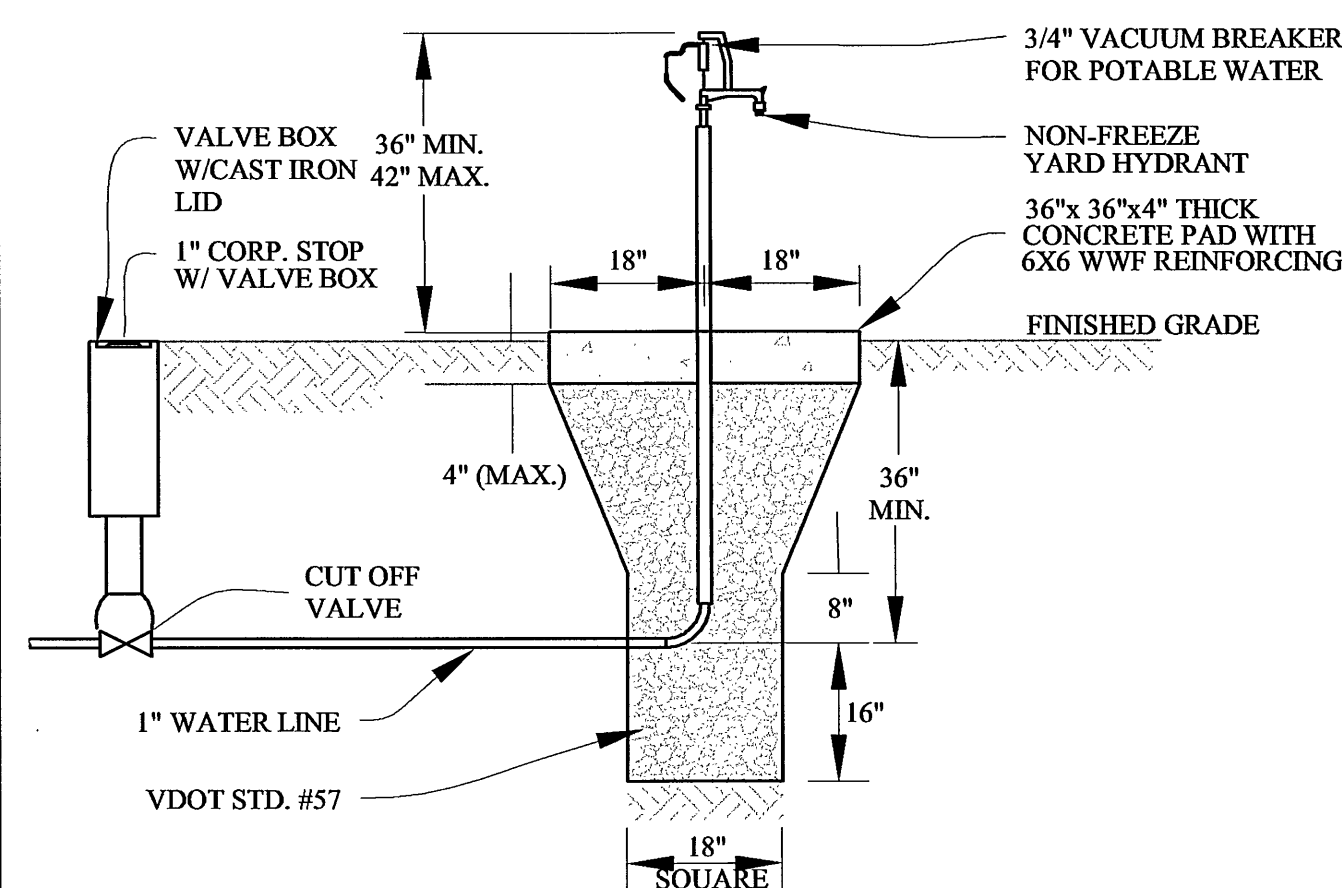
WWW.ACSDESIGNINC.COM ■ ENGINEERING ■ SURVEYING ■ LANDSCAPE ARCHITECTURE ■ CONSTRUCTION MANAGEMENT



NOTES

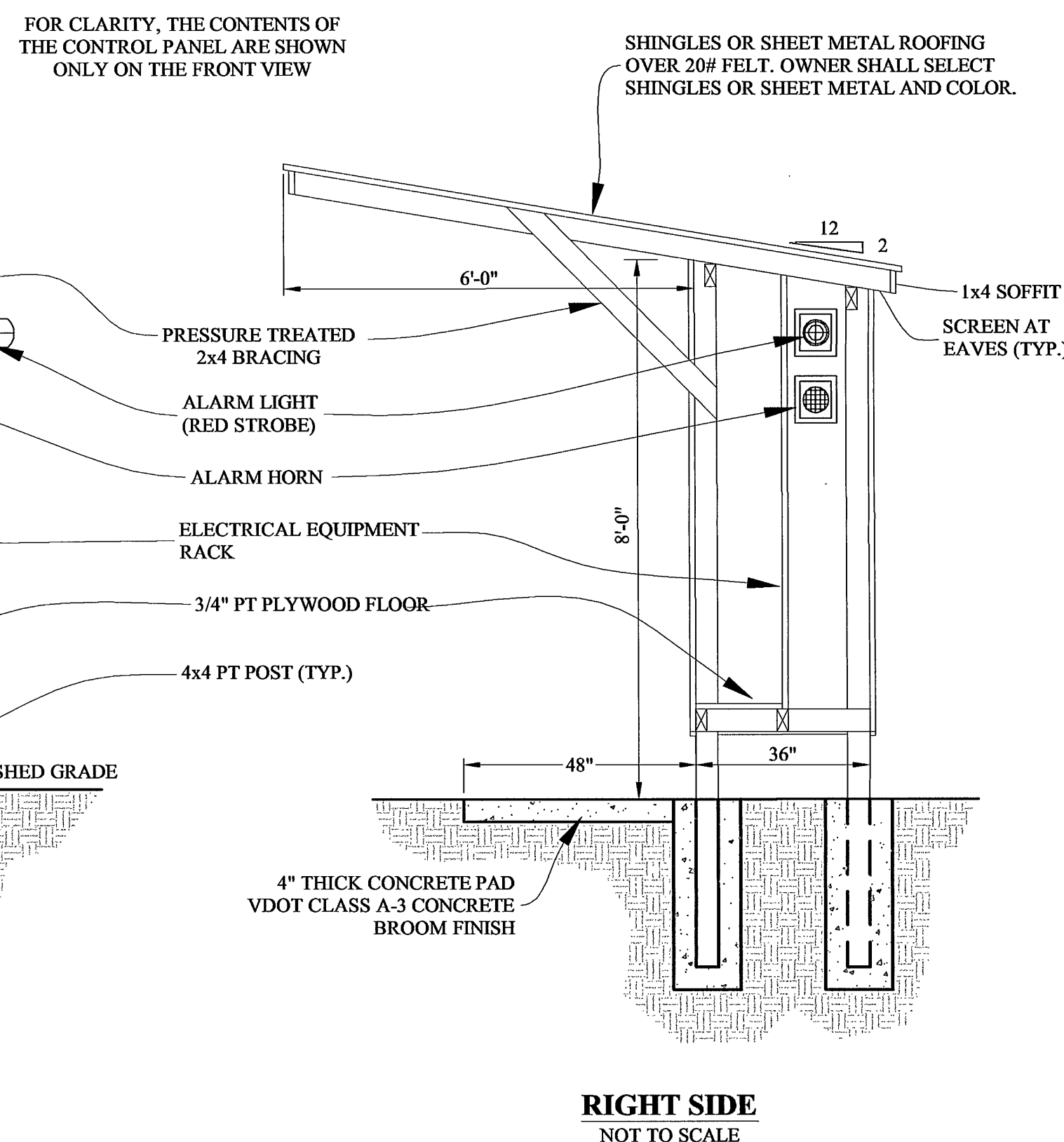
- Autodialer shall be by RACO or approved equivalent. Coordinate with construction specifications

ACS ALARM TELEMETRY
DESIGN WWW.ACSDESIGNINC.COM ■ ENGINEERING ■ SURVEYING ■ LANDSCAPE ARCHITECTURE ■ CONSTRUCTION MANAGEMENT

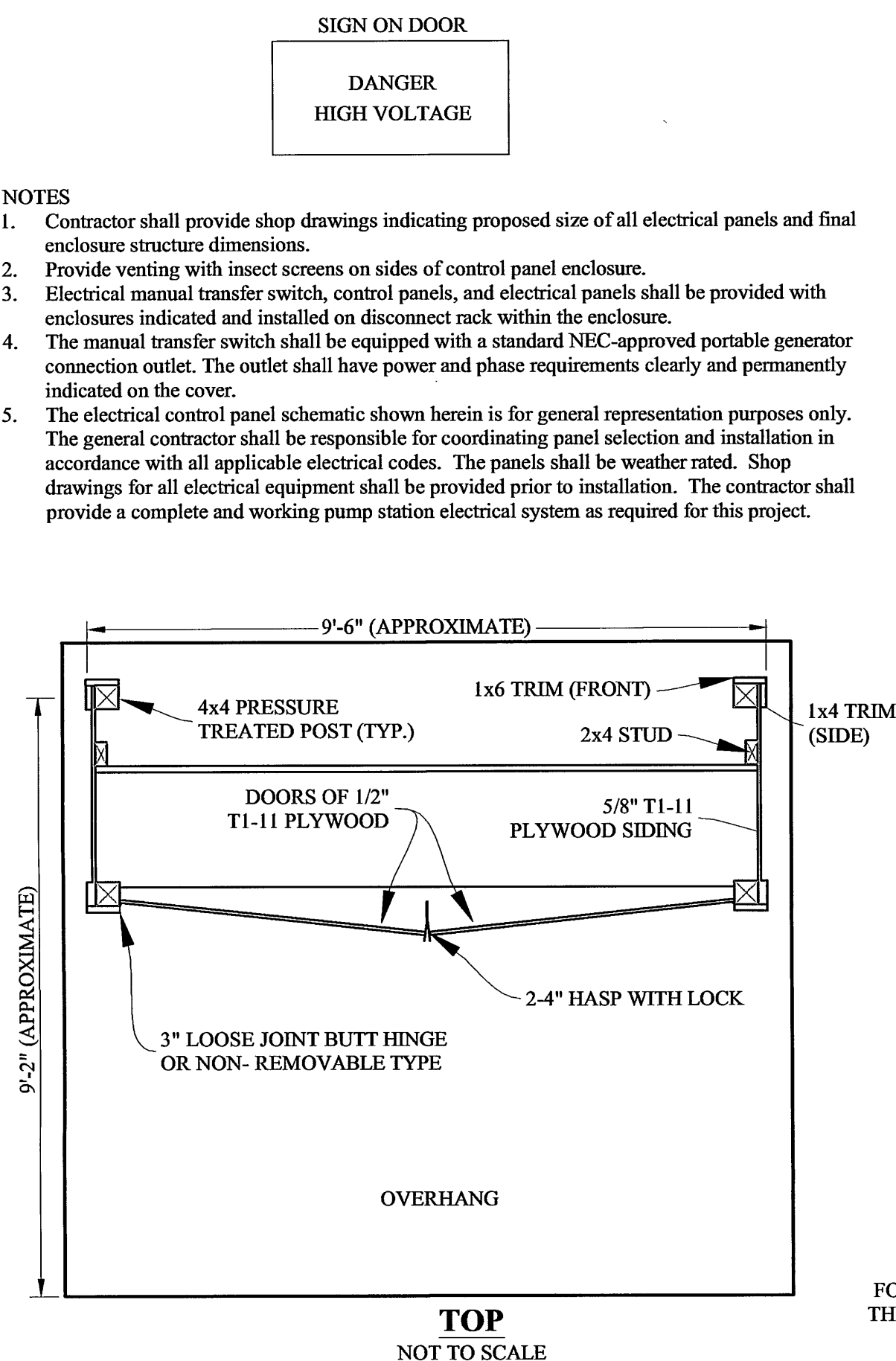


NOTES:
1. Material must be rigid enough to withstand abuse.

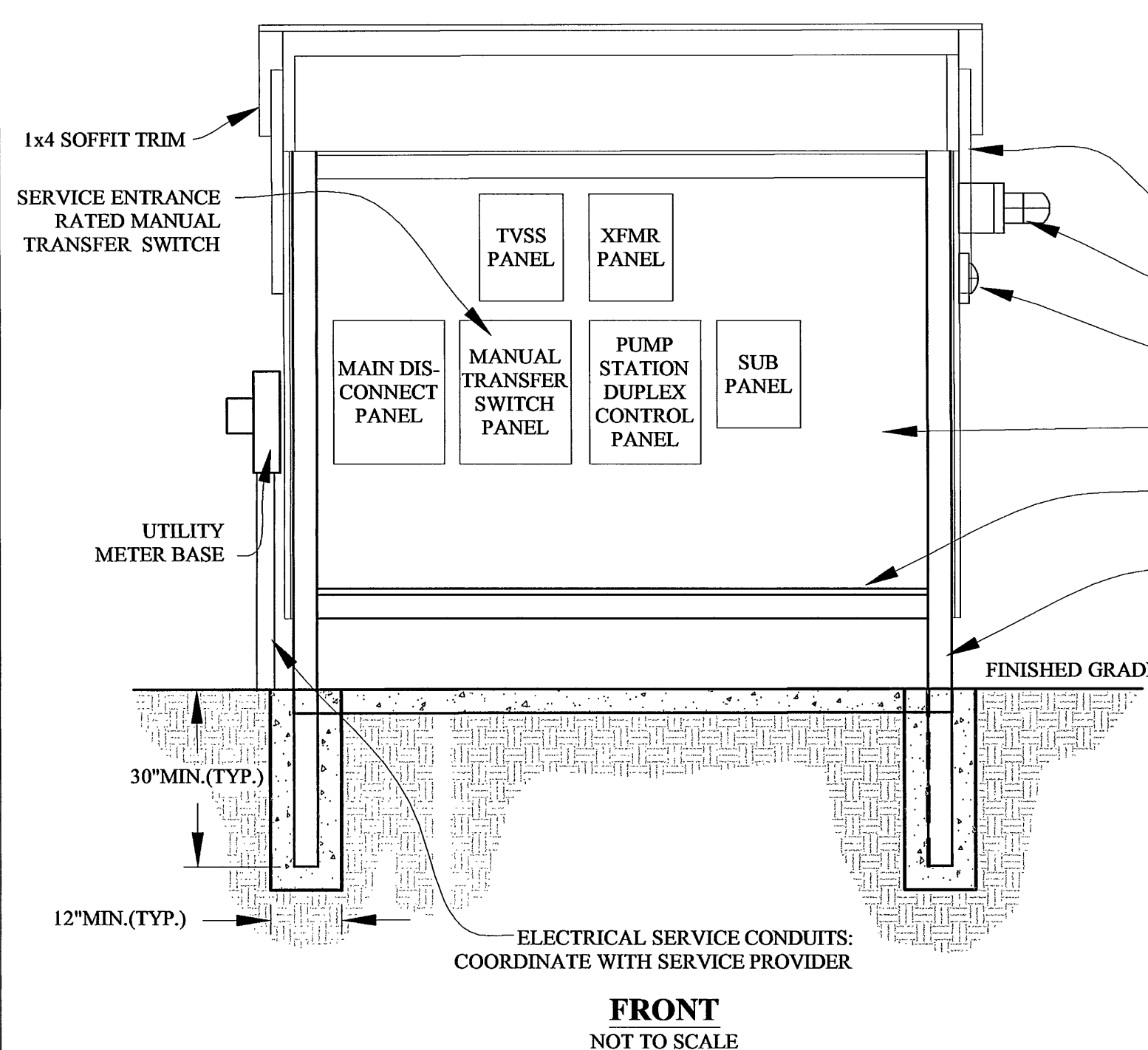
ACS DESIGN
WS-07 YARD HYDRANT
WWW.ACSDESIGNINC.COM • ENGINEERING • SURVEYING • LANDSCAPE ARCHITECTURE • CONSTRUCTION MANAGEMENT



CONTROL PANEL ENCLOSURE



FOR CLARITY, THE CONTENTS OF
THE CONTROL PANEL ARE SHOWN
ONLY ON THE FRONT VIEW



CONTROL PANEL ENCLOSURE