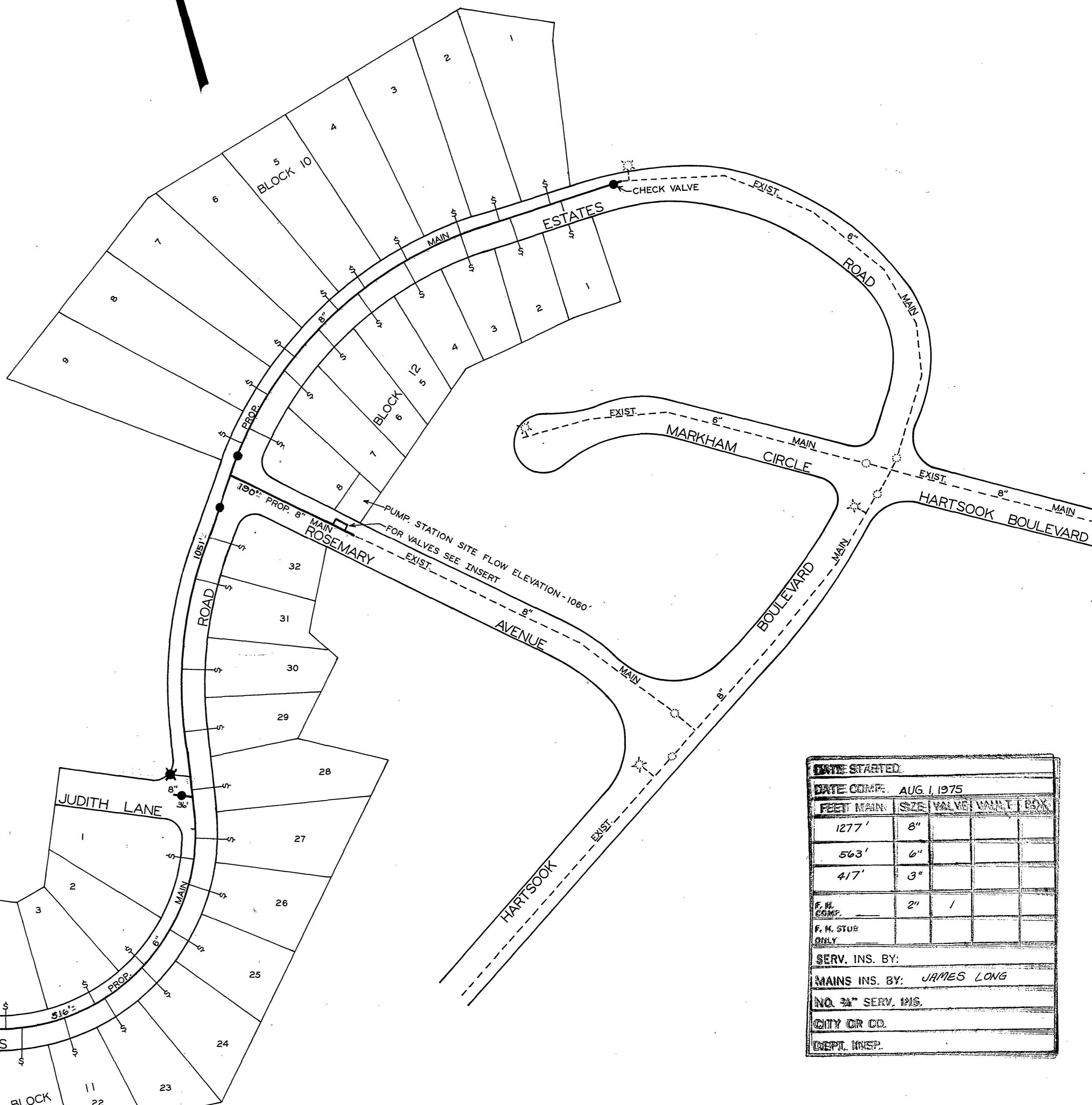
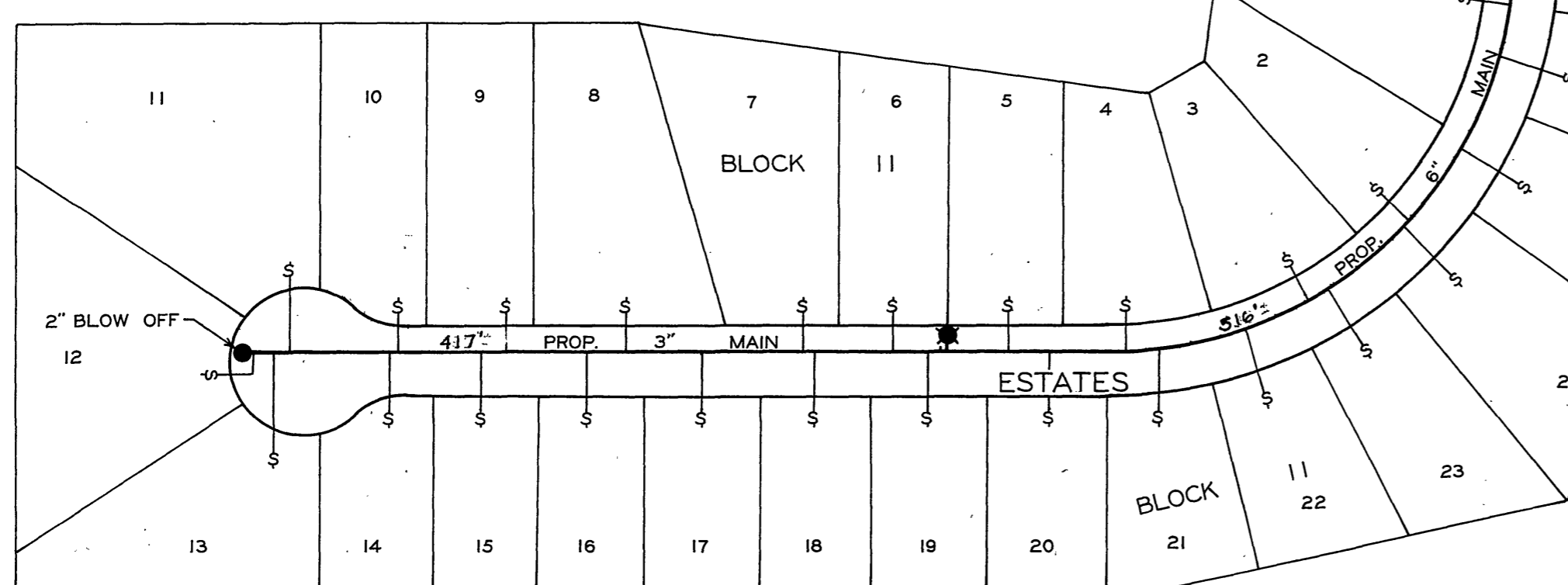
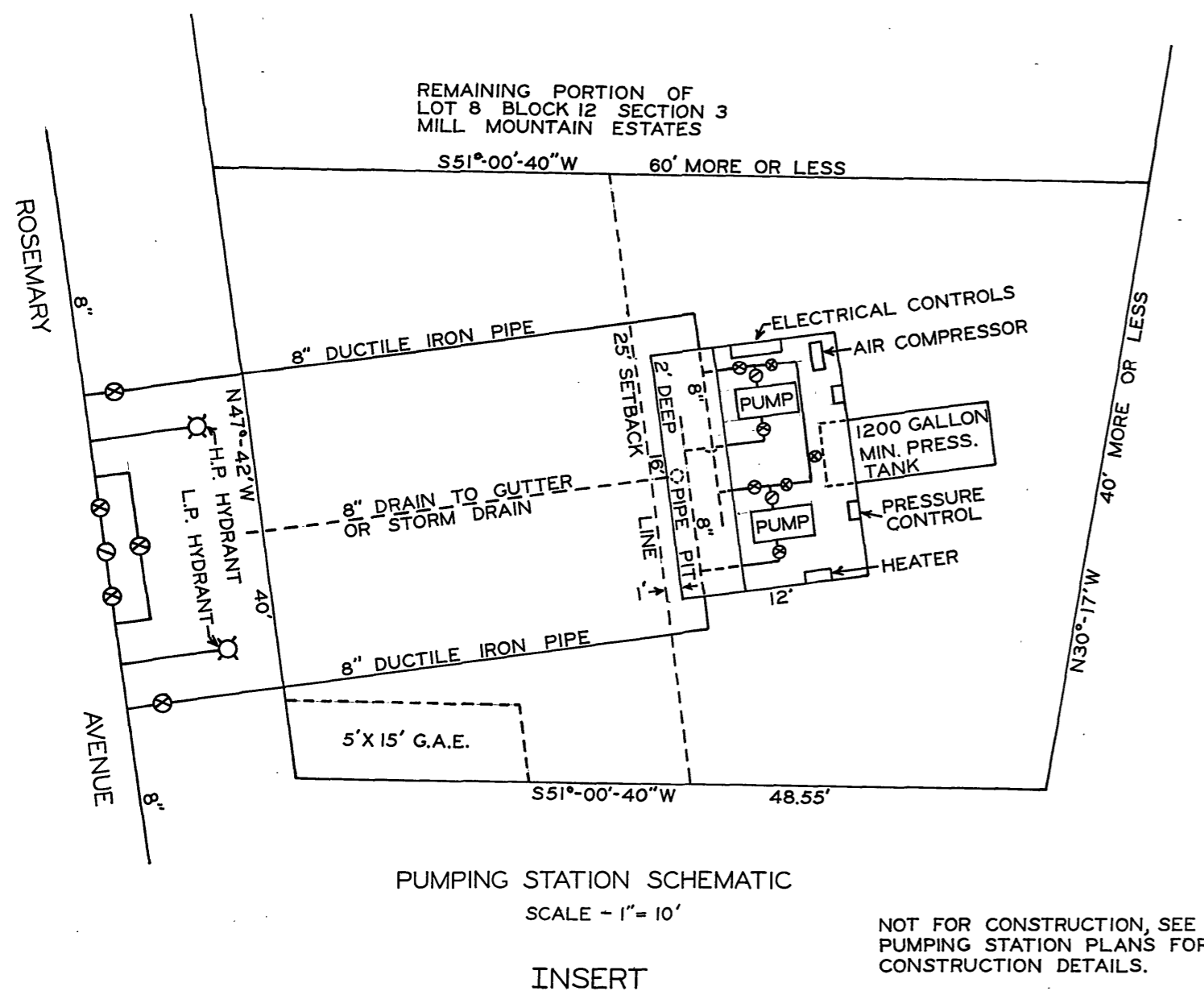


I LOT 40 FT. WIDE X 50 FT. DEEP MORE OR LESS.

II BUILDING	<p>16 FT. WIDE X 12 FT. LONG X 8 FT. MIN. HEIGHT, 6 IN. CONCRETE FLOOR ON 8 INCHES OF COMPACTED SUBGRADE WITH 2 FT. DEEP AND 3 FT.-6 IN. WIDE DRAINED PIPE PIT COVERED WITH GRATING. ELECTRICAL CONDUITS IN SLAB AND/OR WALLS.</p> <p>A-ROOF WITH FELT AND ASPHALT SHINGLE COVERING. WALL WITH CONCRETE BLOCK, BRICK FACE FRONT, ALUMINUM SIDING BACK AND SIDES, INSULATED.</p> <p>OVERHEAD LIGHTS WITH TOGGLE SWITCH AT DOOR. 110 VOLT ELECTRICAL RECEPTORS IN ACCORDANCE WITH ELECTRICAL CODE, BUT NOT LESS THAN FOUR IN NUMBER.</p> <p>ONE DOOR AND TWO WINDOWS IN FRONT AND ONE WINDOW EACH SIDE.</p>
-------------	---

III EQUIPMENT

PUMPS:
1 EA. HORIZONTAL, SINGLE STAGE, CENTRIFUGAL PUMP 75 G.P.M. @ 220 FT. LIFT, 220 VOLT SINGLE PHASE ON 6 INCH RAISED PAD.
1 EA. HORIZONTAL, SINGLE STAGE CENTRIFUGAL PUMP 100 G.P.M. @ 220 FT. LIFT, 220 VOLT SINGLE PHASE ON 6 INCH RAISED PAD.
PUMP CONTROL BY PRESSURE AND MERCURY SWITCH
ELECTRICAL SWITCH FOR PUMPS TO PERMIT EITHER PUMP OR BOTH PUMPS TO BE CUT OFF MANUALLY OR RUN AUTOMATICALLY FROM PRESSURE CONTROLS.
PUMP SUCTION 120 - 26 PSI
PUMP DISCHARGE AND CONTROL, ON-105 PSI OFF 120 PSI. ADJUSTABLE
TANK:
1200 GAL. MIN. CAPACITY PROTRUDING 2 FT. MAXIMUM INSIDE BUILDING, W/SIGHT GLASS, PRESSURE RELIEF SET AT 130 PSI (ADJUSTABLE) AIR INJECTION FITTING WITH AIR CHECK VALVE ON TOP OF TANK, APPROX. 4 FT. DIAMETER. PRIME COAT AND TWO FINISH COATS OF ALUMINUM COLOR APPROVED PAINT, TANK ON PEDESTAL ABOVE GROUND.
PRESSURE RECORDING CHART:
INSTALL PRESSURE RECORDING CHART, HONEYWELL NO. 702XI-PI-11-111-74, OR EQUAL 0-200 PSI, DAILY CYCLE.
PIPING:
CAST IRON FLANGED OR COPPER, EXPOSED
AIR COMPRESSOR:
MIN. 1-H.P., 3.7 FREE AIR DELIVERY WITH ADJUSTABLE CUT-OUT UP TO 175 PSI, 220 VOLT AC. MANUAL CONTROL.
HEATER:
AUTOMATIC THERM. CONTROL, 50°F - 80°F, 220 VOLT ELECTRICAL
WINDOW FAN:
18-INCH, 110 VOLT



DATE STARTED				
DATE COMP. AUG 1 1975				
FEET MAIN	SIZE	WALVE	WALL	BOX
1277'	8"			
563'	6"			
417'	3"			
F.H. COMP. _____	2"	1		
F.H. STUB ONLY				
SERV. INS. BY:				
MAINS INS. BY: JAMES LONG				
NO. 34" SERV. INS.				
CITY OR CO.				
DEPT. INSP.				

H. B. Bir
MGR. ROANOKE WATER DEPT.

L. Mammerean
AGENT FOR ROANOKE PLANNING COMM

Sam H. McShane
CITY ENGINEER OF ROANOKE, VA.

Joseph H. Brown
DIRECTOR OF PUBLIC WORKS

10/24/72
DATE

DATE
10/24/72
DATE

DATE: 24 Oct 1972

DATE
24 Oct 72
DATE

REVISÉD OCT. 22, 1973

Rosemary Pumping Station
WATER DEPARTMENT
CITY OF ROANOKE, VA.
MILL MOUNTAIN ESTATES
SECTION NO. 3
SCALE - 1" = 100'
DRAWN BY C.A.H. OCT. 23, 1972
DIST. MAP 419 72-53