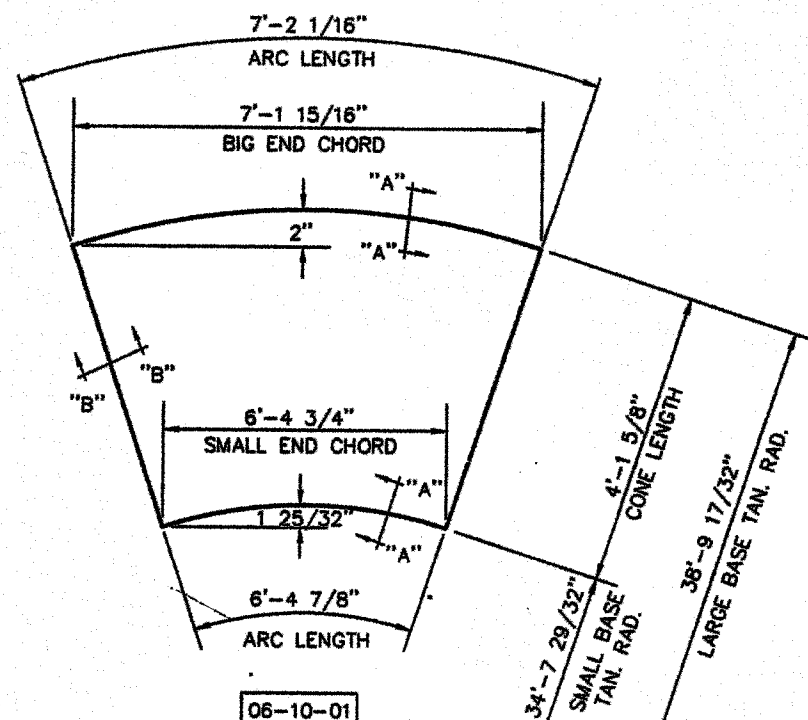
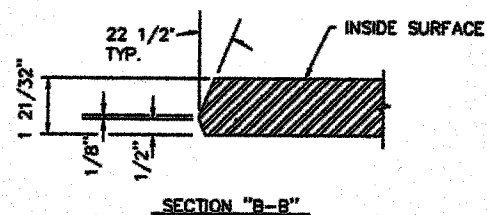
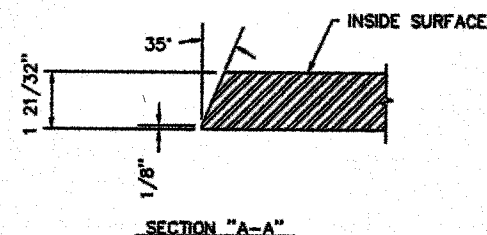
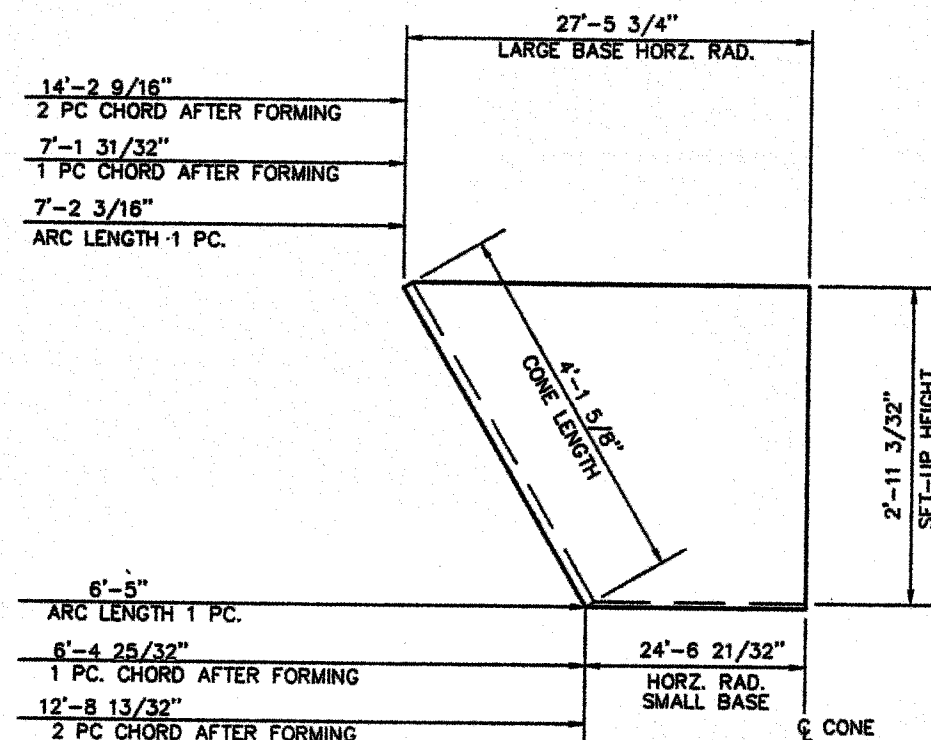


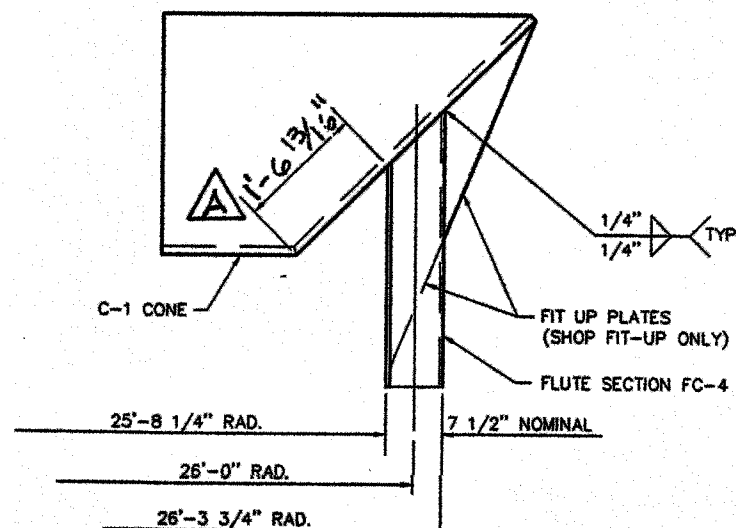
BILL OF MATERIAL					
SUB-ASS'Y NO.	PART NO.	QUANTITY	DESCRIPTION	MATERIAL REQ'D.	PC. WT.
ITEMS LISTED BELOW ARE SHIPPED SEPARATELY					
	06-10-01	24	CONE "C-1" (SHIP W/ 03-CF-01)	1 21/32" PL.	1910
	06-10-02	48	Z-BAR ("C-1" TO TAIL CONNECTION)	1/4" PL.	45,840
	06-10-03	48	Z-BAR ("C-1" TO "C-2" CONNECTION)	3/4" PL.	
	06-10-04	24	FIT-UP PLATE	1/4" PL. (FOR SHOP USE ONLY - DO NOT SHIP)	



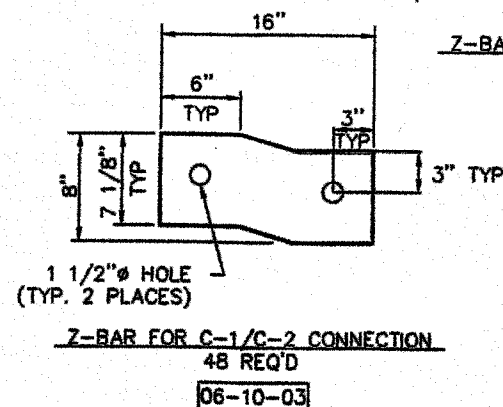
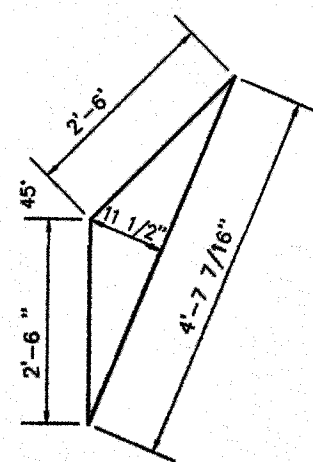
CONE C-1 PIECE DIMENSIONS BEFORE FORMING
 PLATE THICKNESS = 1 21/32"
 ALL DIMENSIONS ON CENTERLINE OF PLATE
 24 SEGMENTS REQUIRED (1910 # PER SEGMENT)
 PIECE DIMENSIONS ALLOW FOR 1/8" WELD GAP



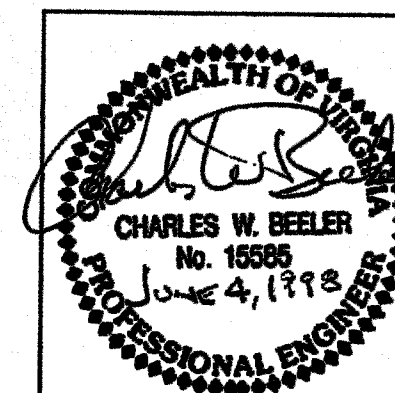
CONE C-1 DIMENSIONS AFTER FORMING
 ALL DIMENSIONS ON OUTSIDE OF PLATE
 24 PCS REQUIRED 1910 # PER PC
 SHIP IN 12 PCS. (CONE & FLUTE ASS'Y)
 SHPG. WT. - 4360 lbs. EA. PC.



CONE/FLUTE WELDMENT
 ASSEMBLE (2) CONE SEGMENTS
 (2) SHORT FLUTE SEGMENTS
 SHIPPING WEIGHT = 4360 lbs.



NOTE:
 SEE DRAWING E-4291 04
 FOR CONE WELDING DETAIL
 SEE DRAWING E-4291 03
 FOR FLUTE DETAILS



A PLN 7-6 AS NOTED			
REV.	BY:	DATE	REMARKS
CALDWELL TANKS, INC.			
LOUISVILLE, KY			
BOTETOURT COUNTY, VA			
BY:	BAW/VTB	TITLE:	TANK CONE C-1 DETAILS
DATE:	4-98	DRAWING NO.:	E-4291 06