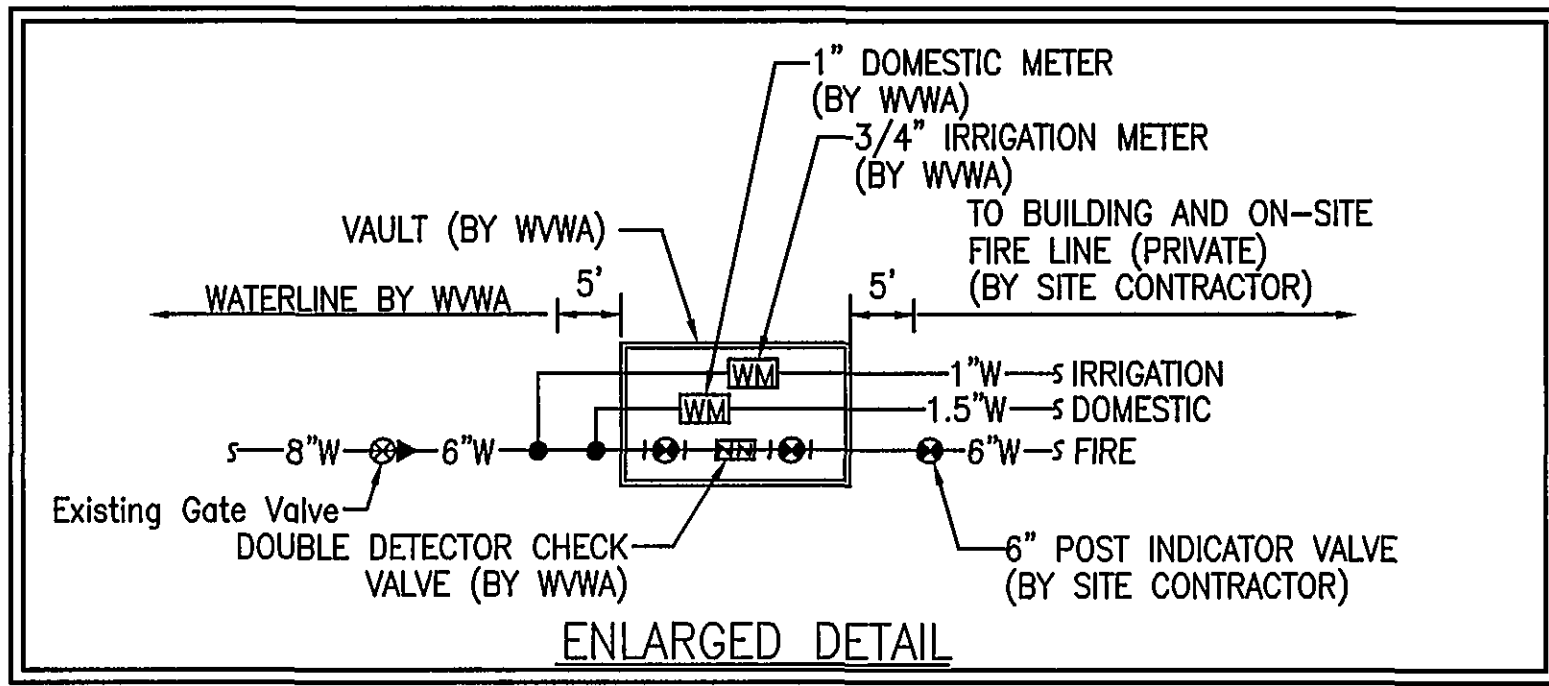


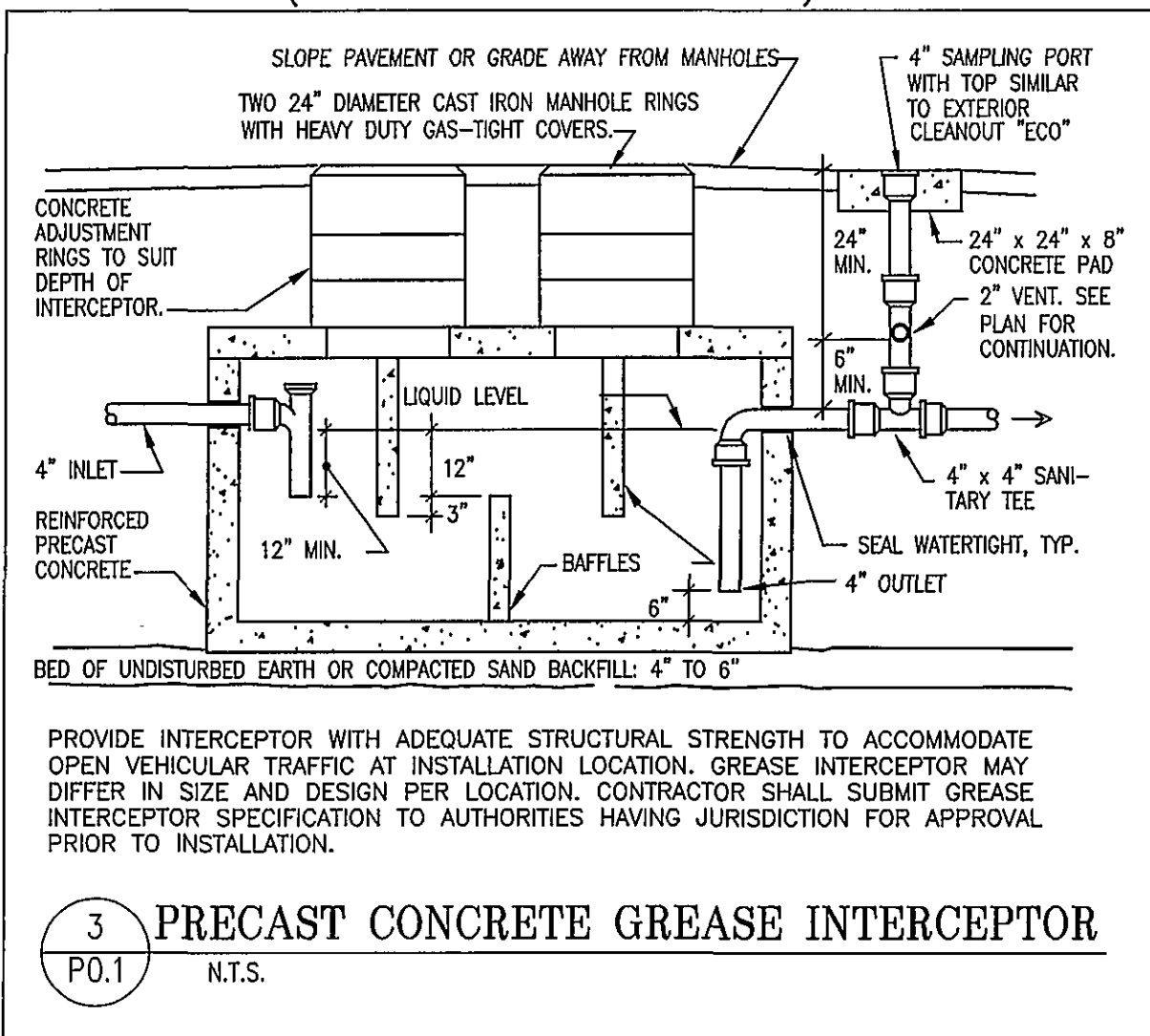
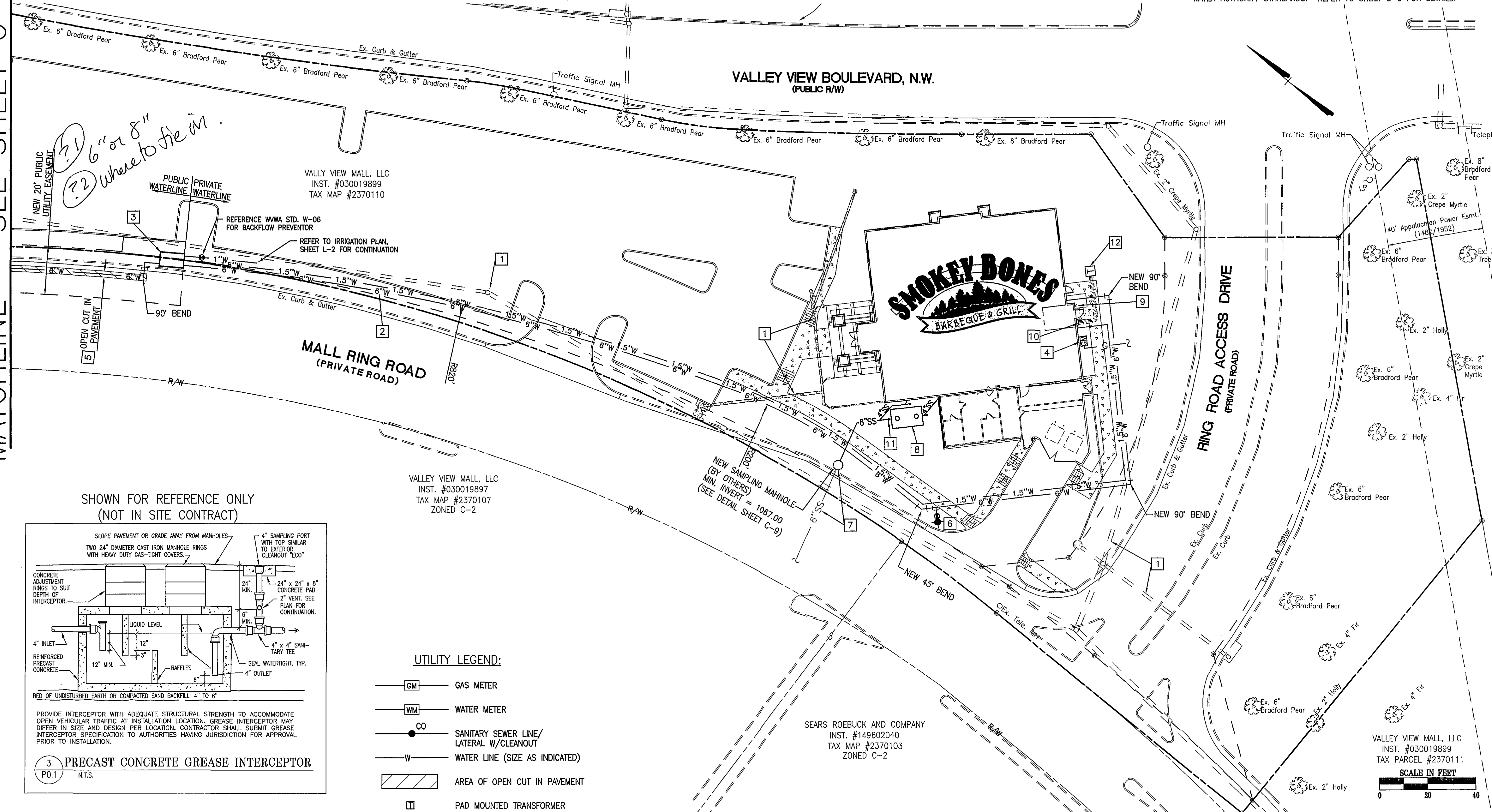
MATCHLINE - SEE SHEET C-9



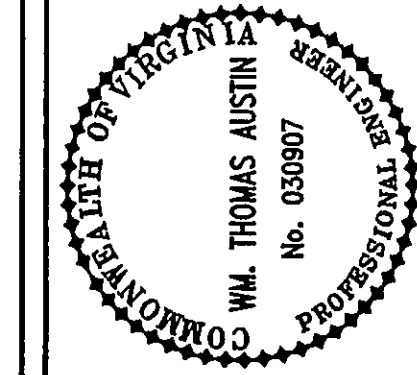
PER THE WWA AVAILABILITY LETTER #04-520, DATED JULY 13, 2004, THE WATER AND SEWER MAIN EXTENSIONS WILL BE DONE BY OTHERS.

- KEYNOTES:**
- EXISTING AND NEW STORM DRAIN SHOWN HEREON FOR INFORMATION ONLY.
 - NEW 6" WATER MAIN (FIRE) BY SITE CONTRACTOR.
 - NEW WATER SERVICE VAULT. WESTERN VIRGINIA WATER AUTHORITY TO TAP MAIN AND PROVIDE AND INSTALL WATER SERVICE VAULT. METER BOX, METER SETTING, DOUBLE DETECTOR CHECK VALVE, AND METER TO BE PROVIDED AND INSTALLED BY WESTERN VIRGINIA WATER AUTHORITY. SITE CONTRACTOR TO EXTEND 6" FIRE LINE, 1.5" DOMESTIC, AND 1" IRRIGATION FROM VAULT TO BUILDING PER WWA CONSTRUCTION GUIDELINES. SEE ENLARGED DETAIL THIS SHEET FOR ADDITIONAL INFORMATION.
 - GAS METER AND SERVICE LINE BY OTHERS. COORDINATE LOCATION WITH GAS COMPANY AND BUILDING PLANS.
 - OPEN CUT IN PAVEMENT. SEE UTILITY TRENCH REPAIR IN PAVEMENT DETAILS (G-02) ON SHEET C-8.
 - NEW PRIVATE FIRE HYDRANT AND ASSEMBLY. CONTRACTOR IS RESPONSIBLE FOR COORDINATING BURY DEPTH WITH OTHER UTILITIES.
 - NEW SAMPLING MANHOLE AND SEWERLINE TO EXISTING SEWER MAIN ($\pm 510'$) TO BE INSTALLED BY OTHERS.
 - NEW 2500 GALLON GREASE INTERCEPTOR. SEE DETAIL THIS SHEET AND PLUMBING PLANS FOR ADDITIONAL INFORMATION.
 - NEW FIRE DEPARTMENT (FDC) CONNECTION.
 - 4 - 4" DIAMETER PVC CONDUITS FOR ELECTRIC SERVICES. NEW PAD MOUNTED TRANSFORMER TO BE LOCATED AND INSTALLED BY UTILITY COMPANY.
 - NEW SANITARY SEWER CLEANOUT, TYPICAL.
 - APPROXIMATE LOCATION OF TRANSFORMER PAD. EXACT LOCATION TO BE DETERMINED BY POWER COMPANY.

- UTILITY NOTES:**
- CONTRACTOR TO CONFIRM LOCATION & INVERT PRIOR TO INSTALLATION OF NEW SERVICE LINES.
 - CONTRACTOR TO CONTACT THE WESTERN VIRGINIA WATER AUTHORITY (853-5700) PRIOR TO EXTENDING WATER & SEWER SERVICE LINES AND TO COORDINATE THE CONNECTION TO THE EXISTING WATER AND SEWER MAINS.
 - CONTRACTOR SHALL CONSULT WITH AMERICAN ELECTRIC POWER CO. TO DETERMINE SIZE AND EXACT LOCATION OF TRANSFORMER PAD.
 - CLEAN-OUTS IN PAVEMENT OR SIDEWALK SHALL BE SET IN 6" DIAMETER CAST IRON VALVE BOX WITH TOP SET FLUSH WITH FINISHED PAVED GRADE.
 - GAS SERVICE LINE IS SHOWN FOR GENERAL INFORMATION ONLY. EXACT LOCATION TO BE DETERMINED AND INSTALLED BY GAS SERVICE COMPANY.
 - SANITARY SEWER LATERALS SHALL BE INSTALLED AT 2.0% SLOPE (MIN.) FROM POINT OF CONNECTION TO BUILDING.
 - REFER TO BUILDING PLANS FOR EXACT LOCATION OF UTILITY SERVICE CONNECTIONS.
 - ALL WATER AND SEWER WORK SHALL CONFORM TO WESTERN VIRGINIA WATER AUTHORITY STANDARDS. REFER TO SHEET C-9 FOR DETAILS.



- UTILITY LEGEND:**
- GM GAS METER
 - WM WATER METER
 - CO SANITARY SEWER LINE/ LATERAL W/CLEANOUT
 - W WATER LINE (SIZE AS INDICATED)
 - AREA OF OPEN CUT IN PAVEMENT
 - PAD MOUNTED TRANSFORMER



Revisions	Date	Comments
1	2/1/05	REVISED PER CITY OF ROANOKE COMMENTS
2	2/24/05	REVISED PER CITY OF ROANOKE COMMENTS
3	7/7/05	ADD WATERLINE EXTENSION

Issue Date:	DECEMBER 17, 2004
Drawn By:	CZV
Designed By:	CZV
Checked By:	WIA
Date:	12-17-2004

Matthew & Craig
CONSULTING ENGINEERS • SURVEYORS
701 FIRST STREET, S.W.
ROANOKE, VIRGINIA 24016
(540) 345-9342
FAX (540) 345-7691

UTILITY PLAN
CITY OF ROANOKE, VIRGINIA

Vertical Scale: N/A
Horizontal Scale: 1" = 20'
Commission Number: 2369
Sheet No.: C-5

VALLEY VIEW MALL, LLC
INST. #030019899
TAX PARCEL #2370111

