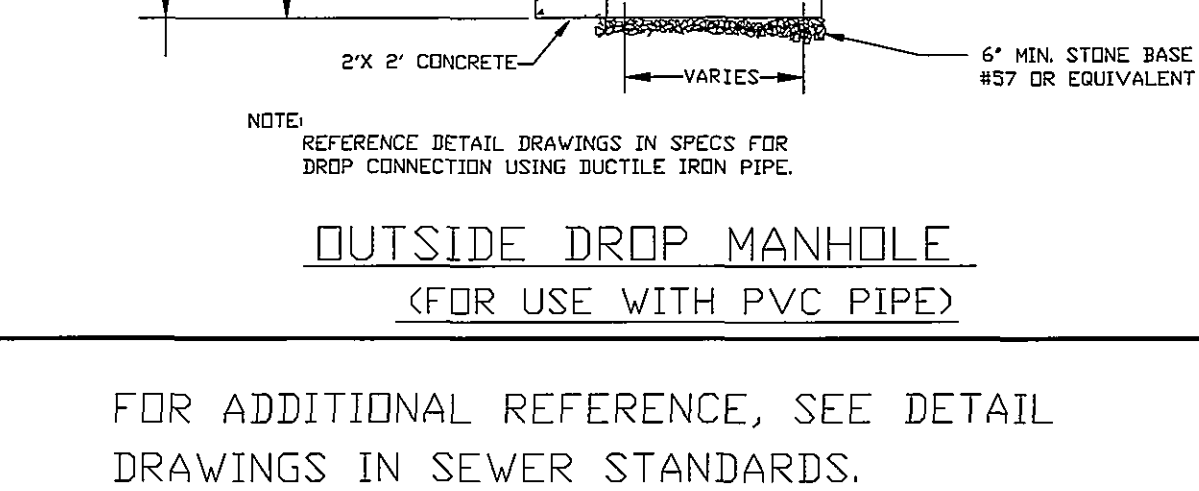
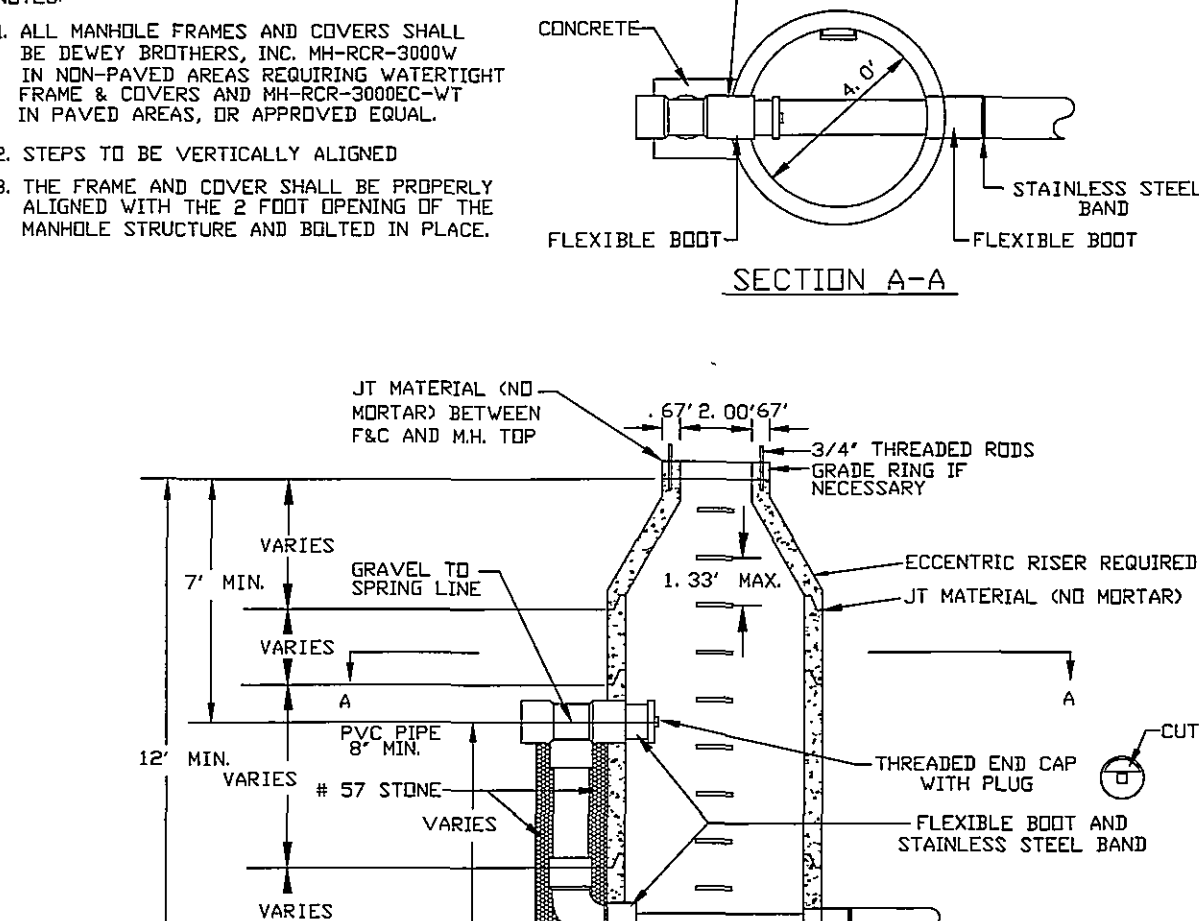
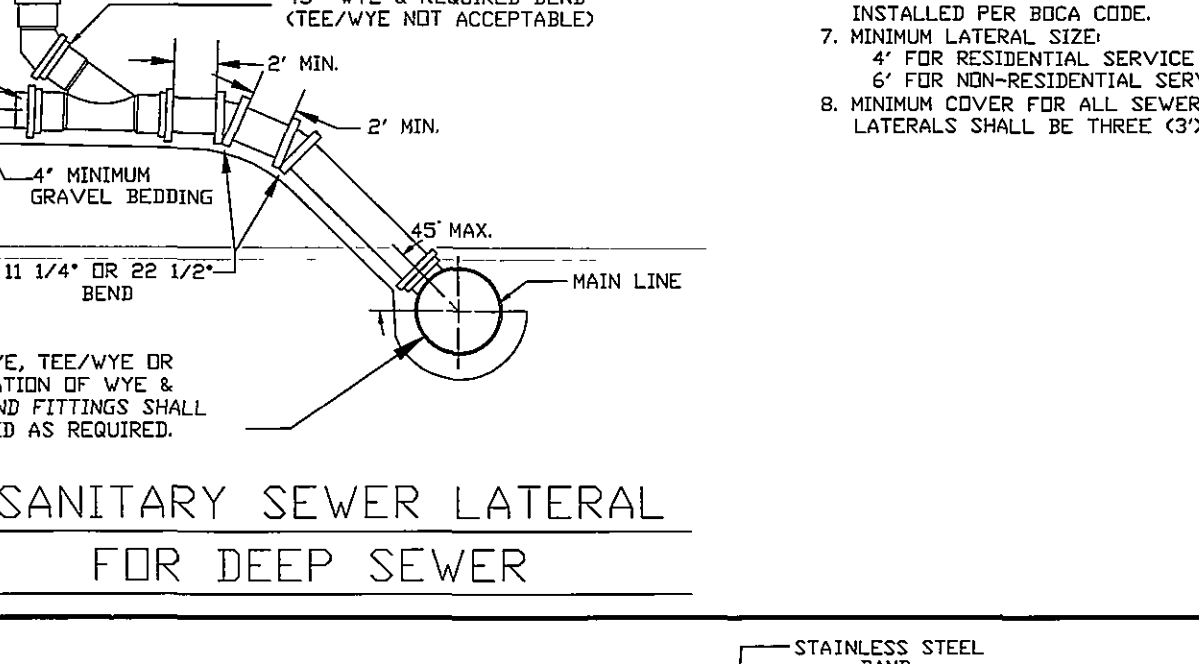
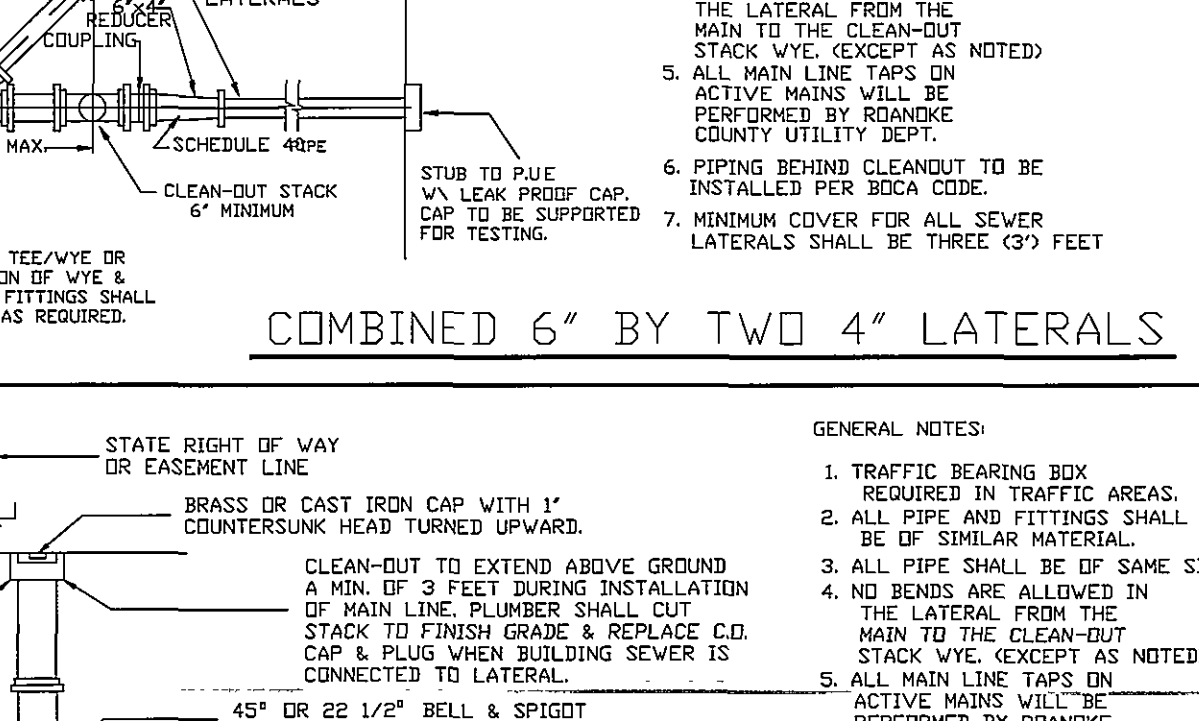
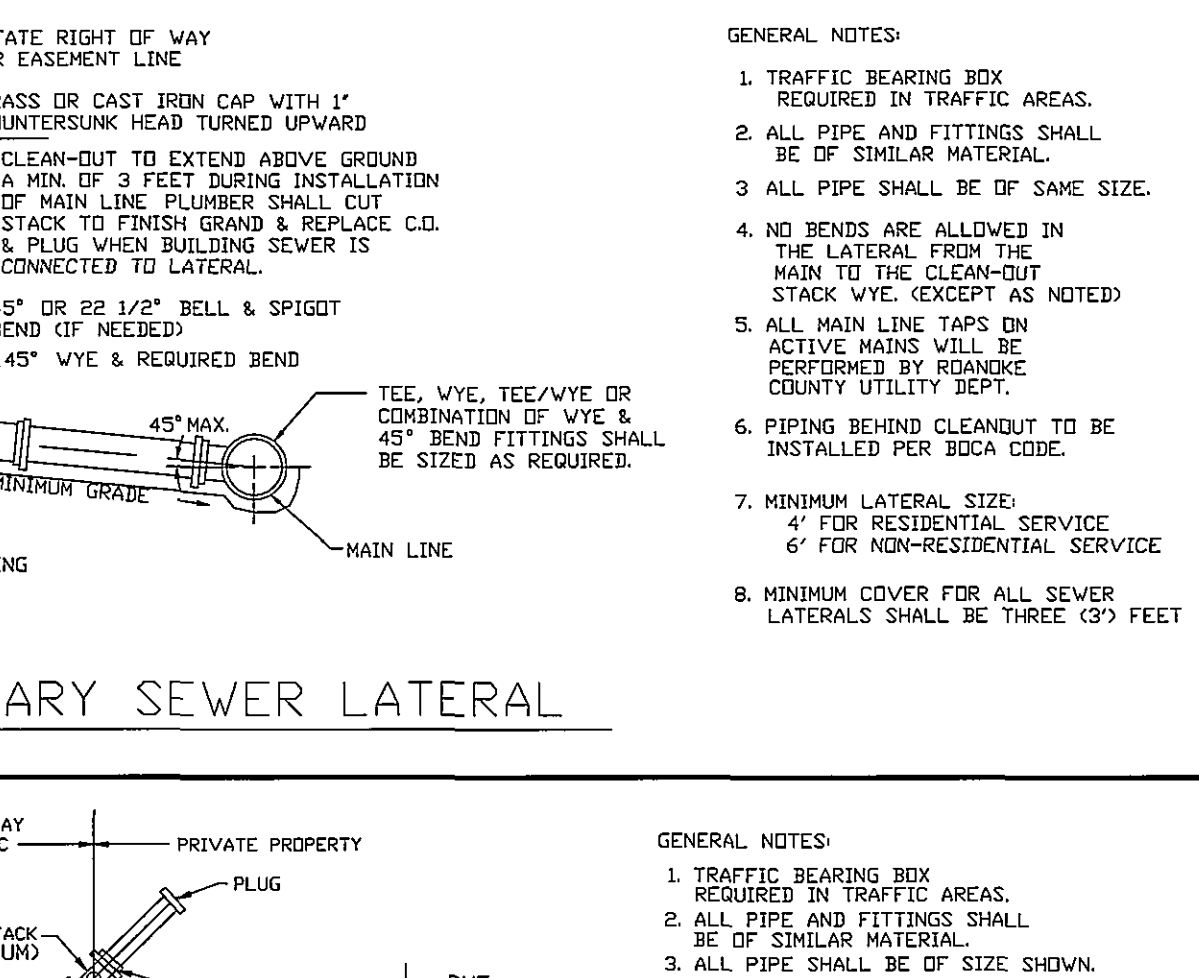
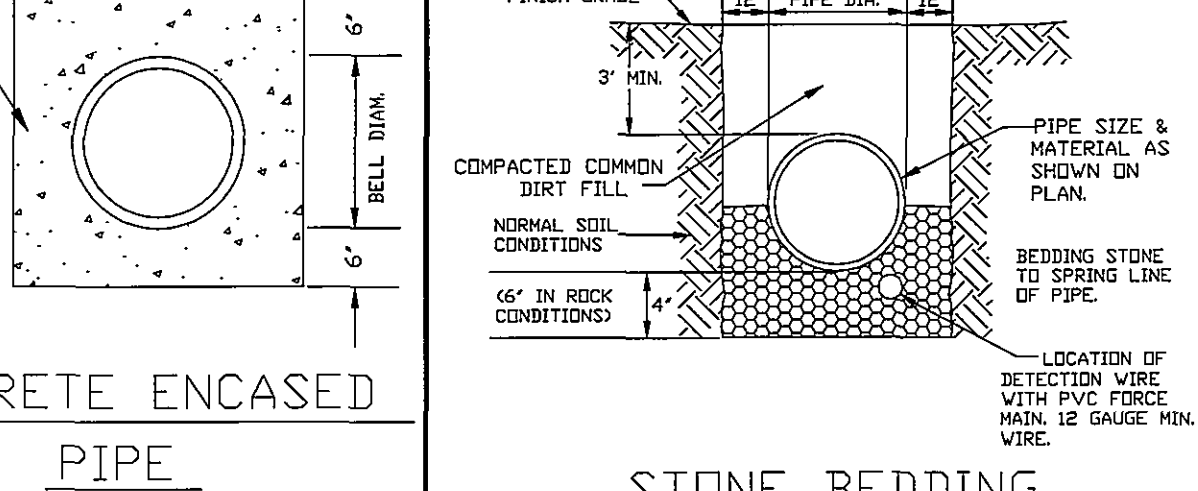
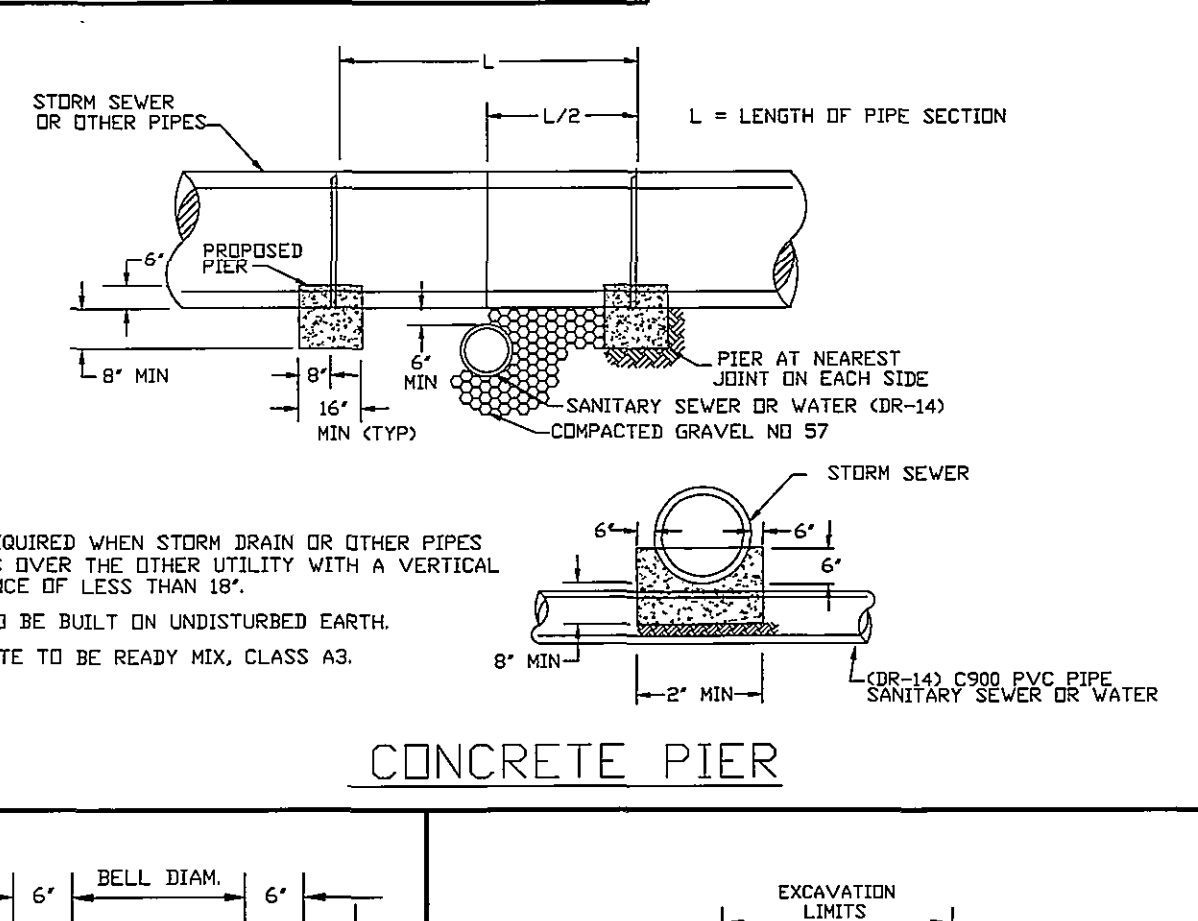
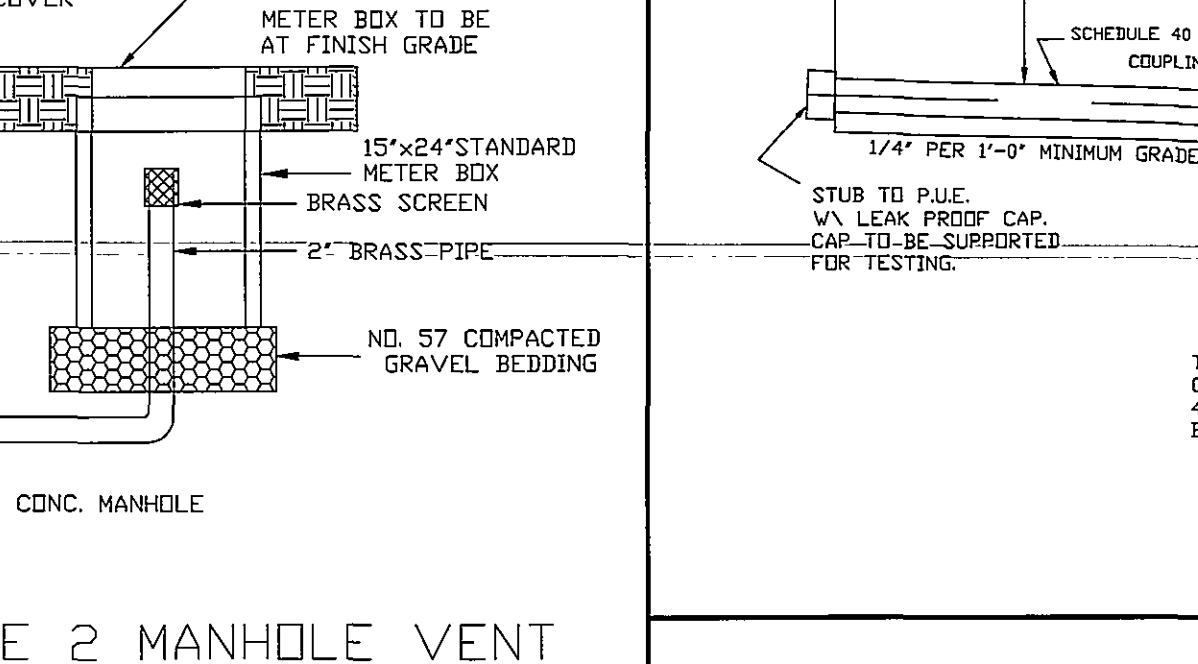
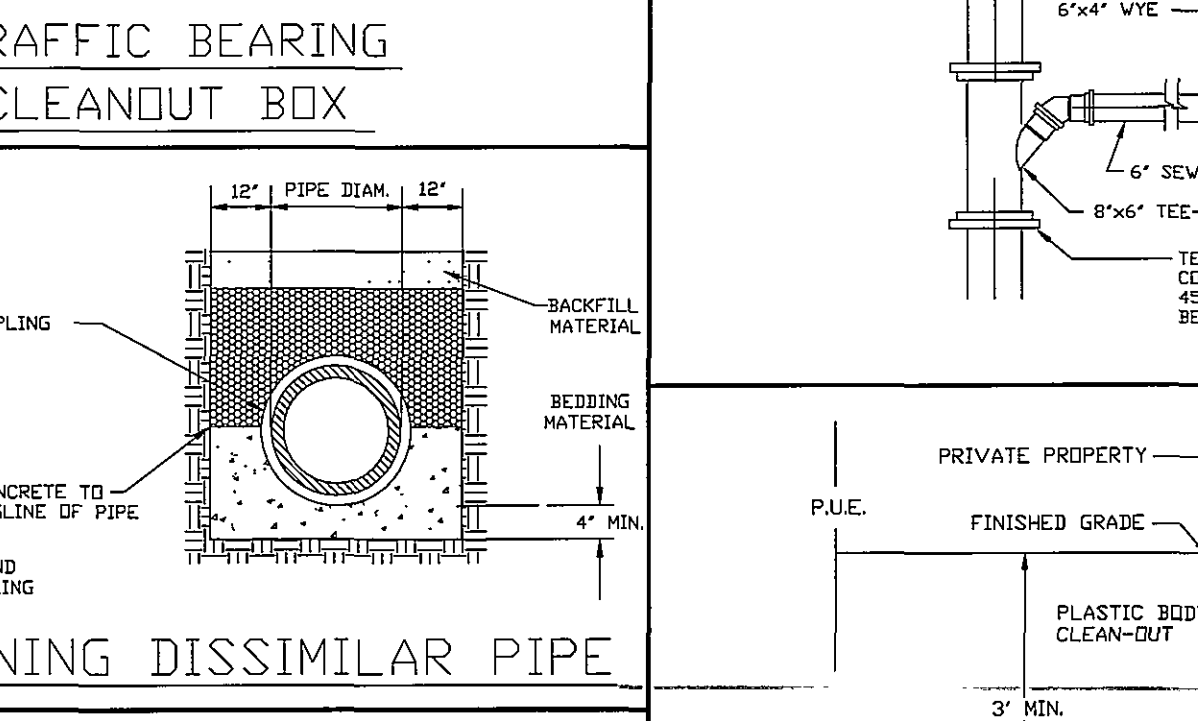
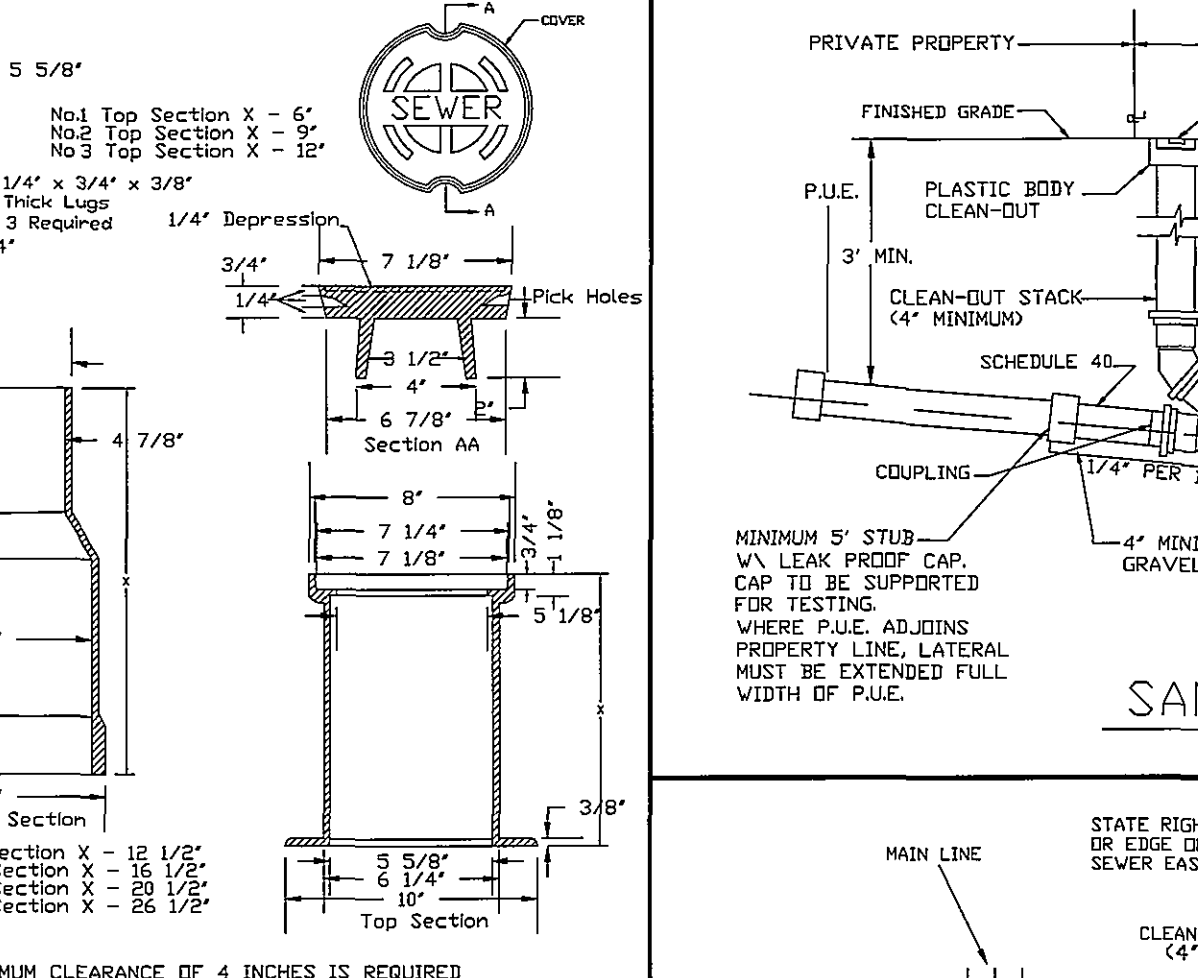
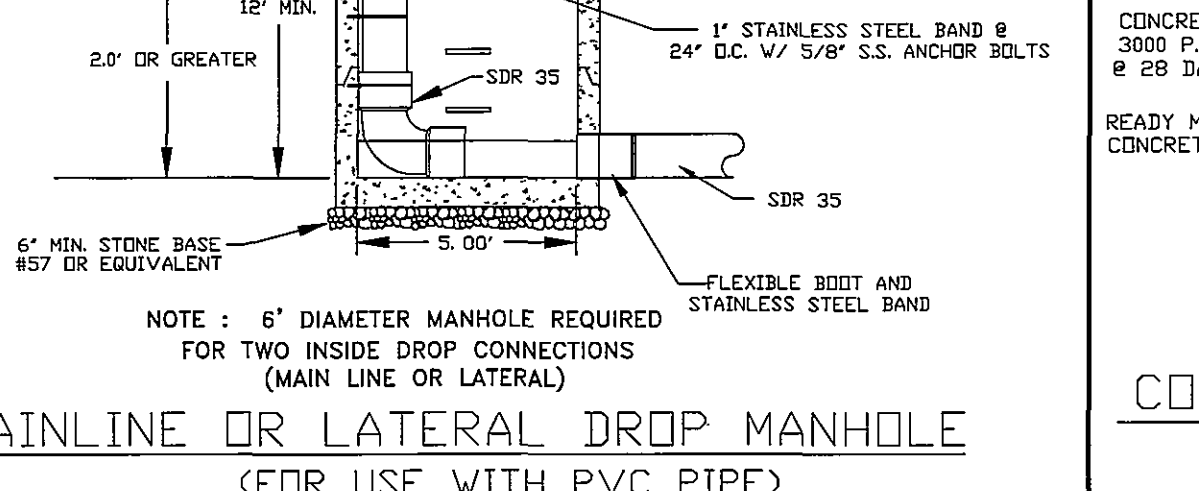
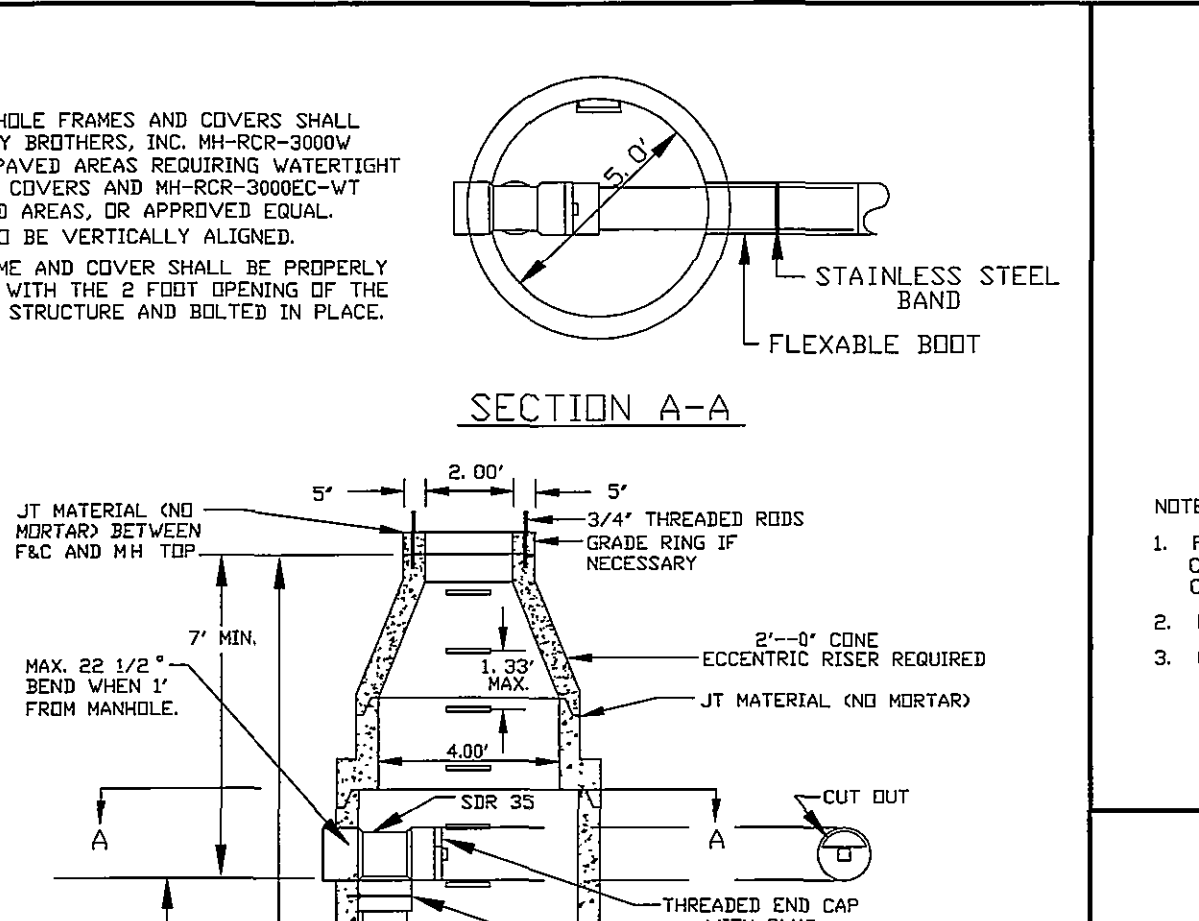
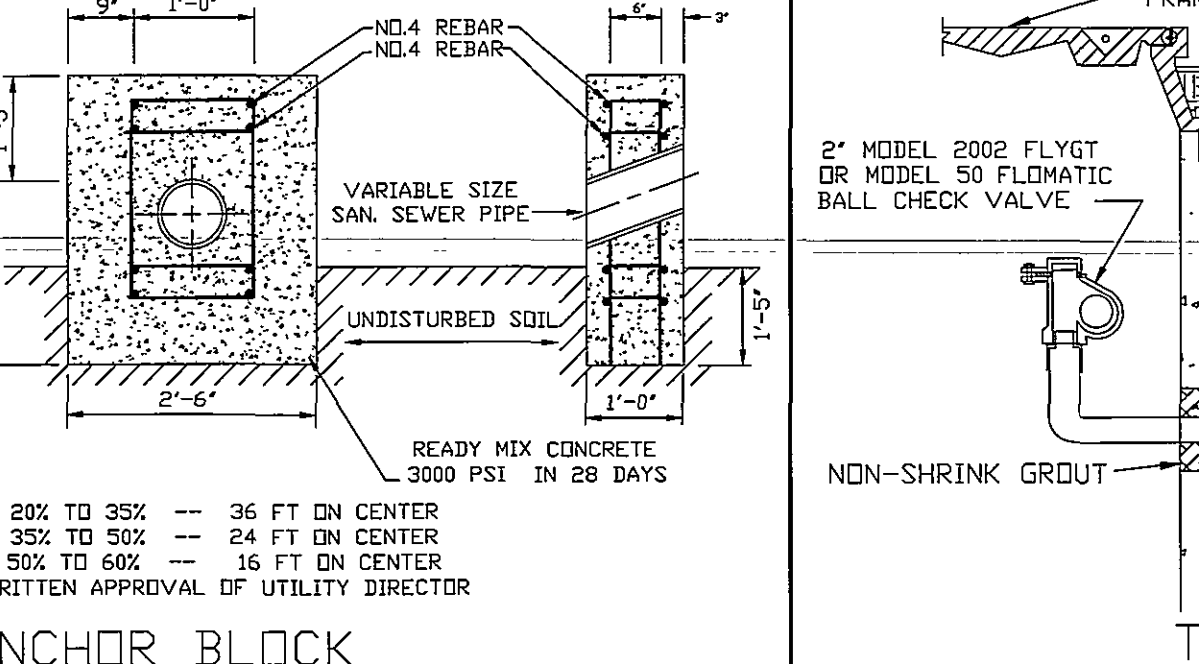
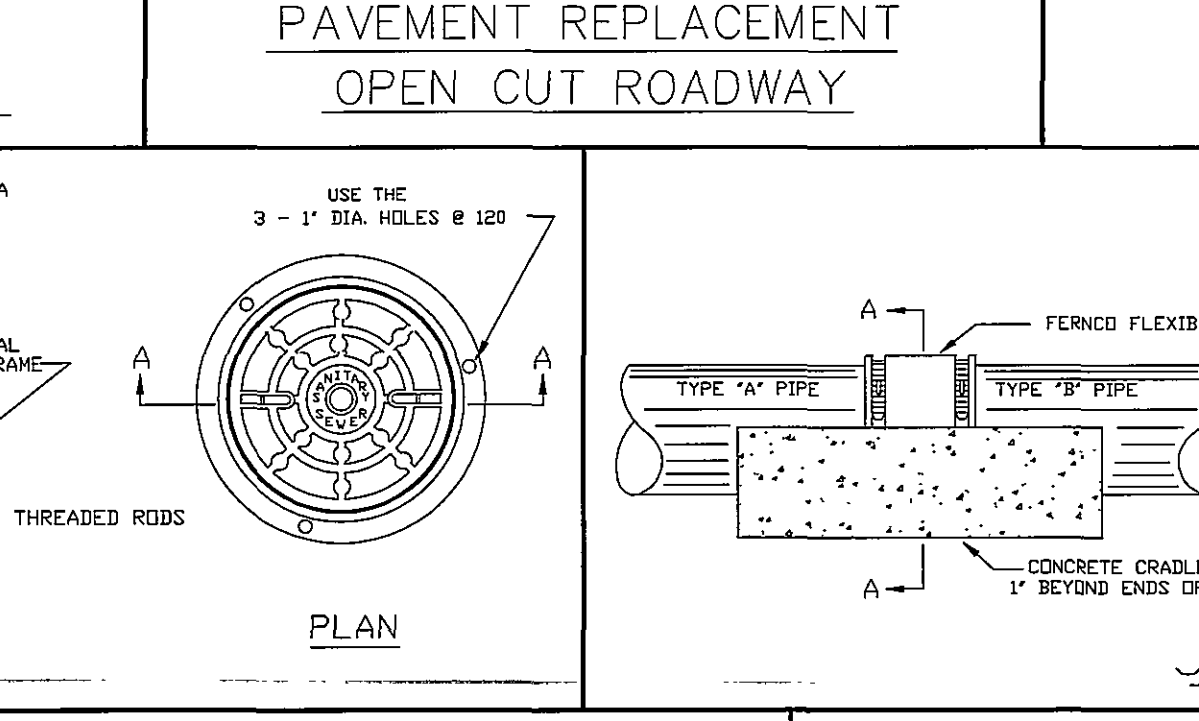
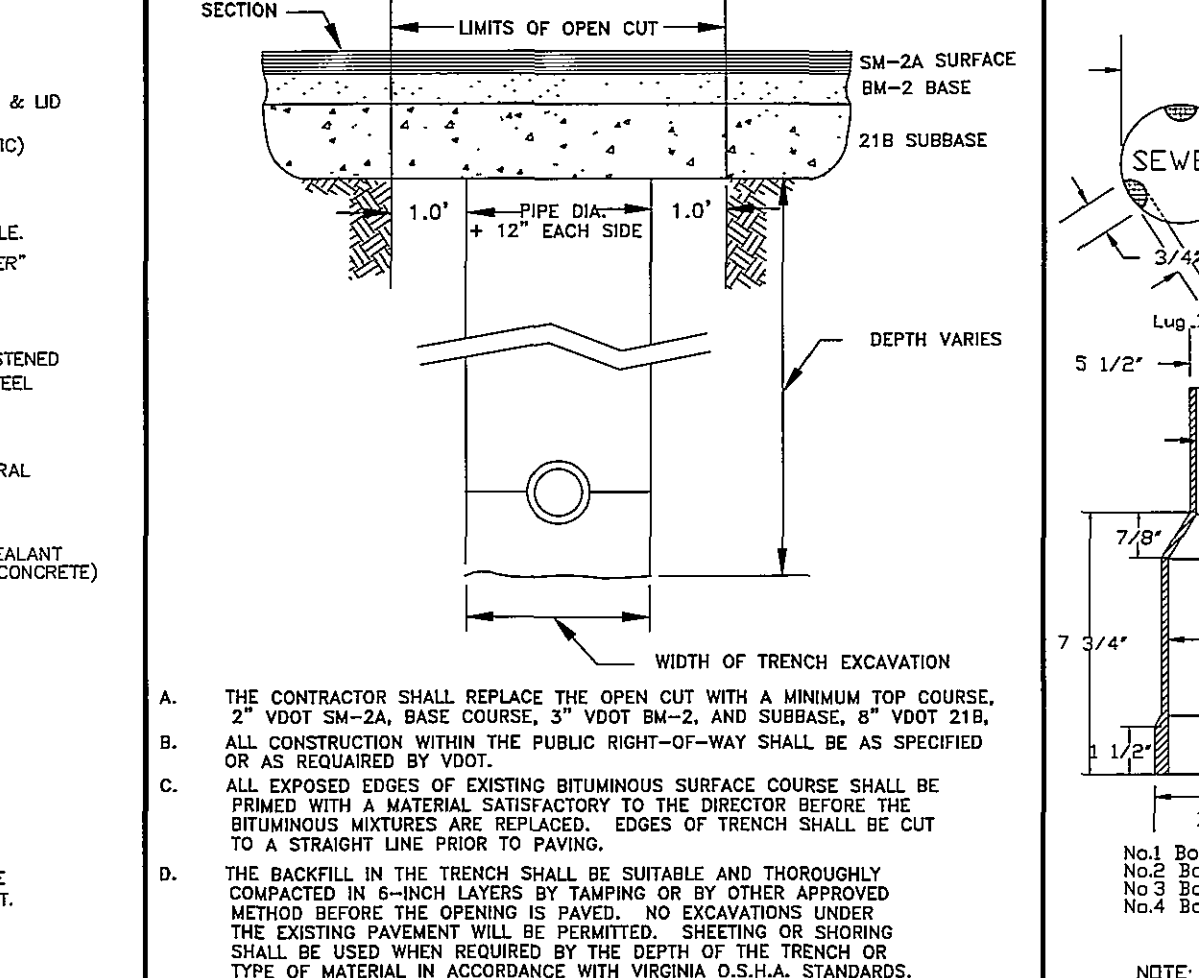
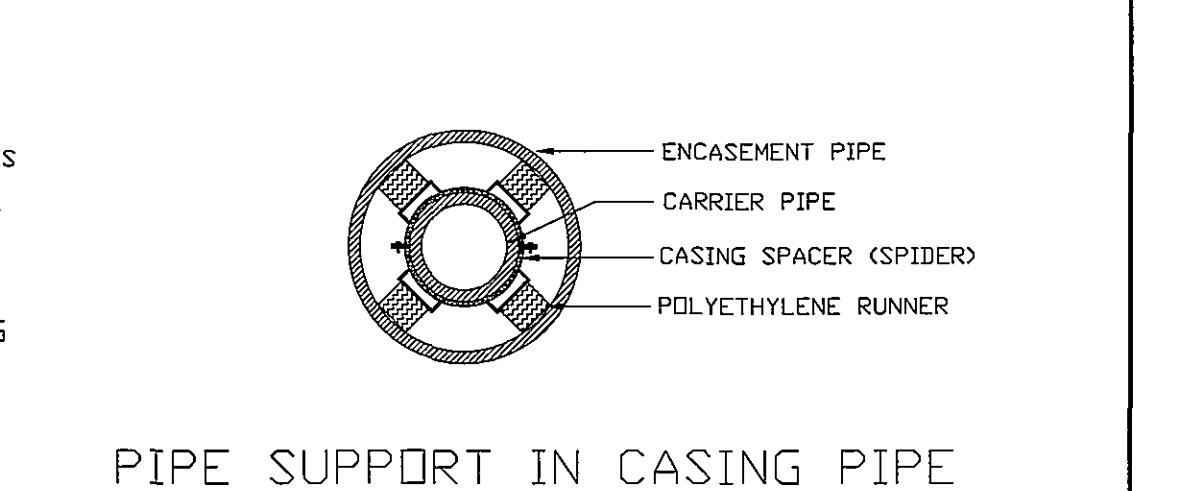
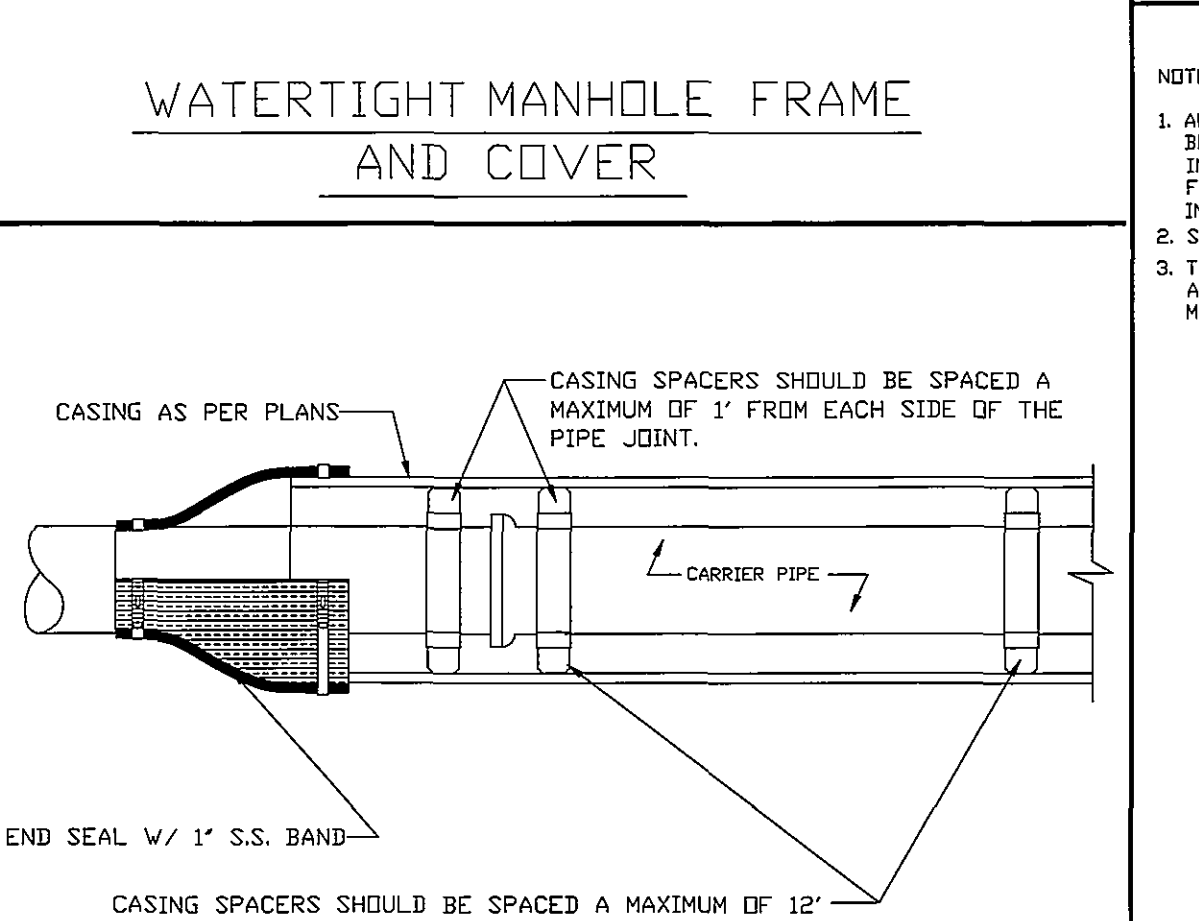
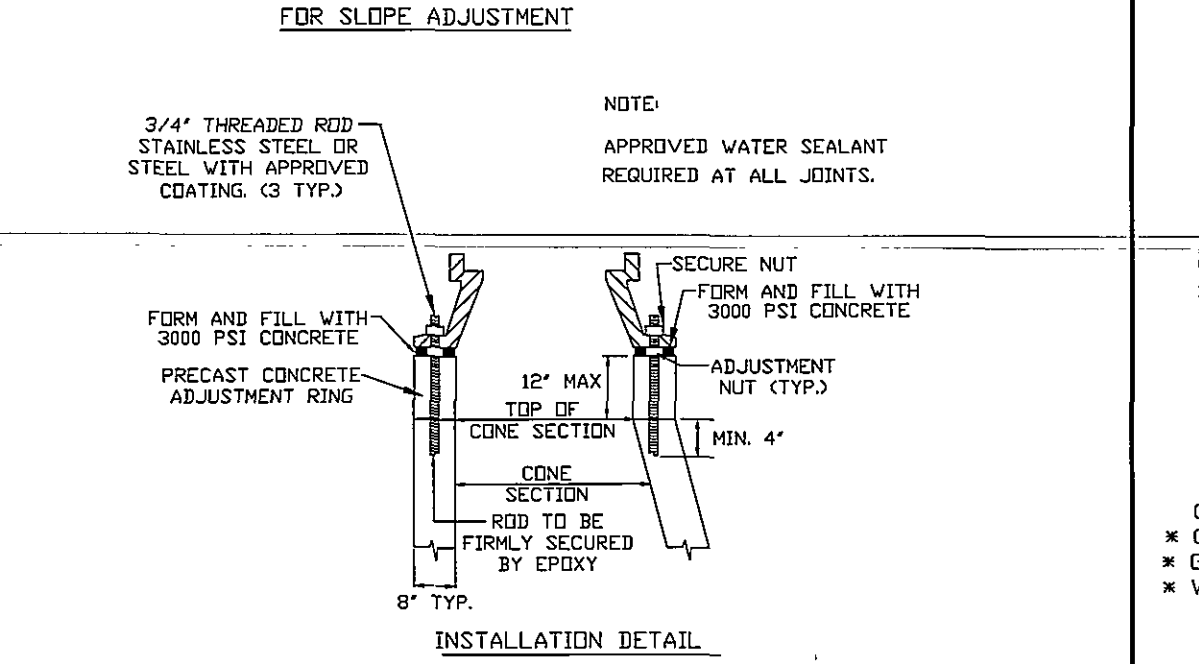
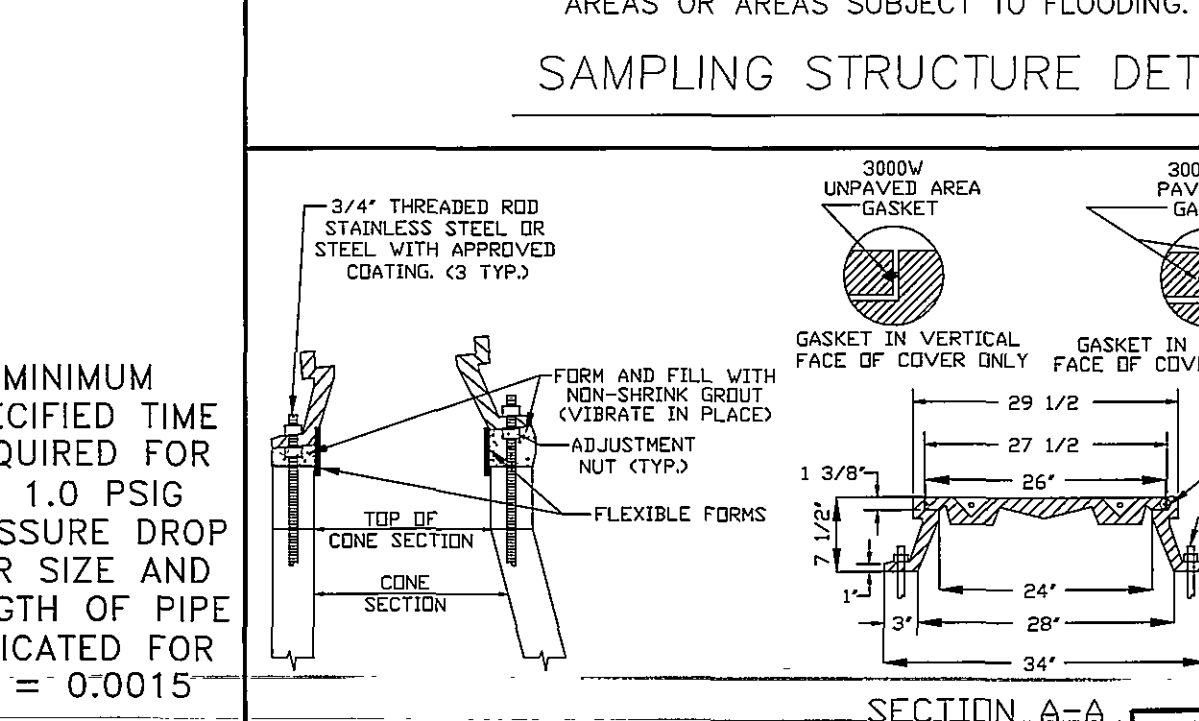
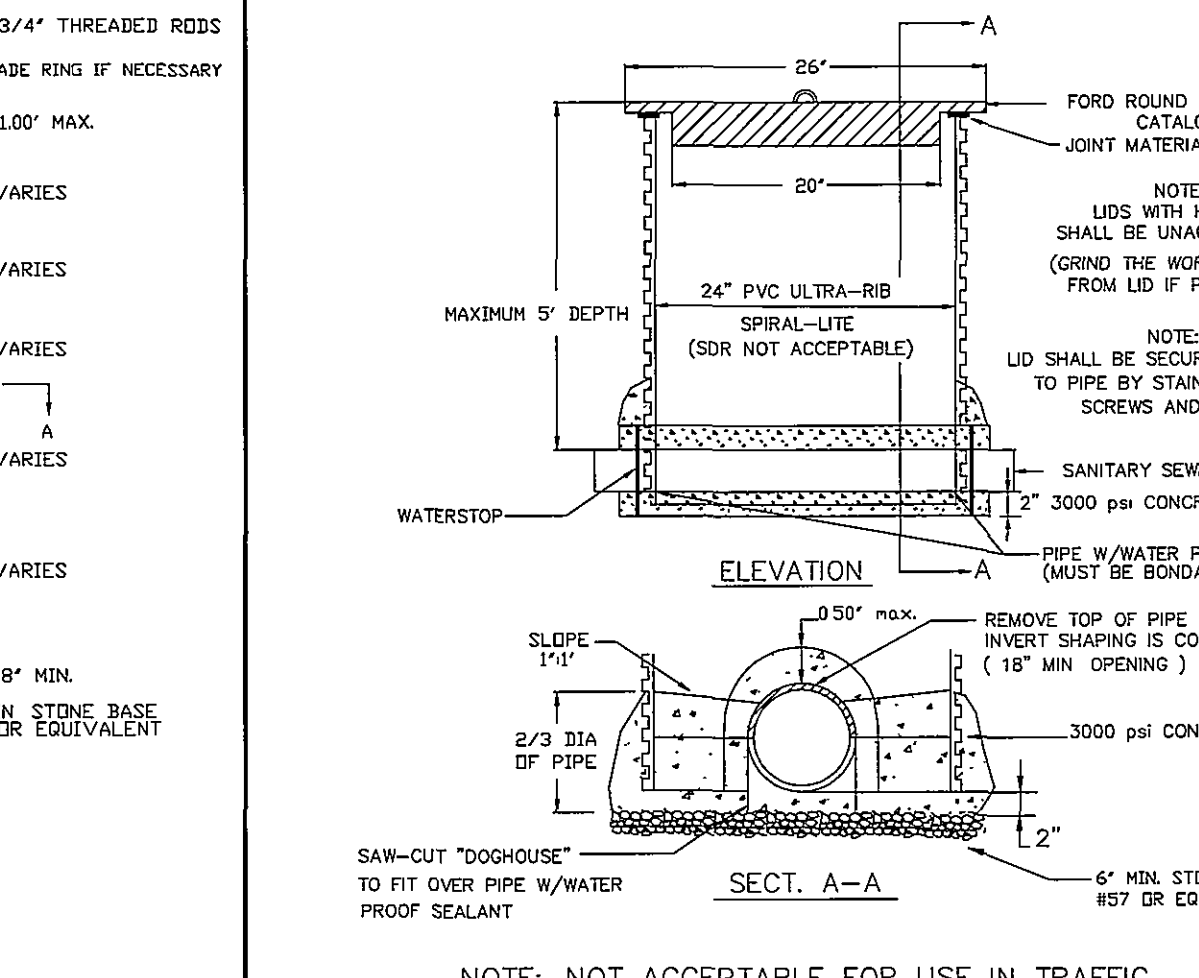
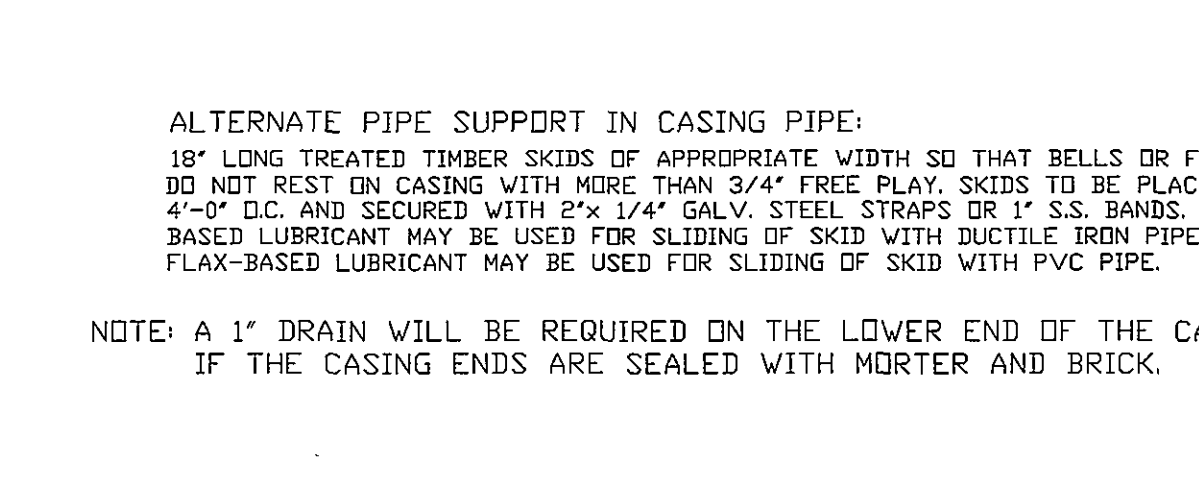
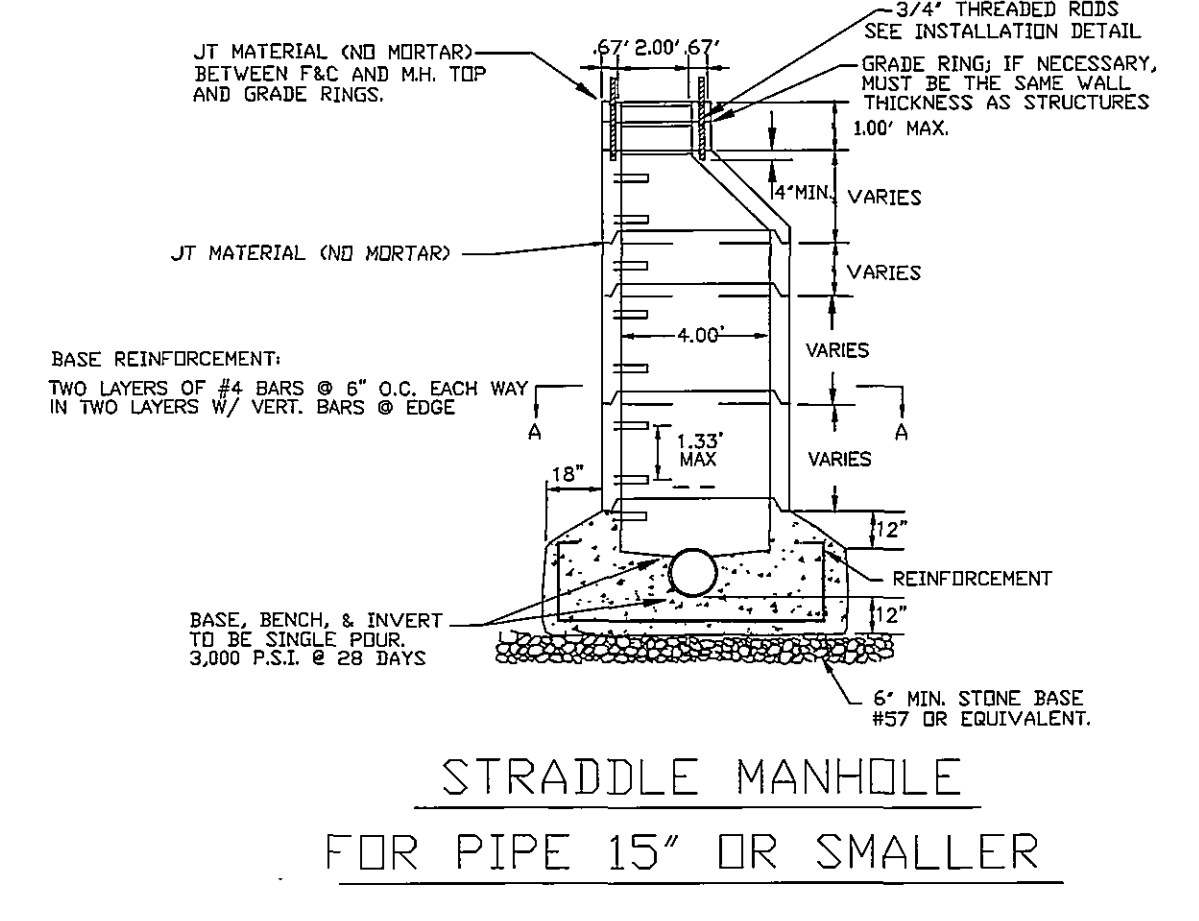
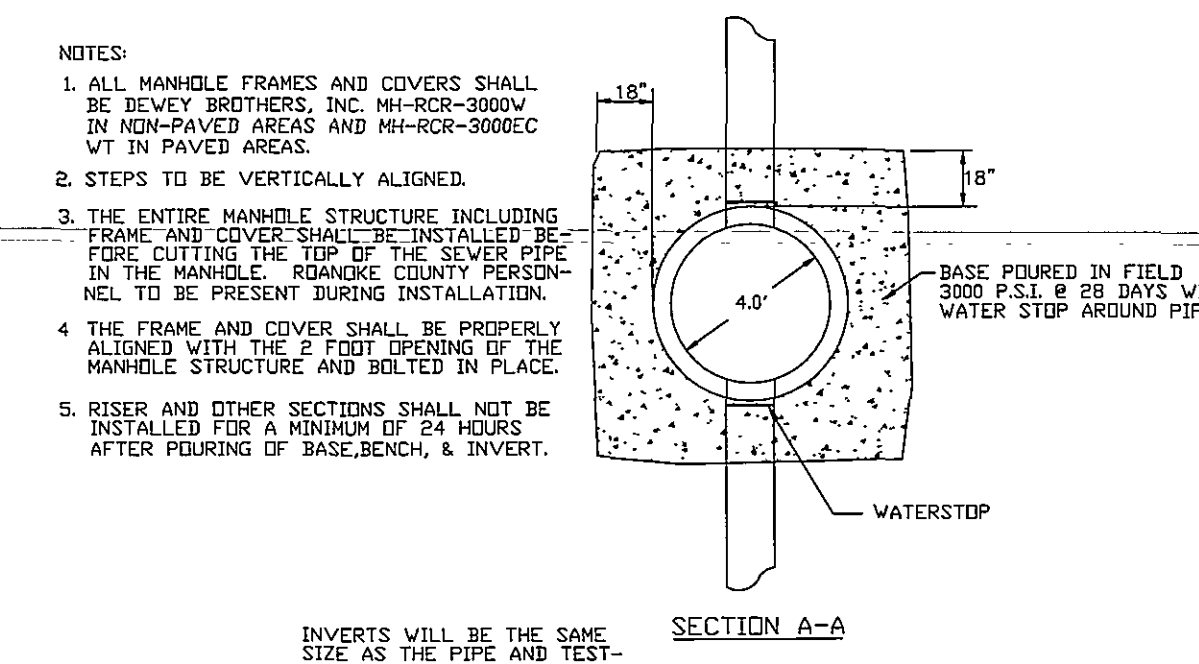


MINIMUM SPECIFIED TIME REQUIRED FOR A 1.0 PSIG PRESSURE DROP FOR SIZE AND LENGTH OF PIPE INDICATED FOR Q = 0.0015

Pipe Diameter (in.)	Min. Time (min)	Length for Min. Time (ft)	Time for Longer Length (min)
4	3.45	597	380 L
6	9.40	398	854 L
8	7.34	298	1,520 L
10	9.26	239	2,374 L
12	11.20	199	3,418 L
15	14.10	159	5,342 L
18	17.00	133	7,692 L
21	19.50	114	10,470 L
24	22.40	99	13,674 L
27	25.30	88	17,306 L
30	28.20	80	21,366 L
33	31.10	72	25,852 L
36	34.00	66	30,798 L



COUNTY OF ROANOKE

DEPARTMENT OF ENGINEERING AND INSPECTIONS

SEWER DETAILS

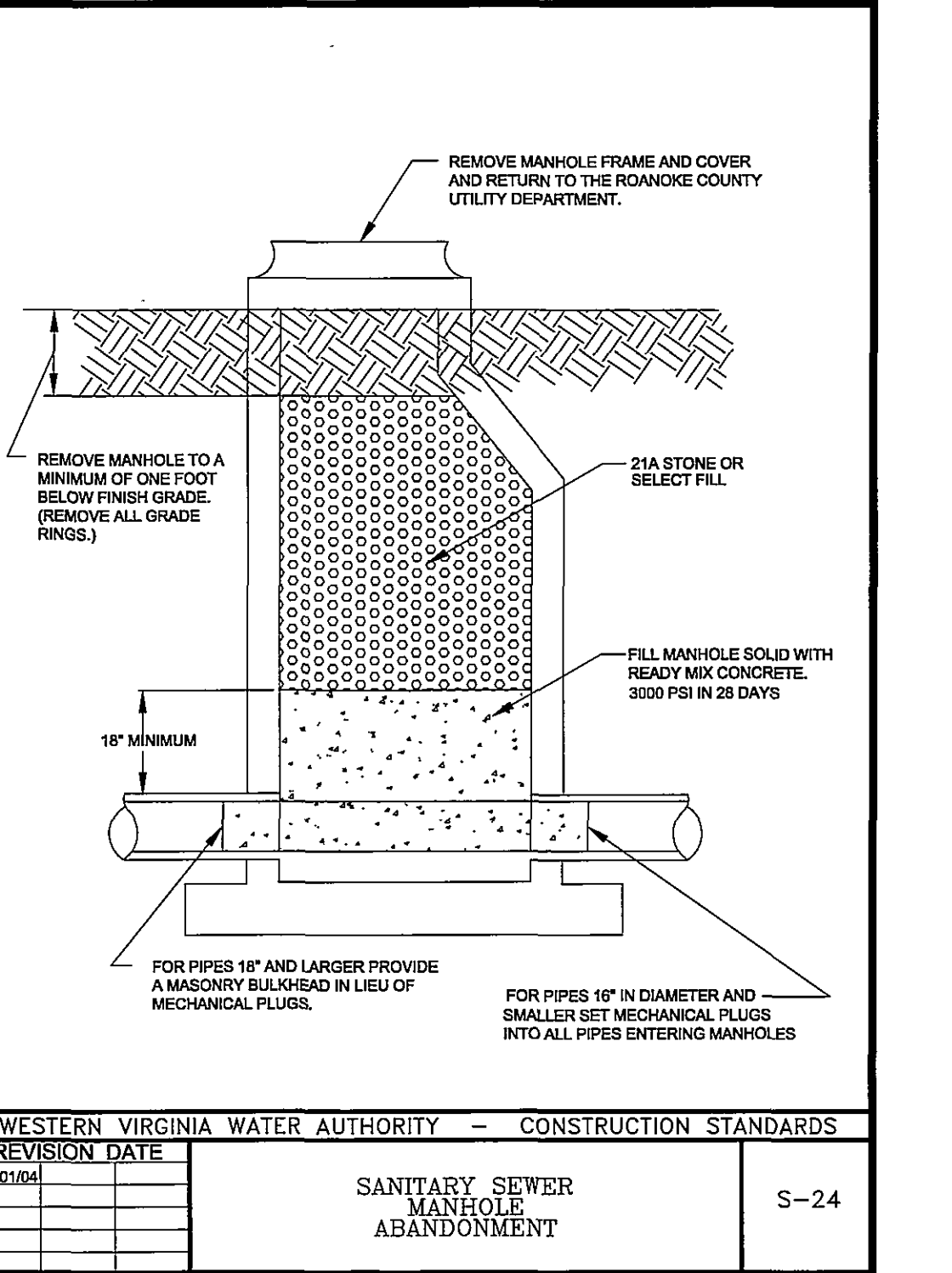
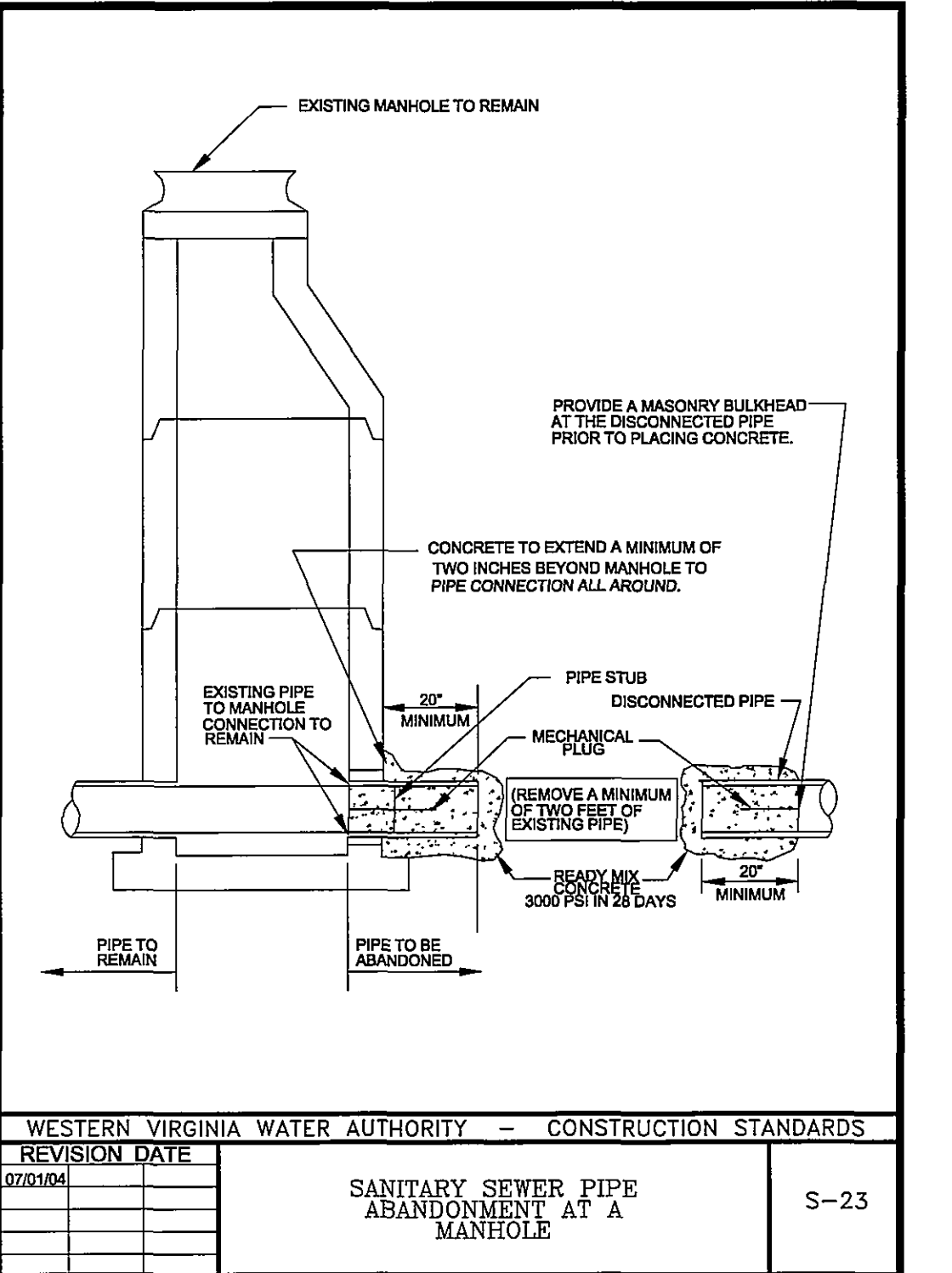
DATE: 12/95

SCALE: NO SCALE

DRAWING BY: ROANOKE COUNTY ENGINEERING DEPT.

DESIGNED BY: ROANOKE COUNTY UTILITY DEPT.

APPROVED BY:



SHEET PLAN FOR ROANOKE COUNTY PUBLIC SAFETY BUILDING ROANOKE COUNTY, VIRGINIA

NORTHROP GRUMMAN

WESTERN VIRGINIA WATER AUTHORITY SEWER DETAIL SHEET

REVISIONS

03/16/05 PER COUNTY COMMENTS

03/29/05 PER COUNTY COMMENTS

04/27/05 PER COUNTY COMMENTS

05/11/05 PER COUNTY COMMENTS

07/25/05 PER COUNTY COMMENTS

11/09/05 PER COUNTY COMMENTS

12/08/05 PER COUNTY COMMENTS

1/16/06 PER VDOT COMMENTS

ISSUED: HURT & PROFFITT NUMBER: 20040857

DRAWN BY: NEAL N. WRIGHT

CHECKED BY: NEAL N. WRIGHT

SCALE: NOT TO SCALE

DRAWING

HURT & PROFFITT INCORPORATED

2524 LARGO DRIVE

LYNCHBURG, VA 24502

804.342.4056 TOLL FREE

434.682.7795 FAX

434.682.0047 FAX

C303

SHEET 16 OF 18