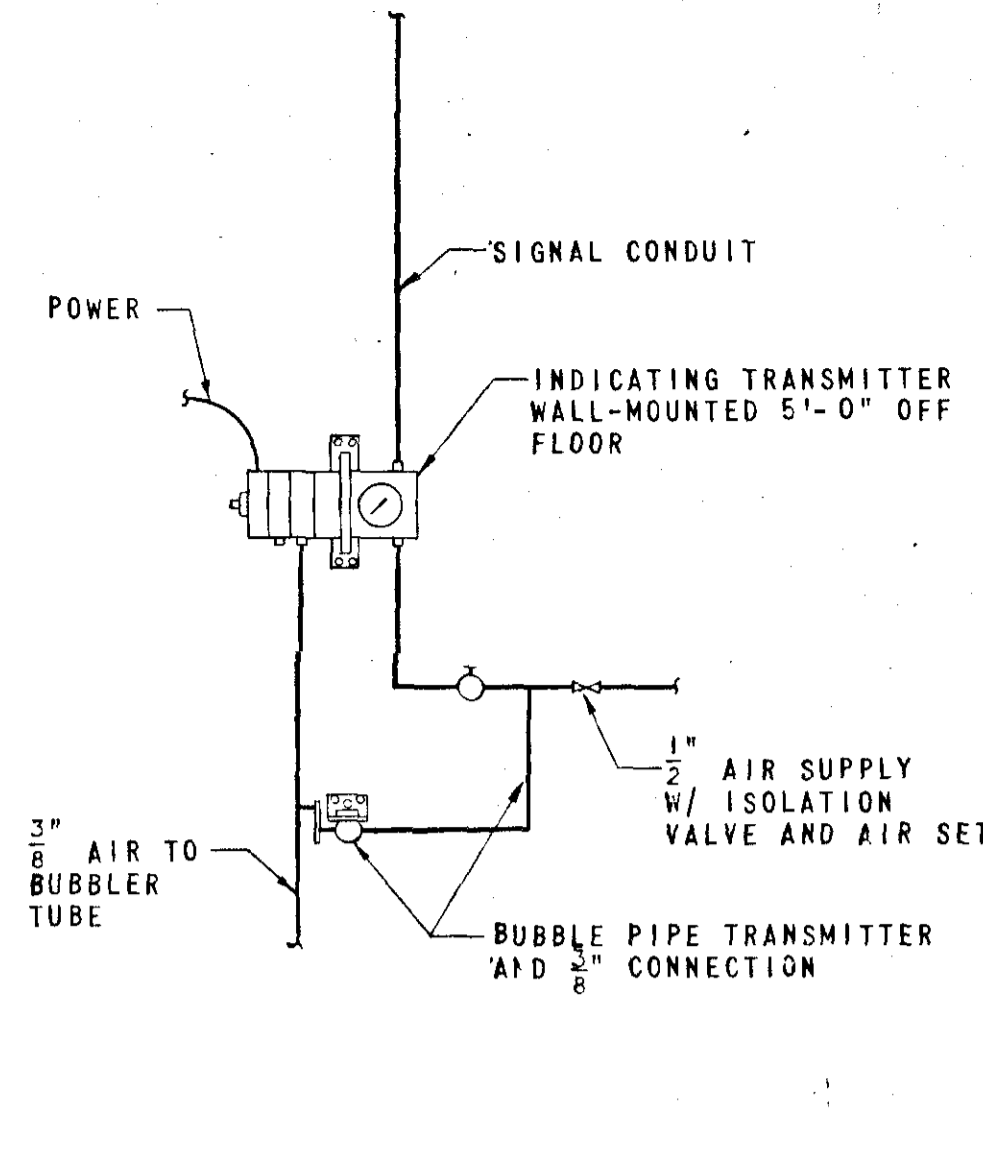
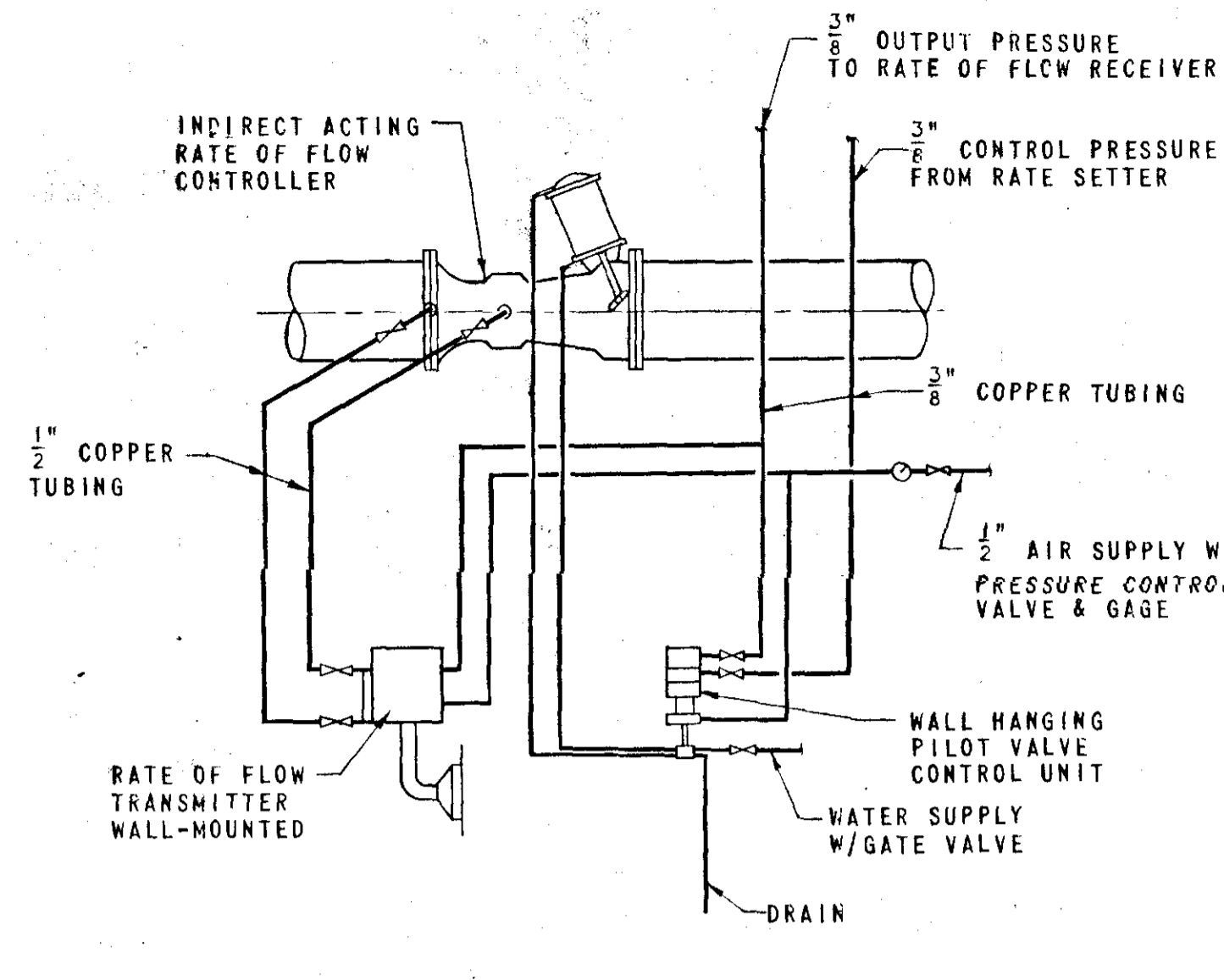


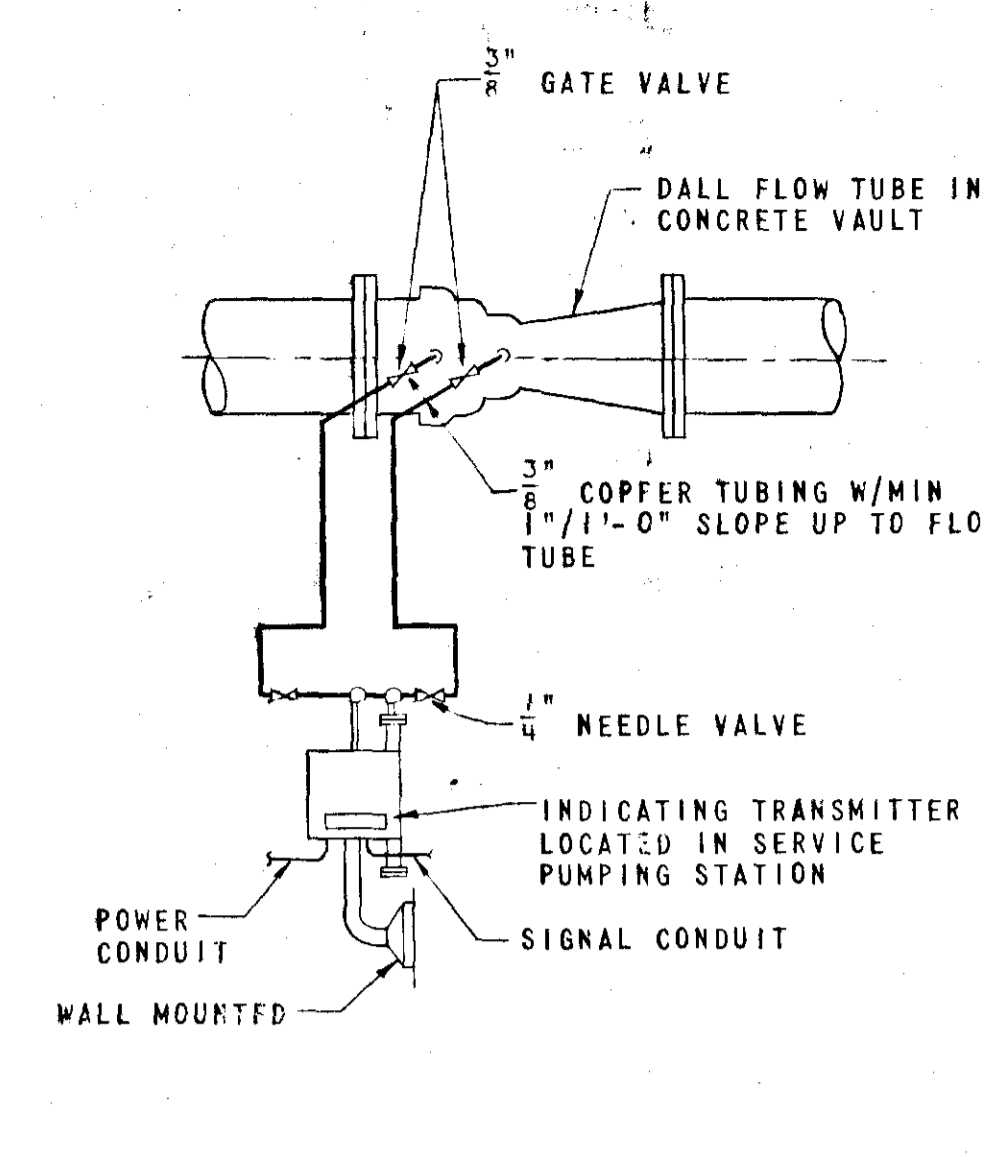
**FILTER LOSS OF HEAD TRANSMITTER CONNECTION**  
NO SCALE



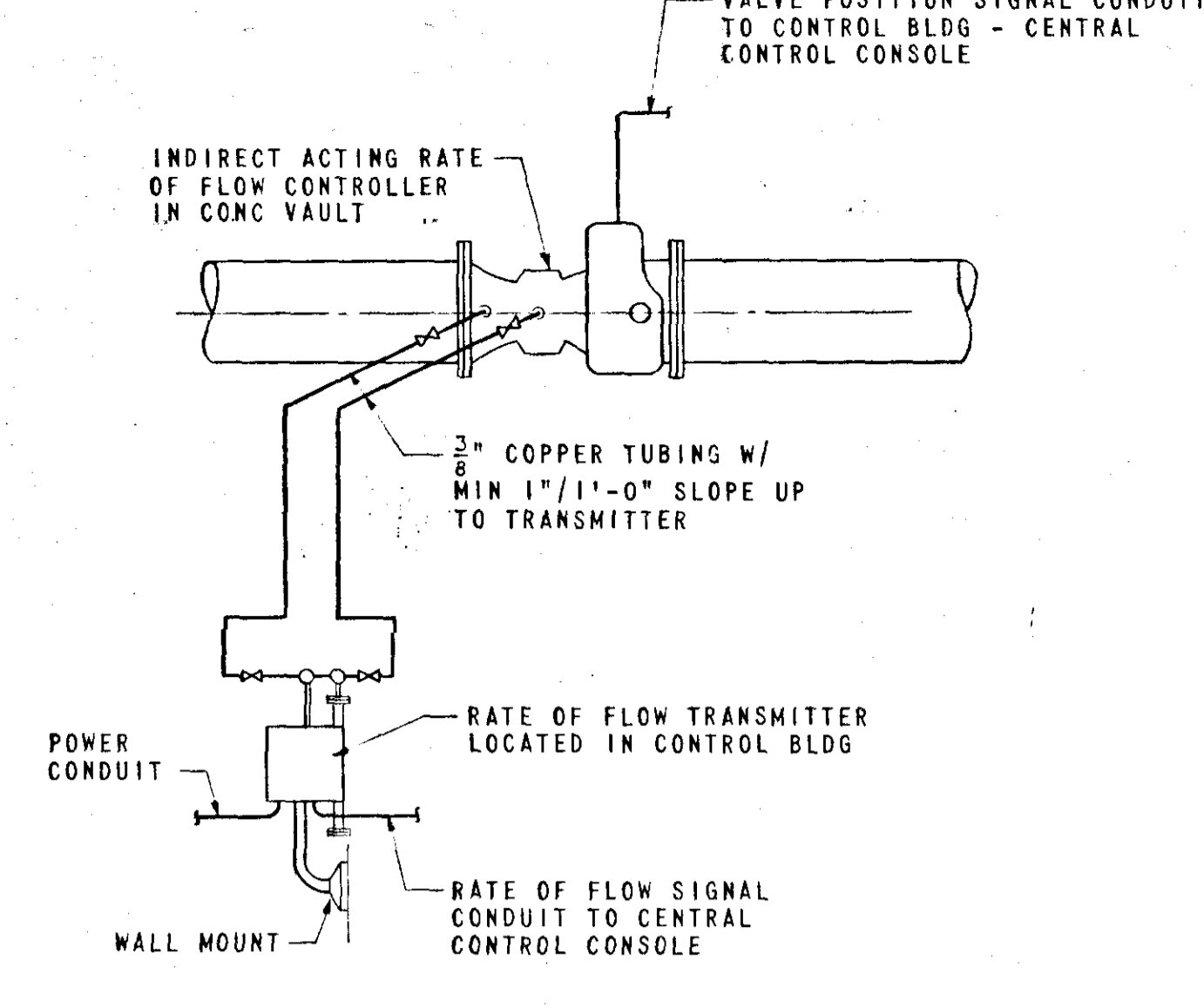
**CLEAR WELL LEVEL CONTROL TRANSMITTER CONNECTION**  
NO SCALE



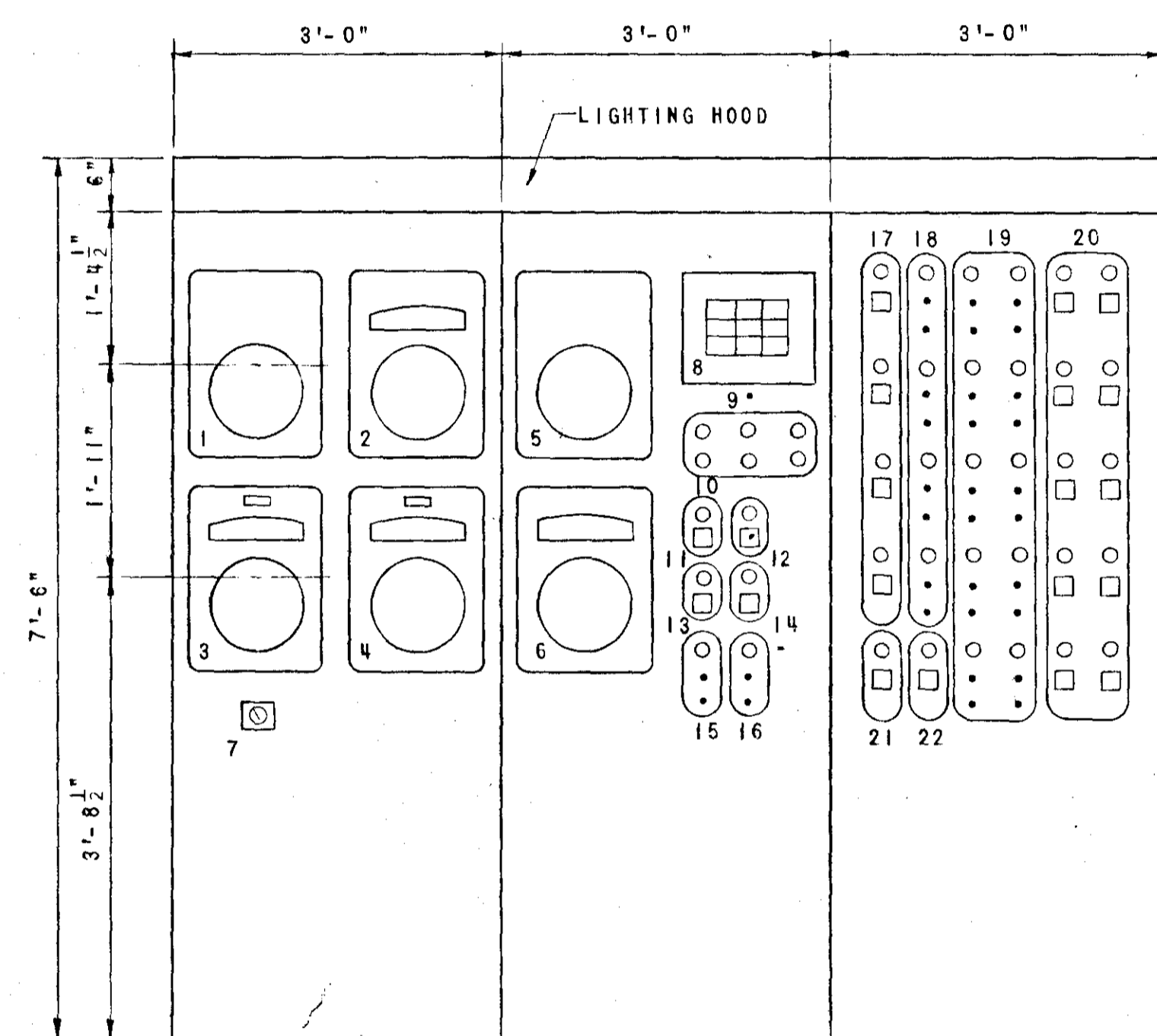
**FILTER RATE OF FLOW TRANSMITTER CONNECTION**  
NO SCALE



**FINISHED WATER FLOW METER TRANSMITTER CONNECTION**  
NO SCALE



**RAW WATER RATE OF FLOW TRANSMITTER CONNECTION**  
NO SCALE

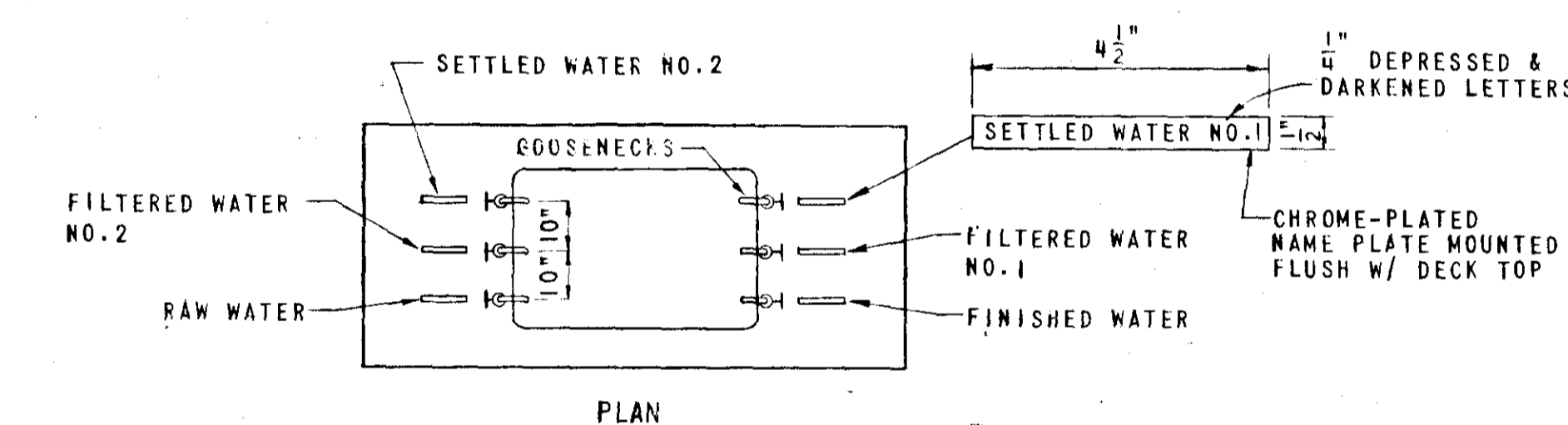
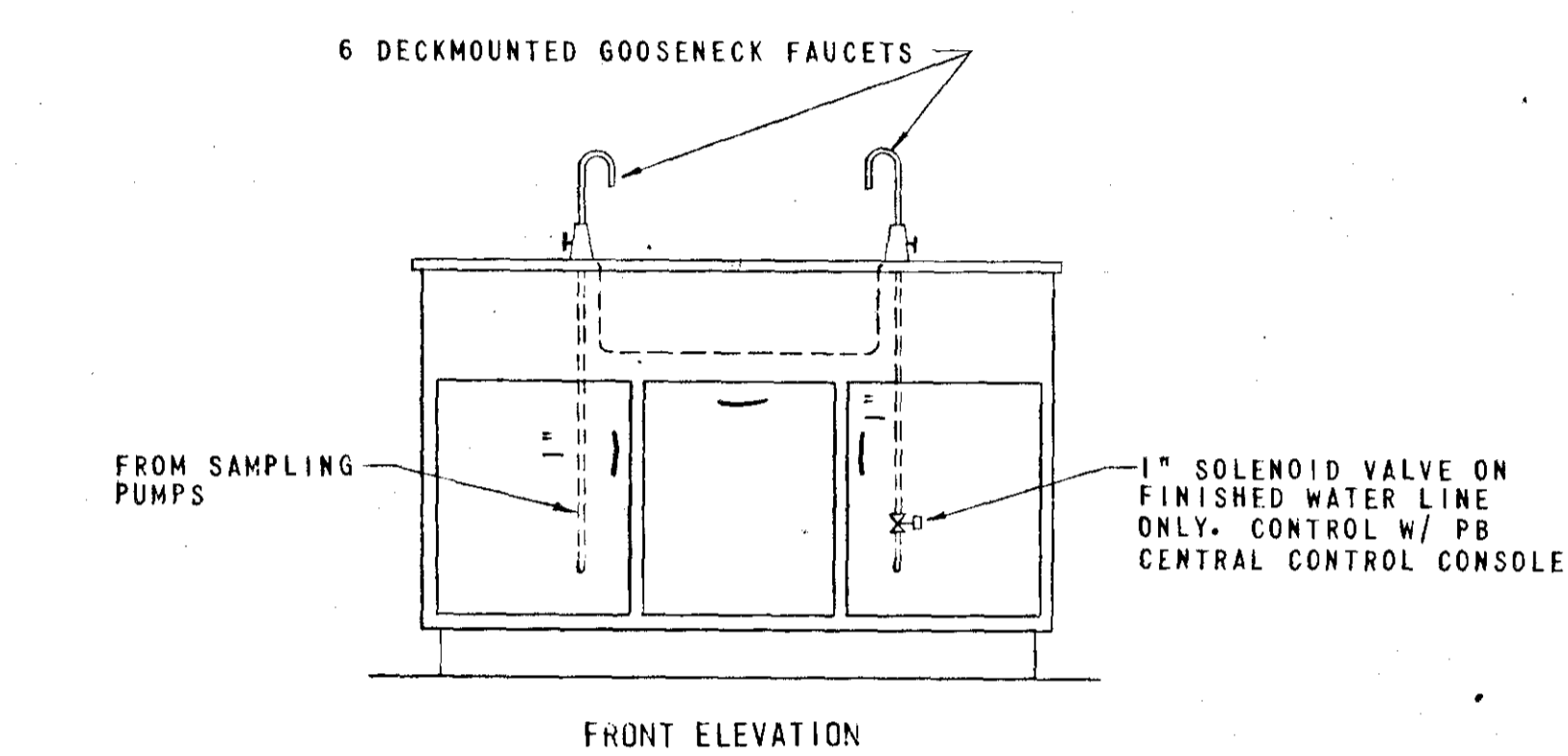


**CENTRAL CONTROL CONSOLE**  
SCALE: 3/8" = 1'-0"

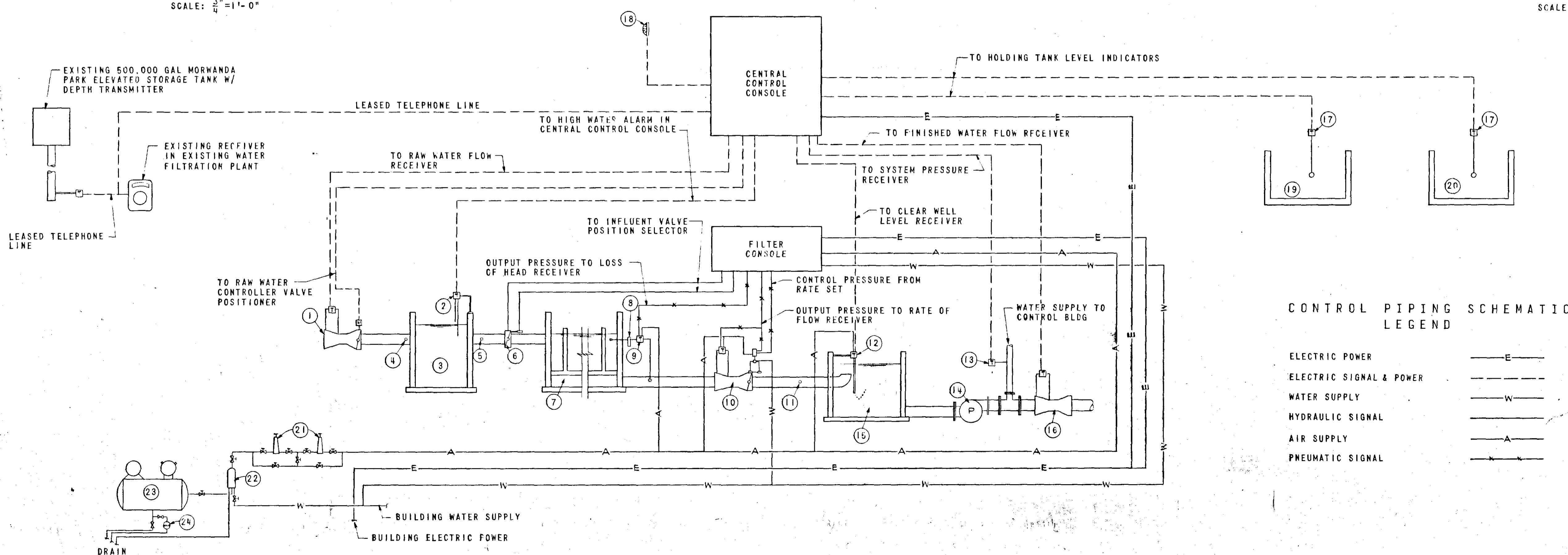
MARK	DESCRIPTION
1	ELEVATED TANK DEPTH INDICATING - RECEIVER
2	DISCHARGE PRESSURE INDICATING - RECORDING RECEIVER
3	RAW WATER FLOW INDICATING - RECORDING - TOTALIZING RECEIVER
4	FINISHED WATER FLOW INDICATING - RECORDING - TOTALIZING RECEIVER
5	CLEAR WELL DEPTH INDICATING RECEIVER
6	LIQUID HOLDING TANK DEPTH & SLUDGE HOLDING TANK DEPTH DOUBLE DIAL INDICATING RECEIVER
7	RAW WATER RATE OF FLOW CONTROLLER
8	9 LIGHT ANNUNCIATOR INDICATING: HIGH CLEAR WELL, LOW CLEAR WELL, LOW CONTROL AIR PRESSURE, HIGH WATER IN SEDIMENTATION BASINS, HIGH WATER IN LIQUID HOLDING TANK, HIGH WATER IN SLUDGE HOLDING TANK, SLUDGE SCRAPER OVERLOAD
9	AUDIO ALARM SILENCE PB
10	RUNNING LIGHT FOR: FLUORIDE METERING PUMP, DRY CHEMICAL FEEDER NO.1, DRY CHEMICAL FEEDER NO.2, DRY CHEMICAL FEEDER NO.3, SOLUTION WATER PUMP NO.1, SOLUTION WATER PUMP NO.2
11	ON-OFF STA W/ RUNNING LIGHT FOR SOLENOID VALVE ON CHLORINATOR WATER SUPPLY
12	ON-OFF STA W/ RUNNING LIGHT FOR ALUM METERING & SOLUTION PUMP AND MIXER ON ALUM SOLUTION TANK
13	LIQUID RETURN PUMP OFF-AUTO STA W/ RUNNING LIGHT
14	TRANSFER PUMP HAND-OFF-AUTO STA W/ RUNNING LIGHT
15	ON-OFF-PB STA W/ RUNNING LIGHT AND 6 POLE (NORMALLY OPEN CONTACTS) RELAY FOR 120 V COILS TO CONTROL: RAW WATER SAMPLING PUMP, SETTLED WATER SAMPLING PUMPS NO.1 & NO.2, FILTERED WATER SAMPLING PUMPS NO.1 & NO.2, SOLENOID VALVE ON FINISHED WATER SAMPLING LINE.
16	RAPID MIX ON-OFF PB STA W/ RUNNING LIGHT
17	ON-OFF STA W/ RUNNING LIGHT FOR RAW WATER PUMPS NO.1, NO.2, NO.3 & NO.4 (LABEL CAPACITY IN GPM)
18	ON-OFF PB STA W/ RUNNING LIGHT FOR SERVICE PUMPS NO.1, NO.2, NO.3 & NO.4 (LABEL CAPACITY IN GPM)
19	ON-OFF PB STA W/ RUNNING LIGHT FOR FLOCCULATORS NO.1 THRU NO.10
20	ON-OFF STA W/ RUNNING LIGHT FOR SLUDGE COLLECTORS NO.1 THRU NO.10
21	ON-OFF STA W/ RUNNING LIGHT FOR SLUDGE COLLECTOR IN LIQUID HOLDING TANK
22	ON-OFF STA W/ RUNNING LIGHT FOR SLUDGE COLLECTOR IN SLUDGE HOLDING TANK

**CENTRAL CONTROL CONSOLE SCHEDULE**

MARK	DESCRIPTION
14	TRANSFER PUMP HAND-OFF-AUTO STA W/ RUNNING LIGHT
15	ON-OFF-PB STA W/ RUNNING LIGHT AND 6 POLE (NORMALLY OPEN CONTACTS) RELAY FOR 120 V COILS TO CONTROL: RAW WATER SAMPLING PUMP, SETTLED WATER SAMPLING PUMPS NO.1 & NO.2, FILTERED WATER SAMPLING PUMPS NO.1 & NO.2, SOLENOID VALVE ON FINISHED WATER SAMPLING LINE.
16	RAPID MIX ON-OFF PB STA W/ RUNNING LIGHT
17	ON-OFF STA W/ RUNNING LIGHT FOR RAW WATER PUMPS NO.1, NO.2, NO.3 & NO.4 (LABEL CAPACITY IN GPM)
18	ON-OFF PB STA W/ RUNNING LIGHT FOR SERVICE PUMPS NO.1, NO.2, NO.3 & NO.4 (LABEL CAPACITY IN GPM)
19	ON-OFF PB STA W/ RUNNING LIGHT FOR FLOCCULATORS NO.1 THRU NO.10
20	ON-OFF STA W/ RUNNING LIGHT FOR SLUDGE COLLECTORS NO.1 THRU NO.10
21	ON-OFF STA W/ RUNNING LIGHT FOR SLUDGE COLLECTOR IN LIQUID HOLDING TANK
22	ON-OFF STA W/ RUNNING LIGHT FOR SLUDGE COLLECTOR IN SLUDGE HOLDING TANK



**SAMPLING SINK DETAILS**  
SCALE: 3/8" = 1'-0"



**CONTROL PIPING SCHEMATIC**  
NO SCALE

**CONTROL PIPING SCHEMATIC LEGEND**

ELECTRIC POWER	—E—
ELECTRIC SIGNAL & POWER	---E---
WATER SUPPLY	—W—
HYDRAULIC SIGNAL	---W---
AIR SUPPLY	—A—
PNEUMATIC SIGNAL	---A---

MARK	DESCRIPTION	MARK	DESCRIPTION
1	RAW WATER RATE CONTROLLER & TRANSMITTER	13	SYSTEM PRESSURE TRANSMITTER
2	SEDIMENTATION BASIN HIGH WATER PROBE	14	SERVICE PUMPS
3	SEDIMENTATION BASIN	15	CLEAR WELL
4	RAW WATER SAMPLING POINT IN CONTROL BLDG AT RAPID MIXER	16	FINISHED WATER FLOW METER & TRANSMITTER
5	SETTLED WATER SAMPLING POINT IN FILTER PIPE GALLERY	17	FLOAT TRANSMITTER
6	HYDRAULIC FILTER INFLUENT VALVE	18	OUTSIDE ALARM HORN
7	FILTER	19	LIQUID HOLDING TANK
8	SEDIMENT TRAP & STRAINER	20	SLUDGE HOLDING TANK
9	LOSS OF HEAD TRANSMITTER	21	PRESSURE REDUCING VALVE
10	INDIRECT ACTING HYDRO-PNEUMATIC FILTER EFFLUENT CONTROLLER WITH PILOT VALVE & TRANSMITTER	22	CONDENSER FILTER
11	FILTERED WATER SAMPLING POINT IN PIPE GALLERY	23	AIR COMPRESSOR
12	CLEAR WELL LEVEL SENSING TRANSMITTER	24	AUTOMATIC DRAIN VALVE

REVISION	DATE	DESCRIPTION	BY	APP.
DESIGNED	DFC	WATER FILTRATION PLANT		
DRAWN	JT	CITY OF SALEM, VIRGINIA		
CHECKED	SMC	CIVIL		
APPROVED	[Signature]	CONTROLS		
SUBMITTED	1/2/70			
HAYES, SEAY, MATTERN & MATTERN ARCHITECTS — ENGINEERS		SCALE AS NOTED	COMM NO. 3627-A	
		DATE APRIL 1970	SHEET C-10	