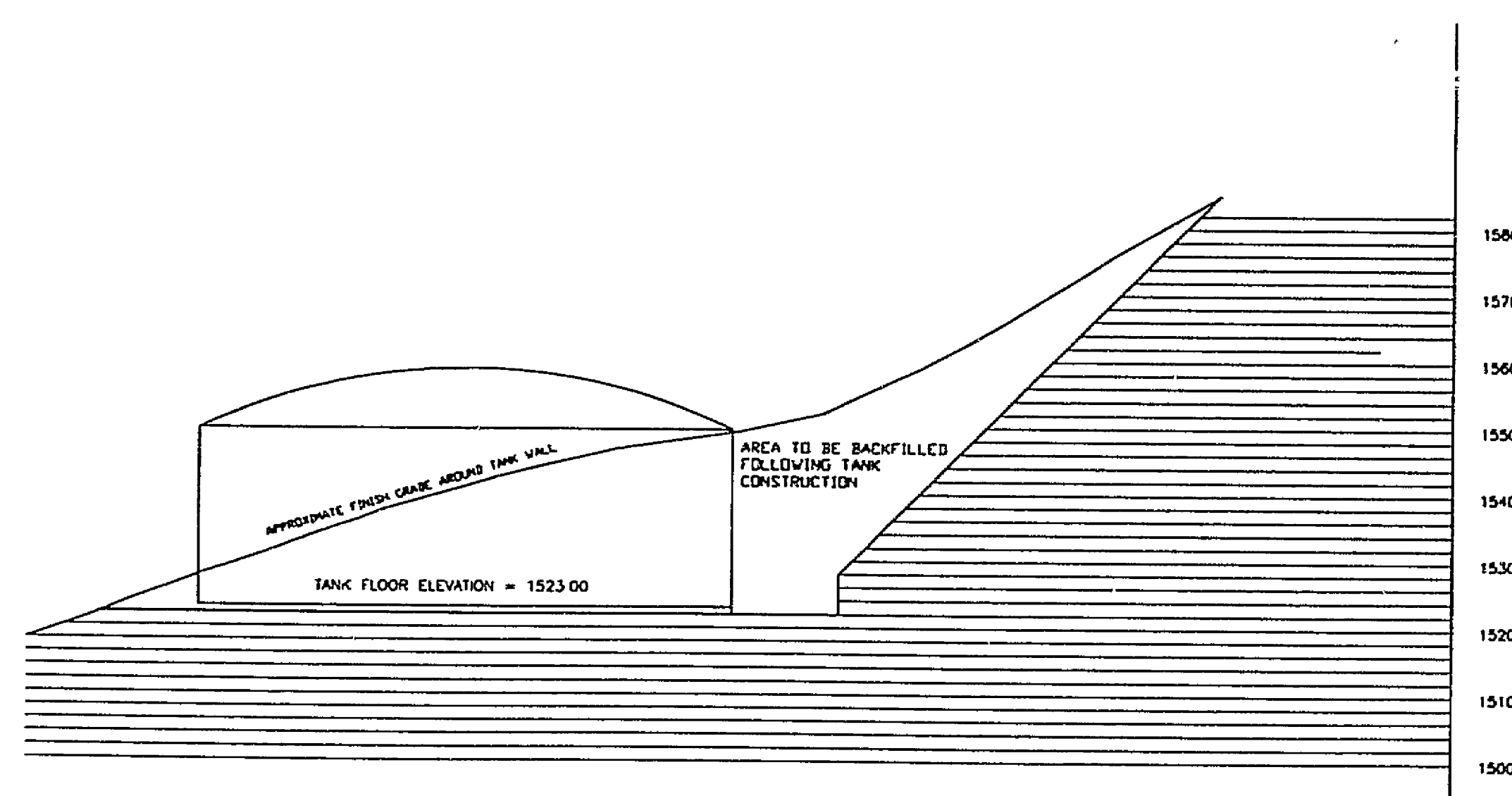
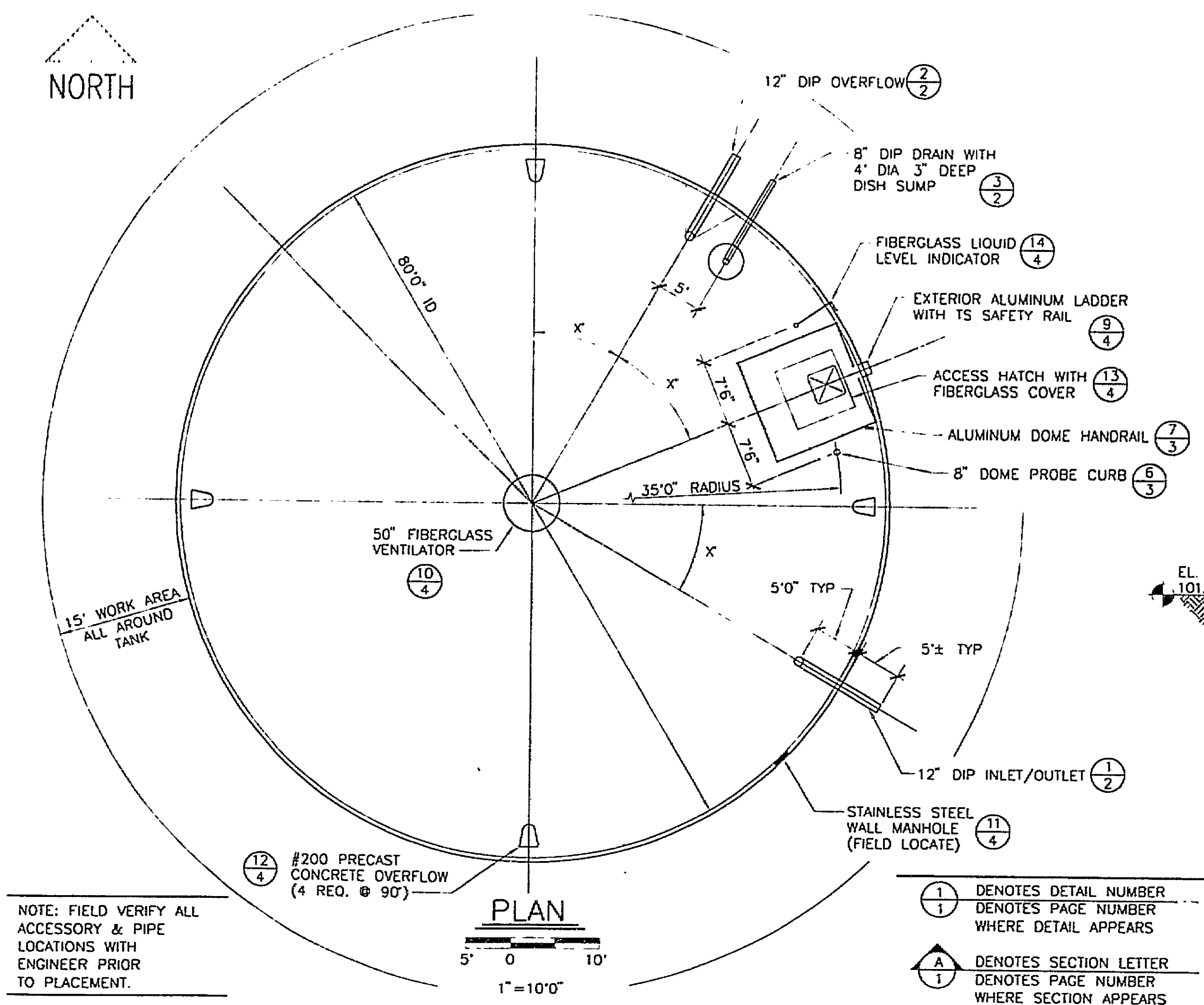
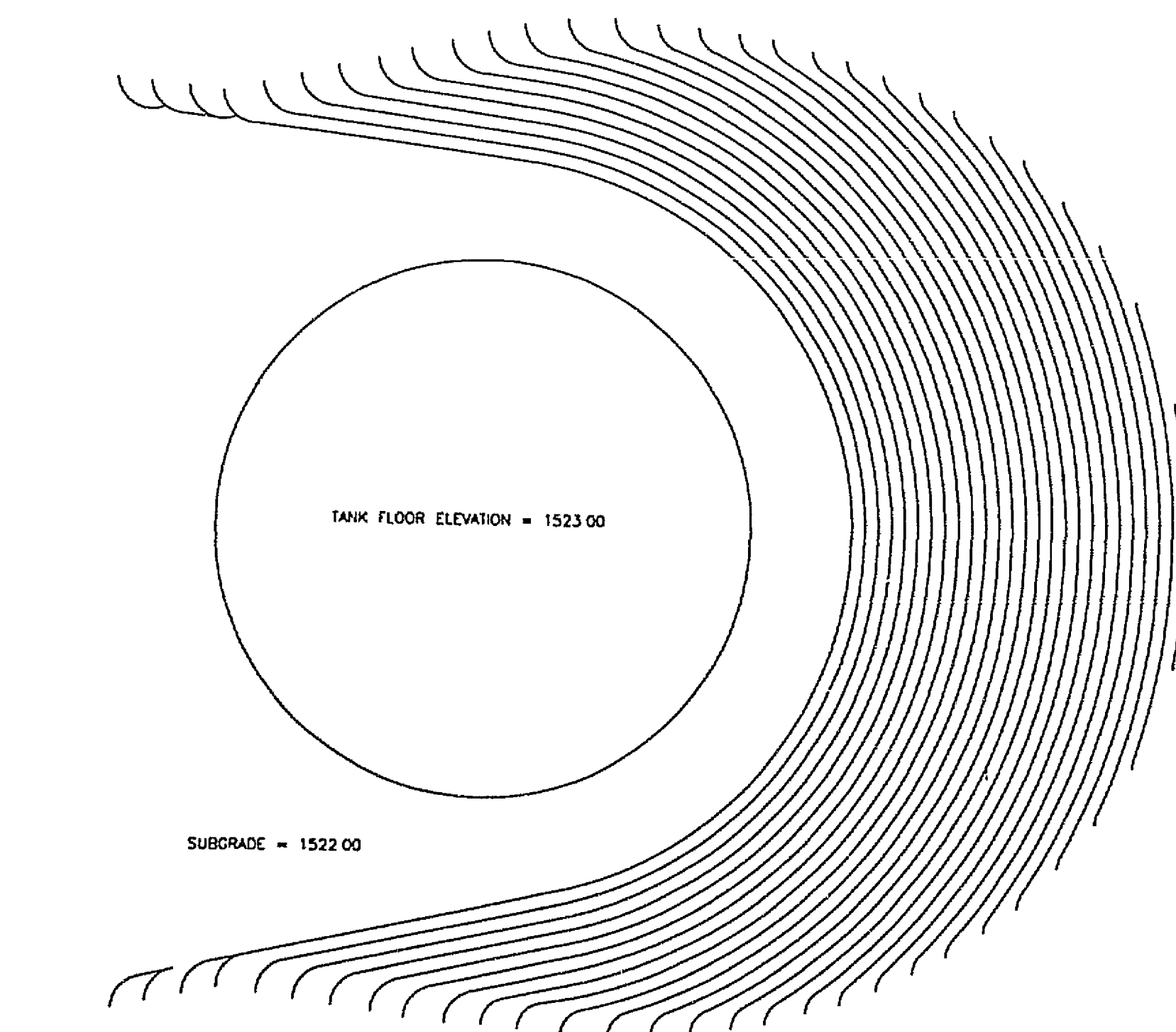
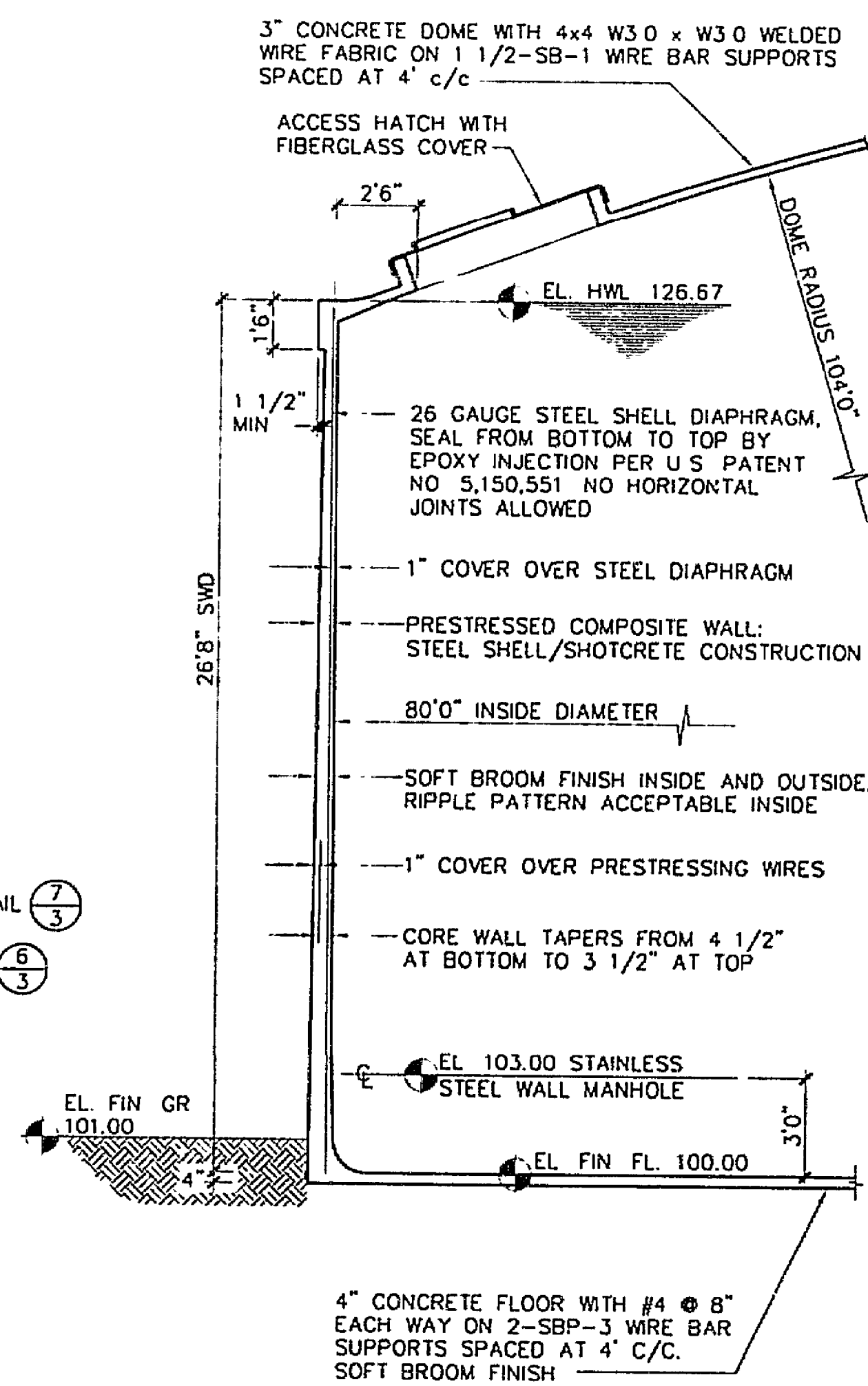
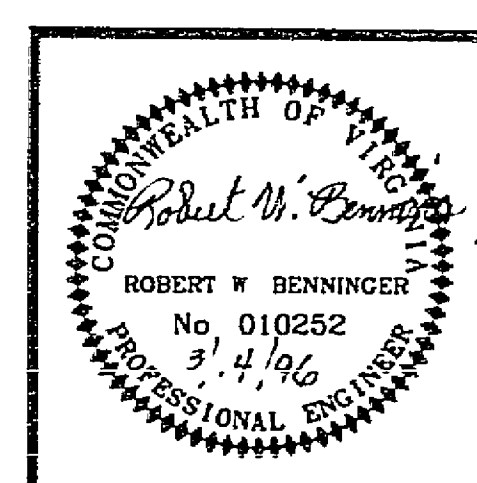


- NOTES:
1. SHOTCRETE SHALL BE APPLIED BY OR UNDER DIRECT SUPERVISION OF NOZZLEMEN CERTIFIED IN ACCORDANCE WITH ACI GUIDELINES.
 2. TENSION IN PRESTRESSING WIRE SHALL BE MEASURED BY AN ELECTRONIC DIRECT-READING STRESSOMETER ACCURATE TO WITHIN 1%.



ROANOKE COUNTY UTILITY DEPARTMENT
SOUTH LOOP 1 MILLION GALLON
WATER STORAGE TANK



PLAN AND ELEVATIONS

DESIGN ENGINEER
ROBERT W. BENNINGER

ROANOKE COUNTY BID
1-97-87

DATE
MARCH 12, 1996

5 of 7

WLM-0306