

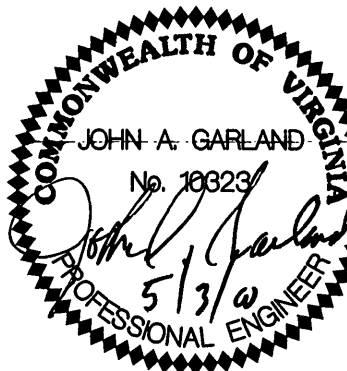
SPECTRUM DESIGN

325 MOUNTAIN AVENUE ROANOKE, VIRGINIA 24016 540.345.8020  
ROANOKE • MARION • VIRGINIA BEACH

ROANOKE SEWAGE  
TREATMENT PLANT

BLOWER  
ROOM  
RENOVATION

SPECTRUM DESIGN PROJECT NO. 00001



DATE  
DESIGN ARCHITECT  
PROJECT ARCHITECT  
CHECKED BY  
DRAWN BY  
REVISIONS

28 APRIL 2000  
DGA  
DGA  
NUMBER  
DATE

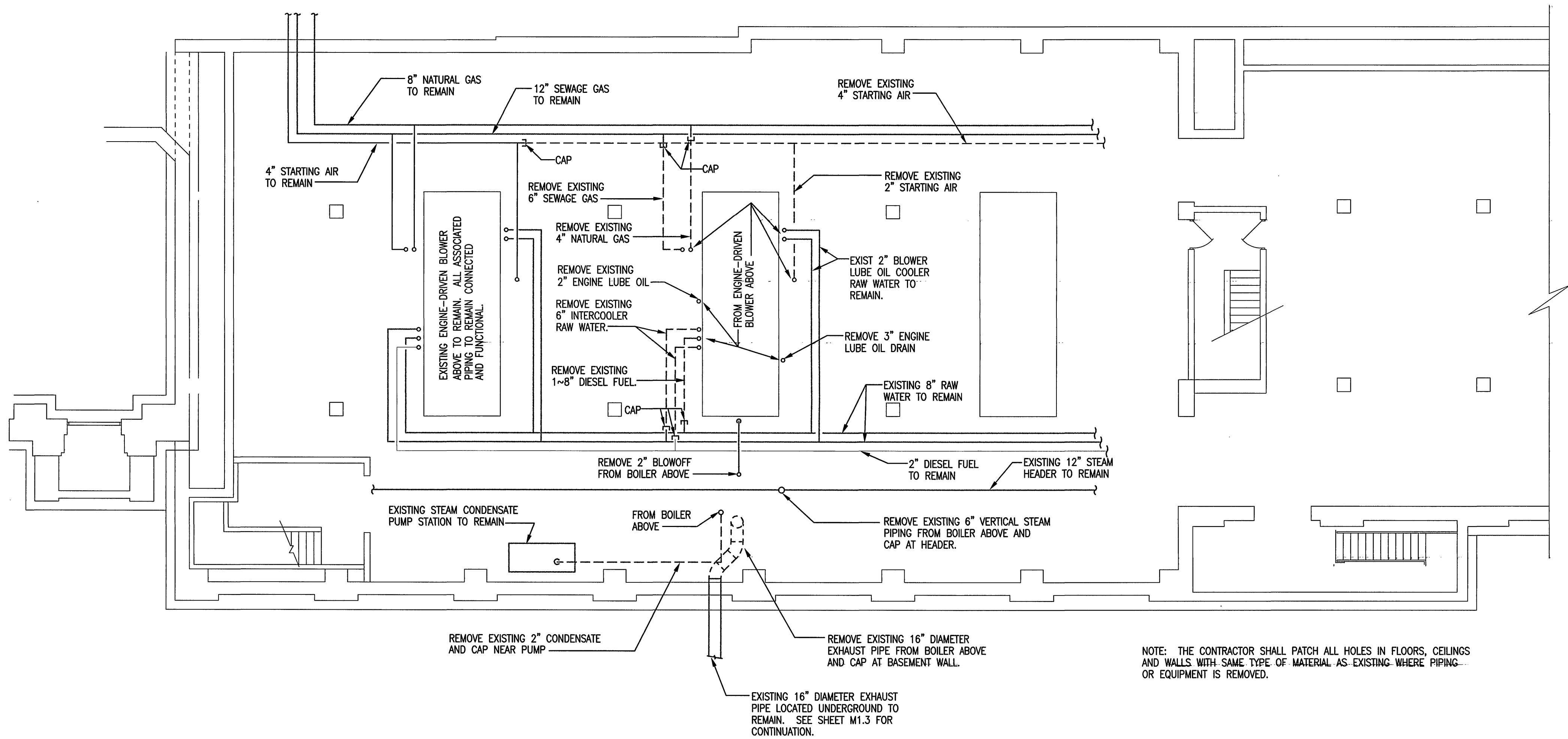
SHEET TITLE

BLOWER BUILDING  
BASEMENT PLAN

M-1.1

**LEGEND**

	BRANCH CONNECTION - BOTTOM OF MAIN
	BRANCH CONNECTION - SIDE OF MAIN
	BRANCH CONNECTION - TOP OF MAIN
	PIPE DOWN OR PIPE FROM BELOW
	PIPE UP OR PIPE FROM ABOVE
	DIRECTION OF FLOW
	EXISTING PIPE
	EXISTING PIPE TO BE REMOVED
	GATE VALVE
	BUTTERFLY VALVE
	FLOW STATION
	EXISTING DUCT TO REMAIN
	EXISTING DUCT TO BE REMOVED
	ROUND DUCT
	POINT OF CONNECTION, NEW TO EXISTING



NOTE: THE CONTRACTOR SHALL PATCH ALL HOLES IN FLOORS, CEILINGS AND WALLS WITH SAME TYPE OF MATERIAL AS EXISTING WHERE PIPING OR EQUIPMENT IS REMOVED.

BASEMENT FLOOR PLAN

1/8"=1'-0"