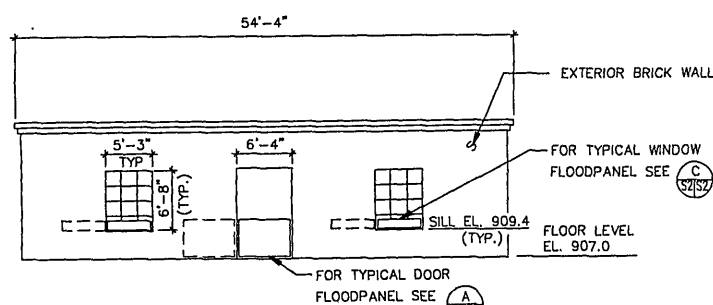
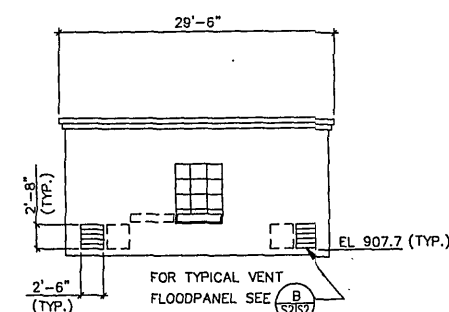


GENERAL NOTES FOR ALL BUILDINGS

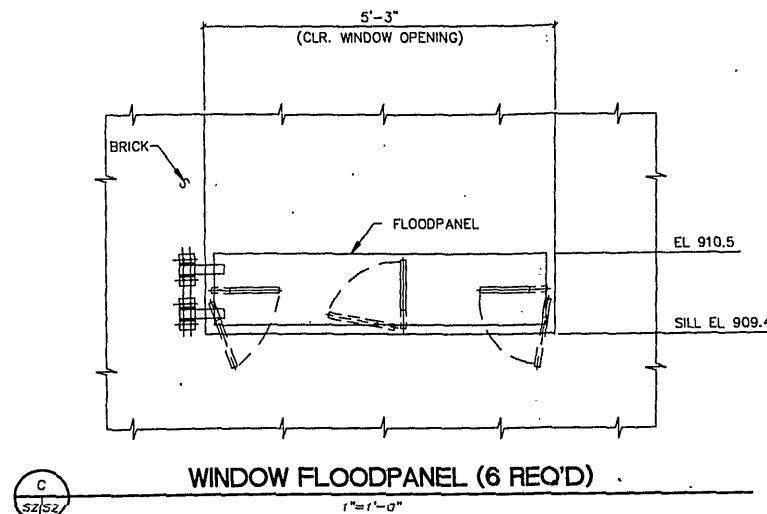
1. CONTRACTOR SHALL SEAL ALL CONCRETE THAT HAS BEEN CUT OR CHIPPED UPON COMPLETION OF ASSOCIATED WORK.
2. CONTRACTOR SHALL FIELD VERIFY ALL DIMENSIONS PRIOR TO FABRICATION OF ANY FLOODPROOFING ELEMENTS.
3. FLOODPANELS AND FLOODGATES SHALL BE MANUFACTURED BY THE PRESRAY CORPORATION, PAWLING, NY (914-855-1220), OR APPROVED EQUAL.
4. ALL FLOODPANELS AND GATES SHALL BE INSTALLED WITH A KEEPER ASSEMBLY TO SECURE THEM IN THE OPEN POSITION. SEE PLATE S-13.
5. ALL DOOR OPENINGS THAT SWING OUT TO THE EXTERIOR OF THE BUILDING, WITH TYPE B CLOSURES, SHALL BE INSTALLED SUCH THAT ACCESS IS ALWAYS ALLOWED INTO THE BUILDING DURING CONSTRUCTION. ACCORDINGLY, ONCE SUCH A FLOOD ASSEMBLY HAS BEEN INSTALLED AND INSPECTED BY THE CONTRACTING OFFICER'S REPRESENTATIVE, THE SEALING FRAME SHALL BE REMOVED AND STORED AS DIRECTED.



1 WEST ELEVATION
(EAST ELEVATION SIMILAR)
1/8"=1'-0"

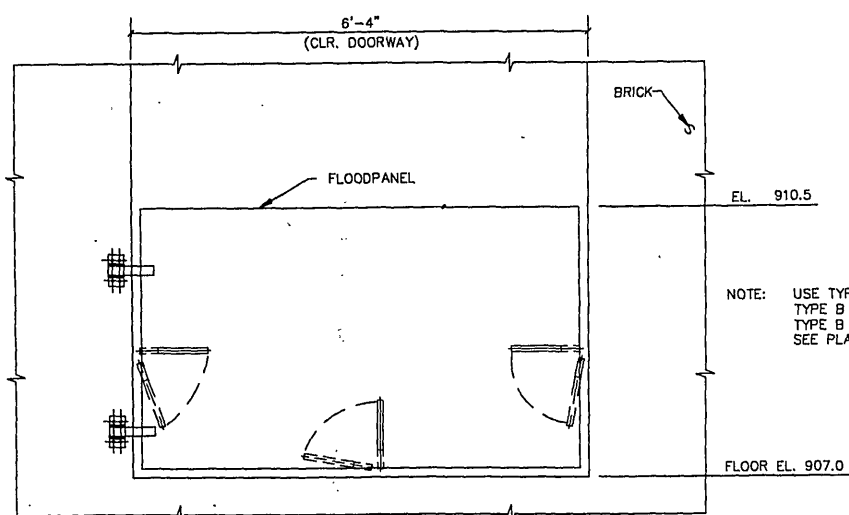


2 NORTH ELEVATION
(SOUTH ELEVATION SIMILAR)
1/8"=1'-0"



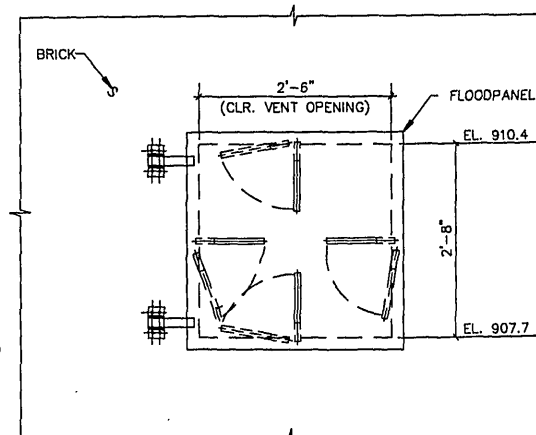
NOTE: USE TYPE A HEAD, TYPE B JAMB, AND TYPE B SILL. SEE PLATE S-13

WINDOW FLOODPANEL (6 REQ'D)



NOTE: USE TYPE A HEAD, TYPE B JAMB, AND TYPE B THRESHOLD. SEE PLATE S-13

A DOOR FLOODPANEL (2 REQ'D)
1"=1'-0"



NOTE: USE TYPE C HEAD, TYPE C JAMB, AND TYPE C SILL. SEE PLATE S-13

B VENT FLOODPANEL (4 REQ'D)
1"=1'-0"

RECORD DRAWING

AS BUILT RECORD DWG.		8-31-93	SPH
Symbol	Descriptions	Date	Approved
Revisions			
U.S. ARMY ENGINEER DISTRICT CORPS OF ENGINEERS WILMINGTON, NORTH CAROLINA			
ROANOKE, VIRGINIA			
FLOOD REDUCTION PROJECT			
SEWAGE TREATMENT PLANT FLOODPROOFING NITRIFICATION BASIN BUILDING			
Designed by: JKJ	Scale: AS SHOWN	Plate Number: RRSTP2	PLOT SCALE: 1"=1'-0"
Drawn by: JKJ	Date: APRIL 1991	Sheet 11 of 25	
Checked by: JBW	Drawing Code: RR102-02-32		
Reviewed by: C. O. Williams, P.E. CHIEF, STRUCTURES SECTION			
Approved by: B. J. Lamer, P.E. CHIEF, DESIGN BRANCH			