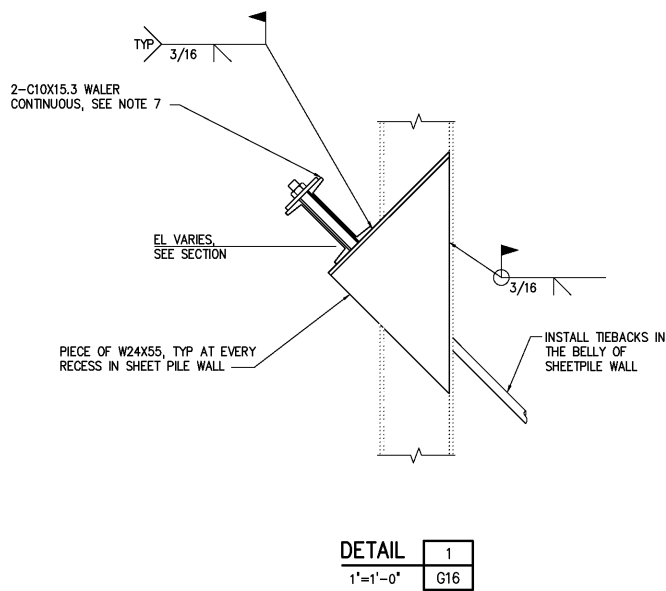
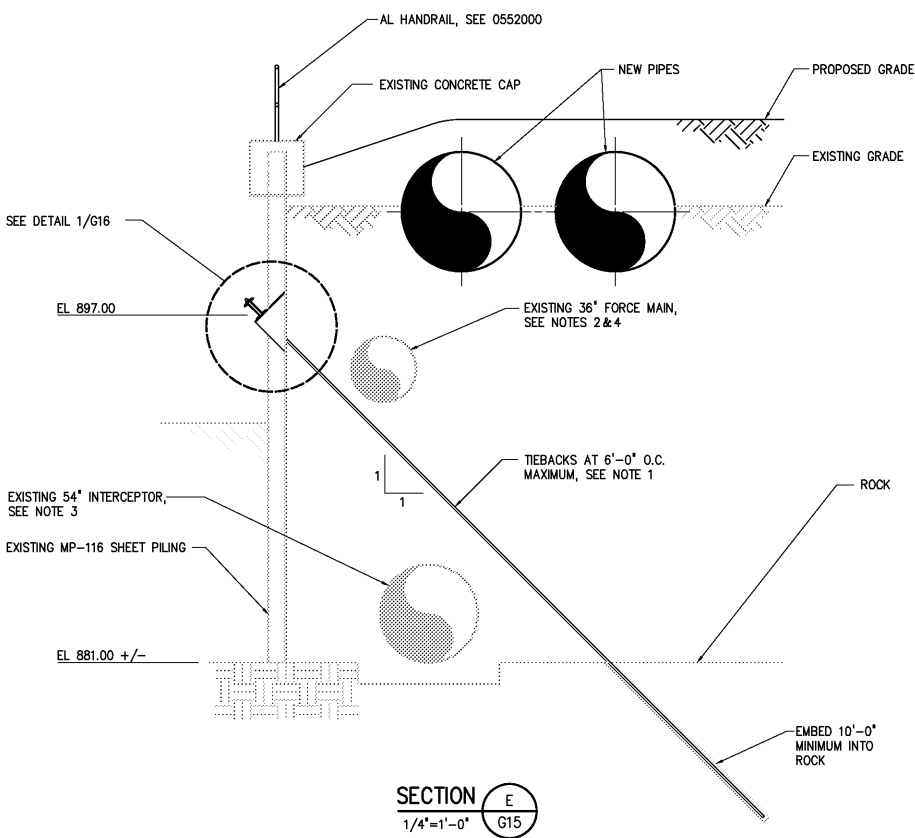
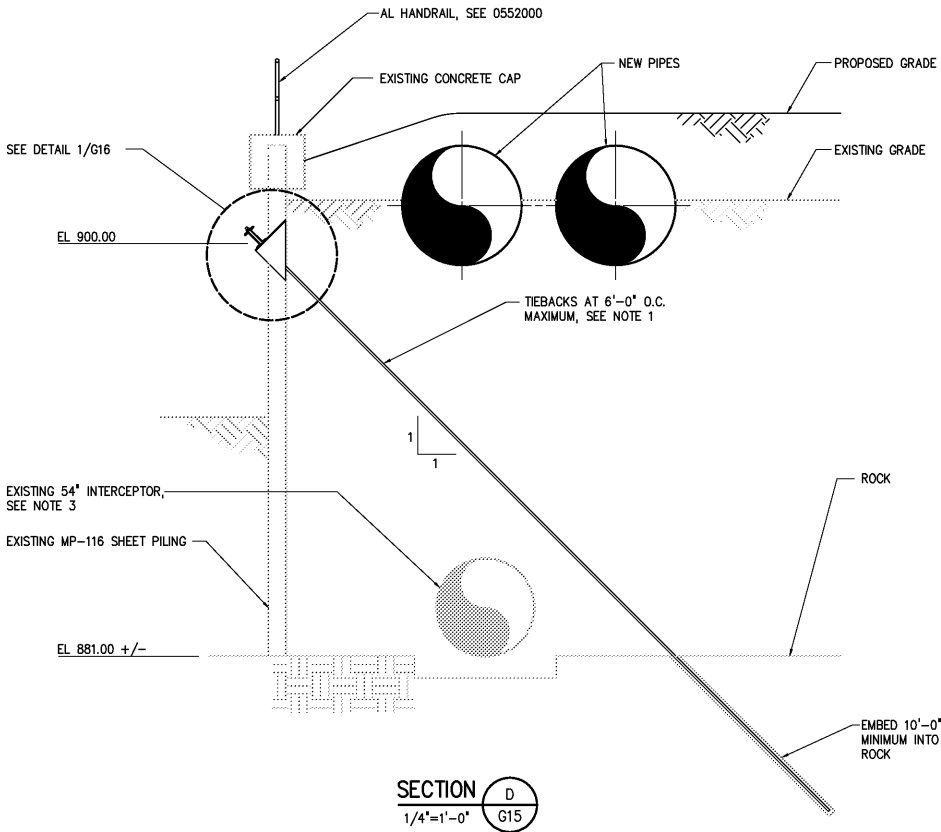


- NOTES:
- 1 TIEBACKS SHALL BE HIGH STRENGTH (150 KSI) DYWIDAG THREAD BARS AS MANUFACTURED BY WILLIAMS FORM ENGINEERING CORPORATION OR APPROVED EQUAL. TIEBACKS SHALL BE GROUT BONDED WITH STRESSING LENGTHS AND BOND LENGTHS AS NECESSARY TO DEVELOP MINIMUM ALLOWABLE LOAD OF 55 KIPS. ALLOWABLE PULLOUT RESISTANCE ALONG THE GROUT/ROCK INTERFACE IS 5,500 PSF. TIEBACKS SHALL BE LOAD TESTED IN ACCORDANCE WITH REQUIREMENTS OF SPECIFICATION SECTION 02216.
 - 2 THE CONTRACTOR SHALL VERIFY THE LOCATION OF THE EXISTING 36" FORCE MAIN BY EXCAVATING AT A MAXIMUM SPACING OF 25 FEET. NOTIFY THE ENGINEER IF ADJUSTMENT OF THE TIEBACK ELEVATION IS NECESSARY.
 - 3 THE INFORMATION SHOWN FOR THE EXISTING 54" INTERCEPTOR IS COMPILED FROM RECORD DRAWINGS BY CROWDER CONSTRUCTION COMPANY TITLED 54" TINKER CREEK INTERCEPTOR. THE CONTRACTOR SHALL REVIEW EXISTING RECORD DRAWINGS OF THE 54" INTERCEPTOR AND SPACE THE TIEBACKS AT THE EXISTING 54" OUTFALL AND THE NORTH-SOUTH LEG OF THE INTERCEPTOR AS REQUIRED TO AVOID INTERFERENCES.
 - 4 THE INFORMATION SHOWN FOR THE 36" FORCE MAIN IS COMPILED FROM THE FOLLOWING: DRAWINGS BY MALCOM PIRNIE AND MATTERN & CRAIG, INC. TITLED: WATER POLLUTION CONTROL PLANT UPGRADE AND EXPANSION. DATED: MAY 1997.
 - 5 ALL STRUCTURAL STEEL SHALL BE PAINTED PER SPECIFICATION SECTION 09900.
 - 6 TIEBACKS AND WALERS SHALL BE INSTALLED PRIOR TO INSTALLATION OF NEW PIPES AND PLACEMENT OF FILL.
 - 7 WALER BETWEEN THE PAIR OF DOUBLE TIEBACKS AT THE EXISTING 54" OUTFALL SHALL BE 2-C15X50. DOUBLE TIEBACKS SHALL ATTACH TO 2-C15X50 AT EACH END. WHERE 2-C15X15.3 WALER ABUTS 2-C15X50 WALER, SINGLE TIEBACK FOR 2-C15X15.3 SHALL BE LOCATED A MAXIMUM OF 6'-0" FROM ADJACENT DOUBLE TIEBACKS.
 - 8 ELEVATION OF SUPPORT WALER CHANGES AT REFERENCED LOCATION. A MINIMUM OF 3'-0" OVERLAP SHALL BE PROVIDED BETWEEN UPPER AND LOWER WALERS. TIEBACKS SHALL BE SPACED A MAXIMUM OF 3'-0" APART AT THE TRANSITION.



				DESIGNED	BGS/DDZ
				DRAWN	BGS/DDZ
				CHECKED	
	RECORD DRAWINGS	MAR 2008	RLT	PROJ. ENGR.	DAN
	CONSTRUCTION	MAR 2004	RLT		
	REGULATORY APPROVAL	NOV 2003	RLT		
	PRELIMINARY DESIGN	NOV 2002	RLT		
NO.	ISSUED FOR	DATE	BY	APPROVED	

THIS DOCUMENT ORIGINALLY ISSUED FOR CONSTRUCTION AND SEALED BY ROBERT S. DIFIORE, SEAL NO. 22769

RECORD DRAWING

THIS DRAWING HAS BEEN MODIFIED TO REFLECT FIELD CHANGES REPORTED BY THE CONTRACTOR OR ANOTHER PARTY, BUT NOT VERIFIED BY THE CERTIFYING ENGINEER. THIS DOCUMENT ORIGINALLY ISSUED AND SEALED BY CHRISTOPHER T. PHILLIPS, 033796. THIS MEDIA SHALL NOT BE CONSIDERED A CERTIFIED DOCUMENT.

THIS DOCUMENT ORIGINALLY ISSUED FOR CONSTRUCTION AND SEALED BY RONALD L. TAYLOR, SEAL NO. 024649

HAZEN AND SAWYER
Environmental Engineers & Scientists
4011 WestChase Blvd, Raleigh, North Carolina 27607

CITY OF ROANOKE
VIRGINIA

REGIONAL WATER POLLUTION CONTROL PLANT
WET WEATHER IMPROVEMENTS

SITE PLAN
GENERAL

SHEETING MODIFICATIONS AND MISCELLANEOUS SLABS

THE SCALE BAR SHOWN BELOW MEASURES ONE INCH LONG ON THE ORIGINAL DRAWING.	DATE	JULY 2003
	H & S JOB NUMBER	30788A
	CONTRACT NUMBER	A
	DRAWING NUMBER	G16