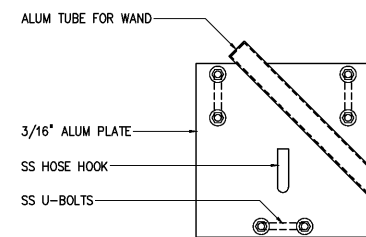


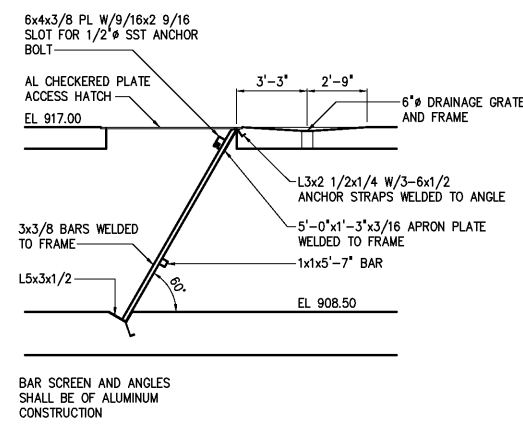
PRESSURE WASH SCHEMATIC

DETAIL	2
NTS	M124



PRESSURE WASH STATION

DETAIL	3
1 1/2"=1'-0"	M121



MANUAL BAR SCREEN

SECTION	D
1/4"=1'-0"	M120

NOTES:

- PRESSURE WAS SYSTEM SHALL CONSIST OF ONE WASH UNIT AND THREE (3) TRIGGER WANDS WITH 60 FEET OF HIGH PRESSURE HOSE EACH. THE PRESSURE WASH UNIT SHALL BE ALKOTA C421T WITH PRESSURE GAUGE AND ADJUSTMENT OPTIONS OF ALCESTER, SD, OR EQUAL. UNIT SHALL CONSIST OF A 0-2000 PSI (ADJUSTABLE), 4.0 GPM, BELT DRIVEN TRIPLEX OIL BATH PUMP WITH 480 VOLT, 5 HP MOTOR TEFC. UNIT SHALL BE EQUIPPED WITH ALUMINUM FRAME FOR MOUNTING AN 18" HIGH CONC BASE. ALL PRESSURE WASH SYSTEM VALVES SHALL BE RATED AT 2000 PSI.
- LAYOUT DIMENSIONS AND ELEVATIONS SHOWN ARE REPRESENTATIVE OF EQUIPMENT SUPPLIED BY ONE MANUFACTURER OF EACH TYPE OF PROCESS EQUIPMENT. ANY COST FOR REDESIGN, MATERIALS OR CONSTRUCTION DUE TO THE REQUIREMENTS OF THE EQUIPMENT ULTIMATELY FURNISHED SHALL BE THE RESPONSIBILITY OF THE CONTRACTOR.
- CONTRACTOR SHALL PROVIDE SCREENINGS RAKE WITH 11" HANDLE FOR CLEANING THE MANUAL BAR SCREEN. THE RAKE SHALL BE OF ALUMINUM CONSTRUCTION WITH SST FASTENERS AND SHALL BE FABRICATED BY THE MANUFACTURER OF THE MANUAL BAR SCREEN.

DESIGNED	DAN
DRAWN	BRC
CHECKED	
PROJ. ENGR.	DAN
APPROVED	
DATE	BY
MAR 2008	RLT
MAR 2004	RLT
NOV 2003	RLT
NOV 2002	RLT
ISSUED FOR	
NO.	

THIS DOCUMENT ORIGINALLY ISSUED FOR CONSTRUCTION AND SEALED BY ROBERT S. DIFIORE, SEAL NO. 22769

THIS DOCUMENT ORIGINALLY ISSUED FOR CONSTRUCTION AND SEALED BY RONALD L. TAYLOR, SEAL NO. 024649

RECORD DRAWING

THIS DRAWING HAS BEEN MODIFIED TO REFLECT FIELD CHANGES REPORTED BY THE CONTRACTOR OR ANOTHER PARTY, BUT NOT VERIFIED BY THE CERTIFYING ENGINEER. THIS DOCUMENT ORIGINALLY ISSUED AND SEALED BY DAVID A. NAILOR, 025465. THIS MEDIA SHALL NOT BE CONSIDERED A CERTIFIED DOCUMENT.

HAZEN AND SAWYER
Environmental Engineers & Scientists
4011 WestChase Blvd, Raleigh, North Carolina 27607

CITY OF ROANOKE
VIRGINIA

REGIONAL WATER POLLUTION CONTROL PLANT
WET WEATHER IMPROVEMENTS

PRELIMINARY TREATMENT FACILITIES
MECHANICAL
SECTIONS AND DETAILS

THE SCALE BAR SHOWN BELOW MEASURES ONE INCH LONG ON THE ORIGINAL DRAWING.	DATE	JULY 2003
	H & S JOB NUMBER	30788A
	CONTRACT NUMBER	A
	DRAWING NUMBER	M124