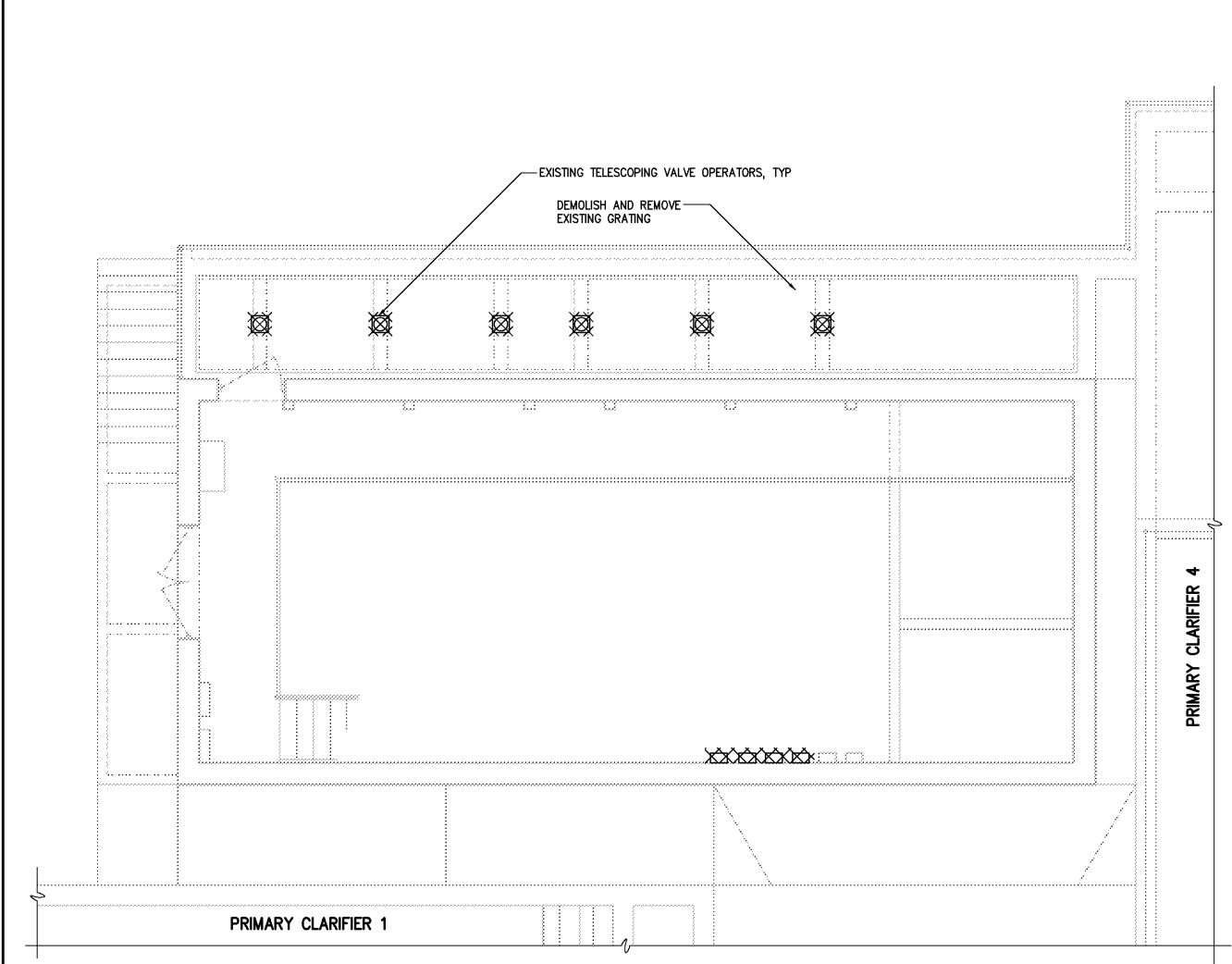
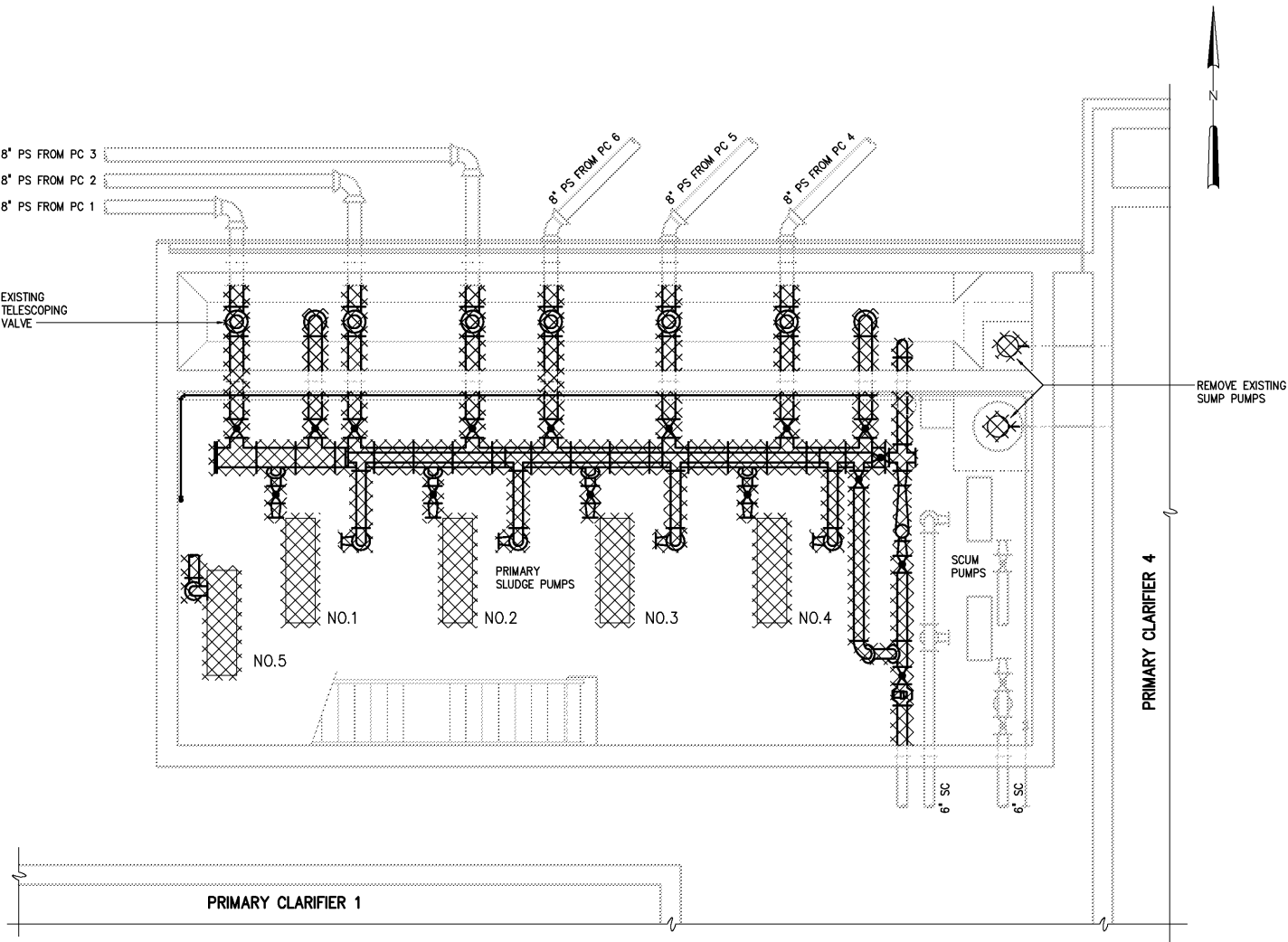


- NOTES:
- 1 REMOVE SLUDGE PIPING, PUMPS, EQUIPMENT, CONCRETE PADS AND SUPPORTS AS REQUIRED FOR INSTALLATION OF NEW EQUIPMENT.
  - 2 WHERE EXISTING CONCRETE PADS ARE REMOVED, EXPOSED CONCRETE FLOOR SHALL HAVE A SMOOTH FINISH.
  - 3 WHERE ANCHORING DEVICES AND/OR REINFORCEMENT STEEL REMAIN FOLLOWING DEMOLITION, REMOVE AND/OR BURN BACK REINFORCING STEEL 1/2" MINIMUM BELOW SURFACE AND FILL VOIDS CREATED WITH EPOXY RESIN BINDER.



TOP PLAN - DEMOLITION  
1/4"=1'-0"



BOTTOM PLAN - DEMOLITION  
1/4"=1'-0"

				DESIGNED	DAN
				DRAWN	H & S
				CHECKED	
	RECORD DRAWINGS	MAR 2008	RLT	PROJ. ENGR.	DAN
	CONSTRUCTION	MAR 2004	RLT		
	REGULATORY APPROVAL	NOV 2003	RLT		
	PRELIMINARY DESIGN	NOV 2002	RLT		
NO.	ISSUED FOR	DATE	BY	APPROVED	

THIS DOCUMENT ORIGINALLY ISSUED FOR CONSTRUCTION AND SEALED BY ROBERT S. DIFIORE, SEAL NO. 22769

RECORD DRAWING

THIS DRAWING HAS BEEN MODIFIED TO REFLECT FIELD CHANGES REPORTED BY THE CONTRACTOR OR ANOTHER PARTY, BUT NOT VERIFIED BY THE CERTIFYING ENGINEER. THIS DOCUMENT ORIGINALLY ISSUED AND SEALED BY DAVID A. NAILOR, 025465. THIS MEDIA SHALL NOT BE CONSIDERED A CERTIFIED DOCUMENT.

THIS DOCUMENT ORIGINALLY ISSUED FOR CONSTRUCTION AND SEALED BY RONALD L. TAYLOR, SEAL NO. 024649

**HAZEN AND SAWYER**  
Environmental Engineers & Scientists  
4011 WestChase Blvd, Raleigh, North Carolina 27607

CITY OF ROANOKE  
VIRGINIA  
REGIONAL WATER POLLUTION CONTROL PLANT  
WET WEATHER IMPROVEMENTS

PRIMARY SLUDGE PUMP STATION NO.1  
MECHANICAL  
PLANS - DEMOLITION

THE SCALE BAR SHOWN BELOW MEASURES ONE INCH LONG ON THE ORIGINAL DRAWING.	DATE	JULY 2003
	H & S JOB NUMBER	30788A
	CONTRACT NUMBER	A
	DRAWING NUMBER	M220