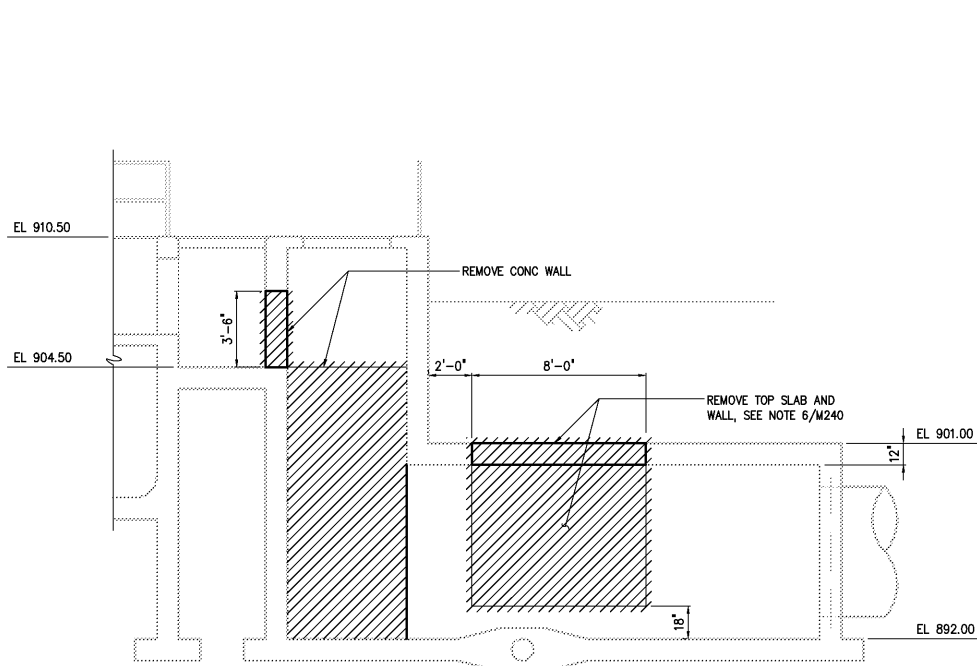
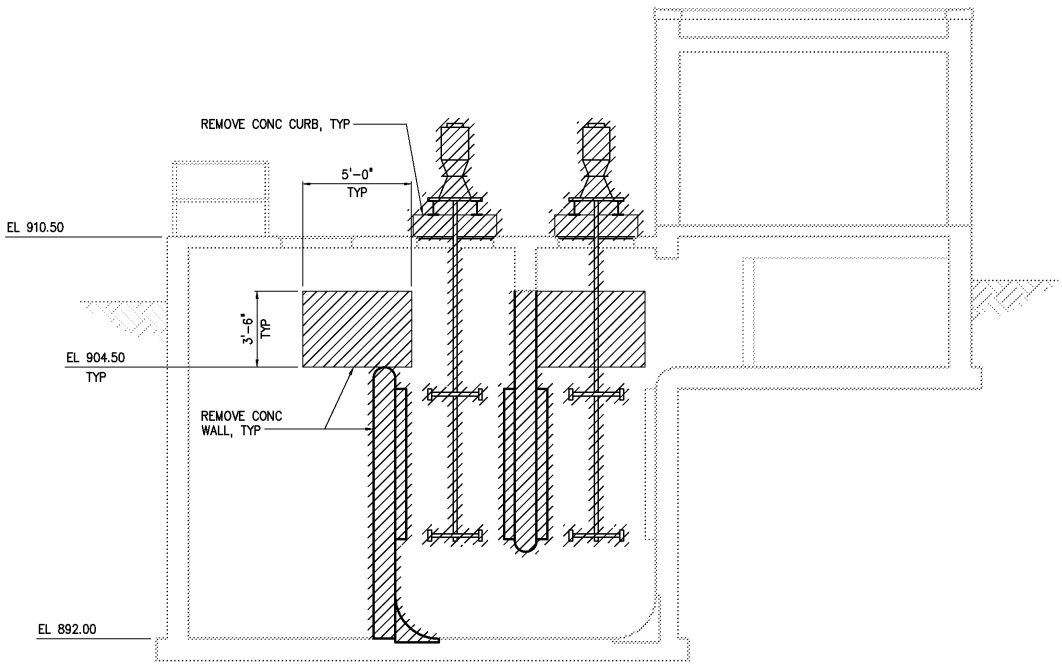


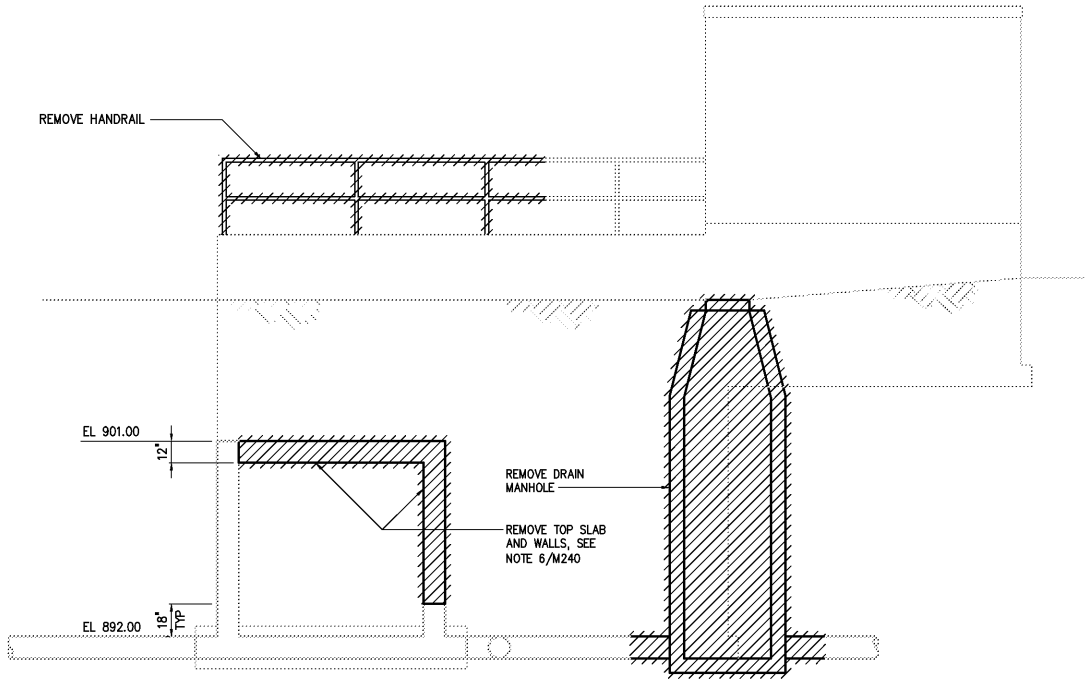
NOTES:
1 CONCRETE IN AREA INDICATED SHALL BE REMOVED BY MECHANICAL MEANS SO THAT EXISTING REINFORCING IS NOT CUT



SECTION A
1/4"=1'-0" M240



SECTION B
1/4"=1'-0" M240



SECTION C
1/4"=1'-0" M240

| | | | | | |
|-----|---------------------|----------|-----|-------------|---------|
| | | | | DESIGNED | H & S |
| | | | | DRAWN | RWB/WGL |
| | | | | CHECKED | |
| | RECORD DRAWINGS | MAR 2008 | RLT | PROJ. ENGR. | DAN |
| | CONSTRUCTION | MAR 2004 | RLT | | |
| | REGULATORY APPROVAL | NOV 2003 | RLT | | |
| | PRELIMINARY DESIGN | NOV 2002 | RLT | | |
| NO. | ISSUED FOR | DATE | BY | APPROVED | |

THIS DOCUMENT ORIGINALLY ISSUED FOR CONSTRUCTION AND SEALED BY ROBERT S. DIFIORE, SEAL NO. 22769

RECORD DRAWING

THIS DRAWING HAS BEEN MODIFIED TO REFLECT FIELD CHANGES REPORTED BY THE CONTRACTOR OR ANOTHER PARTY, BUT NOT VERIFIED BY THE CERTIFYING ENGINEER. THIS DOCUMENT ORIGINALLY ISSUED AND SEALED BY DAVID A. NAILOR, 025465. THIS MEDIA SHALL NOT BE CONSIDERED A CERTIFIED DOCUMENT.

THIS DOCUMENT ORIGINALLY ISSUED FOR CONSTRUCTION AND SEALED BY RONALD L. TAYLOR, SEAL NO. 024649

HAZEN AND SAWYER
Environmental Engineers & Scientists
4011 WestChase Blvd, Raleigh, North Carolina 27607

CITY OF ROANOKE
VIRGINIA

REGIONAL WATER POLLUTION CONTROL PLANT
WET WEATHER IMPROVEMENTS

PRIMARY CLARIFIER NOS 4-6 MODIFICATIONS
MECHANICAL
SECTIONS - DEMOLITION

THE SCALE BAR SHOWN BELOW MEASURES ONE INCH LONG ON THE ORIGINAL DRAWING.

| | |
|------------------|-----------|
| DATE | JULY 2003 |
| H & S JOB NUMBER | 30788A |
| CONTRACT NUMBER | A |
| DRAWING NUMBER | M241 |