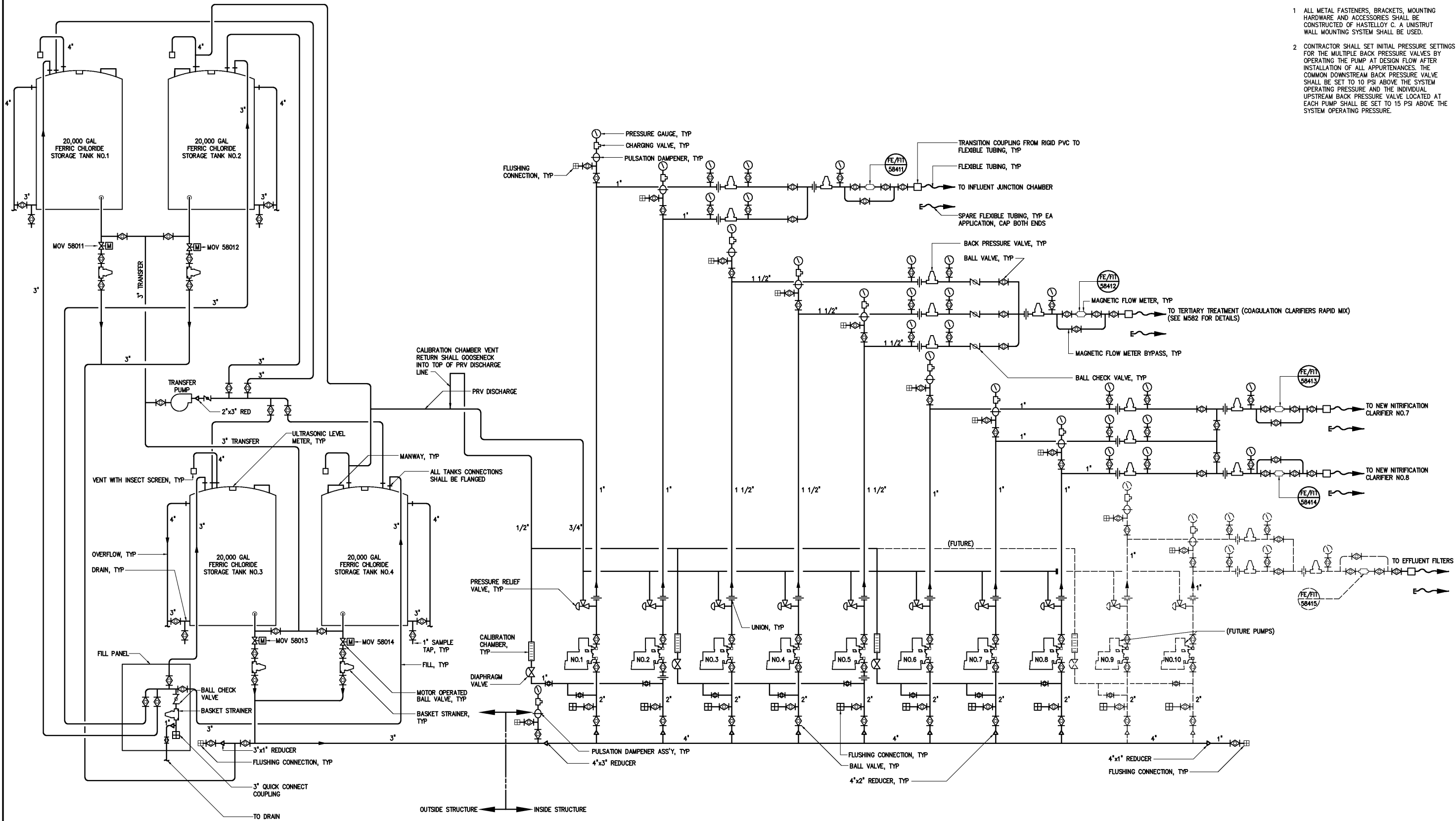


- NOTES:
- 1 ALL METAL FASTENERS, BRACKETS, MOUNTING HARDWARE AND ACCESSORIES SHALL BE CONSTRUCTED OF HASTELLOY C. A UNISTRUT WALL MOUNTING SYSTEM SHALL BE USED.
 - 2 CONTRACTOR SHALL SET INITIAL PRESSURE SETTINGS FOR THE MULTIPLE BACK PRESSURE VALVES BY OPERATING THE PUMP AT DESIGN FLOW AFTER INSTALLATION OF ALL APPURTENANCES. THE COMMON DOWNSTREAM BACK PRESSURE VALVE SHALL BE SET TO 10 PSI ABOVE THE SYSTEM OPERATING PRESSURE AND THE INDIVIDUAL UPSTREAM BACK PRESSURE VALVE LOCATED AT EACH PUMP SHALL BE SET TO 15 PSI ABOVE THE SYSTEM OPERATING PRESSURE.



FERRIC CHLORIDE SCHEMATIC
NO SCALE

				DESIGNED	ABL	THIS DOCUMENT ORIGINALLY ISSUED FOR CONSTRUCTION AND SEALED BY ROBERT S. DIFIORE, SEAL NO. 22769	RECORD DRAWING	<div>HAZEN AND SAWYER</div> <div>Environmental Engineers & Scientists</div> <div>4011 WestChase Blvd, Raleigh, North Carolina 27607</div>	CITY OF ROANOKE VIRGINIA	COAGULATION CHEMICAL FEED FACILITIES	THE SCALE BAR SHOWN BELOW MEASURES ONE INCH LONG ON THE ORIGINAL DRAWING.	DATE	JULY 2003	
				DRAWN	BRC							H & S JOB NUMBER	30788A	
				CHECKED								CONTRACT NUMBER	DRAWING NUMBER	
	RECORD DRAWINGS	MAR 2008	RLT	PROJ. ENGR.	DAN							A	M583	
	CONSTRUCTION	MAR 2004	RLT											
	REGULATORY APPROVAL	NOV 2003	RLT											
	PRELIMINARY DESIGN	NOV 2002	RLT											
NO.	ISSUED FOR	DATE	BY	APPROVED		THIS DOCUMENT ORIGINALLY ISSUED FOR CONSTRUCTION AND SEALED BY RONALD L. TAYLOR, SEAL NO. 024649			REGIONAL WATER POLLUTION CONTROL PLANT WET WEATHER IMPROVEMENTS					