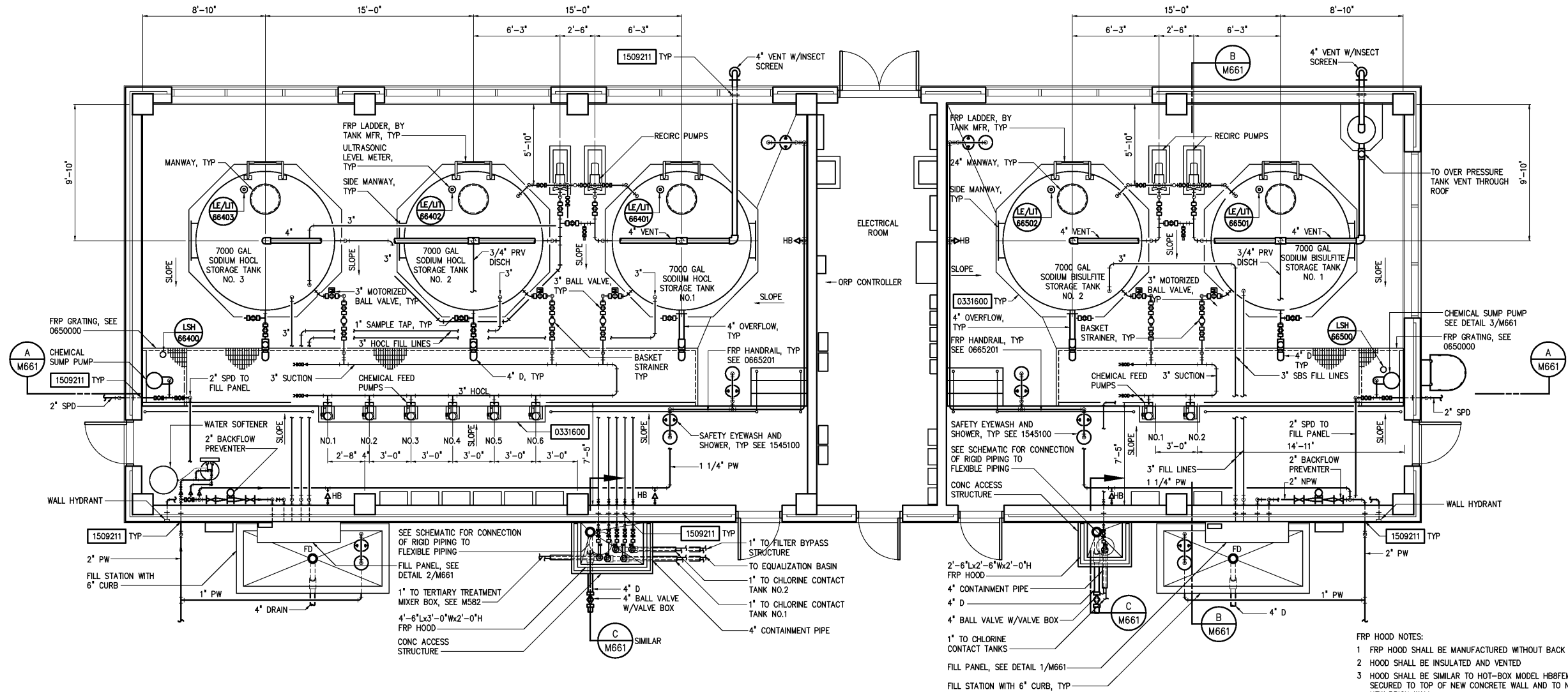


NOTES:

- 1 CONTRACTOR SHALL ROUTE A 3" DRAIN LINE FROM SUMP PUMP TO FILL STATION FOR SPILL RECOVERY, TYP FOR BOTH SUMPS IN CHEMICAL AREAS.
- 2 ALL METAL FASTENERS, BRACKETS, MOUNTING HARDWARE AND ACCESSORIES IN SODIUM HYPOCHLORITE AREA SHALL BE CONSTRUCTED OF HASTELLOY C. ALL METAL FASTENERS, BRACKETS, MOUNTING HARDWARE AND ACCESSORIES IN SODIUM BISULFITE AREA SHALL BE CONSTRUCTED OF 316 SST. A PVC COATED MOUNTING SYSTEM SHALL BE USED, SEE SPECS.
- 3 CHEMICAL PIPING SHOWN IS PICTORAL ONLY AND CONTRACTOR SHALL INSTALL PIPING, VALVES, ETC AS REQUIRED.



BOTTOM PLAN

1/4"=1'-0"

- FRP HOOD NOTES:
- 1 FRP HOOD SHALL BE MANUFACTURED WITHOUT BACK SIDE
- 2 HOOD SHALL BE INSULATED AND VENTED
- 3 HOOD SHALL BE SIMILAR TO HOT-BOX MODEL HBBFEM AND SECURED TO TOP OF NEW CONCRETE WALL AND TO NEW NEW BRICK WALL
- 4 PROVIDE CAULKING AT JUNCTURE WITH CONCRETE AND BRICK SURFACES
- 5 DOUBLE LEAF ACCESS DOOR SHALL BE HINGED AT TOP
- 6 PROVIDE SAFETY CHAIN MOUNTED TO MASONRY WALL TO SECURE ACCESS DOORS IN OPEN POSITION
- 7 ALL HARDWARE, ANCHORAGE, HINGES AND CHAINS SHALL BE TYPE 316 STAINLESS STEEL

DESIGNED	ABL
DRAWN	BRC
CHECKED	
PROJ. ENGR.	DAN
APPROVED	
NO.	
RECORD DRAWINGS	MAR 2008
CONSTRUCTION	MAR 2004
REGULATORY APPROVAL	NOV 2003
PRELIMINARY DESIGN	NOV 2002
ISSUED FOR	DATE
	BY

THIS DOCUMENT ORIGINALLY ISSUED FOR CONSTRUCTION AND SEALED BY ROBERT S. DIFIORE, SEAL NO. 22769

RECORD DRAWING

THIS DRAWING HAS BEEN MODIFIED TO REFLECT FIELD CHANGES REPORTED BY THE CONTRACTOR OR ANOTHER PARTY, BUT NOT VERIFIED BY THE CERTIFYING ENGINEER. THIS DOCUMENT ORIGINALLY ISSUED AND SEALED BY DAVID A. NAILOR, 025465. THIS MEDIA SHALL NOT BE CONSIDERED A CERTIFIED DOCUMENT.

THIS DOCUMENT ORIGINALLY ISSUED FOR CONSTRUCTION AND SEALED BY RONALD L. TAYLOR, SEAL NO. 024649

**Hazen and Sawyer**  
Environmental Engineers & Scientists  
4011 WestChase Blvd, Raleigh, North Carolina 27607

CITY OF ROANOKE  
VIRGINIA  
REGIONAL WATER POLLUTION CONTROL PLANT  
WET WEATHER IMPROVEMENTS

DISINFECTION CHEMICAL FEED FACILITIES  
MECHANICAL  
BOTTOM PLAN

THE SCALE BAR SHOWN BELOW MEASURES ONE INCH LONG ON THE ORIGINAL DRAWING.	DATE	JULY 2003
	H & S JOB NUMBER	30788A
	CONTRACT NUMBER	A
	DRAWING NUMBER	M660