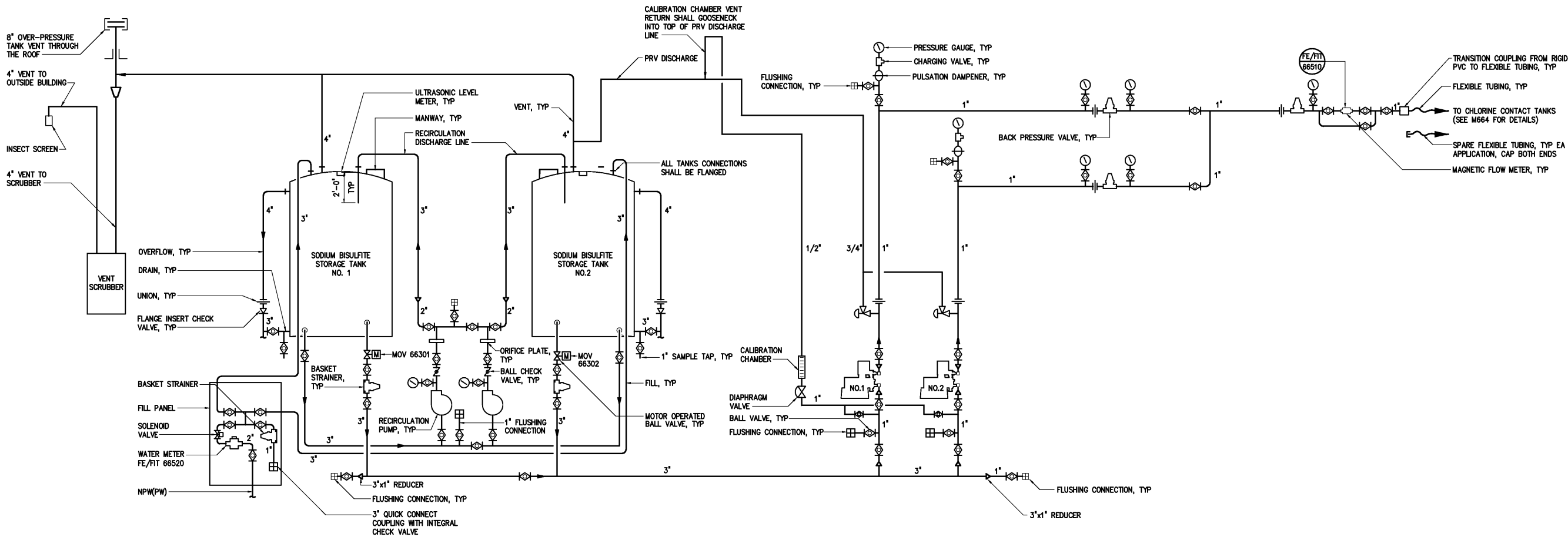


- NOTES:
- 1 ALL METALLIC FASTENERS, BRACKETS, MOUNTING HARDWARE, AND ACCESSORIES LOCATED IN SODIUM BISULFITE STORAGE AND FEED AREAS SHALL BE CONSTRUCTED OF 316 STAINLESS STEEL.
 - 2 NON-POTABLE WATER IN INDICATED 2" NPW FOR SODIUM BISULFITE DILUTION COMES FROM POTABLE WATER SOURCES (CITY WATER). NPW PIPING SHALL NOT BE CONNECTED TO ANY OTHER NPW IN THE PLANT.
 - 3 CONTRACTOR SHALL SET INITIAL PRESSURE SETTINGS FOR THE MULTIPLE BACK PRESSURE VALVES BY OPERATING THE PUMP AT DESIGN FLOW AFTER INSTALLATION OF ALL APPURTENANCES. THE COMMON DOWNSTREAM BACK PRESSURE VALVE SHALL BE SET TO 10 PSI ABOVE THE SYSTEM OPERATING PRESSURE AND THE INDIVIDUAL UPSTREAM BACK PRESSURE VALVE LOCATED AT EACH PUMP SHALL BE SET TO 15 PSI ABOVE THE SYSTEM OPERATING PRESSURE.



SODIUM BISULFITE SCHEMATIC
NO SCALE

DESIGNED ABL				RECORD DRAWING		CITY OF ROANOKE VIRGINIA		DISINFECTION CHEMICAL FEED FACILITIES		THE SCALE BAR SHOWN BELOW MEASURES ONE INCH LONG ON THE ORIGINAL DRAWING.		DATE JULY 2003	
DRAWN BRC				THIS DOCUMENT ORIGINALLY ISSUED FOR CONSTRUCTION AND SEALED BY ROBERT S. DIFIORE, SEAL NO. 22769		HAZEN AND SAWYER Environmental Engineers & Scientists 4011 WestChase Blvd, Raleigh, North Carolina 27607		REGIONAL WATER POLLUTION CONTROL PLANT WET WEATHER IMPROVEMENTS		H & S JOB NUMBER 30788A		CONTRACT NUMBER A	
CHECKED				THIS DRAWING HAS BEEN MODIFIED TO REFLECT FIELD CHANGES REPORTED BY THE CONTRACTOR OR ANOTHER PARTY, BUT NOT VERIFIED BY THE CERTIFYING ENGINEER. THIS DOCUMENT ORIGINALLY ISSUED AND SEALED BY DAVID A. NAILOR, 025465. THIS MEDIA SHALL NOT BE CONSIDERED A CERTIFIED DOCUMENT.						DRAWING NUMBER M663			
PROJ. ENGR. DAN				THIS DOCUMENT ORIGINALLY ISSUED FOR CONSTRUCTION AND SEALED BY RONALD L. TAYLOR, SEAL NO. 024649									
NO.				ISSUED FOR									
DATE				BY									
APPROVED													