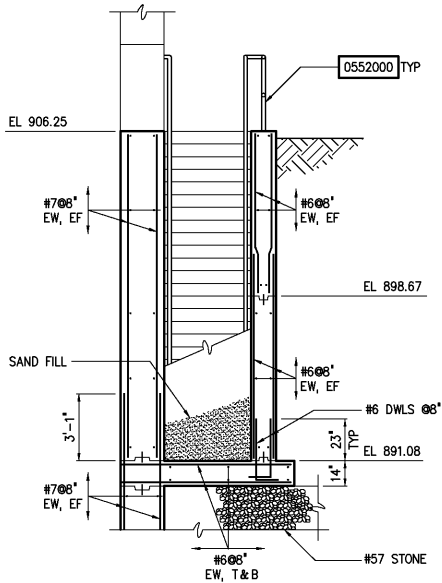
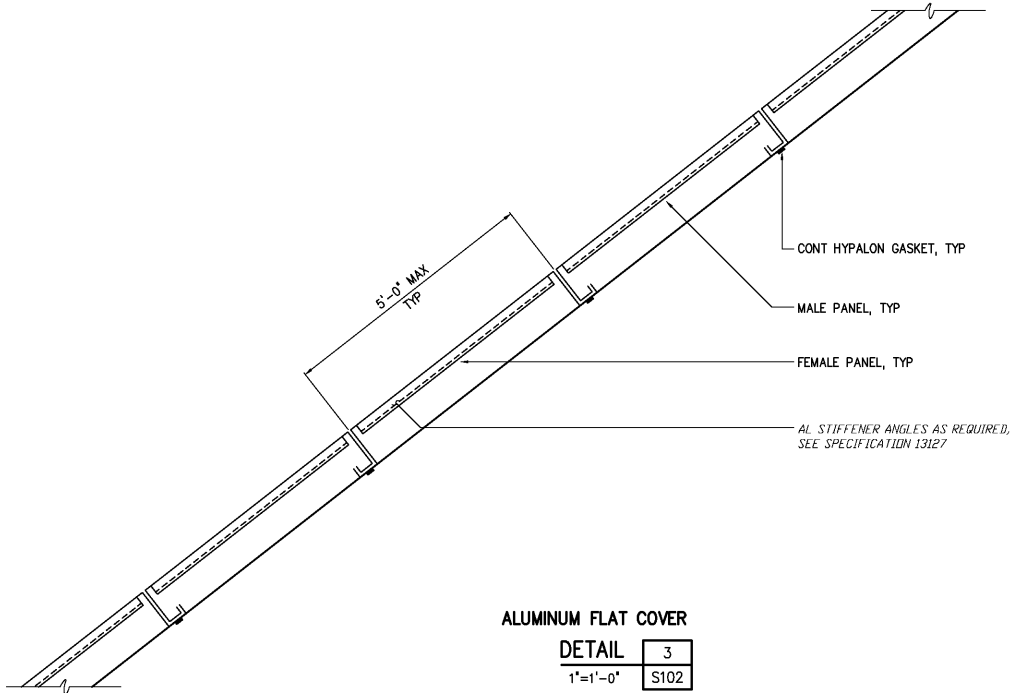


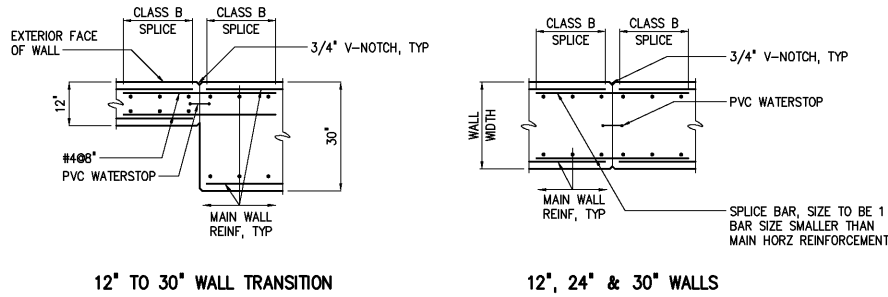
- NOTES:
- SEE SPECIFICATION SECTION 13127 FOR ALUMINUM FLAT COVERS.
  - EACH ROW OF AL FLAT COVERS SHALL HAVE AN OSHA WARNING SIGN PERMANENTLY ATTACHED TO ONE FLAT COVER PER ROW (5 SIGNS TOTAL). WARNING SIGN SHALL BE THE MODEL M5052 14"x10" ALUMINUM BY SETON IDENTIFICATION PRODUCTS. THE WORDING SHALL BE "MAXIMUM LIVE LOAD = 75 PSF".



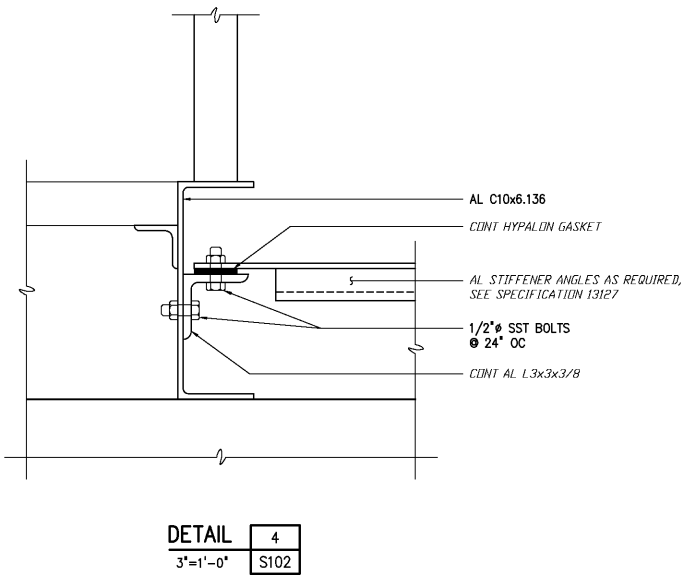
SECTION J  
1/4"=1'-0" S101



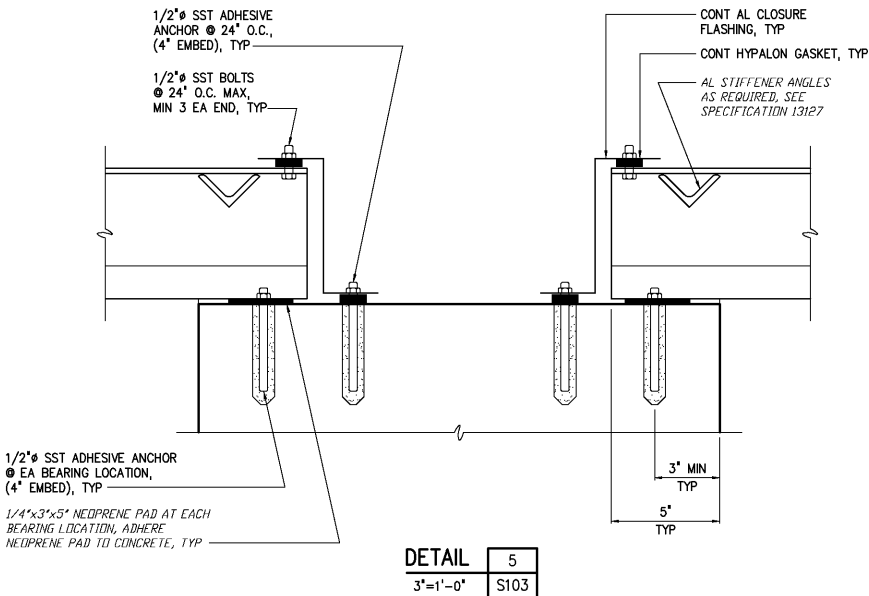
ALUMINUM FLAT COVER  
DETAIL 3  
1'=1'-0" S102



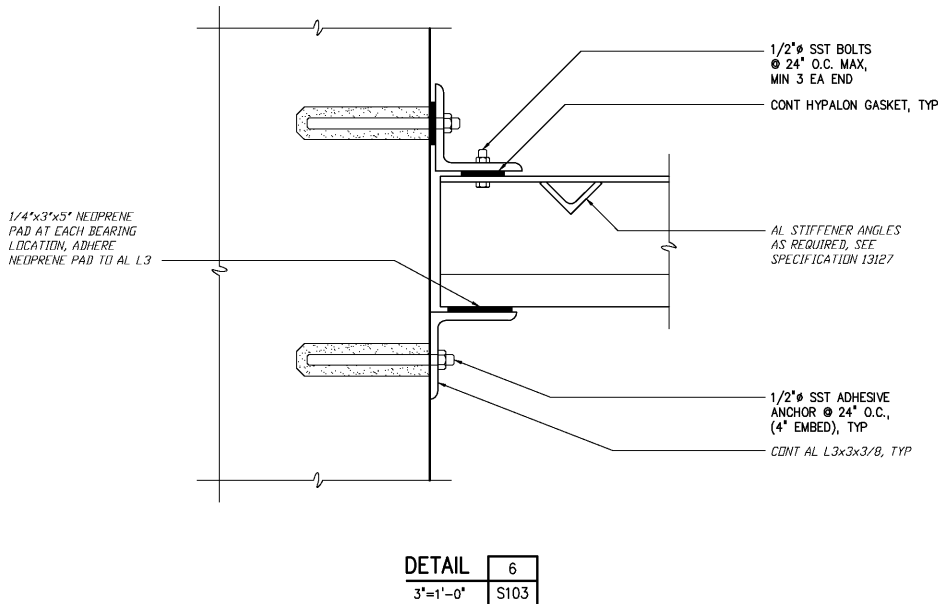
CONTRACTION JOINT  
DETAIL 7  
1/2"=1'-0" S100



DETAIL 4  
3"=1'-0" S102



DETAIL 5  
3"=1'-0" S103



DETAIL 6  
3"=1'-0" S103

				DESIGNED	WGL
				DRAWN	WGL
				CHECKED	
		RECORD DRAWINGS	MAR 2008	RLT	
		CONSTRUCTION	MAR 2004	RLT	
		REGULATORY APPROVAL	NOV 2003	RLT	PROJ. ENGR. DAN
		PRELIMINARY DESIGN	NOV 2002	RLT	
NO.		ISSUED FOR	DATE	BY	APPROVED

THIS DOCUMENT ORIGINALLY ISSUED FOR CONSTRUCTION AND SEALED BY ROBERT S. DIFIORE, SEAL NO. 22769

RECORD DRAWING

THIS DRAWING HAS BEEN MODIFIED TO REFLECT FIELD CHANGES REPORTED BY THE CONTRACTOR OR ANOTHER PARTY, BUT NOT VERIFIED BY THE CERTIFYING ENGINEER. THIS DOCUMENT ORIGINALLY ISSUED AND SEALED BY CHRISTOPHER T. PHILLIPS, 033796. THIS MEDIA SHALL NOT BE CONSIDERED A CERTIFIED DOCUMENT.

THIS DOCUMENT ORIGINALLY ISSUED FOR CONSTRUCTION AND SEALED BY RONALD L. TAYLOR, SEAL NO. 024649

**Hazen and Sawyer**  
Environmental Engineers & Scientists  
4011 WestChase Blvd, Raleigh, North Carolina 27607

CITY OF ROANOKE  
VIRGINIA

REGIONAL WATER POLLUTION CONTROL PLANT  
WET WEATHER IMPROVEMENTS

INFLUENT PUMP STATION  
STRUCTURAL  
SECTIONS AND DETAILS

THE SCALE BAR SHOWN BELOW MEASURES ONE INCH LONG ON THE ORIGINAL DRAWING.	DATE JULY 2003
H & S JOB NUMBER 30788A	CONTRACT NUMBER A
DRAWING NUMBER S104	