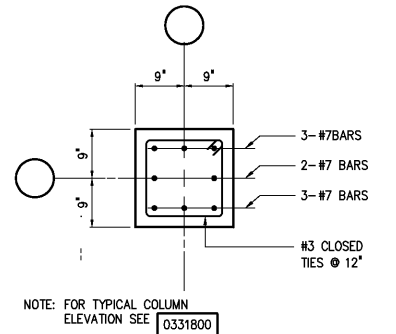
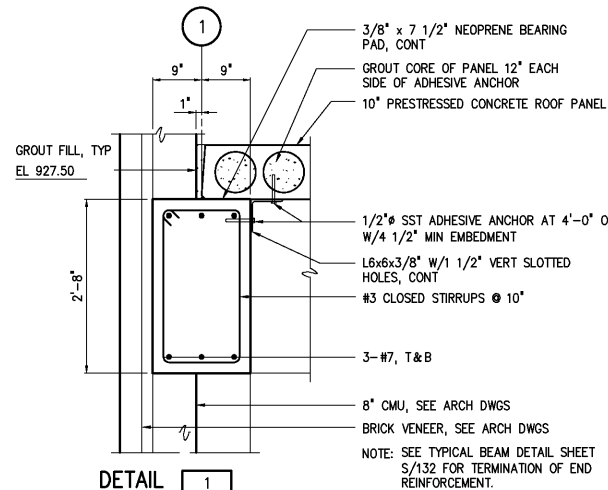


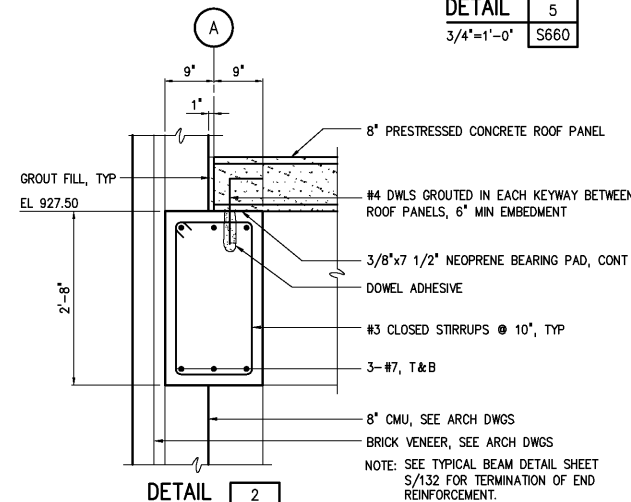
- NOTES:
- 1 ALL PIPING BELOW CHEMICAL FEED FACILITY SHALL BE ENCASED IN CLASS "B" CONCRETE. ENCASEMENT SHALL BE A MINIMUM OF 6" THICK AROUND PIPE. ALL CONCRETE ENCASEMENT SHALL EXTEND OUT TO EDGE OF FOOTING.
 - 2 ALL METAL FASTENERS, BRACKETS, MOUNTING HARDWARE AND ACCESSORIES IN SODIUM HYPOCHLORITE AREA SHALL BE CONSTRUCTED OF HASTELLOY C. ALL METAL FASTENERS, BRACKETS, MOUNTING HARDWARE AND ACCESSORIES IN SODIUM BISULFITE AREA SHALL BE CONSTRUCTED OF 316 SST. A PVC COATED UNISTRUT WALL MOUNTING SYSTEM SHALL BE USED.
 - 3 SUBGRADE SHALL BE INSPECTED BY GEOTECHNICAL ENGINEER PRIOR TO PLACING OF GEOTEXTILE FABRIC AND STONE BASE.



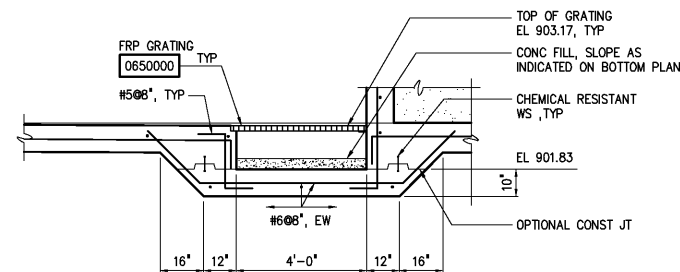
TYPICAL COLUMN
DETAIL 5
3/4"=1'-0" S660



DETAIL 1
3/4"=1'-0" S662



DETAIL 2
3/4"=1'-0" S662



DETAIL 3
3/8"=1'-0" S662

DESIGNED	WGL/DDZ
DRAWN	DDZ
CHECKED	
PROJ. ENGR.	DAN
APPROVED	
NO.	

THIS DOCUMENT ORIGINALLY ISSUED FOR CONSTRUCTION AND SEALED BY ROBERT S. DIFIORE, SEAL NO. 22769

THIS DOCUMENT ORIGINALLY ISSUED FOR CONSTRUCTION AND SEALED BY RONALD L. TAYLOR, SEAL NO. 024649

RECORD DRAWING

THIS DRAWING HAS BEEN MODIFIED TO REFLECT FIELD CHANGES REPORTED BY THE CONTRACTOR OR ANOTHER PARTY, BUT NOT VERIFIED BY THE CERTIFYING ENGINEER. THIS DOCUMENT ORIGINALLY ISSUED AND SEALED BY CHRISTOPHER T. PHILLIPS, 033796. THIS MEDIA SHALL NOT BE CONSIDERED A CERTIFIED DOCUMENT.

Hazen and Sawyer
Environmental Engineers & Scientists
4011 WestChase Blvd, Raleigh, North Carolina 27607

CITY OF ROANOKE
VIRGINIA
REGIONAL WATER POLLUTION CONTROL PLANT
WET WEATHER IMPROVEMENTS

DISINFECTION CHEMICAL FEED FACILITIES
STRUCTURAL
SECTIONS AND DETAILS

THE SCALE BAR SHOWN BELOW MEASURES ONE INCH LONG ON THE ORIGINAL DRAWING.	DATE	JULY 2003
	H & S JOB NUMBER	30788A
	CONTRACT NUMBER	A
	DRAWING NUMBER	S662