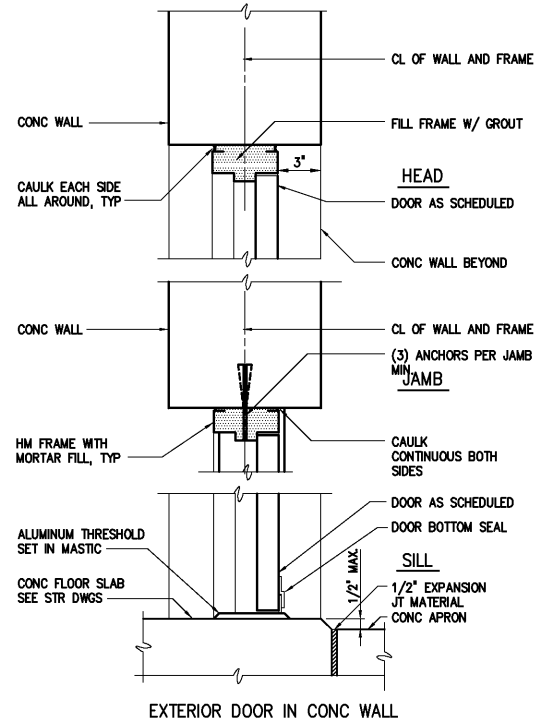
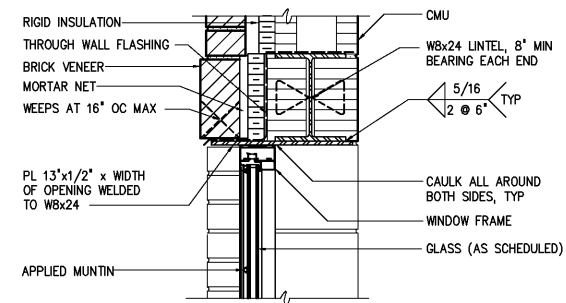


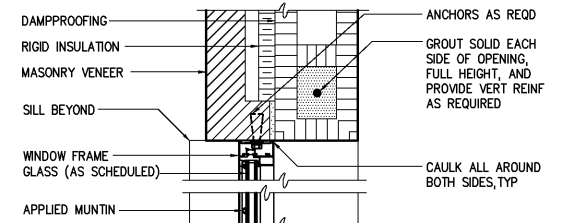
EXTERIOR DOOR IN CONC WALL
0810009



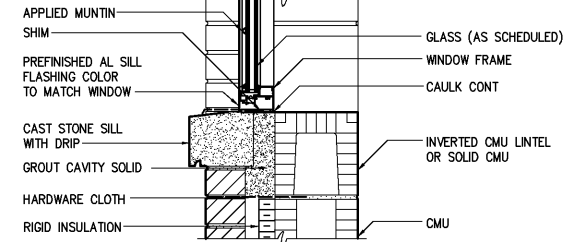
EXTERIOR DOOR IN CONC WALL



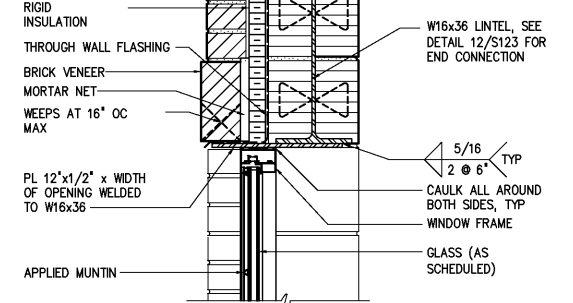
EXTERIOR WINDOW HEAD



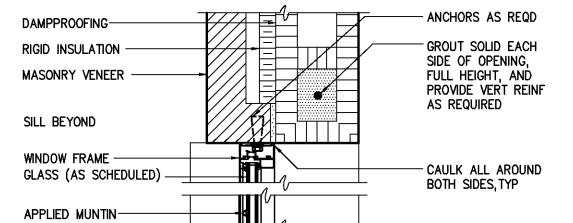
EXTERIOR WINDOW JAMB



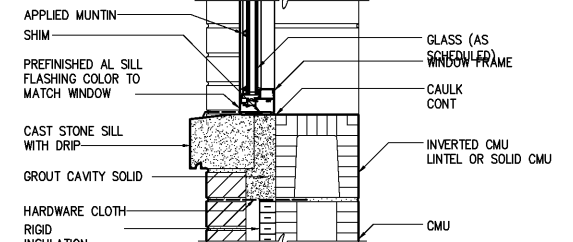
EXTERIOR WINDOW SILL



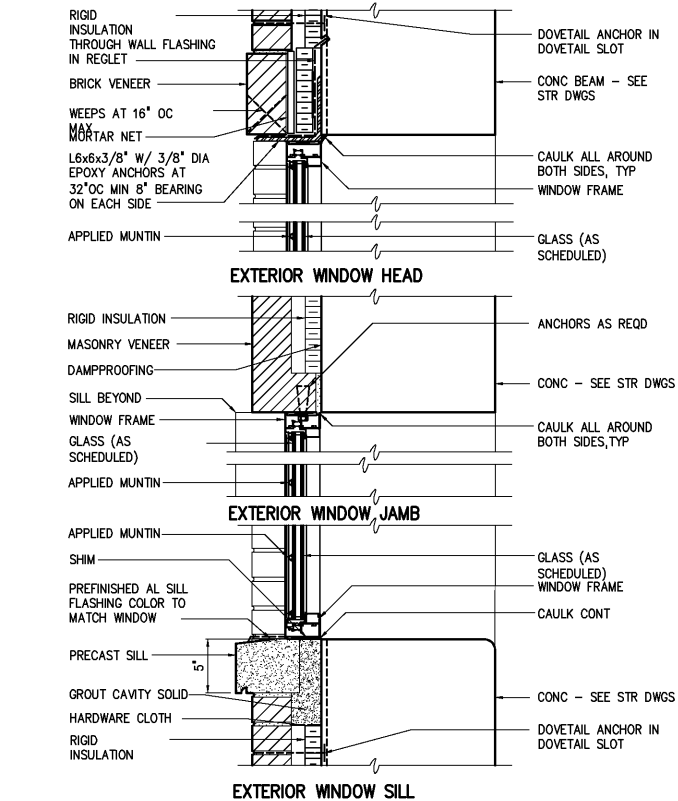
EXTERIOR WINDOW HEAD



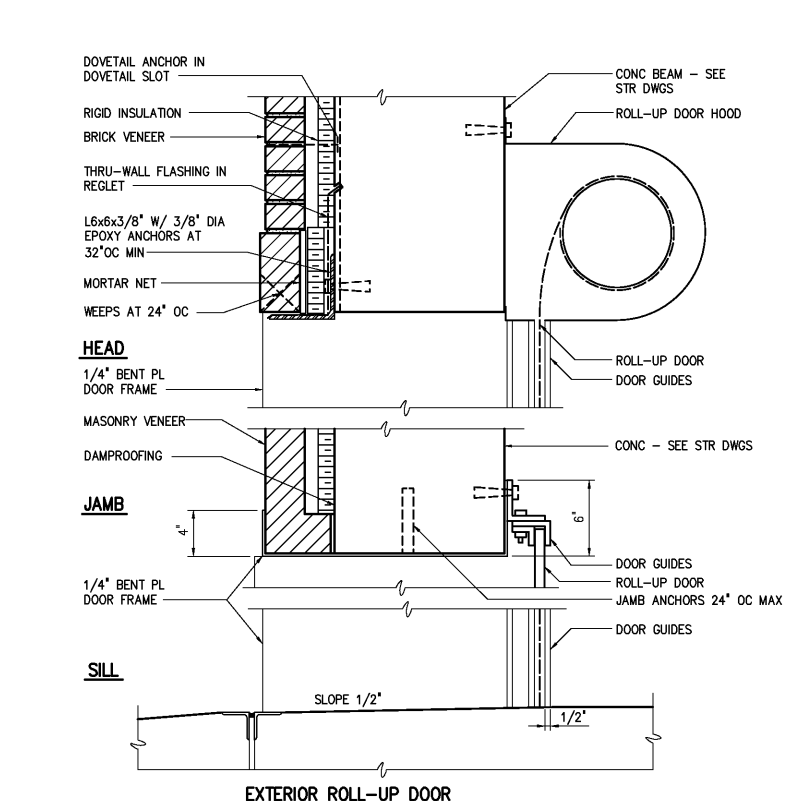
EXTERIOR WINDOW JAMB



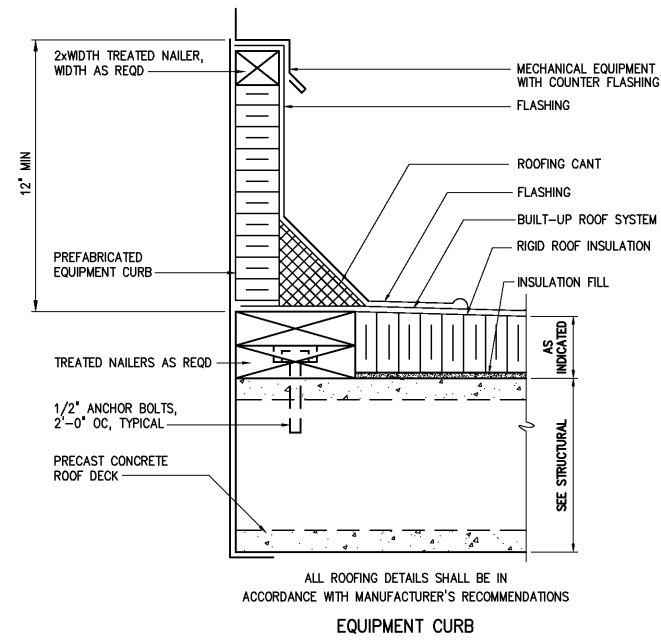
EXTERIOR WINDOW SILL



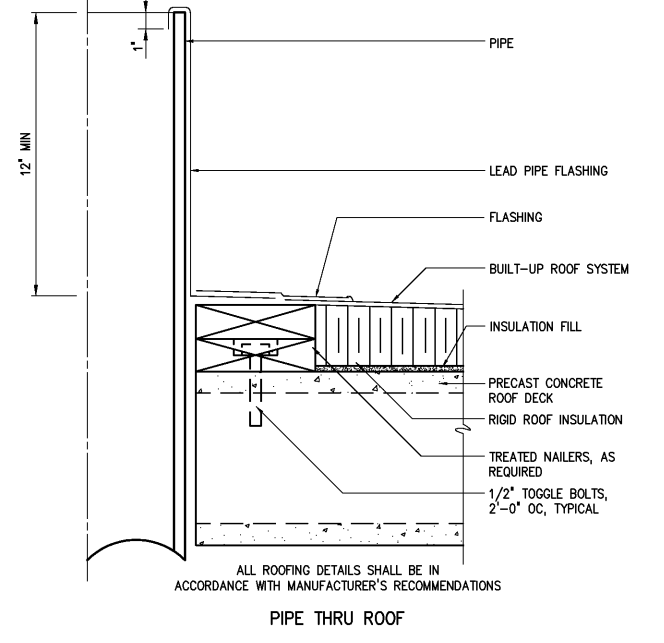
DETAIL	17
1 1/2"=1'-0"	A4



DETAIL	18
1 1/2" = 1'-0"	A4



DETAIL	19
1 1/2" = 1'-0"	A4



DETAIL	20
1 1/2" = 1'-0"	A4

				DESIGNED	WHR /DAW
				DRAWN	ALB /LRU
				CHECKED	
	RECORD DRAWINGS	MAR 2008	RLT	PROJ. ENGR.	DAN
	CONSTRUCTION	MAR 2004	RLT		
	REGULATORY APPROVAL	NOV 2003	RLT		
	PRELIMINARY DESIGN	NOV 2002	RLT		
NO.	ISSUED FOR	DATE	BY	APPROVED	

THIS DOCUMENT ORIGINALLY ISSUED
FOR CONSTRUCTION AND SEALED BY
RONALD L. TAYLOR, SEAL NO. 024649

RECORD DRAWING

THIS DRAWING HAS BEEN MODIFIED TO REFLECT FIELD
CHANGES REPORTED BY THE CONTRACTOR OR ANOTHER
PARTY, BUT NOT VERIFIED BY THE CERTIFYING ENGINEER.
THIS DOCUMENT ORIGINALLY ISSUED AND SEALED BY
WILLIAM H. RUSSELL, SEAL NUMBER 008532. THIS MEDIA
SHALL NOT BE CONSIDERED A CERTIFIED DOCUMENT.

HAZEN AND SAWYER
Environmental Engineers & Scientists
4011 WestChase Blvd, Raleigh, North Carolina 27607

CITY OF ROANOKE
VIRGINIA

REGIONAL WATER POLLUTION CONTROL PLANT WET WEATHER IMPROVEMENTS

ARCHITECTURAL MISCELLANEOUS DETAILS

THE SCALE BAR SHOWN BELOW MEASURES ONE INCH LONG ON THE ORIGINAL DRAWING.	DATE JULY 2003	
	H & S JOB NUMBER 30788A	
	CONTRACT NUMBER A	DRAWING NUMBER A4