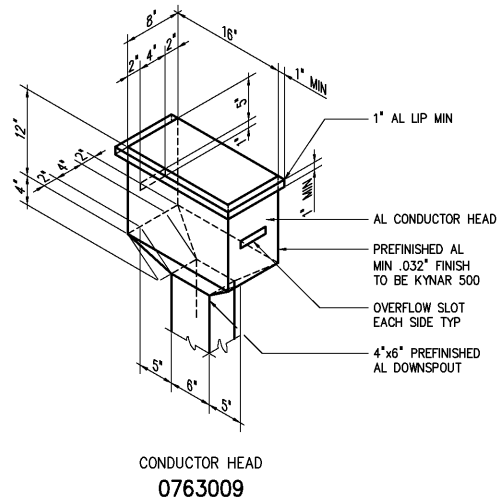


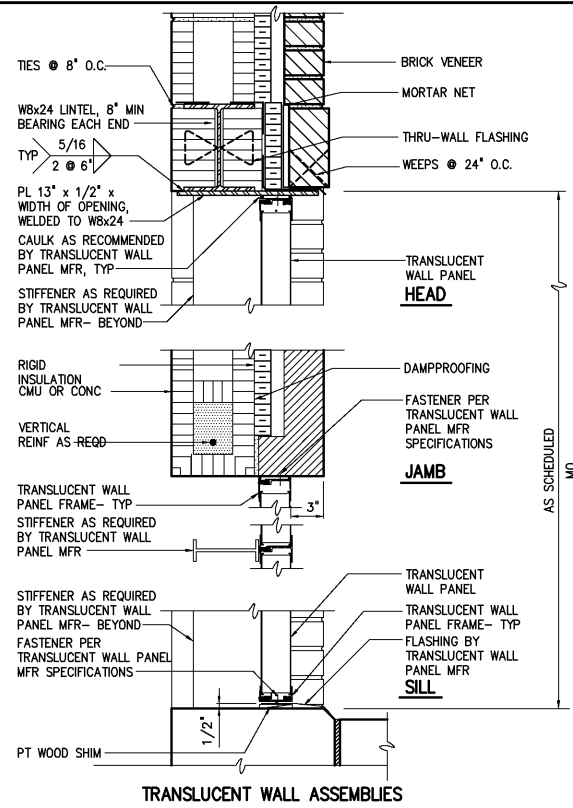
SCUPPER DETAIL

|              |    |
|--------------|----|
| DETAIL       | 21 |
| 1 1/2"=1'-0" | A5 |



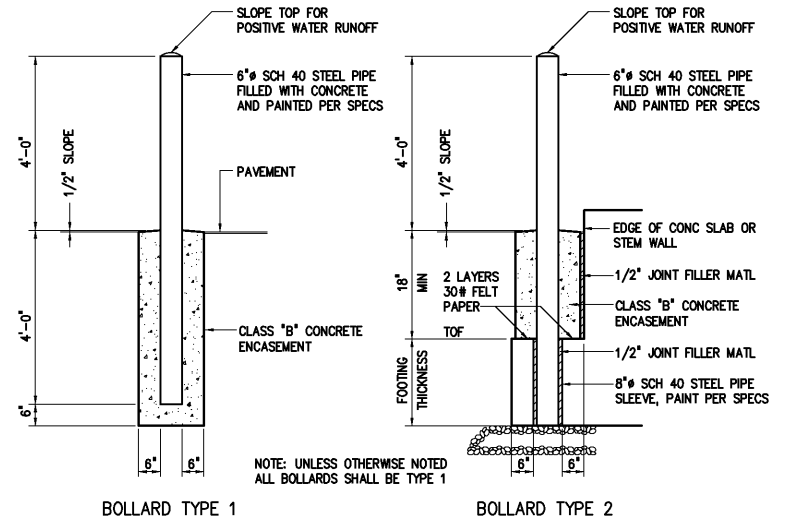
CONDUCTOR HEAD  
0763009

|              |    |
|--------------|----|
| DETAIL       | 22 |
| 1 1/2"=1'-0" | A5 |



TRANSLUCENT WALL ASSEMBLIES

|              |    |
|--------------|----|
| DETAIL       | 23 |
| 1 1/2"=1'-0" | A5 |

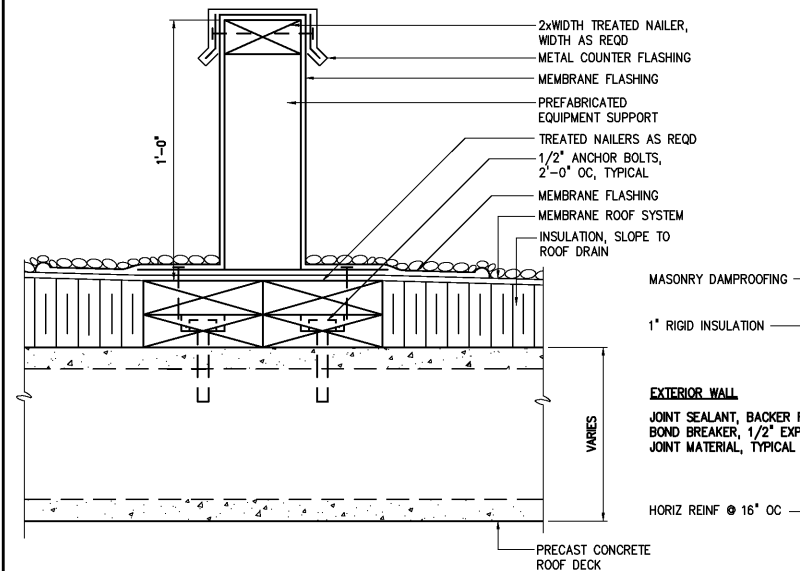


BOLLARD TYPE 1

0245100

BOLLARD TYPE 2

|            |    |
|------------|----|
| DETAIL     | 24 |
| 1/2"=1'-0" | A5 |

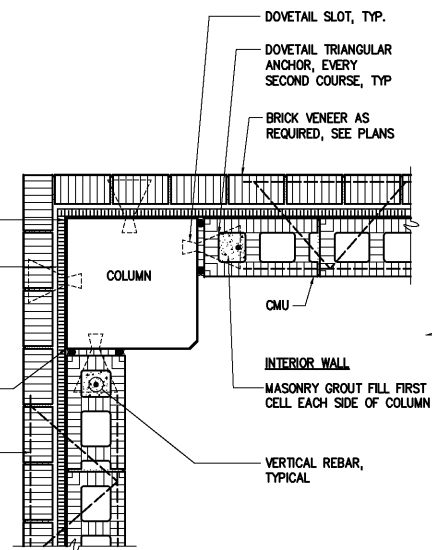


ALL ROOFING MEMBRANE DETAILS SHALL BE IN ACCORDANCE WITH MANUFACTURER'S RECOMMENDATIONS

EQUIPMENT SUPPORT

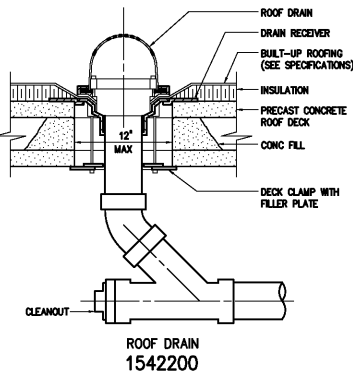
0750003

|              |    |
|--------------|----|
| DETAIL       | 25 |
| 1 1/2"=1'-0" | A5 |



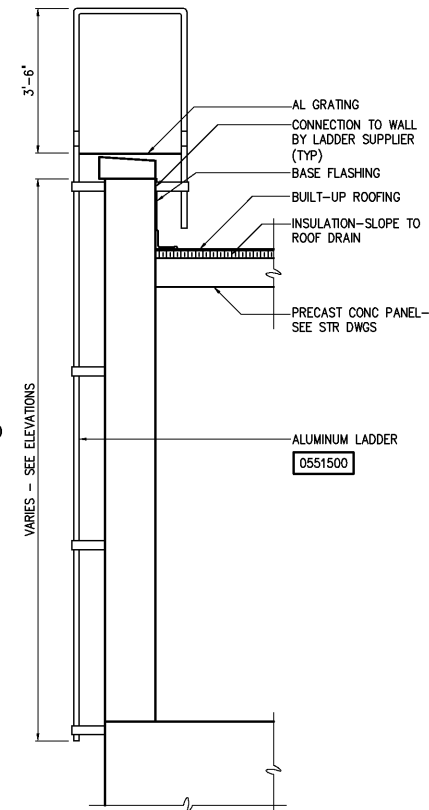
MASONRY TIE-IN AT COLUMN

|          |    |
|----------|----|
| DETAIL   | 26 |
| 1"=1'-0" | A5 |

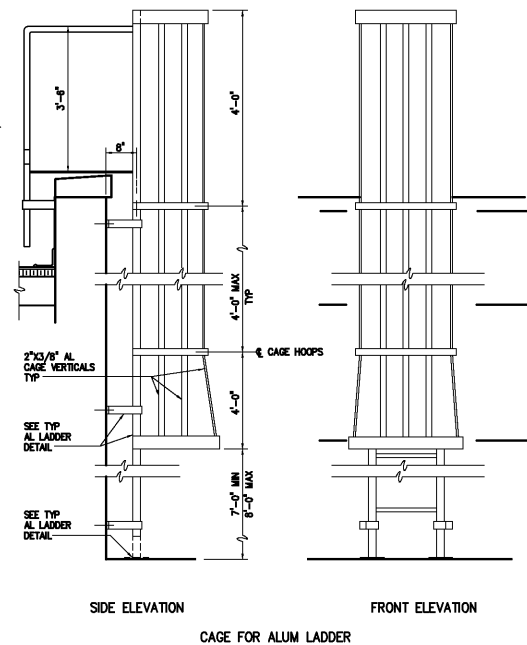


ROOF DRAIN  
1542200

|        |    |
|--------|----|
| DETAIL | 27 |
| NTS    | A5 |



|        |    |
|--------|----|
| DETAIL | 28 |
| NTS    | A5 |

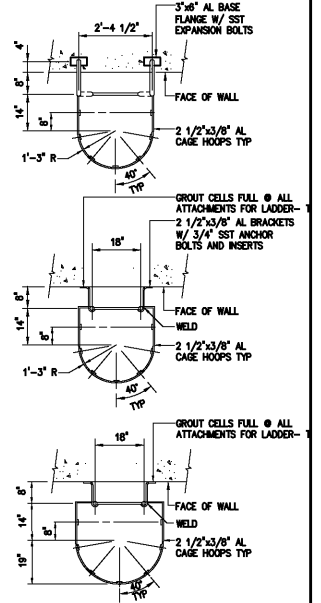


SIDE ELEVATION

FRONT ELEVATION

CAGE FOR ALUM LADDER

|        |    |
|--------|----|
| DETAIL | 29 |
| NTS    | A5 |



|                     |          |
|---------------------|----------|
| DESIGNED            | WHR/DAW  |
| DRAWN               | ALB/LRU  |
| CHECKED             |          |
| PROJ. ENGR.         | H & S    |
| APPROVED            |          |
| NO.                 |          |
| RECORD DRAWINGS     | MAR 2008 |
| CONSTRUCTION        | MAR 2004 |
| REGULATORY APPROVAL | NOV 2003 |
| PRELIMINARY DESIGN  | NOV 2002 |
| ISSUED FOR          |          |
| DATE                |          |
| BY                  |          |

THIS DOCUMENT ORIGINALLY ISSUED FOR CONSTRUCTION AND SEALED BY ROBERT S. DIFIORE, SEAL NO. 22769

THIS DOCUMENT ORIGINALLY ISSUED FOR CONSTRUCTION AND SEALED BY RONALD L. TAYLOR, SEAL NO. 024649

#### RECORD DRAWING

THIS DRAWING HAS BEEN MODIFIED TO REFLECT FIELD CHANGES REPORTED BY THE CONTRACTOR OR ANOTHER PARTY, BUT NOT VERIFIED BY THE CERTIFYING ENGINEER. THIS DOCUMENT ORIGINALLY ISSUED AND SEALED BY WILLIAM H. RUSSELL, SEAL NUMBER 008532. THIS MEDIA SHALL NOT BE CONSIDERED A CERTIFIED DOCUMENT.

**HAZEN AND SAWYER**  
Environmental Engineers & Scientists  
4011 WestChase Blvd, Raleigh, North Carolina 27607

**CITY OF ROANOKE**  
VIRGINIA

**REGIONAL WATER POLLUTION CONTROL PLANT**  
**WET WEATHER IMPROVEMENTS**

**ARCHITECTURAL**  
**MISCELLANEOUS DETAILS**

|   |                  |           |
|---|------------------|-----------|
| THE SCALE BAR SHOWN BELOW MEASURES ONE INCH LONG ON THE ORIGINAL DRAWING. | DATE             | JULY 2003 |
|   | H & S JOB NUMBER | 30788A    |
|   | CONTRACT NUMBER  | A         |
|   | DRAWING NUMBER   | A5        |