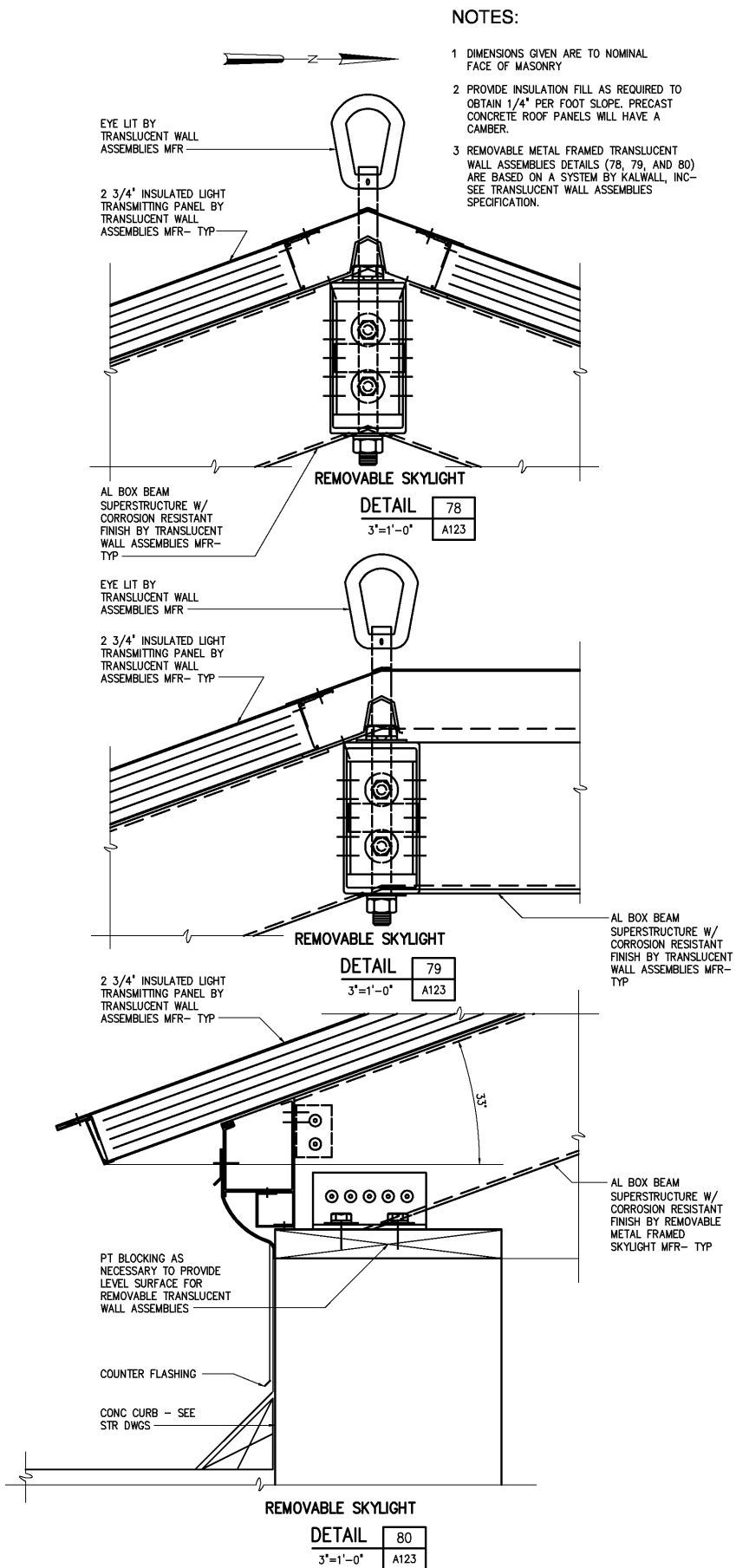


ROOF PLAN
3/16"=1'-0"



- NOTES:**
- 1 DIMENSIONS GIVEN ARE TO NOMINAL FACE OF MASONRY
 - 2 PROVIDE INSULATION FILL AS REQUIRED TO OBTAIN 1/4" PER FOOT SLOPE. PRECAST CONCRETE ROOF PANELS WILL HAVE A CAMBER.
 - 3 REMOVABLE METAL FRAMED TRANSLUCENT WALL ASSEMBLIES DETAILS (78, 79, AND 80) ARE BASED ON A SYSTEM BY KALWALL, INC- SEE TRANSLUCENT WALL ASSEMBLIES SPECIFICATION.

| | |
|-------------|---------|
| DESIGNED | WHR/DAW |
| DRAWN | ALB/DAW |
| CHECKED | |
| PROJ. ENGR. | DAN |
| APPROVED | |
| NO. | |
| ISSUED FOR | DATE |
| BY | |

THIS DOCUMENT ORIGINALLY ISSUED FOR CONSTRUCTION AND SEALED BY ROBERT S. DIFIORE, SEAL NO. 22769

THIS DOCUMENT ORIGINALLY ISSUED FOR CONSTRUCTION AND SEALED BY RONALD L. TAYLOR, SEAL NO. 024649

RECORD DRAWING

THIS DRAWING HAS BEEN MODIFIED TO REFLECT FIELD CHANGES REPORTED BY THE CONTRACTOR OR ANOTHER PARTY, BUT NOT VERIFIED BY THE CERTIFYING ENGINEER. THIS DOCUMENT ORIGINALLY ISSUED AND SEALED BY WILLIAM H. RUSSELL, SEAL NUMBER 008532. THIS MEDIA SHALL NOT BE CONSIDERED A CERTIFIED DOCUMENT.

Hazen and Sawyer
Environmental Engineers & Scientists
4011 WestChase Blvd, Raleigh, North Carolina 27607

CITY OF ROANOKE
VIRGINIA

REGIONAL WATER POLLUTION CONTROL PLANT
WET WEATHER IMPROVEMENTS

PRELIMINARY TREATMENT FACILITIES
ARCHITECTURAL
ROOF PLAN

| | | |
|---|------------------|-----------|
| THE SCALE BAR SHOWN BELOW MEASURES ONE INCH LONG ON THE ORIGINAL DRAWING. | DATE | JULY 2003 |
| | H & S JOB NUMBER | 30788A |
| | CONTRACT NUMBER | A |
| | DRAWING NUMBER | A123 |