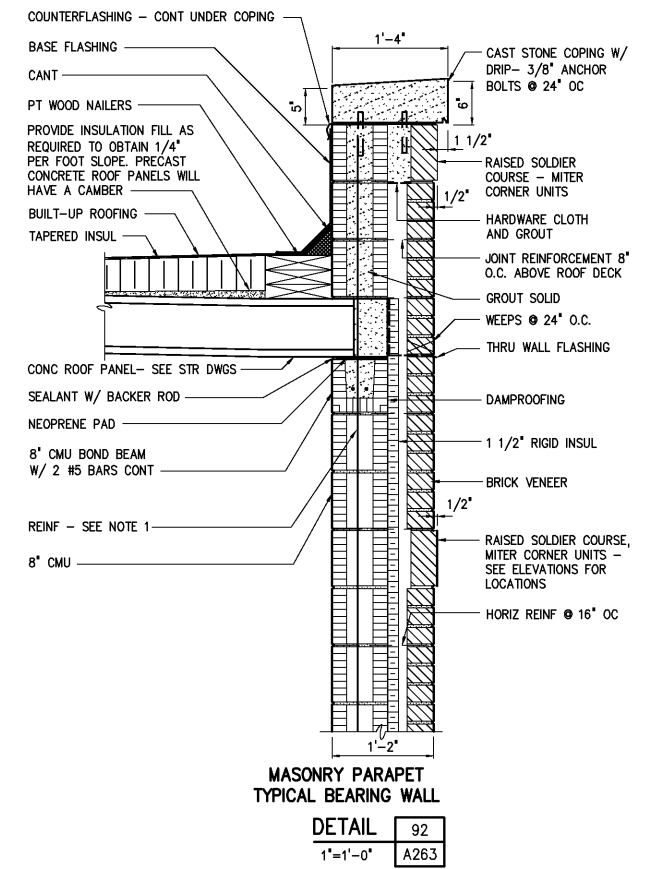
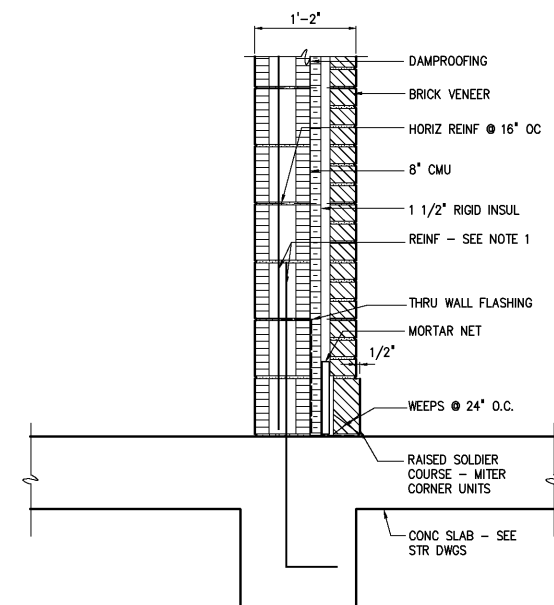
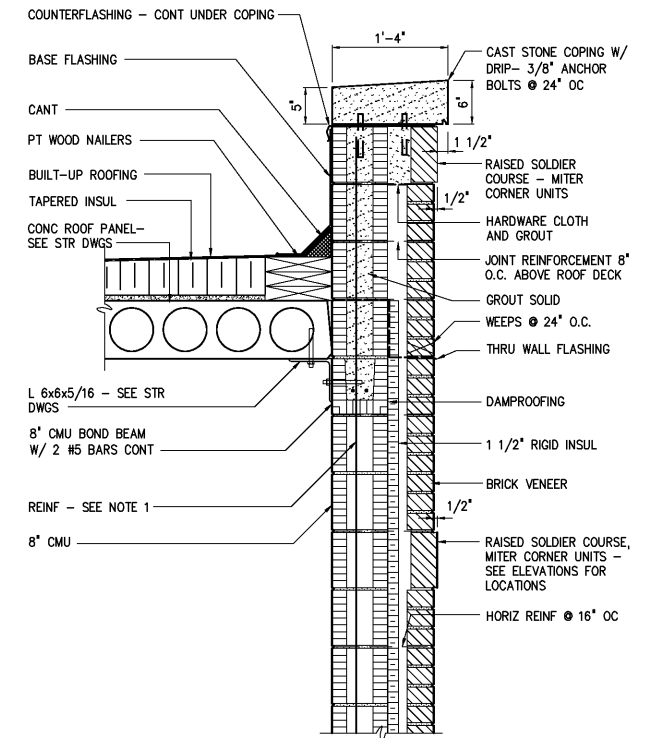


NOTES:

1 MASONRY REINF #5 @ 48" OC IN
FULLY GROUTED CELLS, AT ALL
CORNERS, AND ADJACENT TO ALL
OPENINGS, ALL WALLS.



				DESIGNED	WHR/DAW
				DRAWN	ALB/DAW
				CHECKED	
	RECORD DRAWINGS	MAR 2008	RLT	PROJ. ENGR.	DAN
	CONSTRUCTION	MAR 2004	RLT		
	REGULATORY APPROVAL	NOV 2003	RLT		
	PRELIMINARY DESIGN	NOV 2002	RLT		
NO.	ISSUED FOR	DATE	BY	APPROVED	

THIS DOCUMENT ORIGINALLY ISSUED
FOR CONSTRUCTION AND SEALED BY
ROBERT S. DiFIORE, SEAL NO. 22769

THIS DOCUMENT ORIGINALLY ISSUED
FOR CONSTRUCTION AND SEALED BY
RONALD L. TAYLOR, SEAL NO. 024649

RECORD DRAWING

THIS DRAWING HAS BEEN MODIFIED TO REFLECT FIELD CHANGES REPORTED BY THE CONTRACTOR OR ANOTHER PARTY, BUT NOT VERIFIED BY THE CERTIFYING ENGINEER. THIS DOCUMENT ORIGINALLY ISSUED AND SEALED BY WILLIAM H. RUSSELL, SEAL NUMBER 008532. THIS MEDIA SHALL NOT BE CONSIDERED A CERTIFIED DOCUMENT.

HAZEN AND SAWYER
Environmental Engineers & Scientists
4011 WestChase Blvd, Raleigh, North Carolina 27607

CITY OF ROANOKE
VIRGINIA

REGIONAL WATER POLLUTION CONTROL PLANT
WET WEATHER IMPROVEMENTS

PRIMARY CLARIFIERS NOS. 7-9
ARCHITECTURAL
WALL SECTIONS AND DETAILS

THE SCALE BAR SHOWN BELOW MEASURES ONE INCH LONG ON THE ORIGINAL DRAWING.	DATE JULY 2003	
	H & S JOB NUMBER	30788A
	CONTRACT NUMBER A	DRAWING NUMBER A263