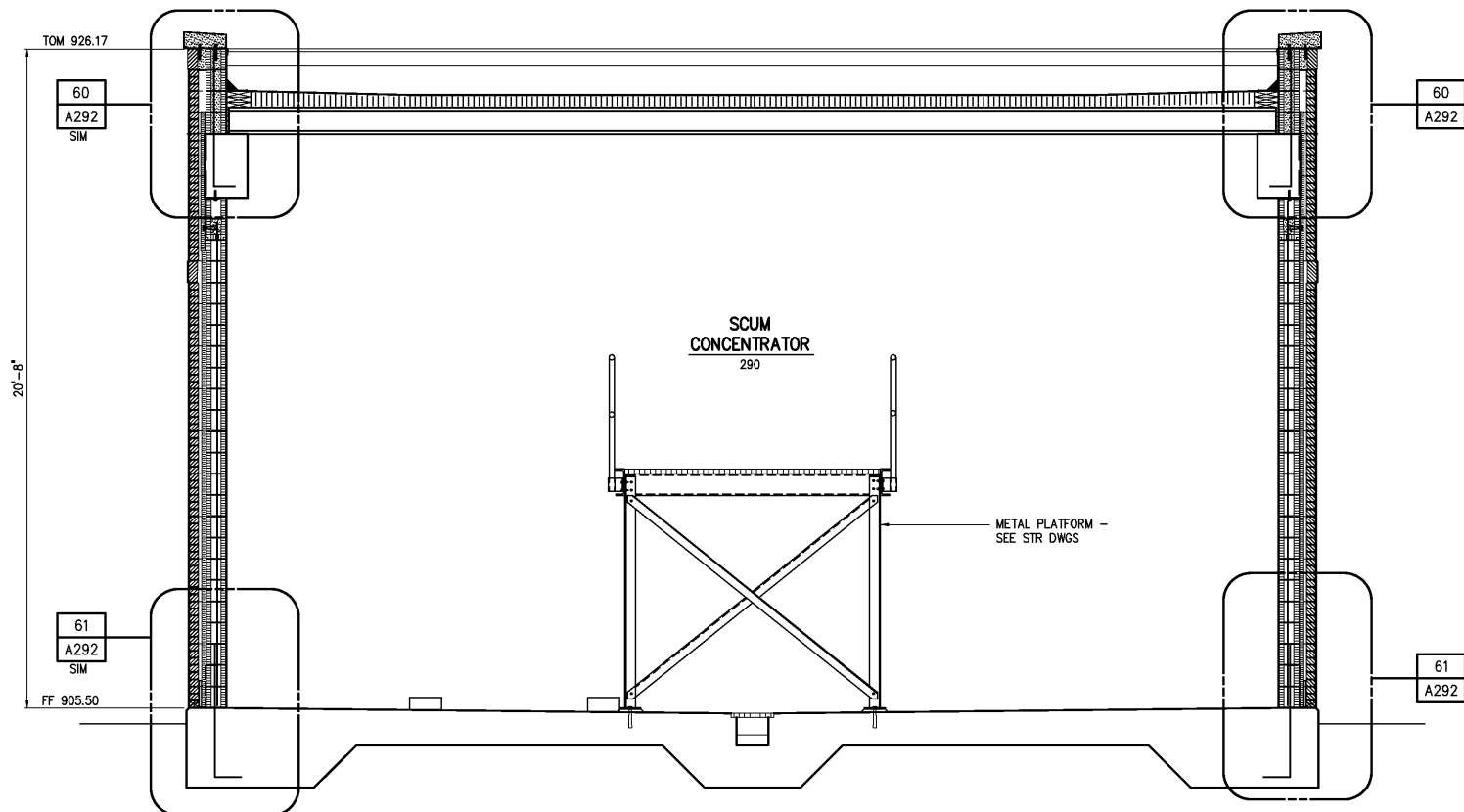


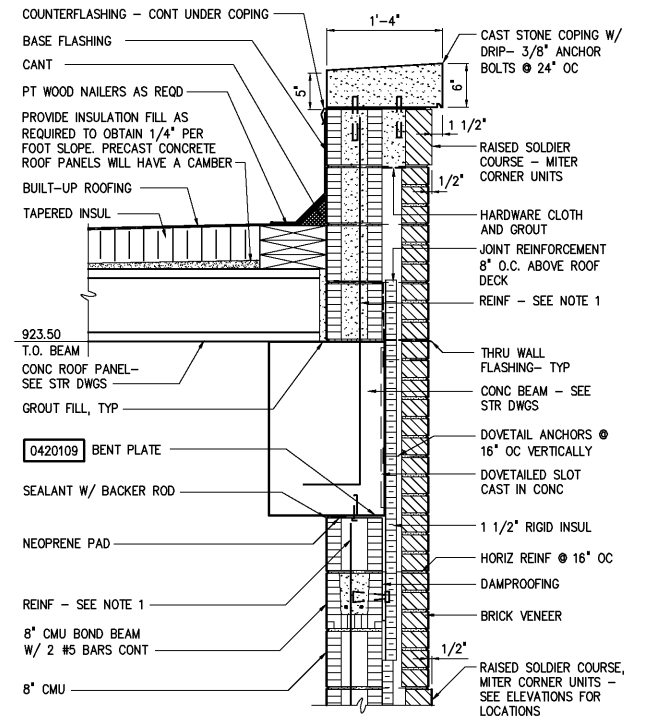
SECTION AA
3/8"=1'-0" A290



SECTION AB
3/8"=1'-0" A290

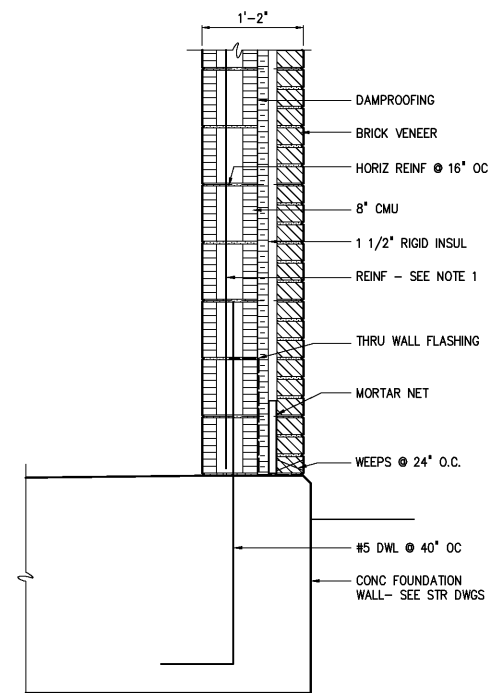
NOTES:

1 MASONRY REINF #5 @ 40" OC IN FULLY GROUTED CELLS, AT ALL CORNERS, AND ADJACENT TO ALL OPENINGS, ALL WALLS.



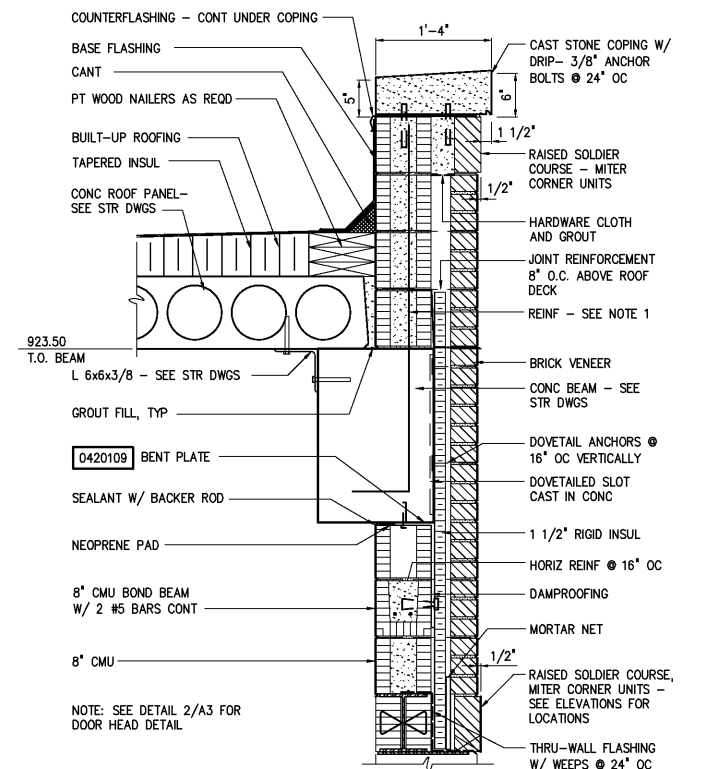
EXTERIOR MASONRY WALL
TYPICAL PARAPET

DETAIL 60
1"=1'-0" A292



EXTERIOR MASONRY WALL
TYPICAL BOTTOM CONNECTION

DETAIL 61
1"=1'-0" A292



EXTERIOR MASONRY WALL
TYPICAL PARAPET

DETAIL 62
1"=1'-0" A292

DESIGNED	WHR/DAW
DRAWN	ALB/DAW
CHECKED	
PROJ. ENGR.	DAN
APPROVED	
NO.	
ISSUED FOR	
DATE	
BY	
RECORD DRAWINGS	MAR 2008 RLT
CONSTRUCTION	MAR 2004 RLT
REGULATORY APPROVAL	NOV 2003 RLT
PRELIMINARY DESIGN	NOV 2002 RLT

THIS DOCUMENT ORIGINALLY ISSUED FOR CONSTRUCTION AND SEALED BY ROBERT S. DIFIORE, SEAL NO. 22769

THIS DOCUMENT ORIGINALLY ISSUED FOR CONSTRUCTION AND SEALED BY RONALD L. TAYLOR, SEAL NO. 024649

RECORD DRAWING

THIS DRAWING HAS BEEN MODIFIED TO REFLECT FIELD CHANGES REPORTED BY THE CONTRACTOR OR ANOTHER PARTY, BUT NOT VERIFIED BY THE CERTIFYING ENGINEER. THIS DOCUMENT ORIGINALLY ISSUED AND SEALED BY WILLIAM H. RUSSELL, SEAL NUMBER 008532. THIS MEDIA SHALL NOT BE CONSIDERED A CERTIFIED DOCUMENT.

HAZEN AND SAWYER
Environmental Engineers & Scientists
4011 WestChase Blvd, Raleigh, North Carolina 27607

CITY OF ROANOKE
VIRGINIA
REGIONAL WATER POLLUTION CONTROL PLANT
WET WEATHER IMPROVEMENTS

SCUM CONCENTRATOR BUILDING
ARCHITECTURAL
WALL SECTIONS AND DETAILS

THE SCALE BAR SHOWN BELOW MEASURES ONE INCH LONG ON THE ORIGINAL DRAWING.	DATE JULY 2003
H & S JOB NUMBER 30788A	
CONTRACT NUMBER A	DRAWING NUMBER A292