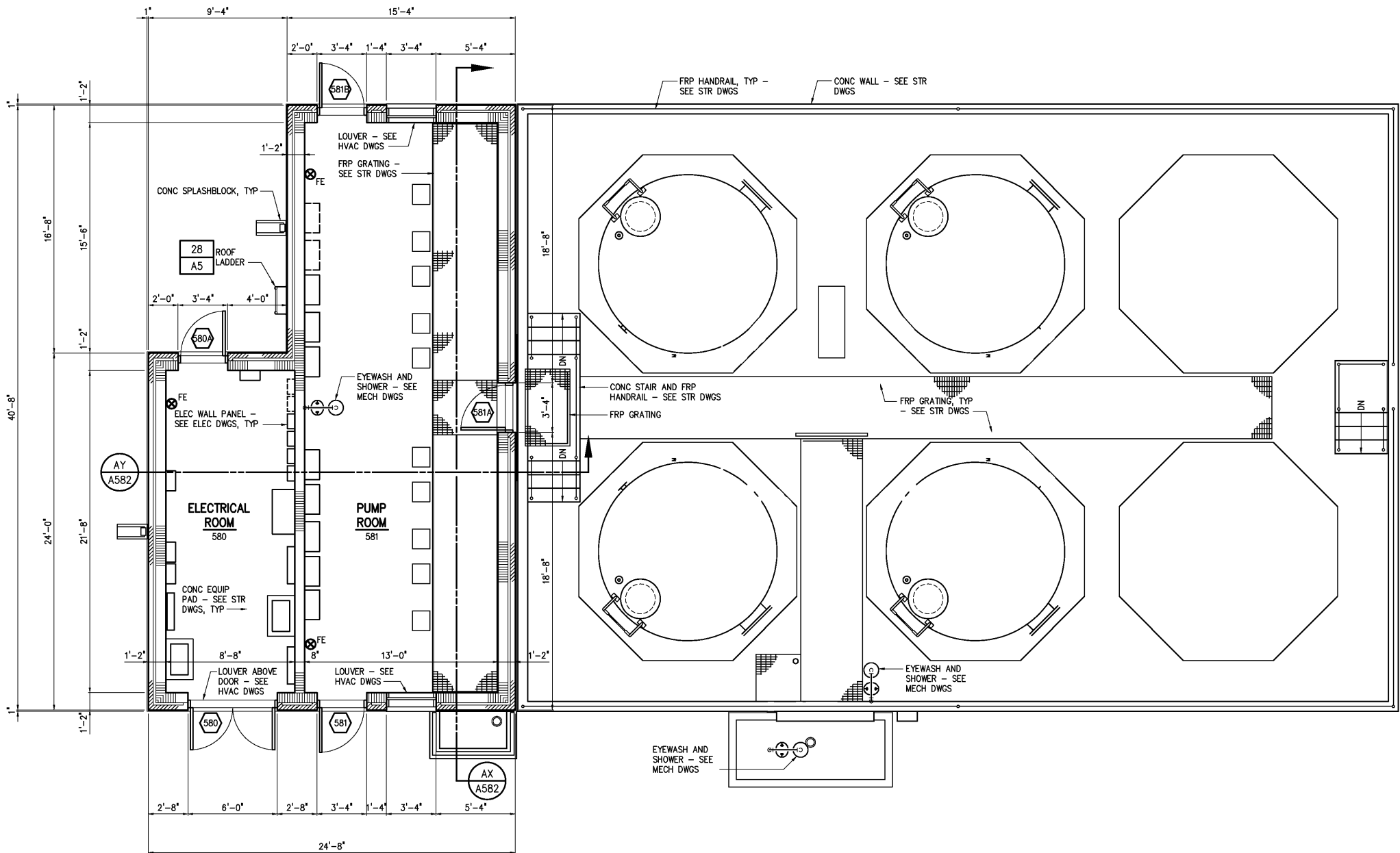
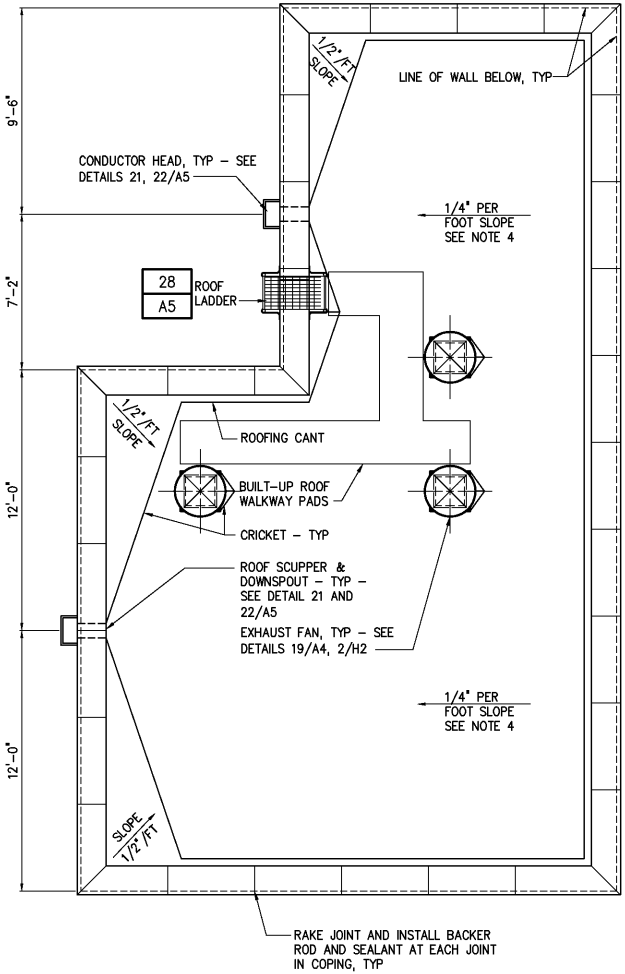


- NOTES:
- 1 VERTICAL MASONRY WALL REINFORCEMENT SHALL BE #5 @ 48" OC. IN FULLY GROUTED CELLS. PROVIDE #5 BAR AT ALL CORNERS AND ADJACENT TO ALL OPENINGS.
  - 2 INTERIOR MASONRY WALLS TO BE FULL HEIGHT. FILL UNGROUTED CELLS WITH CORE-FILL 500 OR EQUAL.
  - 3 DIMENSIONS GIVEN ARE TO NOMINAL FACE OF MASONRY.
  - 4 PROVIDE INSULATION FILL AS REQUIRED TO OBTAIN 1/4" PER FOOT SLOPE. PRECAST CONCRETE ROOF PANELS WILL HAVE A CAMBER.
  - 5 SEE DRAWING NO. A2 FOR DOOR SCHEDULE.
  - 6 SEE DRAWING NO. A1 FOR ROOM FINISH SCHEDULE.



**BOTTOM PLAN**  
1/4"=1'-0"



**ROOF PLAN**  
1/4"=1'-0"

|                     |          |
|---------------------|----------|
| DESIGNED            | WHR/DAW  |
| DRAWN               | ALB/DAW  |
| CHECKED             |          |
| PROJ. ENGR.         | DAN      |
| APPROVED            |          |
| NO.                 |          |
| RECORD DRAWINGS     | MAR 2008 |
| CONSTRUCTION        | MAR 2004 |
| REGULATORY APPROVAL | NOV 2003 |
| PRELIMINARY DESIGN  | NOV 2002 |
| ISSUED FOR          | DATE     |
|                     | BY       |

THIS DOCUMENT ORIGINALLY ISSUED FOR CONSTRUCTION AND SEALED BY ROBERT S. DIFIORE, SEAL NO. 22769

THIS DOCUMENT ORIGINALLY ISSUED FOR CONSTRUCTION AND SEALED BY RONALD L. TAYLOR, SEAL NO. 024649

**RECORD DRAWING**

THIS DRAWING HAS BEEN MODIFIED TO REFLECT FIELD CHANGES REPORTED BY THE CONTRACTOR OR ANOTHER PARTY, BUT NOT VERIFIED BY THE CERTIFYING ENGINEER. THIS DOCUMENT ORIGINALLY ISSUED AND SEALED BY WILLIAM H. RUSSELL, SEAL NUMBER 008532. THIS MEDIA SHALL NOT BE CONSIDERED A CERTIFIED DOCUMENT.

**Hazen and Sawyer**  
Environmental Engineers & Scientists  
4011 WestChase Blvd, Raleigh, North Carolina 27607

**CITY OF ROANOKE**  
VIRGINIA

**REGIONAL WATER POLLUTION CONTROL PLANT**  
**WET WEATHER IMPROVEMENTS**

**COAGULATION CHEMICAL FEED FACILITIES**  
**ARCHITECTURAL**  
**BOTTOM PLAN AND ROOF PLAN**

|   |                  |           |
|---|------------------|-----------|
| THE SCALE BAR SHOWN BELOW MEASURES ONE INCH LONG ON THE ORIGINAL DRAWING. | DATE             | JULY 2003 |
|   | H & S JOB NUMBER | 30788A    |
|   | CONTRACT NUMBER  | A         |
|   | DRAWING NUMBER   | A580      |