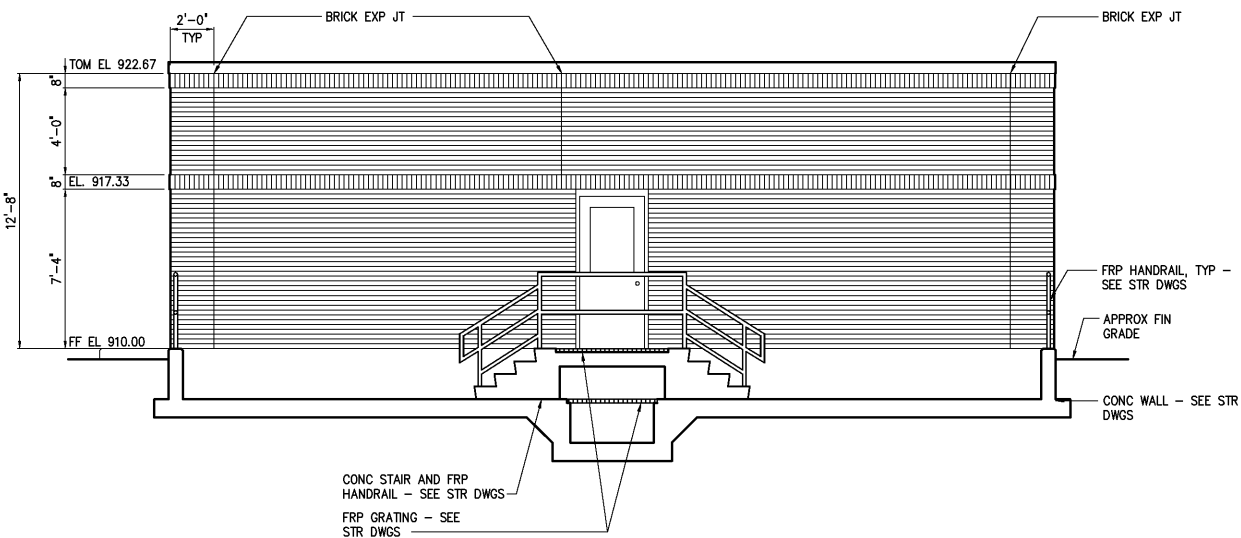
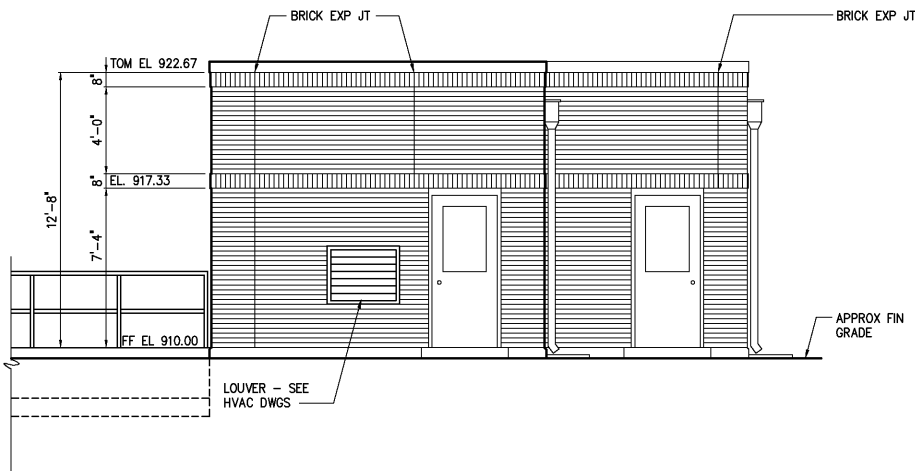


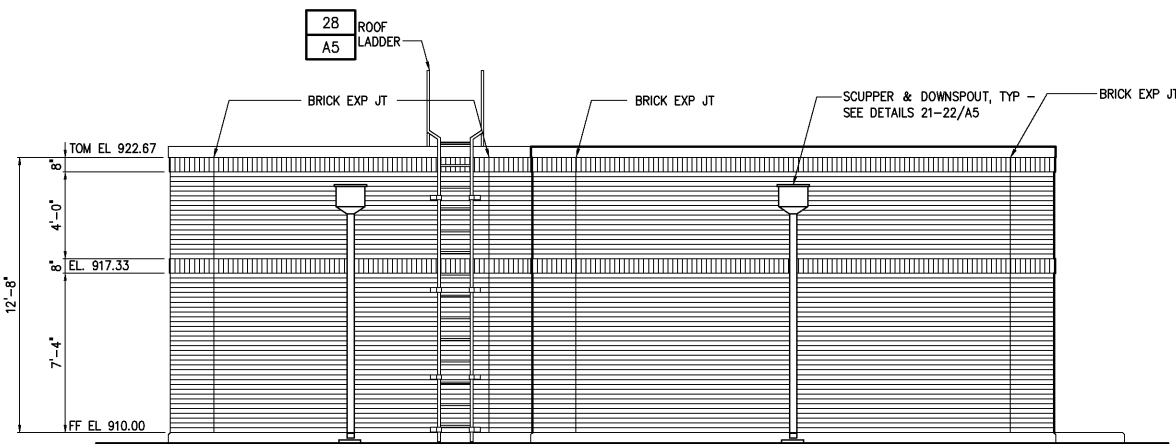
**SOUTH ELEVATION**  
1/4"=1'-0"



**EAST ELEVATION**  
1/4"=1'-0"



**NORTH ELEVATION**  
1/4"=1'-0"



**WEST ELEVATION**  
1/4"=1'-0"

				DESIGNED	WHR/DAW
				DRAWN	ALB/DAW
				CHECKED	
	RECORD DRAWINGS	MAR 2008	RLT	PROJ. ENGR.	DAN
	CONSTRUCTION	MAR 2004	RLT		
	REGULATORY APPROVAL	NOV 2003	RLT		
	PRELIMINARY DESIGN	NOV 2002	RLT		
NO.	ISSUED FOR	DATE	BY	APPROVED	

THIS DOCUMENT ORIGINALLY ISSUED FOR CONSTRUCTION AND SEALED BY ROBERT S. DIFIORE, SEAL NO. 22769

THIS DOCUMENT ORIGINALLY ISSUED FOR CONSTRUCTION AND SEALED BY RONALD L. TAYLOR, SEAL NO. 024649

**RECORD DRAWING**

THIS DRAWING HAS BEEN MODIFIED TO REFLECT FIELD CHANGES REPORTED BY THE CONTRACTOR OR ANOTHER PARTY, BUT NOT VERIFIED BY THE CERTIFYING ENGINEER. THIS DOCUMENT ORIGINALLY ISSUED AND SEALED BY WILLIAM H. RUSSELL, SEAL NUMBER 008532. THIS MEDIA SHALL NOT BE CONSIDERED A CERTIFIED DOCUMENT.

**HAZEN AND SAWYER**  
Environmental Engineers & Scientists  
4011 WestChase Blvd, Raleigh, North Carolina 27607

**CITY OF ROANOKE**  
VIRGINIA

**REGIONAL WATER POLLUTION CONTROL PLANT**  
**WET WEATHER IMPROVEMENTS**

**COAGULATION CHEMICAL FEED FACILITIES**  
**ARCHITECTURAL**  
**ELEVATIONS**

THE SCALE BAR SHOWN BELOW MEASURES ONE INCH LONG ON THE ORIGINAL DRAWING.

DATE	JULY 2003
H & S JOB NUMBER	30788A
CONTRACT NUMBER	A
DRAWING NUMBER	A581