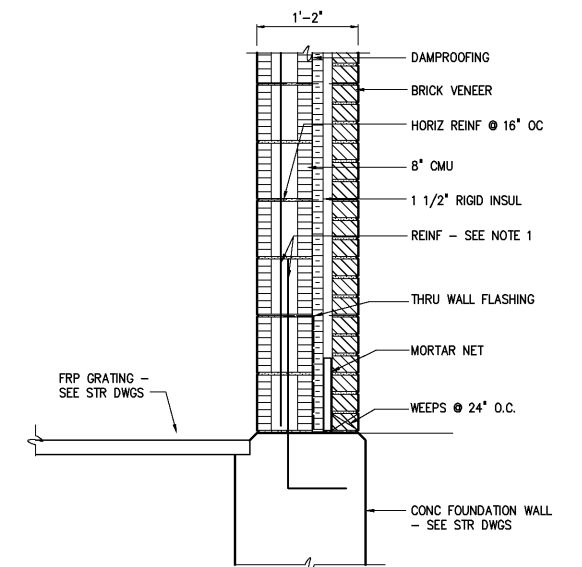
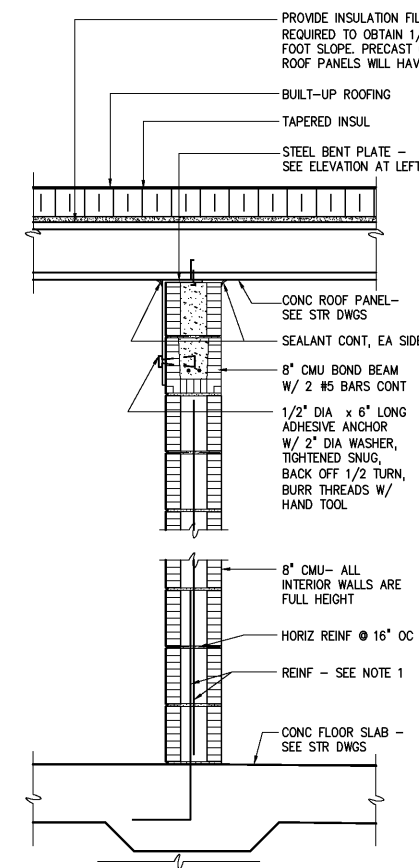
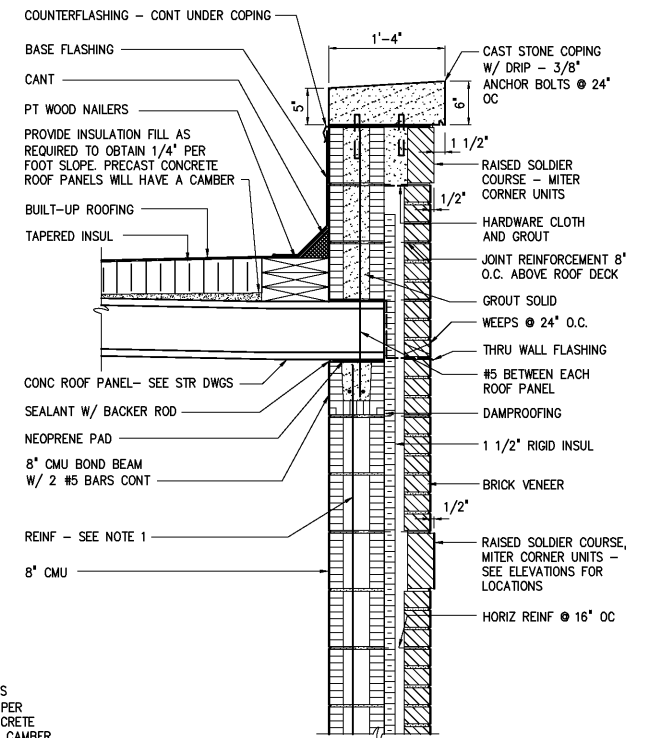


#### NOTES:

1 MASONRY REINF #5 @ 48" OC IN FULLY GROUTED CELLS, AT ALL CORNERS, AND ADJACENT TO ALL OPENINGS, ALL WALLS.



DESIGNED	WHR/DAW
DRAWN	ALB/DAW
CHECKED	
PROJ. ENGR.	DAN
APPROVED	
NO.	
ISSUED FOR	DATE
BY	
RECORD DRAWINGS	MAR 2008
CONSTRUCTION	MAR 2004
REGULATORY APPROVAL	NOV 2003
PRELIMINARY DESIGN	NOV 2002
ISSUED FOR	DATE
BY	

THIS DOCUMENT ORIGINALLY ISSUED FOR CONSTRUCTION AND SEALED BY ROBERT S. DIFIORE, SEAL NO. 22769

THIS DOCUMENT ORIGINALLY ISSUED FOR CONSTRUCTION AND SEALED BY RONALD L. TAYLOR, SEAL NO. 024649

#### RECORD DRAWING

THIS DRAWING HAS BEEN MODIFIED TO REFLECT FIELD CHANGES REPORTED BY THE CONTRACTOR OR ANOTHER PARTY, BUT NOT VERIFIED BY THE CERTIFYING ENGINEER. THIS DOCUMENT ORIGINALLY ISSUED AND SEALED BY WILLIAM H. RUSSELL, SEAL NUMBER 008532. THIS MEDIA SHALL NOT BE CONSIDERED A CERTIFIED DOCUMENT.

**Hazen and Sawyer**  
Environmental Engineers & Scientists  
4011 WestChase Blvd, Raleigh, North Carolina 27607

**CITY OF ROANOKE**  
VIRGINIA  
**REGIONAL WATER POLLUTION CONTROL PLANT**  
WET WEATHER IMPROVEMENTS

**COAGULATION CHEMICAL FEED FACILITIES**  
**ARCHITECTURAL**  
**WALL SECTIONS AND DETAILS**

THE SCALE BAR SHOWN BELOW MEASURES ONE INCH LONG ON THE ORIGINAL DRAWING.	DATE	JULY 2003
	H & S JOB NUMBER	30788A
	CONTRACT NUMBER	A
	DRAWING NUMBER	A582