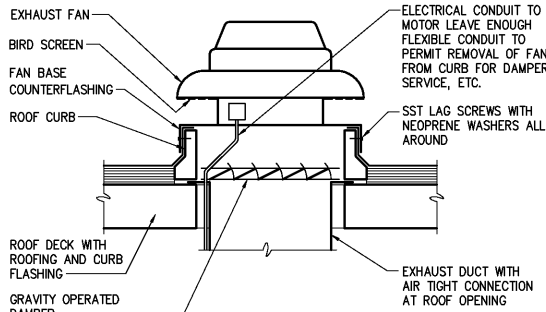


REFRIGERANT LINES ROOF PENETRATION CURB DETAIL

DETAIL 1
NTS H2



NOTE: COORDINATE FINAL DIMENSIONS WITH ROOF INSTALLER.

ROOF MOUNTED EXHAUST FAN AND CURB DETAIL

DETAIL 2
NTS H2

LOUVER SCHEDULE

MARK	LOCATION	MAX PRESS DROP	WIDTH	HEIGHT	CFM	FREE AREA (SQ FT)	MATERIAL	MFR/MODEL	REMARKS
PRELIMINARY TREATMENT FACILITIES									
L-120	GRIT CLASSIFIER	0.1	4'-10"	2'-0"	1,250	3.50'	AL	RUSKIN/ELC6375D	1,3
L-121	GRIT CLASSIFIER	0.1	4'-10"	2'-0"	1,250	3.50'	AL	RUSKIN/ELC6375D	1,3
L-122	GRIT CLASSIFIER	0.1	4'-10"	2'-0"	1,250	3.50'	AL	RUSKIN/ELC6375D	1,3
L-123	GRIT CLASSIFIER	0.1	4'-10"	2'-0"	1,250	3.50'	AL	RUSKIN/ELC6375D	1,3
L-124	MECHANICAL SCREEN	0.1	4'-0"	5'-4"	4,500	8.98'	AL	RUSKIN/ELC6375D	1,3
L-125	MECHANICAL SCREEN	0.1	4'-0"	5'-4"	4,500	8.98'	AL	RUSKIN/ELC6375D	1,3
L-126	MECHANICAL SCREEN	0.1	4'-0"	5'-4"	4,500	8.98'	AL	RUSKIN/ELC6375D	1,3
L-127	MECHANICAL SCREEN	0.1	4'-0"	5'-4"	4,500	8.98'	AL	RUSKIN/ELC6375D	1,3
L-128	DUMPSTER AREA	0.1	4'-0"	4'-0"	4,500	6.81'	AL	RUSKIN/ELC6375D	1,3
COAGULATION CHEMICAL FEED FACILITIES									
L-580	ELECTRICAL ROOM	0.1	5'-8"	2'-0"	1,300	3.92'	AL	RUSKIN/ELC6375D	1,2
L-581	FEED PUMPS	0.1	3'-4"	2'-8"	1,200	2.30'	AL	RUSKIN/ELC6375D	1,2
L-582	FEED PUMPS	0.1	3'-4"	2'-8"	1,200	2.30'	AL	RUSKIN/ELC6375D	1,2
SCUM CONCENTRATOR BUILDING									
L-290	SCUM CONCENT. BLDG	0.1	4'-0"	3'-4"	1,500	5.41'	AL	RUSKIN/ELC6375D	1,2
L-291	SCUM CONCENT. BLDG	0.1	4'-0"	3'-4"	1,500	5.41'	AL	RUSKIN/ELC6375D	1,2
L-292	SCUM CONCENT. BLDG	0.1	4'-0"	3'-4"	1,500	5.41'	AL	RUSKIN/ELC6375D	1,2
L-293	SCUM CONCENT. BLDG	0.1	4'-0"	3'-4"	1,500	5.41'	AL	RUSKIN/ELC6375D	1,2
REMARKS: 1 ALUMINUM BIRDSCREEN. 2 PROVIDE NEMA 4X ACTUATOR. 3 PROVIDE EXPLOSION PROOF ACTUATOR. LOUVERS AS MANUF. BY RUSKIN, CS, AMERICAN WARMING, OR EQUAL									

VERTICAL SELF – CONTAINED AIR CONDITIONER SCHEDULE

MARK	LOCATION	TOTAL COOLING CAPACITY	CFM	FAN HP	VOLTAGE	PHASE	MANUFACTURER	MODEL	REMARKS
PRELIMINARY TREATMENT FACILITIES									
AC-120	ELECTRICAL ROOM	65600	2800	1 1/2	460	3	LIEBERT	BU-067A	1,2,3,4,5,6,8
PRIMARY CLARIFIER NOS 7-9									
AC-260	ELECTRICAL ROOM	35500	1800	3/4	460	3	LIEBERT	BU-42A	1,2,3,4,5,7,8
DISINFECTION CHEMICAL FEED FACILITIES									
AC-660	ELECTRICAL ROOM	29,000	1,800	3/4	460	3	LIEBERT	BU-042A	1,2,3,4,5,7,8
REMARKS: 1. PROVIDE 12' FLOOR STAND. 2. PROVIDE DISCHARGE PLENUM WITH SUPPLY GRILLES AND RETURN GRILLE. 3. HOT GAS BYPASS. 4. PROVIDE NON LOCKING DISCONNECT SWITCH. 5. PROVIDE SMOKE DETECTOR. 6. SCR 15 KW REHEAT. 7. SCR 9 KW REHEAT. 8. CONDENSATE PUMP.									

AIR COOLED CONDENSING UNIT SCHEDULE

MARK	LOCATION	TOTAL CAPACITY BTUH	FAN DATA			ELECTRICAL DATA VOLTS/HZ/PHASE	MANUFACTURER	MODEL	REMARKS
			NO	TYPE	HP				
PRELIMINARY TREATMENT FACILITIES									
CU-120	ROOF	65600	1	PROPELLER	3/4	460/60/3	LIEBERT	CSF-083L	1,2,3,4
PRIMARY CLARIFIER NOS 7-9									
CU-260	ROOF	35500	1	PROPELLER	3/4	460/60/3	LIEBERT	CSF-083L	1,2,3,4
DISINFECTION CHEMICAL FEED FACILITIES									
CU-660	ROOF	30,000	1	PROPELLER	3/4	460/60/3	LIEBERT	CSF-083L	1,2,3,4
REMARKS:									
1. INSULATE REFRIGERANT PIPING.					3. PROVIDE LOW AMBIENT TO ZERO F° OPERATION.				
2. PROVIDE CORROSION RESISTANT TREATMENT, 6 MIL HERESITE P-413 COATING FOR COIL.					4. NEMA 4X DISCONNECT SWITCH.				

NO.	ISSUED FOR	DATE	BY	APPROVED	DESIGNED H & S DRAWN H & S CHECKED PROJ. ENGR. DAN	THIS DOCUMENT ORIGINALLY ISSUED FOR CONSTRUCTION AND SEALED BY ROBERT S. DIFIORE, SEAL NO. 22769 THIS DOCUMENT ORIGINALLY ISSUED FOR CONSTRUCTION AND SEALED BY RONALD L. TAYLOR, SEAL NO. 024649	RECORD DRAWINGS MAR 2008 RLT CONSTRUCTION MAR 2004 RLT REGULATORY APPROVAL NOV 2003 RLT PRELIMINARY DESIGN NOV 2002 RLT	CITY OF ROANOKE VIRGINIA REGIONAL WATER POLLUTION CONTROL PLANT WET WEATHER IMPROVEMENTS	HVC SCHEDULES & DETAILS	THE SCALE BAR SHOWN BELOW MEASURES ONE INCH LONG ON THE ORIGINAL DRAWING.	DATE JULY 2003 H & S JOB NUMBER 30788A CONTRACT NUMBER A DRAWING NUMBER H2