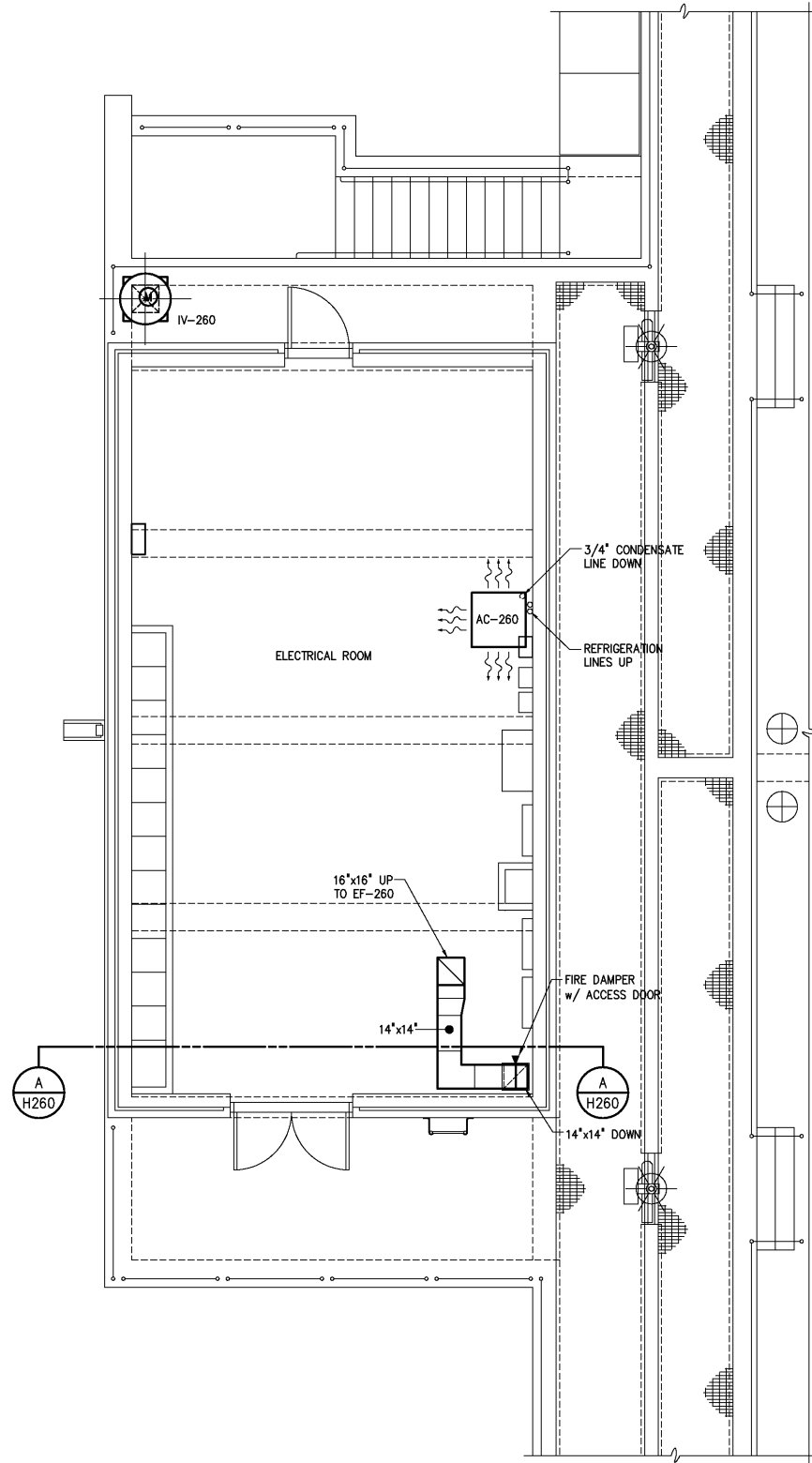
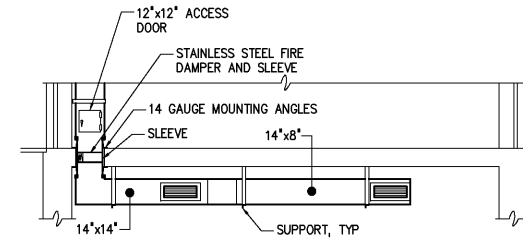


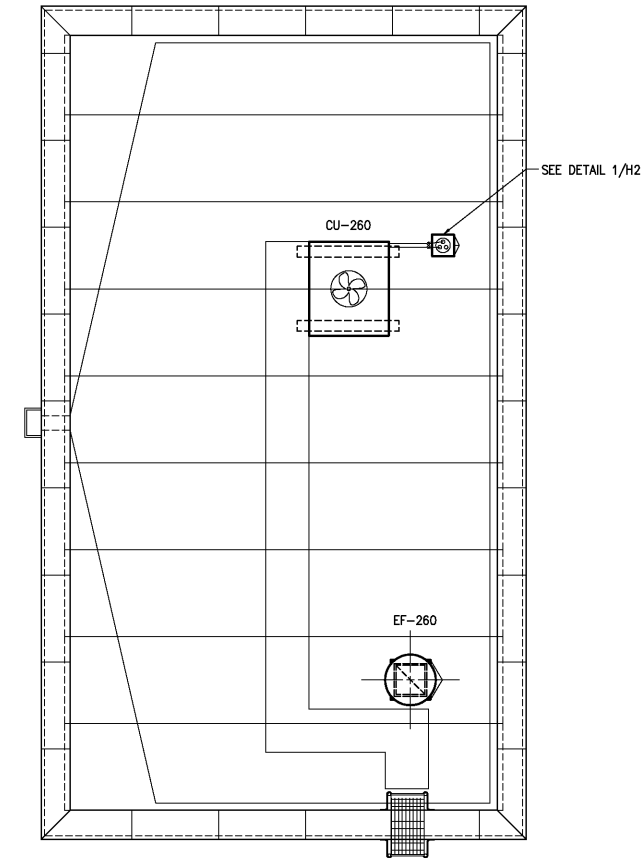
BOTTOM PLAN
1/4"=1'-0"



TOP PLAN
1/4"=1'-0"



SECTION A
1/4"=1'-0" H260



ROOF PLAN
1/4"=1'-0"

NOTES:

- 1 EXHAUST GRILLES SHALL BE METAL-AIRE MODEL RHD WITH OPPOSED BLADE DAMPERS.
- 2 ALL EXHAUST DUCT ELBOWS SHALL HAVE TURNING VANES.
- 3 DUCTS SHALL BE SECURELY HUNG AND SUPPORTED FROM STRUCTURE WITH STAINLESS STEEL TRAPEZE HANGERS AND STAINLESS STEEL ANCHORS.
- 4 DUCT AND DUCT HARDWARE SHALL BE ALUMINUM CONSTRUCTION.
- 5 BOTTOM OF UNIT HEATER SHALL BE 8'-0" AFF.
- 6 INSULATE EXHAUST DUCT INSIDE ELECTRICAL ROOM WITH TWO INCHES FIBERGLASS WRAP WITH VAPOR BARRIER. PROVIDE 0.016-INCH THICK ALUMINUM JACKET WITH STAINLESS STEEL BANDS.

				DESIGNED	H & S
				DRAWN	H & S
				CHECKED	
	RECORD DRAWINGS	MAR 2008	RLT	PROJ. ENGR.	DAN
	CONSTRUCTION	MAR 2004	RLT		
	REGULATORY APPROVAL	NOV 2003	RLT		
	PRELIMINARY DESIGN	NOV 2002	RLT		
NO.	ISSUED FOR	DATE	BY	APPROVED	

THIS DOCUMENT ORIGINALLY ISSUED FOR CONSTRUCTION AND SEALED BY ROBERT S. DIFIORE, SEAL NO. 22769

RECORD DRAWING

THIS DRAWING HAS BEEN MODIFIED TO REFLECT FIELD CHANGES REPORTED BY THE CONTRACTOR OR ANOTHER PARTY, BUT NOT VERIFIED BY THE CERTIFYING ENGINEER. THIS DOCUMENT ORIGINALLY ISSUED AND SEALED BY DAVID A. NAILOR, 025465. THIS MEDIA SHALL NOT BE CONSIDERED A CERTIFIED DOCUMENT.

THIS DOCUMENT ORIGINALLY ISSUED FOR CONSTRUCTION AND SEALED BY RONALD L. TAYLOR, SEAL NO. 024649

HAZEN AND SAWYER
Environmental Engineers & Scientists
4011 WestChase Blvd, Raleigh, North Carolina 27607

CITY OF ROANOKE
VIRGINIA

REGIONAL WATER POLLUTION CONTROL PLANT
WET WEATHER IMPROVEMENTS

PRIMARY CLARIFIER NOS 7-9
HVAC
BOTTOM, TOP & ROOF PLANS

THE SCALE BAR SHOWN BELOW MEASURES ONE INCH LONG ON THE ORIGINAL DRAWING.	DATE	JULY 2003
	H & S JOB NUMBER	30788A
	CONTRACT NUMBER	A
	DRAWING NUMBER	H260