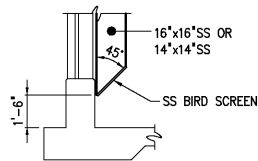
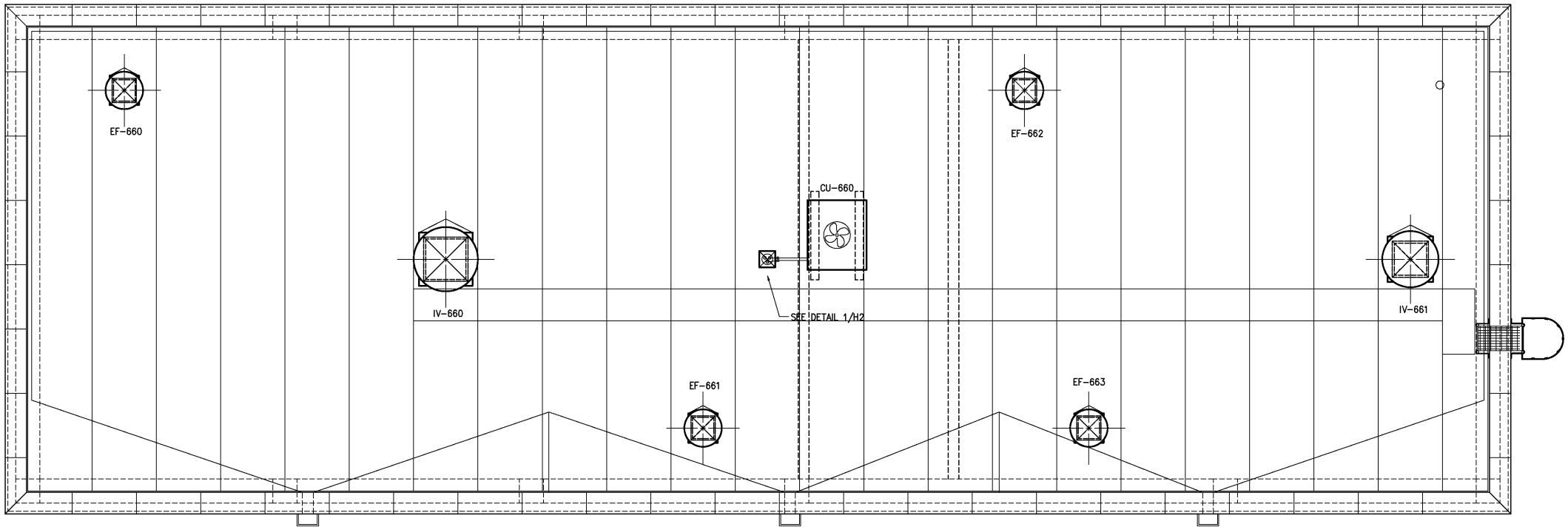


**BOTTOM PLAN**  
1/4"=1'-0"



**SECTION A**  
1/4"=1'-0"



**ROOF PLAN**  
1/4"=1'-0"

- NOTES:**
- 1 EXHAUST DUCT ELBOWS SHALL HAVE SS TURNING VANES.
  - 2 DUCTS SHALL BE SECURELY HUNG AND SUPPORTED FROM STRUCTURE WITH STAINLESS STEEL TRAPEZE HANGERS AND STAINLESS STEEL ANCHORS.
  - 3 DUCT SHALL BE OF 316 STAINLESS STEEL CONSTRUCTION.
  - 4 BOTTOM OF UNIT HEATER SHALL BE 8'-0" AFF.
  - 5 ALL METAL FASTENERS, BRACKETS, MOUNTING HARDWARE AND ACCESSORIES IN SODIUM HYPOCHLORITE AREA SHALL BE CONSTRUCTED OF HASTELLOY C. ALL METAL FASTENERS, BRACKETS, MOUNTING HARDWARE AND ACCESSORIES IN SODIUM BISULFITE AREA SHALL BE CONSTRUCTED OF 316 SST. A PVC COATED UNISTRUT WALL MOUNTING SYSTEM SHALL BE USED.
  - 6 CONTROL PANEL SHALL BE PROVIDED AND INSTALLED BY ELECTRICAL CONTRACTOR.

				DESIGNED H & S		RECORD DRAWING		CITY OF ROANOKE VIRGINIA		DISINFECTION CHEMICAL FEED FACILITIES		THE SCALE BAR SHOWN BELOW MEASURES ONE INCH LONG ON THE ORIGINAL DRAWING.		DATE JULY 2003	
				DRAWN H & S										H & S JOB NUMBER 30788A	
				CHECKED										CONTRACT NUMBER	
RECORD DRAWINGS				MAR 2008		RLT		HAZEN AND SAWYER Environmental Engineers & Scientists 4011 WestChase Blvd, Raleigh, North Carolina 27607		REGIONAL WATER POLLUTION CONTROL PLANT WET WEATHER IMPROVEMENTS		HVAC  BOTTOM PLAN & ROOF PLAN		DRAWING NUMBER	
CONSTRUCTION				MAR 2004		RLT								A	
REGULATORY APPROVAL				NOV 2003		RLT								H660	
PRELIMINARY DESIGN				NOV 2002		RLT		THIS DOCUMENT ORIGINALLY ISSUED FOR CONSTRUCTION AND SEALED BY RONALD L. TAYLOR, SEAL NO. 024649		THIS DRAWING HAS BEEN MODIFIED TO REFLECT FIELD CHANGES REPORTED BY THE CONTRACTOR OR ANOTHER PARTY, BUT NOT VERIFIED BY THE CERTIFYING ENGINEER. THIS DOCUMENT ORIGINALLY ISSUED AND SEALED BY DAVID A. NAILOR, 025465. THIS MEDIA SHALL NOT BE CONSIDERED A CERTIFIED DOCUMENT.					
ISSUED FOR				DATE		BY									
NO.															